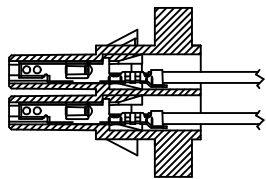
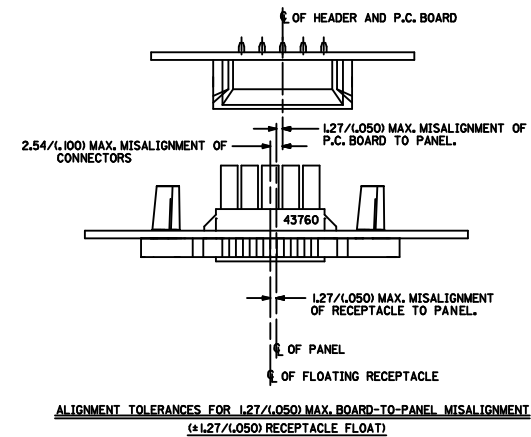
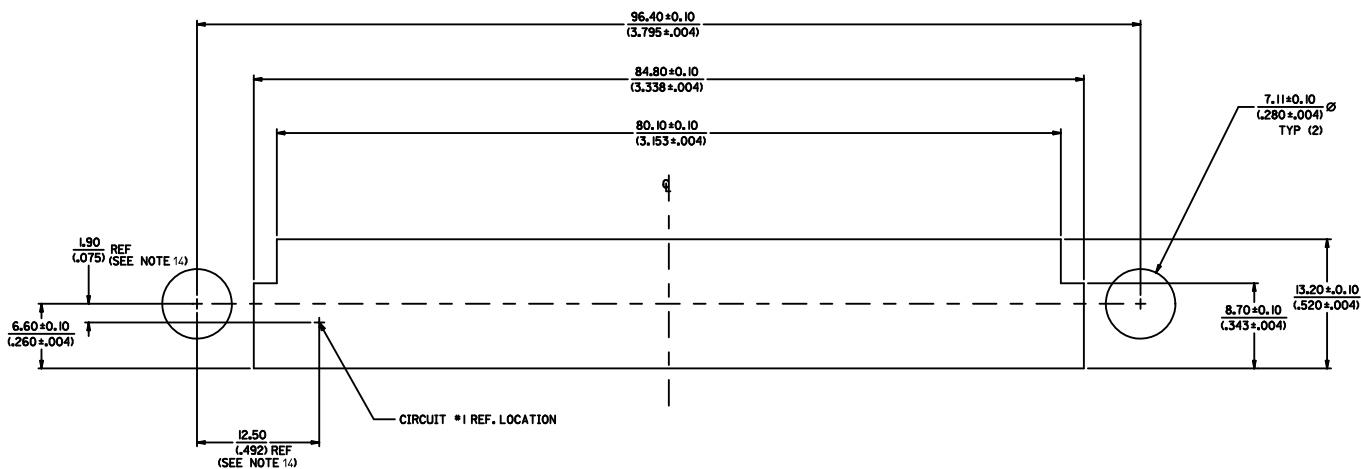
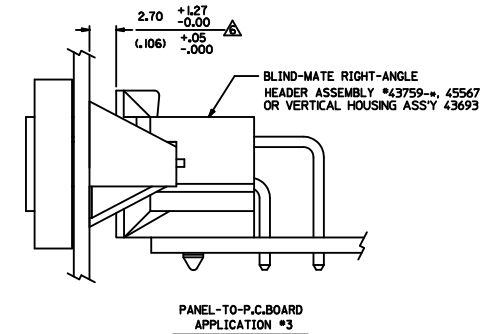
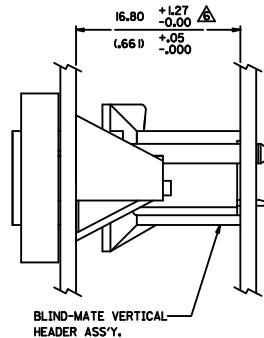
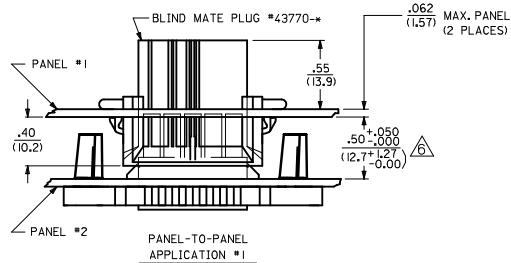


- NOTES:**
1. MATERIAL:  
NYLON, 94V-2, COLOR: NATURAL (WHITE).
  2. FINISH: NONE
  3. PRODUCT SPECIFICATION: PS-43759-0001
  4. PACKAGING SPECIFICATION: PK-40873-0134
  5. PART MATES WITH MINI-FIT B.M.I. HEADER #43759, 45567 OR 43693, AND B.M.I. PLUG # 43770.
  6. A MAXIMUM TOLERANCE OF .050/(1.27) ALLOWS FOR 2 POINTS OF ELECTRICAL CONTACT. A MAXIMUM TOLERANCE OF .020/(.51) ALLOWS FOR 4 POINTS OF CONTACT.
  7. THIS CONNECTOR ALLOWS FOR .050/(1.27) MAX. MISALIGNMENT IN ANY DIRECTION.
  8. CONNECTOR ASSEMBLIES ARE NOT TO BE MATED OR UNMATED WHILE CIRCUITS ARE LIVE.
  9. THIS PART IS INTENDED FOR ONE PANEL INSERTION ONLY. REMOVAL AND RE-INSERTION CAN DAMAGE THE MOUNTING SPIRALS.
  10. PANEL SHOULD BE PUNCHED IN THE DIRECTION OF CONNECTOR INSERTION.
  11. BOTH SPIRALS SHOULD BE INSERTED INTO THE PANEL AT THE SAME TIME. ROCKING THE PART INTO PLACE MAY CAUSE SPIRAL DAMAGE.
  12. IF THIS PRODUCT IS STORED IN AN ENVIRONMENT WITH A RELATIVE HUMIDITY OF LESS THAN 50%, MOISTURE MUST BE ADDED. REFER TO TECHNICAL ADVISORY AS-45499-002 FOR INSTRUCTIONS.
  13. PART IS FOR USE WITH 5556 OR 44476 SERIES TERMINALS.
  14. THIS DIMENSION TO BE USED FOR ALIGNMENT OF THE MATING CONNECTOR.
  15. PART MAY OR MAY NOT HAVE OPTIONAL RIBS.
  16. THIS PART IS NOT INTENDED TO PROVIDE ANY ALIGNMENT OF CUSTOMER COMPONENTS OR MODULES, SUCH AS POWER SUPPLIES AND CHASSIS.
  17. WIRES ARE TO BE DRESSED IN SUCH A MANNER TO ALLOW THE TERMINALS TO FLOAT FREELY IN THE POCKET.
  18. THIS PART CONFORMS TO CLASS B REQUIREMENTS OF COSMETIC SPECIFICATION PS-45499-002.

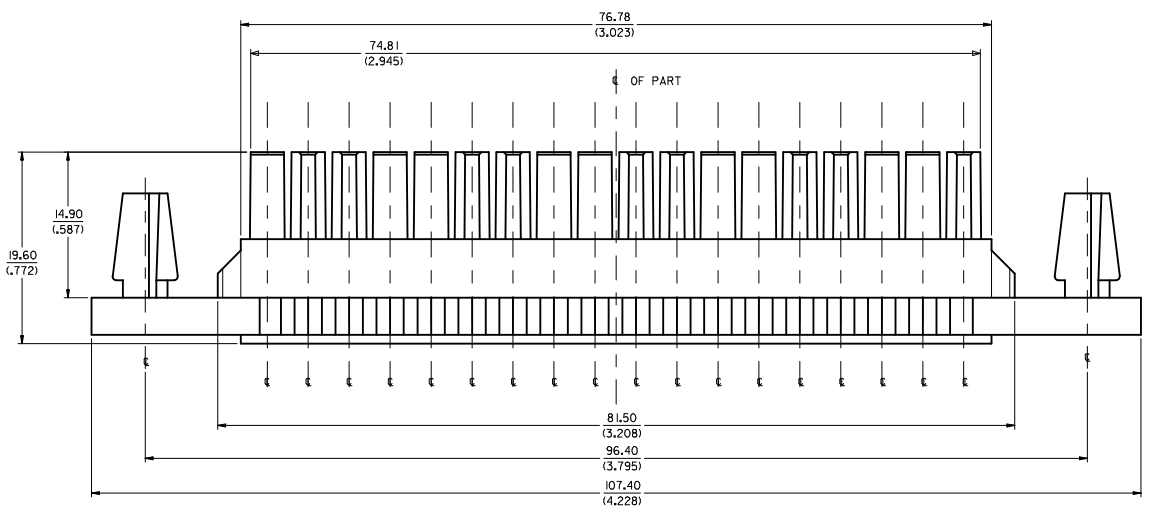
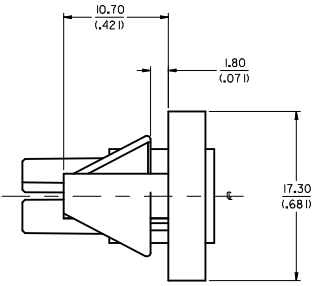
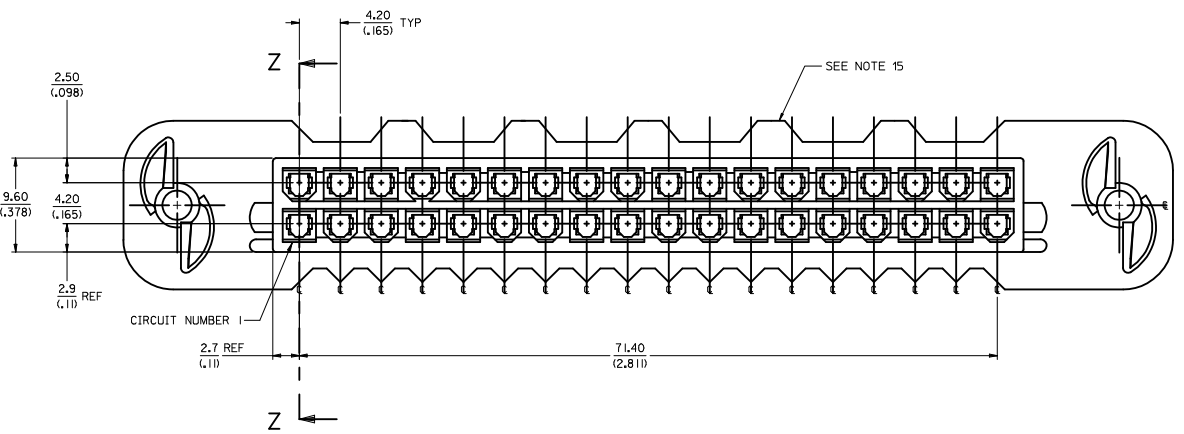
<b>UPDATE HSG NOTE</b> EC NO: UCP2012-2787 DRAWN BY: DORNINGWEN CHKD: BELL APPROVED: FSMITH DATE: 2012/07/24 DATE: 2012/07/24 DATE: 2012/05/04	QUALITY SYMBOLS	GENERAL TOLERANCES (UNLESS SPECIFIED)	DIMENSION STYLE	SCALE	DESIGN UNITS	THIRD ANGLE PROJECTION
	∇=0 ∇=0 ∇=0	mm: 4 PLACES ±.015 3 PLACES ±.015 2 PLACES ±0.38 1 PLACE ±.015 ANGULAR ±1/2°	MM/IN	4:1	METRIC	THIRD ANGLE PROJECTION
	DRAWN BY: MAN LAPAZ CHECKED BY: MBANDURA APPROVED BY: FSMITH DATE: 06/18/17 DATE: 06/18/17 DATE: 2012/05/04	TITLE: PANEL-MOUNT RECEPTACLE 36-CIRCUIT BLIND MATE MINI-FIT SERIES	MATERIAL NO. 43760-0001	DOCUMENT NO. SD-43760-001	SHEET NO. 1 OF 2	MOLEX INCORPORATED
	DRAFT WHERE APPLICABLE MUST REMAIN WITHIN DIMENSIONS	THIS DRAWING CONTAINS INFORMATION THAT IS PROPRIETARY TO MOLEX INCORPORATED AND SHOULD NOT BE USED WITHOUT WRITTEN PERMISSION				



**SECTION "Z-Z"**  
TERMINAL ORIENTATION

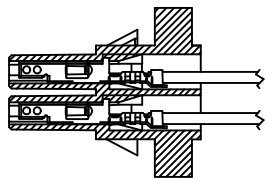


SEE SHEET 1 IEC NO. UCP2012-2787 DRAWN BY: DRWNINGUEN CHYD:BELL APPR:FSMTH 2012/02/24 2012/02/24 2012/05/04	QUALITY SYMBOLS	GENERAL TOLERANCES (UNLESS SPECIFIED)	DIMENSION STYLE	SCALE	DESIGN UNITS	THIRD ANGLE PROJECTION
	▽=0	4 PLACES ± mm ± INCH	MM/IN	4:1	METRIC	☉
	▽=0	3 PLACES ± 0.15 ± 0.015				
	▽=0	2 PLACES ± 0.38 ± 0.038				
		1 PLACE ± 0.76 ± 0.076				
		ANGULAR ±1/2°				
		DRAFT WHERE APPLICABLE MUST REMAIN WITHIN DIMENSIONS				
			MATERIAL NO.	DOCUMENT NO.		
			43760-0001	SD-43760-001		
			THIS DRAWING CONTAINS INFORMATION THAT IS PROPRIETARY TO MOLEX INCORPORATED AND SHOULD NOT BE USED WITHOUT WRITTEN PERMISSION			

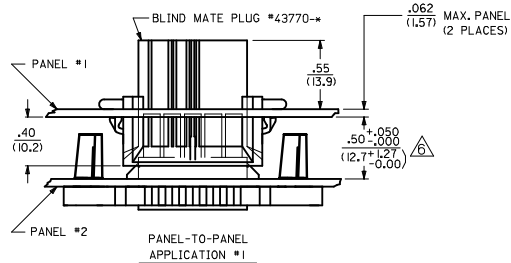


- NOTES:**
1. MATERIAL:  
NYLON, 94V-2, COLOR: NATURAL (WHITE).
  2. FINISH: NONE
  3. PRODUCT SPECIFICATION: PS-43759-0001
  4. PACKAGING SPECIFICATION: PK-40873-0134
  5. PART MATES WITH MINI-FIT B.M.I. HEADER #43759, 45567 OR 43693, AND B.M.I. PLUG # 43770.
  6. A MAXIMUM TOLERANCE OF .050/(1.27) ALLOWS FOR 2 POINTS OF ELECTRICAL CONTACT. A MAXIMUM TOLERANCE OF .020/(.51) ALLOWS FOR 4 POINTS OF CONTACT.
  7. THIS CONNECTOR ALLOWS FOR .050/(1.27) MAX. MISALIGNMENT IN ANY DIRECTION.
  8. CONNECTOR ASSEMBLIES ARE NOT TO BE MATED OR UNMATED WHILE CIRCUITS ARE LIVE.
  9. THIS PART IS INTENDED FOR ONE PANEL INSERTION ONLY. REMOVAL AND RE-INSERTION CAN DAMAGE THE MOUNTING SPIRALS.
  10. PANEL SHOULD BE PUNCHED IN THE DIRECTION OF CONNECTOR INSERTION.
  11. BOTH SPIRALS SHOULD BE INSERTED INTO THE PANEL AT THE SAME TIME. ROCKING THE PART INTO PLACE MAY CAUSE SPIRAL DAMAGE.
  12. IF THIS PRODUCT IS STORED IN AN ENVIRONMENT WITH A RELATIVE HUMIDITY OF LESS THAN 50%, MOISTURE MUST BE ADDED. REFER TO TECHNICAL ADVISORY AS-45499-002 FOR INSTRUCTIONS.
  13. PART IS FOR USE WITH 5556 OR 44476 SERIES TERMINALS.
  14. THIS DIMENSION TO BE USED FOR ALIGNMENT OF THE MATING CONNECTOR.
  15. PART MAY OR MAY NOT HAVE OPTIONAL RIBS.
  16. THIS PART IS NOT INTENDED TO PROVIDE ANY ALIGNMENT OF CUSTOMER COMPONENTS OR MODULES, SUCH AS POWER SUPPLIES AND CHASSIS.
  17. WIRES ARE TO BE DRESSED IN SUCH A MANNER TO ALLOW THE TERMINALS TO FLOAT FREELY IN THE POCKET.
  18. THIS PART CONFORMS TO CLASS B REQUIREMENTS OF COSMETIC SPECIFICATION PS-45499-002.

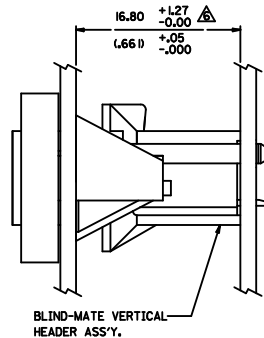
<b>UPDATE HSG NOTE</b> EEC NO: UCP2012-2787 DRAWN BY: DORNINGWEN CHKD: BELL APPROVED: FSMITH DATE: 2012/07/24 DATE: 2012/07/24 DATE: 2012/05/04	<b>QUALITY SYMBOLS</b> ∇=0 ∇=0 ∇=0 ∇=0	<b>GENERAL TOLERANCES (UNLESS SPECIFIED)</b>		<b>DIMENSION STYLE</b> MM/IN		SCALE 4:1	DESIGN UNITS METRIC	THIRD ANGLE PROJECTION		
		4 PLACES ± .015	3 PLACES ± .015	2 PLACES ± 0.38	1 PLACE ± .015	DRAWN BY MAN LAPAZ	DATE 06/18/17	TITLE PANEL-MOUNT RECEPTACLE 36-CIRCUIT BLIND MATE MINI-FIT SERIES		
		ANGULAR ±1/2°				CHECKED BY MBANDURA	DATE 06/18/17	MOLEX INCORPORATED		
		DRAFT WHERE APPLICABLE MUST REMAIN WITHIN DIMENSIONS				APPROVED BY FSMITH	DATE 2012/05/04	MATERIAL NO. 43760-0001	DOCUMENT NO. SD-43760-001	SHEET NO. 1 OF 2



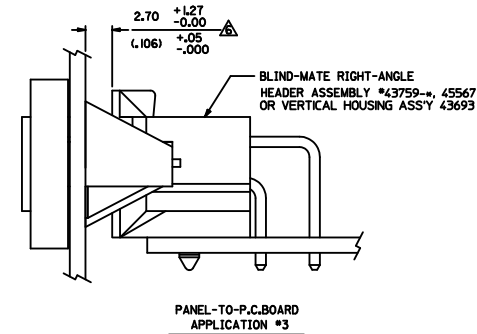
**SECTION "Z-Z"**  
TERMINAL ORIENTATION



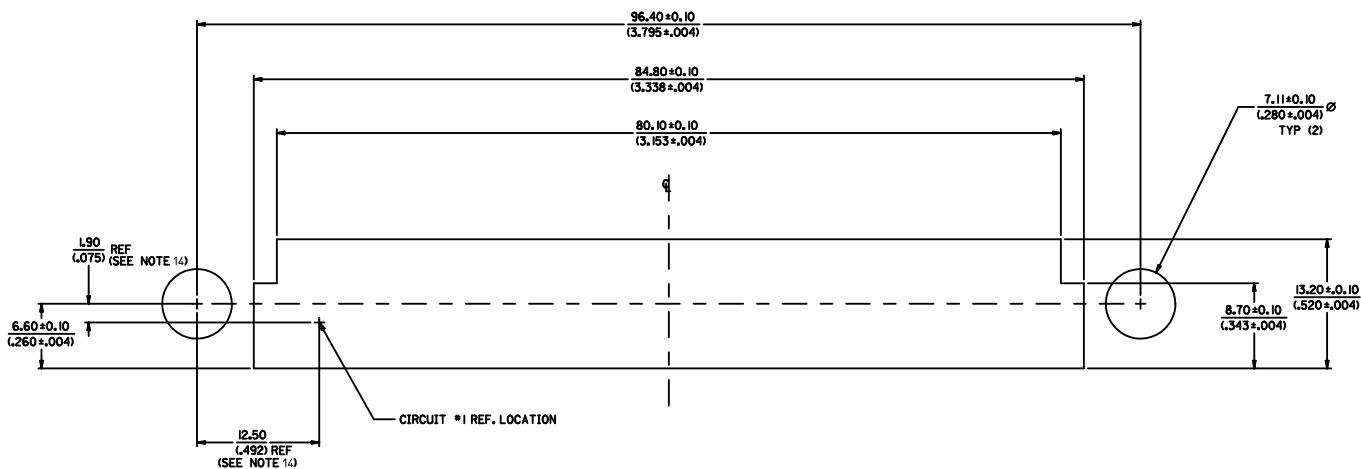
PANEL-TO-PANEL  
APPLICATION #1



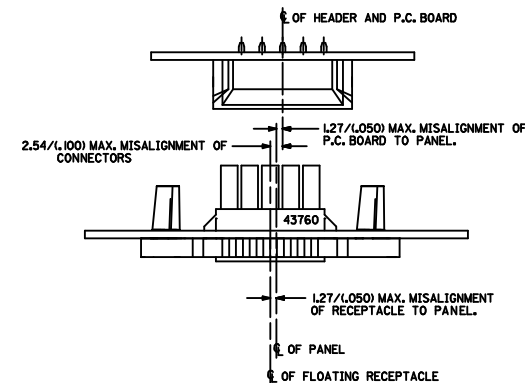
PANEL-TO-P.C.BOARD  
APPLICATION #2



PANEL-TO-P.C.BOARD  
APPLICATION #3



RECOMMENDED PANEL CUT-OUT FOR L27+0.30/L050+0.012 THICK PANEL



ALIGNMENT TOLERANCES FOR L27/L050 MAX. BOARD-TO-PANEL MISALIGNMENT (±L27/L050) RECEPTACLE FLOAT

SEE SHEET 1 IEC NO. UCP2012-2787 DRAWN BY: DRWNINGUEN CHECKED BY: CHYDIBELL APPROVED BY: FSMITH DATE: 2012/02/24 DATE: 2012/05/04 DATE: 2012/05/04	QUALITY SYMBOLS	GENERAL TOLERANCES (UNLESS SPECIFIED)	DIMENSION STYLE	SCALE	DESIGN UNITS	THIRD ANGLE PROJECTION
	▽=0	mm INCH	MM/IN	4:1	METRIC	☉
	▽=0	4 PLACES ± --- ± ---	MAN LAPAZ 06/18/97	DATE	TITLE	PANEL-MOUNT RECEPTACLE
	▽=0	3 PLACES ± --- ± .015	CHECKED BY: MBANDURA 06/18/97	DATE		36-CIRCUIT BLIND MATE
	1 PLACE ± --- ± ---	ANGULAR ±1/2°	APPROVED BY: FSMITH 2012/05/04	DATE		MINI-FIT SERIES
		DRAFT WHERE APPLICABLE MUST REMAIN WITHIN DIMENSIONS	MATERIAL NO. 43760-0001	DOCUMENT NO. SD-43760-001		MOLEX INCORPORATED
			SIZE D			THIS DRAWING CONTAINS INFORMATION THAT IS PROPRIETARY TO MOLEX INCORPORATED AND SHOULD NOT BE USED WITHOUT WRITTEN PERMISSION