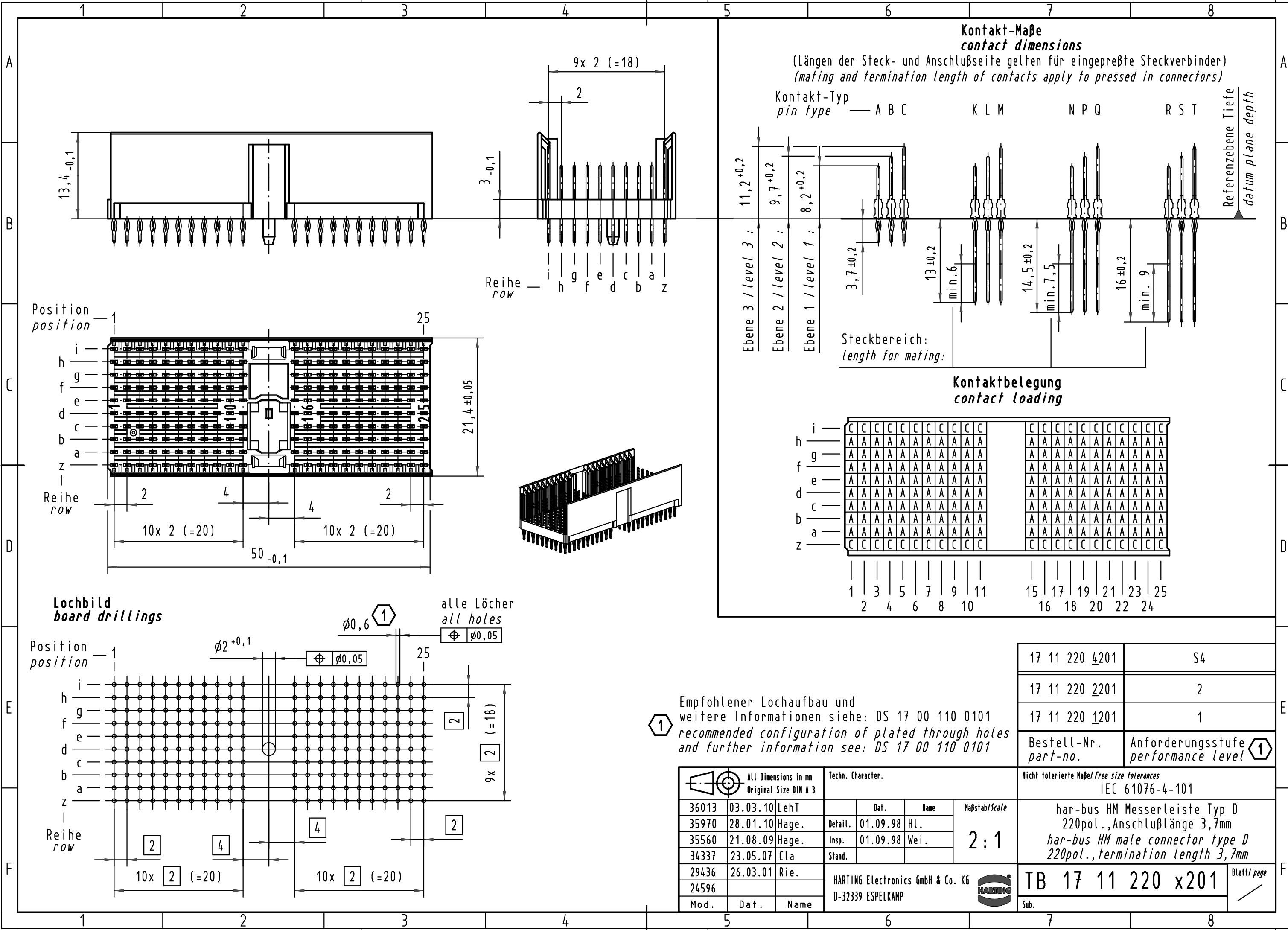


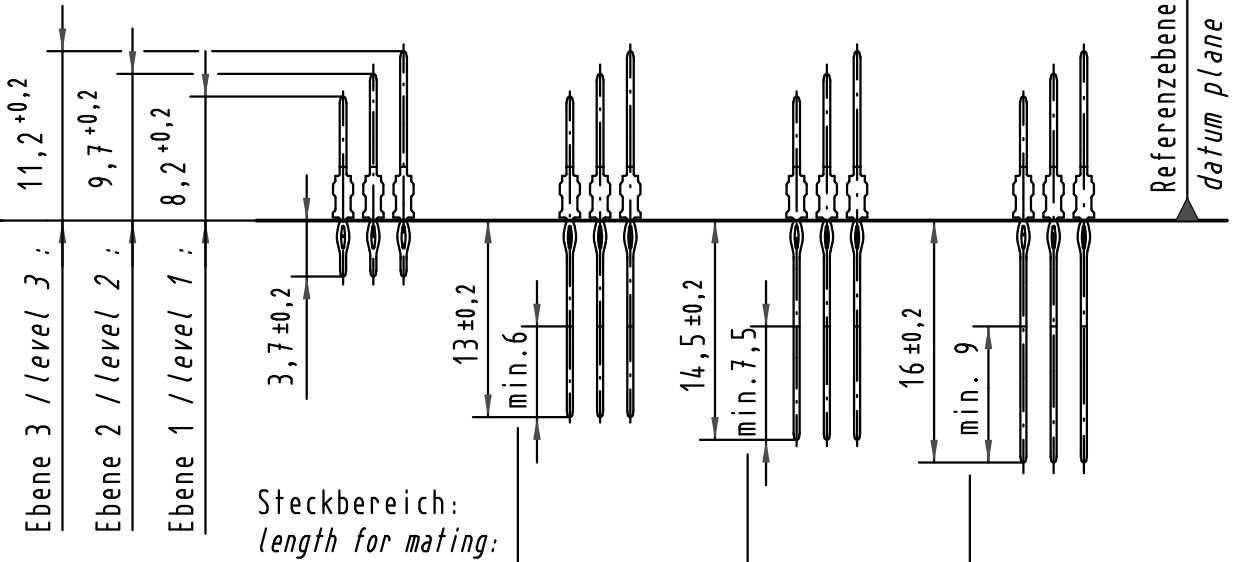
Alle Rechte vorbehalten/ All rights reserved



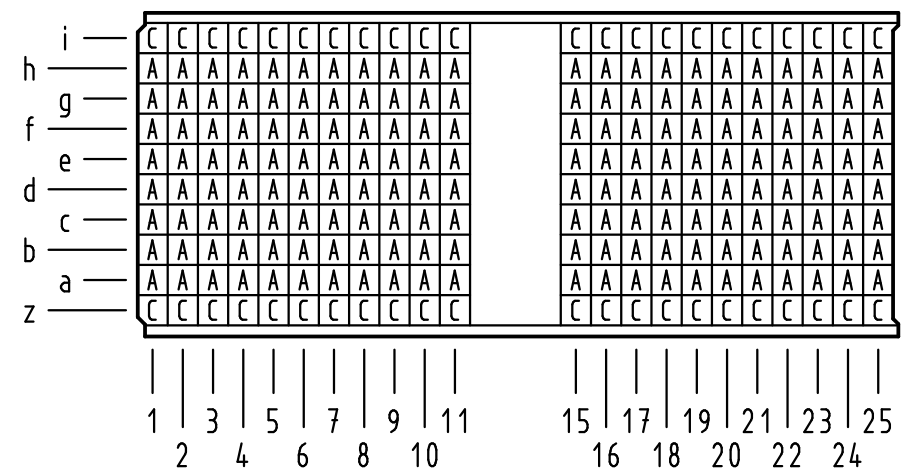
**Kontakt-Maße**  
**contact dimensions**

(Längen der Steck- und Anschlußseite gelten für eingepreßte Steckverbinder)  
(mating and termination length of contacts apply to pressed in connectors)

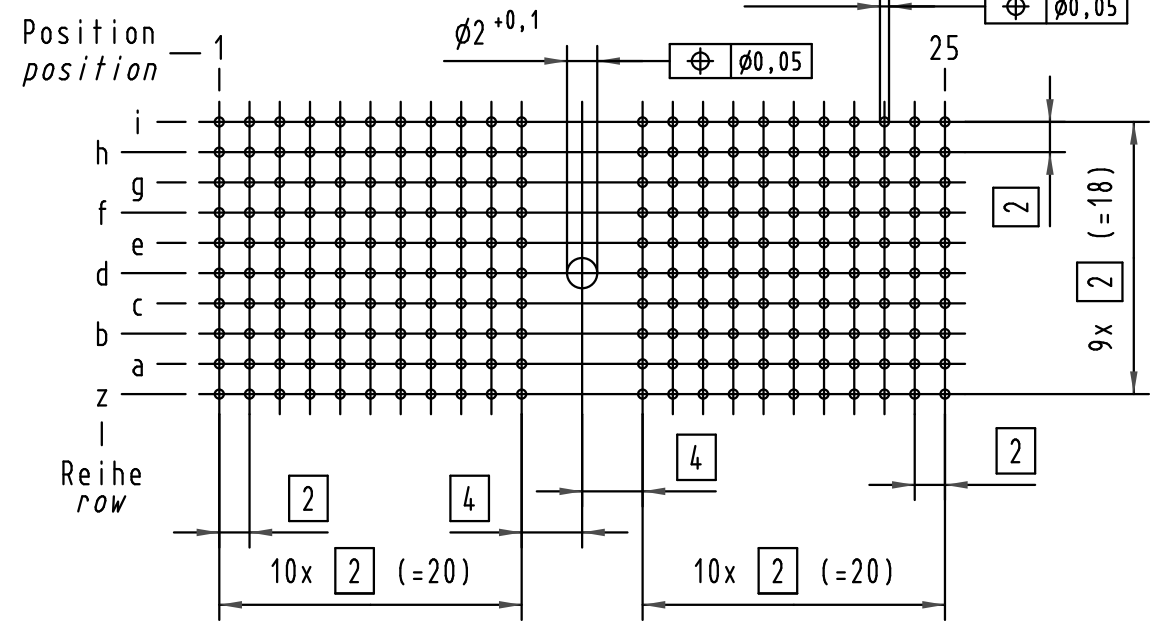
Kontakt-Typ pin type — A B C K L M N P Q R S T



**Kontaktbelegung**  
**contact loading**



**Lochbild**  
**board drillings**



Empfohlener Lochaufbau und weitere Informationen siehe: DS 17 00 110 0101  
recommended configuration of plated through holes and further information see: DS 17 00 110 0101

|                      |                                       |
|----------------------|---------------------------------------|
| 17 11 220 4201       | S4                                    |
| 17 11 220 2201       | 2                                     |
| 17 11 220 1201       | 1                                     |
| Bestell-Nr. part-no. | Anforderungsstufe performance level 1 |

| All Dimensions in mm<br>Original Size DIN A 3 |          | Techn. Character. |                                   |          | Nicht tolerierte Maßel/Free size tolerances<br>IEC 61076-4-101 |                                                                                                                                        |                   |
|-----------------------------------------------|----------|-------------------|-----------------------------------|----------|----------------------------------------------------------------|----------------------------------------------------------------------------------------------------------------------------------------|-------------------|
| Mod.                                          | Dat.     | Name              | Dat.                              | Name     | Maßstab/Scale                                                  | har-bus HM Messerleiste Typ D<br>220pol., Anschlußlänge 3,7mm<br>har-bus HM male connector type D<br>220pol., termination length 3,7mm |                   |
| 36013                                         | 03.03.10 | LehT              |                                   |          | 2:1                                                            |                                                                                                                                        | TB 17 11 220 x201 |
| 35970                                         | 28.01.10 | Hage.             | Detail.                           | 01.09.98 |                                                                | HL.                                                                                                                                    |                   |
| 35560                                         | 21.08.09 | Hage.             | Insp.                             | 01.09.98 |                                                                | Weil.                                                                                                                                  |                   |
| 34337                                         | 23.05.07 | Clä               | Stand.                            |          |                                                                |                                                                                                                                        |                   |
| 29436                                         | 26.03.01 | Rie.              | HARTING Electronics GmbH & Co. KG |          |                                                                | Sub.                                                                                                                                   |                   |
| 24596                                         |          |                   | D-32339 ESPELKAMP                 |          |                                                                |                                                                                                                                        |                   |
| Mod.                                          | Dat.     | Name              | HARTING                           |          |                                                                | Blatt/page                                                                                                                             |                   |