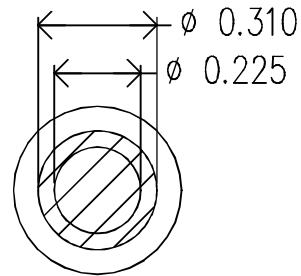
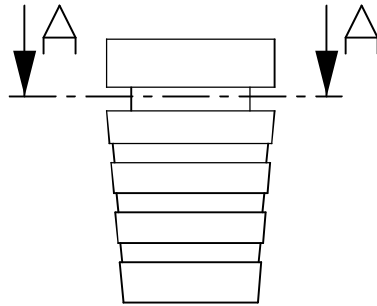
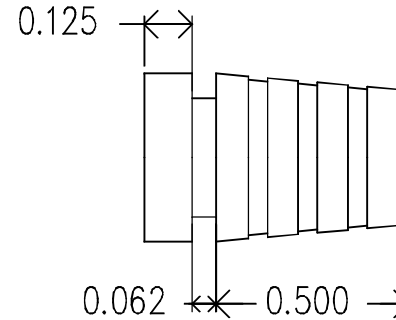
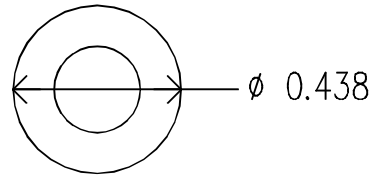
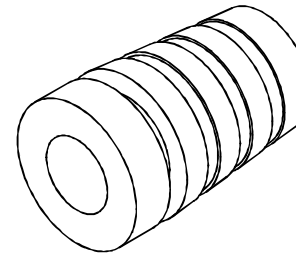


REVISIONS				
ZONE	REV.	DESCRIPTION	DATE	APPROVED



A-A



MOLD MATERIAL: ISC P/N: 5000214, PVC, M1472, Black, RoHS

Dimensions are subject to change.
 PROPRIETARY AND CONFIDENTIAL
 THE INFORMATION CONTAINED IN THIS DRAWING IS THE SOLE PROPERTY OF ISC ENGINEERING. ANY REPRODUCTION IN PART OR AS A WHOLE WITHOUT THE WRITTEN PERMISSION OF ISC ENGINEERING IS PROHIBITED.

		DIMENSIONS ARE IN INCHES		NAME	DATE	ISC Engineering 4351 Schaefer Ave, Chino, CA 91710 Ph: 909-596-3315 Fax: 909-596-3335 www.iscengineering.com www.overmoldtooling.com
		TOLERANCES: FRACTIONAL ± ANGULAR: MACH ± BEND ± TWO PLACE DECIMAL ± THREE PLACE DECIMAL ±		DRAWN	R FIERRO	
		MATERIAL		CHECKED		
NEXT ASSY		USED ON		ENG APPR.		
APPLICATION		DO NOT SCALE DRAWING		MFG APPR.		
				Q.A.		
				COMMENTS:		1461040-225-B-310-440-0
				SIZE	DWG. NO.	REV.
				A	1460053	
				SCALE: 2:1	WEIGHT:	SHEET 1 OF 1

ISC ENGINEERING
CONTROLLED COPY
 Rich Fierro 01/23/2019