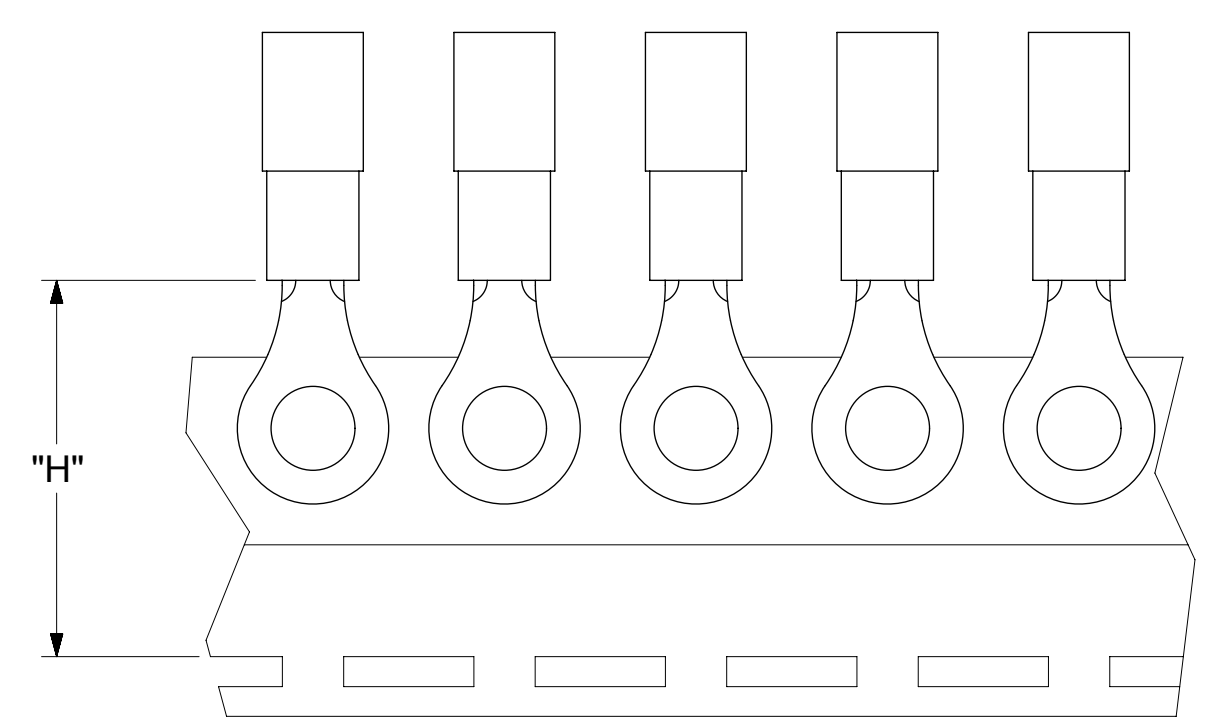
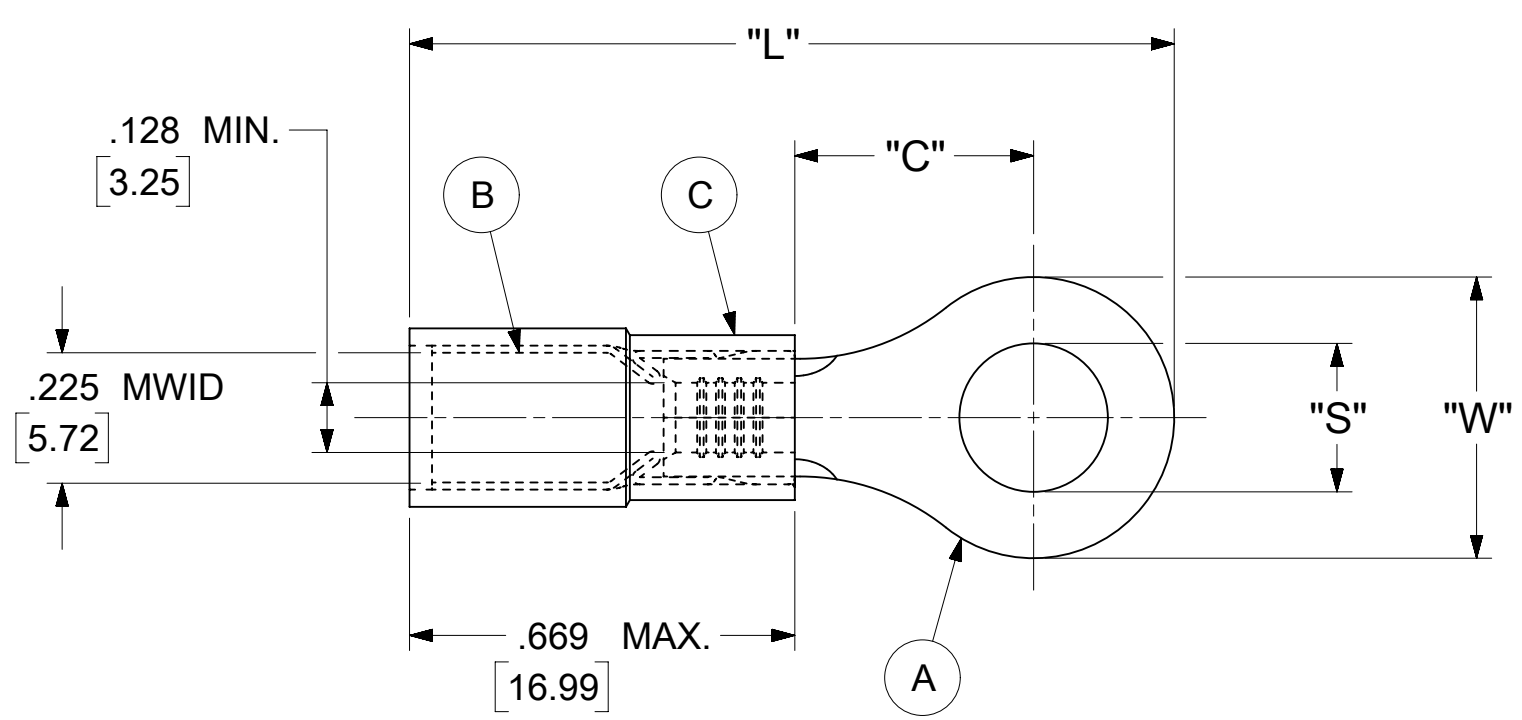


LOOSE PIECE		TAPE MOUNTED		SPECIFICATIONS						
MATERIAL NUMBER	ENGINEERING NUMBER	MATERIAL NUMBER	ENGINEERING NUMBER	STUD SIZE	"S" ±.005 [0.13]	"W" ±.010 [0.25]	"C" MIN.	"L" MAX.	"H"	STOCK ±.001 [0.025] THICKNESS
190730101	C-501-12	---	---	12	.515 [13.08]	.750 [19.05]	.611 [15.52]	1.700 [43.18]	---	.040 [1.02]
---	---	---	---	14	.265 [6.73]					
---	---	---	---	38	.390 [9.91]					
---	---	---	---	56	.328 [8.33]					
190730105	C-501-76	---	---	76	.453 [11.51]	.375 [9.53]	.303 [7.70]	1.205 [30.61]	.980 [24.89]	.040 [1.02]
190730106	C-528-04	---	---	4	.119 [3.02]					
190730108	C-528-06	---	---	6	.146 [3.71]					
190730110	C-528-08	---	---	8	.173 [4.39]					
190730113	C-528-10	190730115	C-528-10T	10	.198 [5.03]	.530 [13.46]	.393 [9.98]	1.372 [34.85]	.980 [24.89]	.040 [1.02]
190730116	C-528-209	---	---	209	.209 [5.31]					
190730117	C-530-10	---	---	10	.198 [5.03]					
190730119	C-530-14	190730121	C-530-14T	14	.265 [6.73]					
---	---	---	---	38	.390 [9.91]	.282 [7.16]	.306 [7.77]	1.161 [29.49]	.980 [24.89]	.040 [1.02]
190730123	C-530-56	190730124	C-530-56T	56	.328 [8.33]					
---	---	---	---	4	.119 [3.02]					
---	---	---	---	4	.119 [3.02]					
190730130	C-536-06	---	---	6	.146 [3.71]	.592 [15.04]	.466 [11.84]	1.476 [37.49]	1.172 [29.77]	.040 [1.02]
190730132	C-536-08	---	---	8	.173 [4.39]					
---	---	---	---	10	.198 [5.03]					
190730136	C-540-14	---	---	14	.265 [6.73]					
190730139	C-540-38	---	---	38	.390 [9.91]	.592 [15.04]	.466 [11.84]	1.476 [37.49]	1.172 [29.77]	.040 [1.02]
190730143	C-540-56	---	---	56	.328 [8.33]					
---	---	---	---	209	.209 [5.31]					
---	---	---	---	413	.413 [10.49]					

- NOTES:
- MATERIAL:
    - (A). RING TONGUE TERMINAL: COPPER
    - PLATING: ELECTRO-TIN (.0003 MIN.)
    - (B). TIN-PLATED BRASS FUNNEL FERRULE
    - (C). INSULATION: NYLON (YELLOW)
  - MWID: MAXIMUM WIRE INSULATION DIAMETER
  - WIRE SIZE: 12 -10 AWG  
4.0 -6.0 MM<sup>2</sup>
  - "UL" LISTING #E32244  
"CSA" LISTING #18689
  - ALL DIMENSIONS IN INCHES/[MM].
  - PARTS ARE ROHS COMPLIANT.
  - DIMS. SHOWN ARE FOR REFERENCE ONLY.



PARTS ON TAPE

<b>SYMBOLS</b> DIMENSION UNITS: INCH/MM SCALE: NTS GENERAL TOLERANCES (UNLESS SPECIFIED): 4 PLACES ± [ ] ± [ ] 3 PLACES ± [ ] ± 0.005 2 PLACES ± 0.13 ± 0.01 1 PLACE ± 0.25 ± [ ] 0 PLACES ± [ ] ± [ ] ANGULAR TOL ± 0.5 ° DRAFT WHERE APPLICABLE MUST REMAIN WITHIN DIMENSIONS THIRD ANGLE PROJECTION DRAWING SERIES: C-SIZE 19073	THIS DRAWING CONTAINS INFORMATION THAT IS PROPRIETARY TO MOLEX ELECTRONIC TECHNOLOGIES, LLC AND SHOULD NOT BE USED WITHOUT WRITTEN PERMISSION CURRENT REV DESC: MIGRATION TO ECTR/NX EC NO: 619818 DRWN: ABENJAMINLW 2019/06/20 CHK'D: GROJAS01 2019/06/27 APPR: JMACNEIL 2019/07/10 INITIAL REVISION: DRWN: JJ 1984/11/15 APPR: JMACNEIL 2019/07/10		 RING TONGUE TERMINAL AVIKRIMP 500-SERIES PRODUCT CUSTOMER DRAWING		
	DOCUMENT NUMBER: 190730101	DOC TYPE: PSD			
	MATERIAL NUMBER: SEE TABLE	CUSTOMER: GENERAL MARKET	SHEET NUMBER: 1 OF 1		
	DOCUMENT STATUS: P1		RELEASE DATE: 2019/07/10	15:39:30	