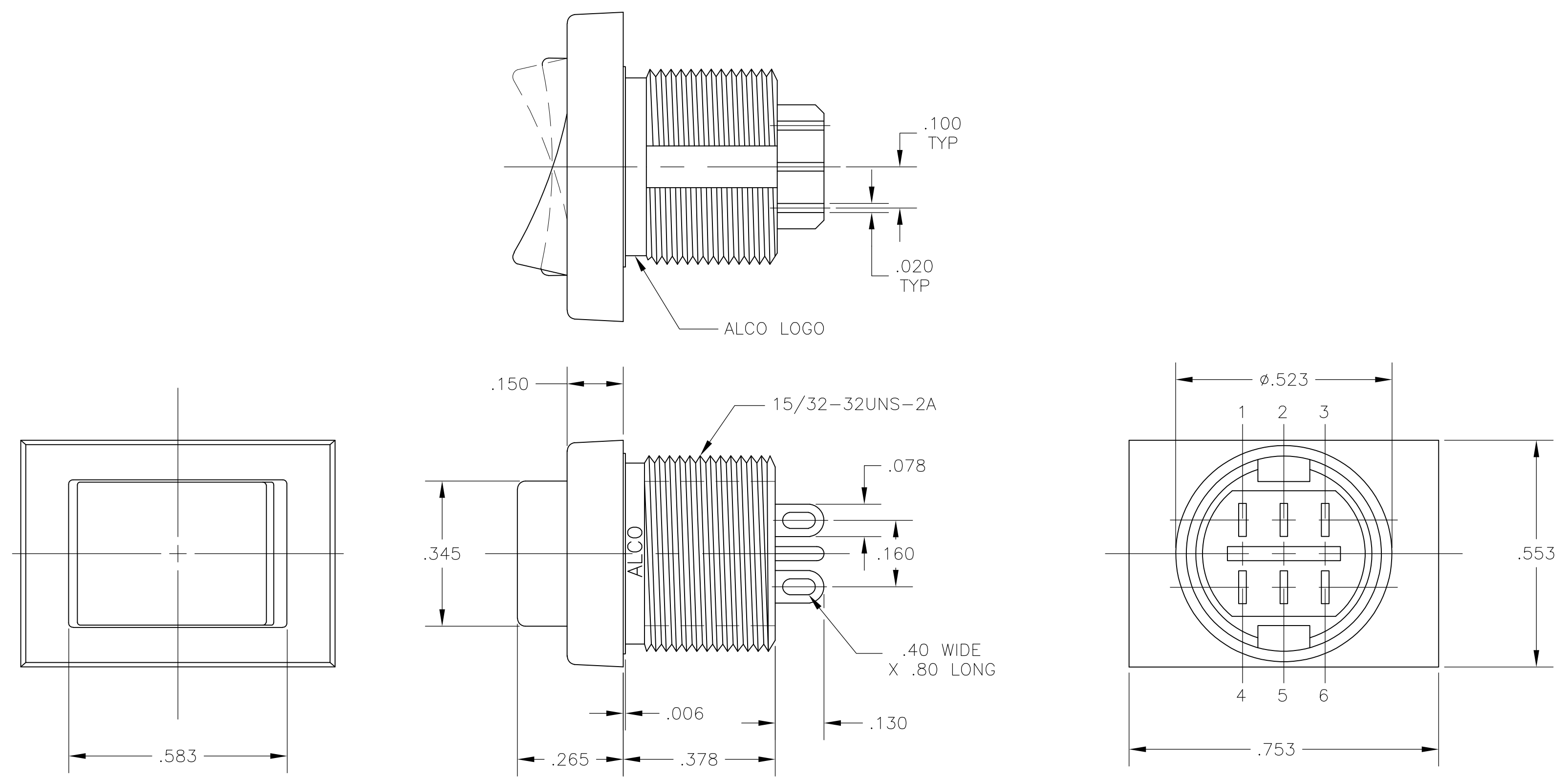


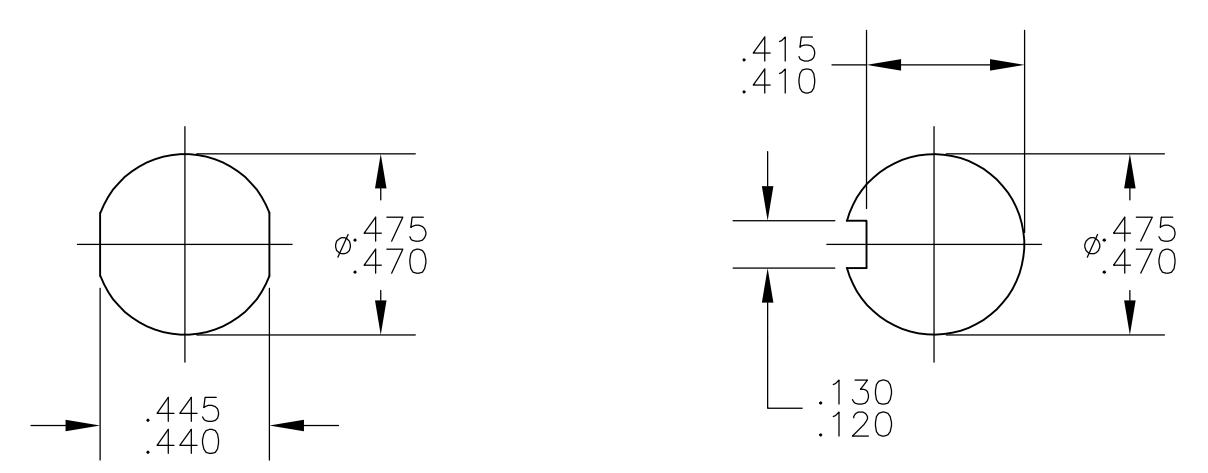
NOTES:

1. ALL MATERIALS AND FINISHES COMPLY WITH EU DIRECTIVE 2002/95/EC OF 27JAN2003 (RoHS).
2. TERMINAL NUMBERS ARE FOR REFERENCE ONLY AND DO NOT APPEAR ON THE SWITCHES.
3. MOUNTING HARDWARE: (1) HEX NUT AND (1) INTERNAL TOOTH LOCKWASHER SUPPLIED WITH SWITCH.



MATERIAL CHART		
COMPONENT NAME	BASE MATERIAL	FINISH
CASE	PPO, BLACK, UL94-HB	
SPRING	MUSIC WIRE	
SPRING, G FUNCTION	MUSIC WIRE	
INSULATOR	POLYETHERIMIDE, NATURAL	
TERMINAL, END, P, N & S FUNCTIONS	SILVER CLAD COPPER	SILVER OVER NICKEL
TERMINAL, CENTER, P, N & S FUNCTIONS	BRASS	GOLD OVER NICKEL
YOKE, P & S FUNCTIONS	BRASS	GOLD OVER NICKEL
ROCKER CONTACT, N FUNCTION	SILVER CLAD COPPER	
ROCKER CONTACT, P & S FUNCTIONS	SILVER CLAD COPPER	SILVER
NUT	BRASS	NICKEL
LOCKWASHER	STAINLESS STEEL	
TERMINAL SEAL	ACRYLIC RESIN	

SPECIFICATION CHART	
RATING	3A @ 125 VAC OR 28 VDC, RESISTIVE
INITIAL CONTACT RESISTANCE	20 MILLIOHMS MAX.
INSULATION RESISTANCE	1,000 MEGAOHMS MIN @ 500 VDC
DIELECTRIC WITHSTANDING VOLTAGE	500 V RMS AT SEA LEVEL
ELECTRICAL LIFE, 2 POSITION	80,000 CYCLES
ELECTRICAL LIFE, 3 POSITION	10,000 CYCLES
MECHANICAL LIFE, 2 POSITION	100,000 CYCLES
MECHANICAL LIFE, 3 POSITION	50,000 CYCLES
OPERATING TEMPERATURE	-20°C TO +80°C
STORAGE TEMPERATURE	-45°C TO +95°C



PANEL CUTOUTS  
SCALE 2:1

FUNCTION CHART							
PART NUMBER	ALCO P/N	POLE	THROWS	RATING			
1825421-1	TRD23N10WL04	2	2	3A	ON	NONE	ON
1825421-2	TRD23N10WL04	2	2	3A	ON	OFF	ON
1825421-3	TRD23N10WL04	2	2	3A	(ON)	NONE	(ON)
					TERMINALS CONNECTED	2-1 5-4	2-3 5-6

NONE: NO MECHANICAL POSITION  
 OFF: MECHANICAL POSITION WITH NO ELECTRIC CONNECTION  
 (ON): MOMENTARY ACTION

THIS DRAWING IS A CONTROLLED DOCUMENT.		DWN R. WICJEL	24MAY82	Tyco Electronics Corporation Harrisburg, Pa 17105-3608													
DIMENSIONS: INCHES		TOLERANCES UNLESS OTHERWISE SPECIFIED:		APPROVED K.F.													
<table border="1"> <tr><td>0 PLC</td><td>± .01</td></tr> <tr><td>1 PLC</td><td>± .01</td></tr> <tr><td>2 PLC</td><td>± .01</td></tr> <tr><td>3 PLC</td><td>± .010</td></tr> <tr><td>4 PLC</td><td>± .01</td></tr> <tr><td>ANGLES</td><td>± .1</td></tr> </table>		0 PLC	± .01	1 PLC	± .01	2 PLC	± .01	3 PLC	± .010	4 PLC	± .01	ANGLES	± .1	PRODUCT SPEC		NAME	
0 PLC	± .01																
1 PLC	± .01																
2 PLC	± .01																
3 PLC	± .010																
4 PLC	± .01																
ANGLES	± .1																
MATERIAL SEE TABLE		FINISH SEE TABLE		TRD SERIES ROCKER SWITCH, 2 POLE, 3A, WIRE LUG TERMINALS													
WEIGHT		SIZE		RESTRICTED TO													
CUSTOMER DRAWING		A1 00779		1825421													
SCALE 4:1		SHEET 1 OF 1		REV A													