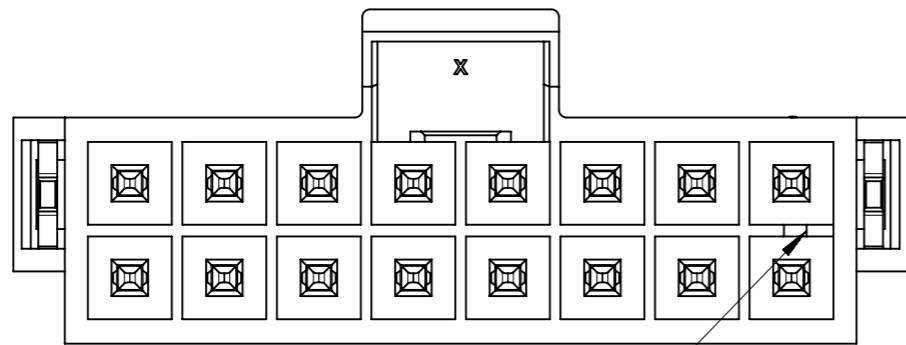


RECOMMENDED PCB(CONNECTOR SIDE VIEW)  
THICKNESS=1.6 TO 2.4 MM

FUNCTIONAL SYMBOLS	THIS DRAWING CONTAINS INFORMATION THAT IS PROPRIETARY TO MOLEX ELECTRONIC TECHNOLOGIES, LLC AND SHOULD NOT BE USED WITHOUT WRITTEN PERMISSION		CURRENT REV DESC:		<b>molex</b>
	▽A = 0	mm	SCALE	5:1	
DIVISIONAL SYMBOLS	GENERAL TOLERANCES (UNLESS SPECIFIED)				HEADER OF NANO-FIT, D/R, CLIP, VERTICAL POWER CONNECTOR
	▽E = 0	ANGULAR TOL ± 3.0°			
DIVISIONAL SYMBOLS	4 PLACES	±	EC NO: 697101		PRODUCT CUSTOMER DRAWING
	3 PLACES	±	DRWN: GLLI 2022/02/24		
	2 PLACES	±	CHK'D: XQZHANG 2022/02/25		
	1 PLACE	±	APPR: XQZHANG 2022/02/25		
	0 PLACES	±	INITIAL REVISION:		
DRAFT WHERE APPLICABLE MUST REMAIN WITHIN DIMENSIONS	THIRD ANGLE PROJECTION		DRAWING	SERIES	DOCUMENT NUMBER
			A3-SIZE	105312	1053121000-SD
MATERIAL NUMBER			CUSTOMER	DOC TYPE	DOC PART
			GENERAL MARKET	PSD	000
SHEET NUMBER				REVISION	
1 OF 5				B1	

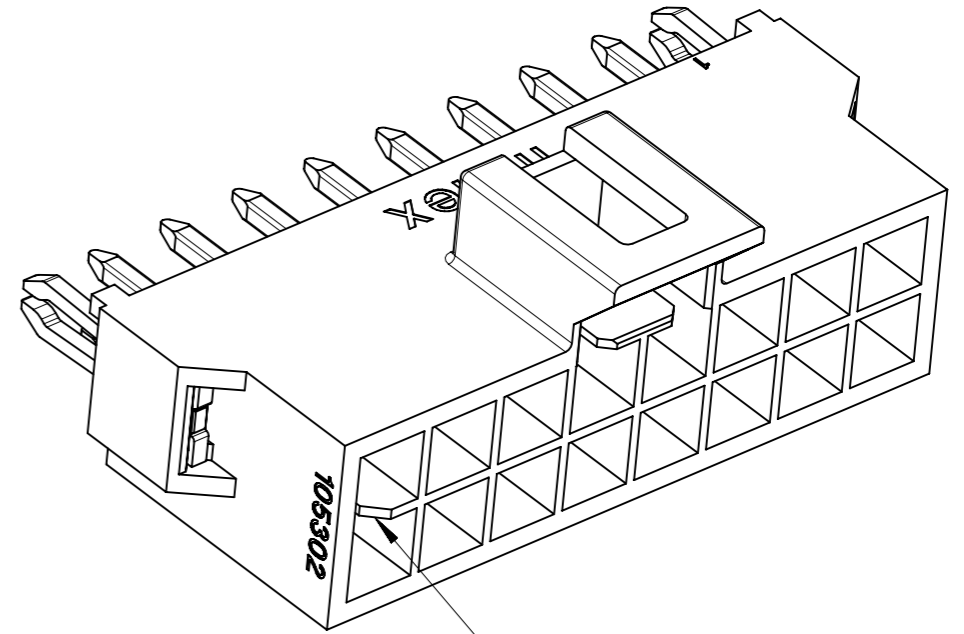


KEY A

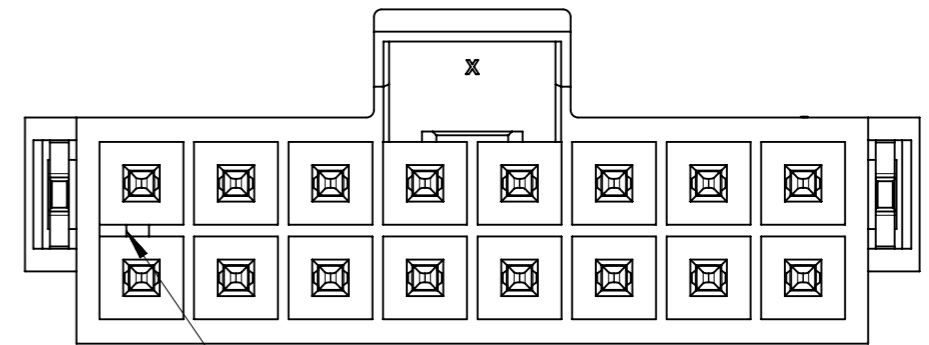


KEY A

BLACK



KEY B



KEY B

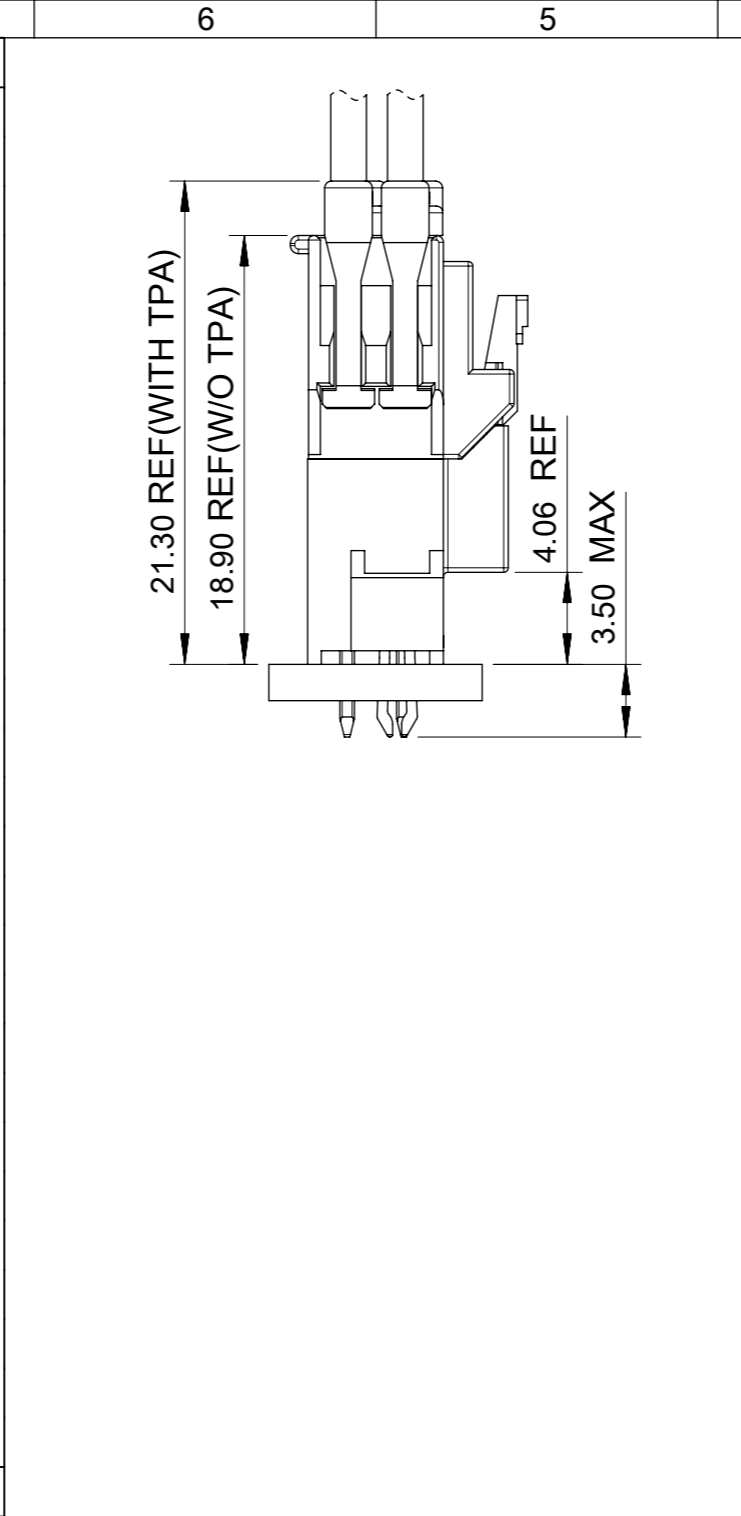
NATURAL

COLOR OPTION

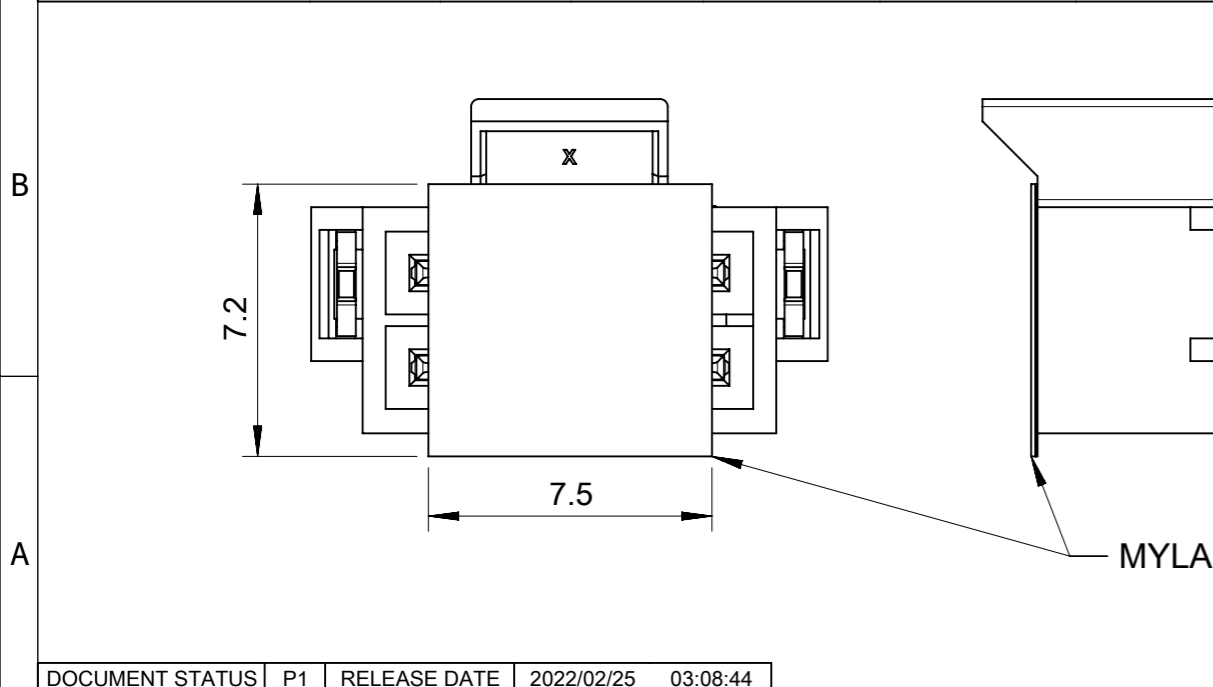
FUNCTIONAL SYMBOLS	THIS DRAWING CONTAINS INFORMATION THAT IS PROPRIETARY TO MOLEX ELECTRONIC TECHNOLOGIES, LLC AND SHOULD NOT BE USED WITHOUT WRITTEN PERMISSION		CURRENT REV DESC:		<b>molex</b>			
	▽A = 0	mm						SCALE 5:1
DIVISIONAL SYMBOLS	GENERAL TOLERANCES (UNLESS SPECIFIED)		EC NO: 697101 DRWN: GLLI CHK'D: XQZHANG APPR: XQZHANG INITIAL REVISION: DRWN: GLLI APPR: YXZHENG		HEADER OF NANO-FIT, D/R, CLIP, VERTICAL POWER CONNECTOR			
	▽E = 0	ANGULAR TOL ± 3.0°						
	▽F = 0	4 PLACES ±			2022/02/24	PRODUCT CUSTOMER DRAWING		
		3 PLACES ± 0.1			2022/02/25			
		2 PLACES ± 0.2			2022/02/25	DOCUMENT NUMBER 1053121000-SD DOC TYPE PSD DOC PART 000 REVISION B1		
	1 PLACE ± 0.3	2019/09/24						
	0 PLACES ±	2020/03/16	MATERIAL NUMBER 105312 CUSTOMER GENERAL MARKET SHEET NUMBER 2 OF 5					
DRAFT WHERE APPLICABLE MUST REMAIN WITHIN DIMENSIONS		THIRD ANGLE PROJECTION				DRAWING A3-SIZE	SERIES 105312	

DOCUMENT STATUS	P1	RELEASE DATE	2022/02/25	03:08:44
-----------------	----	--------------	------------	----------

10	9	8	7	6	5	4	3	2	1
PART NUMBER	DIM 'A'	DIM 'B'	DIM 'C'	CKT SIZE	PLATING	MYLAR			
105312-3504	8.66	5.94	6.84	4	TIN				
105312-3506	11.16	8.44	9.34	6					
105312-3508	13.66	10.94	11.84	8					
105312-3510	16.16	13.44	14.34	10					
105312-3512	18.66	15.94	16.84	12					
105312-3514	21.16	18.44	19.34	14					
105312-3516	23.66	20.94	21.84	16					
105312-3704	8.66	5.94	6.84	4			GOLD 0.38		
105312-3706	11.16	8.44	9.34	6					
105312-3708	13.66	10.94	11.84	8					
105312-3710	16.16	13.44	14.34	10					
105312-3712	18.66	15.94	16.84	12					
105312-3714	21.16	18.44	19.34	14					
105312-3716	23.66	20.94	21.84	16					
105312-3604	8.66	5.94	6.84	4	GOLD 0.76	YES			
105312-3606	11.16	8.44	9.34	6					
105312-3608	13.66	10.94	11.84	8					
105312-3610	16.16	13.44	14.34	10					
105312-3612	18.66	15.94	16.84	12					
105312-3614	21.16	18.44	19.34	14					
105312-3616	23.66	20.94	21.84	16					
105312-3804	8.66	5.94	6.84	4			GOLD 0.76 + LUBE		
105312-3806	11.16	8.44	9.34	6					
105312-3808	13.66	10.94	11.84	8					
105312-3810	16.16	13.44	14.34	10					
105312-3812	18.66	15.94	16.84	12					
105312-3814	21.16	18.44	19.34	14					
105312-3816	23.66	20.94	21.84	16					
COLOR: BLACK									

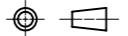


10	9	8	7	6	5	4	3	2	1
PART NUMBER	DIM 'A'	DIM 'B'	DIM 'C'	CKT SIZE	PLATING	MYLAR			
105312-4504	8.66	5.94	6.84	4	TIN				
105312-4506	11.16	8.44	9.34	6					
105312-4508	13.66	10.94	11.84	8					
105312-4510	16.16	13.44	14.34	10					
105312-4512	18.66	15.94	16.84	12					
105312-4514	21.16	18.44	19.34	14					
105312-4516	23.66	20.94	21.84	16					
105312-4704	8.66	5.94	6.84	4			GOLD 0.38		
105312-4706	11.16	8.44	9.34	6					
105312-4708	13.66	10.94	11.84	8					
105312-4710	16.16	13.44	14.34	10					
105312-4712	18.66	15.94	16.84	12					
105312-4714	21.16	18.44	19.34	14					
105312-4716	23.66	20.94	21.84	16					
105312-4604	8.66	5.94	6.84	4	GOLD 0.76	YES			
105312-4606	11.16	8.44	9.34	6					
105312-4608	13.66	10.94	11.84	8					
105312-4610	16.16	13.44	14.34	10					
105312-4612	18.66	15.94	16.84	12					
105312-4614	21.16	18.44	19.34	14					
105312-4616	23.66	20.94	21.84	16					
105312-4804	8.66	5.94	6.84	4			GOLD 0.76 + LUBE		
105312-4806	11.16	8.44	9.34	6					
105312-4808	13.66	10.94	11.84	8					
105312-4810	16.16	13.44	14.34	10					
105312-4812	18.66	15.94	16.84	12					
105312-4814	21.16	18.44	19.34	14					
105312-4816	23.66	20.94	21.84	16					
COLOR: NATURAL									



FUNCTIONAL SYMBOLS	THIS DRAWING CONTAINS INFORMATION THAT IS PROPRIETARY TO MOLEX ELECTRONIC TECHNOLOGIES, LLC AND SHOULD NOT BE USED WITHOUT WRITTEN PERMISSION	CURRENT REV DESC:		<b>molex</b>																																																																		
	<table border="1"> <tr><td>FUNCTIONAL SYMBOLS</td><td>THIS DRAWING CONTAINS INFORMATION THAT IS PROPRIETARY TO MOLEX ELECTRONIC TECHNOLOGIES, LLC AND SHOULD NOT BE USED WITHOUT WRITTEN PERMISSION</td><td colspan="2">CURRENT REV DESC:</td><td colspan="4" rowspan="2"><b>molex</b></td></tr> <tr><td>FUNCTIONAL SYMBOLS</td><td>FUNCTIONAL SYMBOLS</td><td>FUNCTIONAL SYMBOLS</td><td>FUNCTIONAL SYMBOLS</td><td colspan="4" rowspan="2">HEADER OF NANO-FIT, D/R, CLIP, VERTICAL POWER CONNECTOR</td></tr> <tr><td>FUNCTIONAL SYMBOLS</td><td>FUNCTIONAL SYMBOLS</td><td>FUNCTIONAL SYMBOLS</td><td>FUNCTIONAL SYMBOLS</td><td colspan="4" rowspan="2">PRODUCT CUSTOMER DRAWING</td></tr> <tr><td>FUNCTIONAL SYMBOLS</td><td>FUNCTIONAL SYMBOLS</td><td>FUNCTIONAL SYMBOLS</td><td>FUNCTIONAL SYMBOLS</td><td colspan="4" rowspan="2">DOCUMENT NUMBER: 1053121000-SD</td></tr> <tr><td>FUNCTIONAL SYMBOLS</td><td>FUNCTIONAL SYMBOLS</td><td>FUNCTIONAL SYMBOLS</td><td>FUNCTIONAL SYMBOLS</td><td colspan="4" rowspan="2">DOC TYPE: PSD</td></tr> <tr><td>FUNCTIONAL SYMBOLS</td><td>FUNCTIONAL SYMBOLS</td><td>FUNCTIONAL SYMBOLS</td><td>FUNCTIONAL SYMBOLS</td><td colspan="4" rowspan="2">DOC PART: 000</td></tr> <tr><td>FUNCTIONAL SYMBOLS</td><td>FUNCTIONAL SYMBOLS</td><td>FUNCTIONAL SYMBOLS</td><td>FUNCTIONAL SYMBOLS</td><td colspan="4" rowspan="2">REVISION: B1</td></tr> <tr><td>FUNCTIONAL SYMBOLS</td><td>FUNCTIONAL SYMBOLS</td><td>FUNCTIONAL SYMBOLS</td><td>FUNCTIONAL SYMBOLS</td><td colspan="4" rowspan="2">SHEET NUMBER: 3 OF 5</td></tr> </table>	FUNCTIONAL SYMBOLS	THIS DRAWING CONTAINS INFORMATION THAT IS PROPRIETARY TO MOLEX ELECTRONIC TECHNOLOGIES, LLC AND SHOULD NOT BE USED WITHOUT WRITTEN PERMISSION					CURRENT REV DESC:		<b>molex</b>				FUNCTIONAL SYMBOLS	FUNCTIONAL SYMBOLS	FUNCTIONAL SYMBOLS	FUNCTIONAL SYMBOLS	HEADER OF NANO-FIT, D/R, CLIP, VERTICAL POWER CONNECTOR				FUNCTIONAL SYMBOLS	FUNCTIONAL SYMBOLS	FUNCTIONAL SYMBOLS	FUNCTIONAL SYMBOLS	PRODUCT CUSTOMER DRAWING				FUNCTIONAL SYMBOLS	FUNCTIONAL SYMBOLS	FUNCTIONAL SYMBOLS	FUNCTIONAL SYMBOLS	DOCUMENT NUMBER: 1053121000-SD				FUNCTIONAL SYMBOLS	FUNCTIONAL SYMBOLS	FUNCTIONAL SYMBOLS	FUNCTIONAL SYMBOLS	DOC TYPE: PSD				FUNCTIONAL SYMBOLS	FUNCTIONAL SYMBOLS	FUNCTIONAL SYMBOLS	FUNCTIONAL SYMBOLS	DOC PART: 000				FUNCTIONAL SYMBOLS	FUNCTIONAL SYMBOLS	FUNCTIONAL SYMBOLS	FUNCTIONAL SYMBOLS	REVISION: B1				FUNCTIONAL SYMBOLS	FUNCTIONAL SYMBOLS	FUNCTIONAL SYMBOLS	FUNCTIONAL SYMBOLS	SHEET NUMBER: 3 OF 5				SCALE: 5:1
FUNCTIONAL SYMBOLS	THIS DRAWING CONTAINS INFORMATION THAT IS PROPRIETARY TO MOLEX ELECTRONIC TECHNOLOGIES, LLC AND SHOULD NOT BE USED WITHOUT WRITTEN PERMISSION	CURRENT REV DESC:		<b>molex</b>																																																																		
FUNCTIONAL SYMBOLS	FUNCTIONAL SYMBOLS	FUNCTIONAL SYMBOLS	FUNCTIONAL SYMBOLS					HEADER OF NANO-FIT, D/R, CLIP, VERTICAL POWER CONNECTOR																																																														
FUNCTIONAL SYMBOLS	FUNCTIONAL SYMBOLS	FUNCTIONAL SYMBOLS	FUNCTIONAL SYMBOLS	PRODUCT CUSTOMER DRAWING																																																																		
FUNCTIONAL SYMBOLS	FUNCTIONAL SYMBOLS	FUNCTIONAL SYMBOLS	FUNCTIONAL SYMBOLS					DOCUMENT NUMBER: 1053121000-SD																																																														
FUNCTIONAL SYMBOLS	FUNCTIONAL SYMBOLS	FUNCTIONAL SYMBOLS	FUNCTIONAL SYMBOLS	DOC TYPE: PSD																																																																		
FUNCTIONAL SYMBOLS	FUNCTIONAL SYMBOLS	FUNCTIONAL SYMBOLS	FUNCTIONAL SYMBOLS					DOC PART: 000																																																														
FUNCTIONAL SYMBOLS	FUNCTIONAL SYMBOLS	FUNCTIONAL SYMBOLS	FUNCTIONAL SYMBOLS	REVISION: B1																																																																		
FUNCTIONAL SYMBOLS	FUNCTIONAL SYMBOLS	FUNCTIONAL SYMBOLS	FUNCTIONAL SYMBOLS					SHEET NUMBER: 3 OF 5																																																														
GENERAL TOLERANCES (UNLESS SPECIFIED)		2022/02/24		2022/02/25																																																																		
ANGULAR TOL ± 3.0°		2022/02/25						2022/02/25																																																														
4 PLACES ±		2022/02/25		2022/02/25																																																																		
3 PLACES ± 0.1		2022/02/25						2022/02/25																																																														
2 PLACES ± 0.2		2022/02/25		2022/02/25																																																																		
1 PLACE ± 0.3		2022/02/25						2022/02/25																																																														
0 PLACES ±		2022/02/25		2022/02/25																																																																		
DRAFT WHERE APPLICABLE MUST REMAIN WITHIN DIMENSIONS		2022/02/25						2022/02/25																																																														
THIRD ANGLE PROJECTION		2022/02/25		2022/02/25																																																																		
DRAWING		2022/02/25						2022/02/25																																																														
A3-SIZE		2022/02/25		2022/02/25																																																																		
SERIES		2022/02/25						2022/02/25																																																														
105312		2022/02/25		2022/02/25																																																																		
MATERIAL NUMBER		2022/02/25						2022/02/25																																																														
CUSTOMER		2022/02/25		2022/02/25																																																																		
GENERAL MARKET		2022/02/25						2022/02/25																																																														
SHEET NUMBER		2022/02/25		2022/02/25																																																																		
3 OF 5		2022/02/25						2022/02/25																																																														

		4 CKT	6 CKT	8 CKT	10 CKT
F	BLACK				
E	NATURAL				
		12 CKT	14 CKT	16 CKT	
D	BLACK				
C	NATURAL				

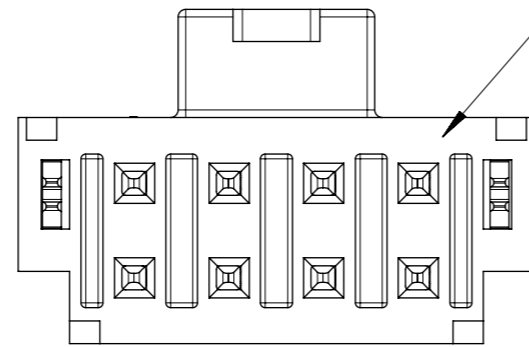
FUNCTIONAL SYMBOLS	THIS DRAWING CONTAINS INFORMATION THAT IS PROPRIETARY TO MOLEX ELECTRONIC TECHNOLOGIES, LLC AND SHOULD NOT BE USED WITHOUT WRITTEN PERMISSION		CURRENT REV DESC:		<b>molex</b>		
	SCALE	3:1					
GENERAL TOLERANCES (UNLESS SPECIFIED)	mm		EC NO: 697101		2022/02/24		
ANGULAR TOL	± 3.0°		DRWN: GLLI		2022/02/25		
4 PLACES	±		CHK'D: XQZHANG		2022/02/25		
3 PLACES	± 0.1		APPR: XQZHANG		2022/02/25		
2 PLACES	± 0.2		INITIAL REVISION:		DOCUMENT NUMBER		
1 PLACE	± 0.3		DRWN: GLLI		1053121000-SD		DOC TYPE
0 PLACES	±		APPR: YXZHENG		PSD		DOC PART
DRAFT WHERE APPLICABLE MUST REMAIN WITHIN DIMENSIONS	THIRD ANGLE PROJECTION		DRAWING		SERIES		REVISION
			A3-SIZE		105312		B1
	MATERIAL NUMBER		CUSTOMER		SHEET NUMBER		
	105312		GENERAL MARKET		4 OF 5		

NOTES FOR ALL PARTS

1> MATERIAL:  
 HOUSING: LCP, UL 94V-0.  
 TERMINAL: BRASS.  
 SOLDER CLIP: BRASS.

2> PLATING FINISHED:  
 TERMINAL:  
 CONTACT AREA: a. REFLOW MATTE TIN 1.5MICRONS MIN;  
 b. GOLD 0.38 MICRONS MIN;  
 c. GOLD 0.76 MICRONS MIN.  
 SOLDER AREA: MATTE TIN 1.5 MICRONS MIN, UNDER PLATING NICKEL 1.25 MICRONS MIN.  
 SOLDER CLIP: MATTE TIN 2.5 MICRONS MIN, UNDER PLATING NICKEL 1.25 MICRONS MIN.

3> PRODUCT SPECIFICATION: PS-105300-100.  
 4> PACKAGE: TAPE REEL, 1053121000-PK.  
 5> PRODUCT MATE WITH SERIES OF 105308(RECEPTACLE), 105300(CRIMP TERMINAL).  
 6> PARTS CONFORM TO CLASS 'B'REQUIREMENTS OF COSMETIC SPECIFICATION PS-45499-002.  
 7> DISCOLORATION IN THE BANDOLIER PIN CARRIER AREA OF THE PIN IS INHERENT TO THE PLATING PROCESS AND IS DUE TO THE MASKING DEFECT OF THE CARRIER, THIS DISCOLORATION IS IN A NON-FUNCTION AREA OF THE PIN AND WILL NOT AFFECT THE PERFORMANCE OF THE HEADER ASSEMBLY.



IF ANY NUMBER MARK APPEARS ON THIS SURFACE, PLEASE DISREGARD IT, IT IS NO ANY FUCTION AND NO ANY RELATION TO PIN NUMBER, IT IS JUST FOR MOLDING IDENDIFICATION.

FUNCTIONAL SYMBOLS	THIS DRAWING CONTAINS INFORMATION THAT IS PROPRIETARY TO MOLEX ELECTRONIC TECHNOLOGIES, LLC AND SHOULD NOT BE USED WITHOUT WRITTEN PERMISSION		CURRENT REV DESC:		<b>molex</b>			
	mm	1:1						
GENERAL TOLERANCES (UNLESS SPECIFIED)	GENERAL TOLERANCES (UNLESS SPECIFIED)		EC NO: 697101		HEADER OF NANO-FIT, D/R, CLIP, VERTICAL POWER CONNECTOR			
	ANGULAR TOL ± 3.0°		DRWN: GLLI 2022/02/24					
DIVISIONAL SYMBOLS	4 PLACES	±	CHK'D: XQZHANG 2022/02/25		PRODUCT CUSTOMER DRAWING			
	3 PLACES	±	APPR: XQZHANG 2022/02/25					
	2 PLACES	±	INITIAL REVISION:		DOCUMENT NUMBER	DOC TYPE	DOC PART	REVISION
	1 PLACE	±	DRWN: GLLI 2019/09/24		1053121000-SD	PSD	000	B1
0 PLACES	±	APPR: YXZHENG 2020/03/16		MATERIAL NUMBER	CUSTOMER	SHEET NUMBER		
DRAFT WHERE APPLICABLE MUST REMAIN WITHIN DIMENSIONS		THIRD ANGLE PROJECTION		DRAWING	SERIES	GENERAL MARKET		
				A3-SIZE	105312	5 OF 5		