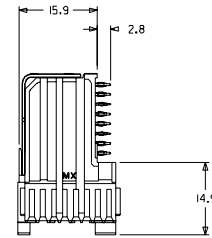
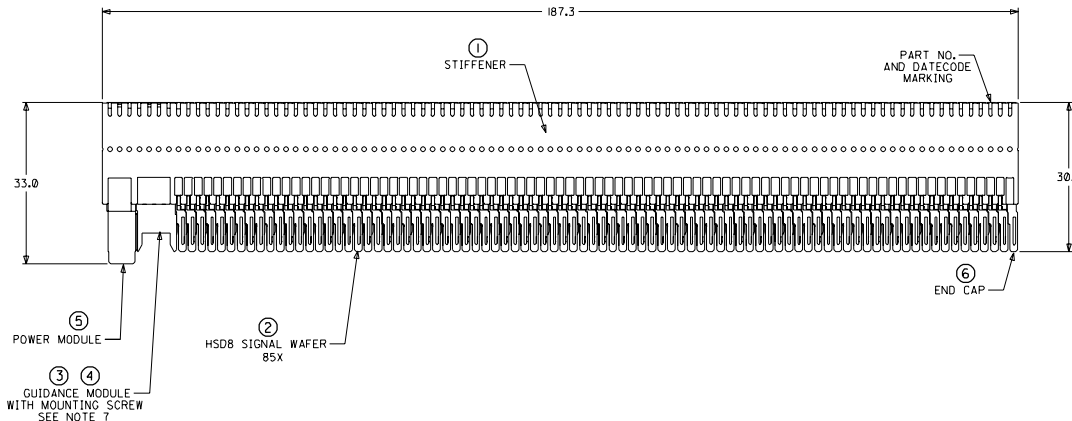
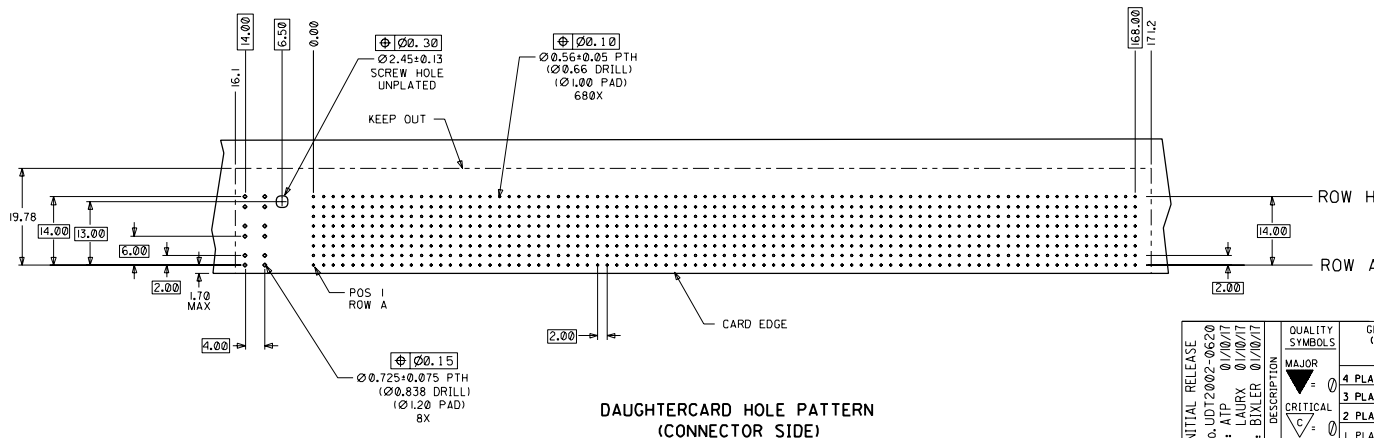
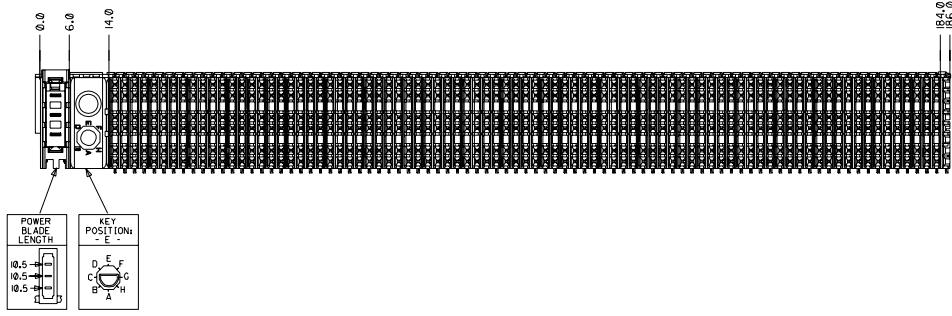


CUSTOMER: PROCKET NETWORKS



NOTES: (UNLESS OTHERWISE SPECIFIED)

- MATERIALS: HOUSING - LIQUID CRYSTAL POLYMER (LCP), GLASS-FILLED, UL94V-0, BLACK. TERMINALS - HIGH PERFORMANCE COPPER ALLOY. STIFFENER - STAINLESS STEEL.
- FINISH: SELECTIVE GOLD (Au) IN CONTACT AREA, 0.00076mm MINIMUM THICKNESS; SELECTIVE TIN/LEAD (Sn/Pb) ON PCB TAILS, NICKEL (Ni) OVERALL.
- REFER TO MOLEX PRODUCT SPECIFICATION PS-74031-999 FOR PERFORMANCE SPECIFICATIONS.
- REFER TO MOLEX DOCUMENT SD-74681-002 FOR ADDITIONAL DETAIL ON THE HSD8 SIGNAL WAFER.
- REFER TO MOLEX DOCUMENT SD-74037-006 FOR ADDITIONAL DETAIL ON THE GUIDANCE MODULE.
- REFER TO MOLEX DOCUMENT SD-74026-002 FOR ADDITIONAL DETAIL ON THE POWER MODULE.
- MOUNTING SCREWS WILL BE BAGGED WITH EACH CONNECTOR.
- PARTS ARE PACKAGED IN TUBES PER PK-70873-5041.



ITEM	PART NUMBER	DESCRIPTION	QTY
1	74046-0187	STIFFENER	1
2	74681-0001	HSD8 WAFER	85
3	74037-0005	POLARIZING/GUIDE MODULE	1
4	73726-0000	GUIDE MODULE MNTG SCREW	1
5	74026-8333	POWER MODULE	1
6	74038-1001	END CAP	1

INITIAL RELEASE EC NO. UDT2002-0620 DRAWN: ATP 01/10/17 CHECK: LAURX 01/10/17 APPR: BIXLER 01/10/17	QUALITY SYMBOLS MAJOR CRITICAL	GENERAL TOLERANCES (UNLESS SPECIFIED) 4 PLACES ± 0.15 mm 3 PLACES ± 0.20 mm 2 PLACES ± 0.30 mm 1 PLACE ± 0.40 mm	SCALE: 2:1 DESIGN UNITS: mm <input checked="" type="checkbox"/> INCH <input type="checkbox"/> THIRD ANGLE PROJECTION <input type="checkbox"/>	DIMENSIONS: mm <input checked="" type="checkbox"/> INCH <input type="checkbox"/> SHT: 1 REV: 1 REVISION ON CAD ONLY
		DRAWN BY & DATE: ATP 01/10/17 CHECKED BY & DATE: LAURX 01/10/17 APPROVED BY & DATE: BIXLER 01/10/17 ANGULAR: $\pm 2^\circ$	TITLE: 8 ROW HSD DAUGHTERCARD ASSEMBLY SALES DRAWING MOLEX INCORPORATED	
DRAFT WHERE APPLICABLE MUST REMAIN WITHIN DIMENSIONS		THIS DRAWING CONTAINS INFORMATION THAT IS PROPRIETARY TO MOLEX INCORPORATED AND SHOULD NOT BE USED WITHOUT WRITTEN PERMISSION.		