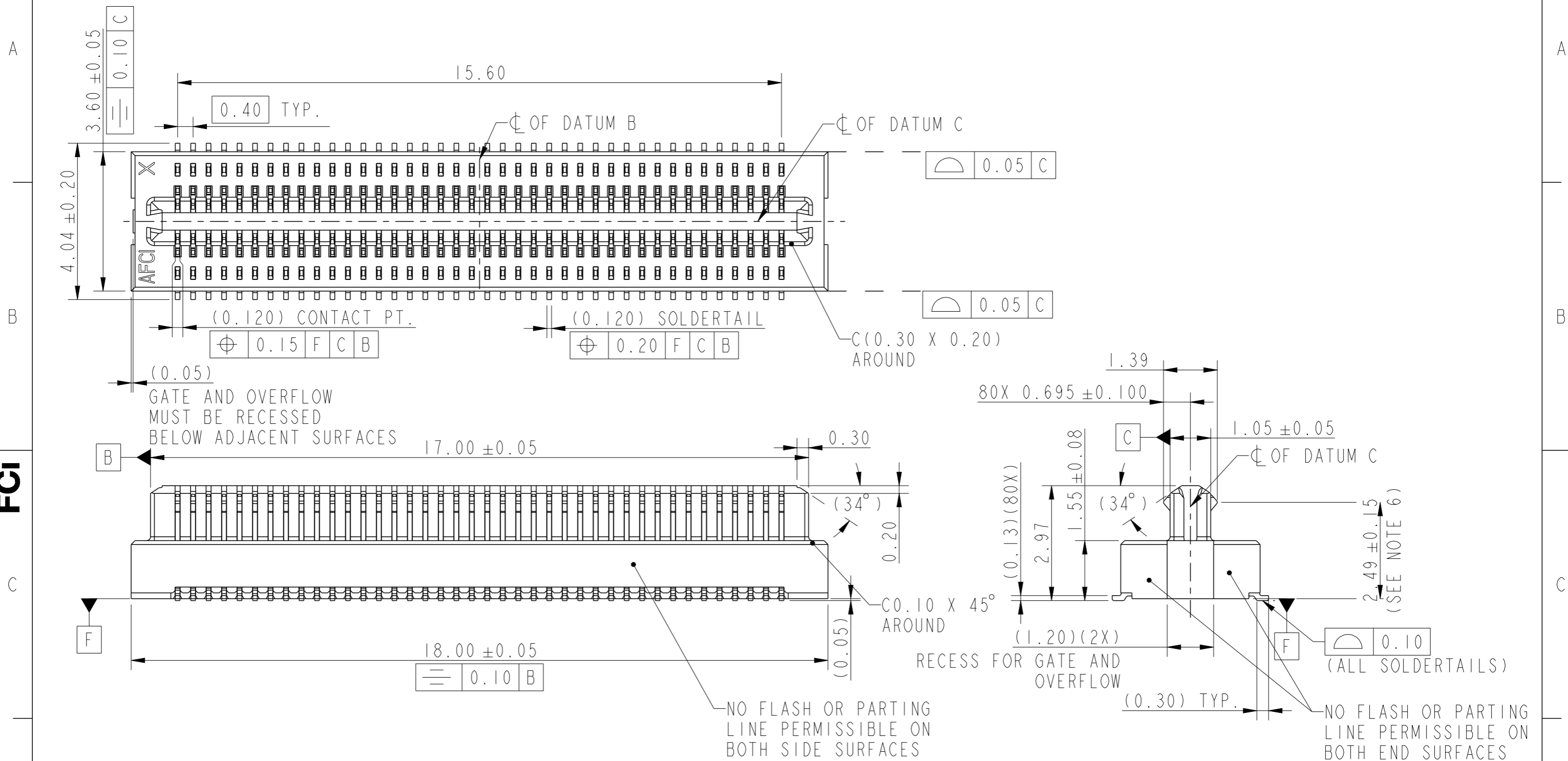


PRODUCT NO.	REMARK
10161488-001C-TRLF	80 POSITION



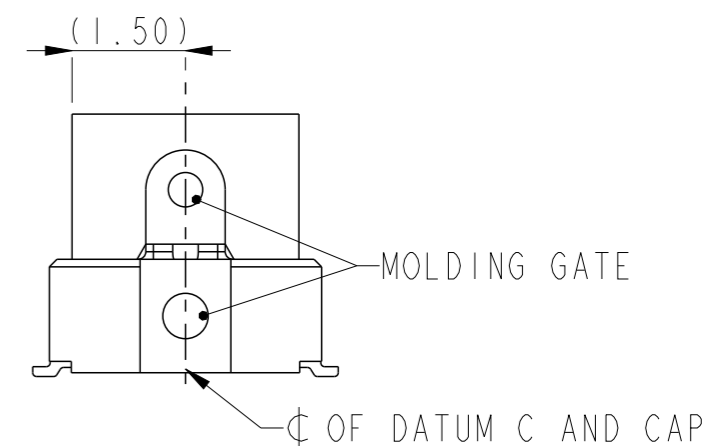
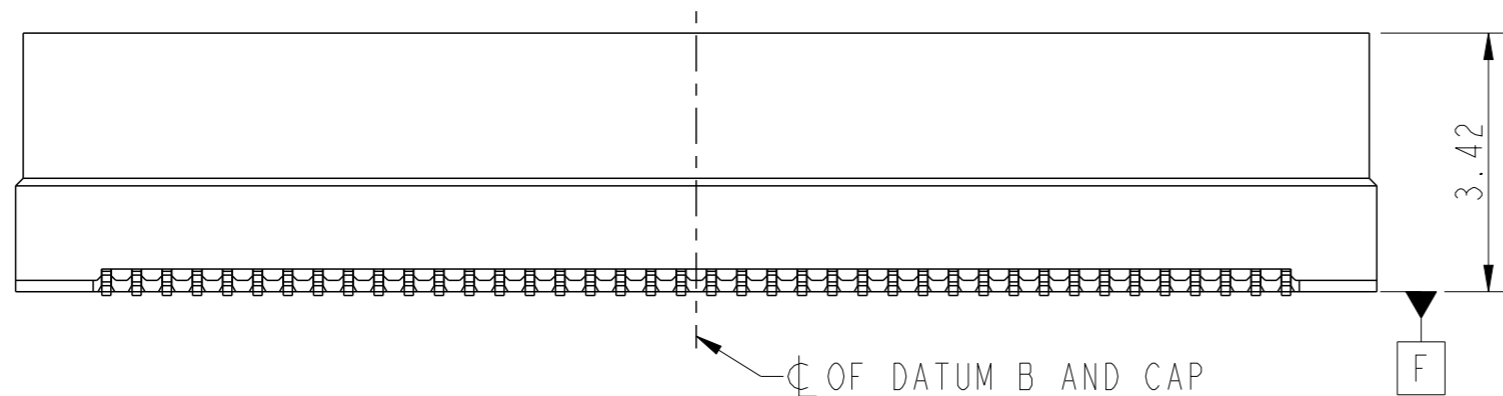
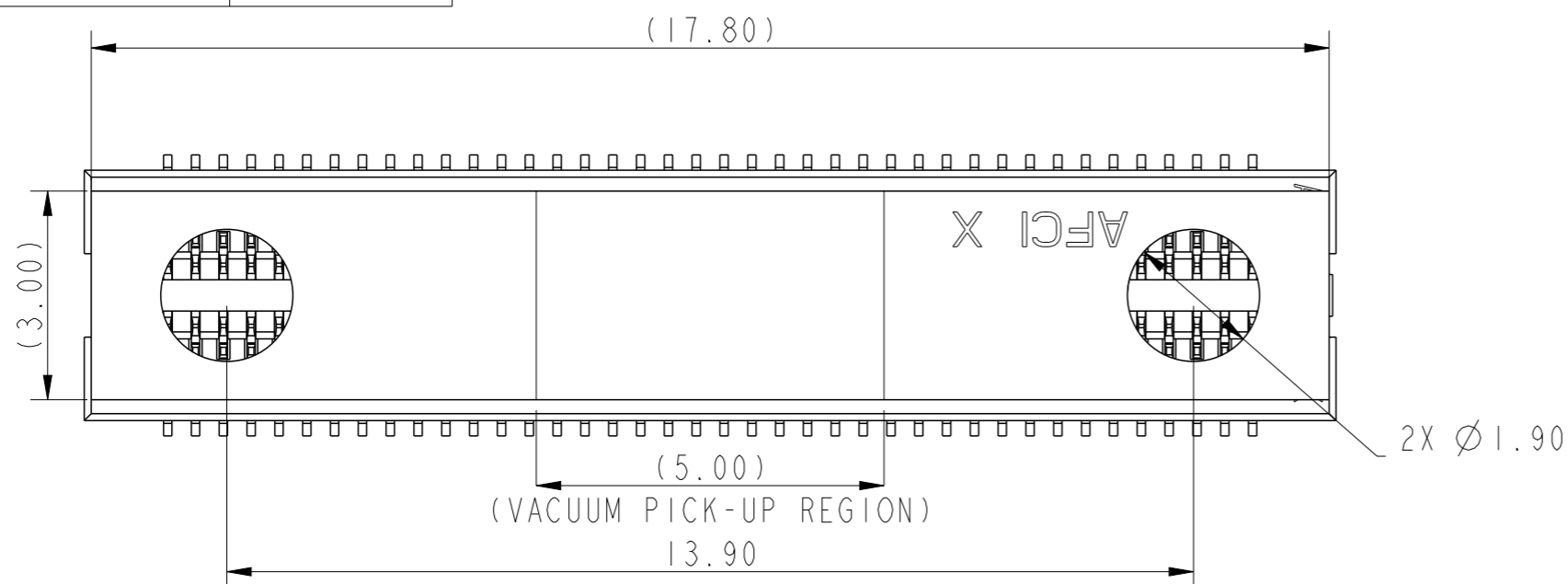
Amphenol
FCi

© 2020 Amphenol Corporation

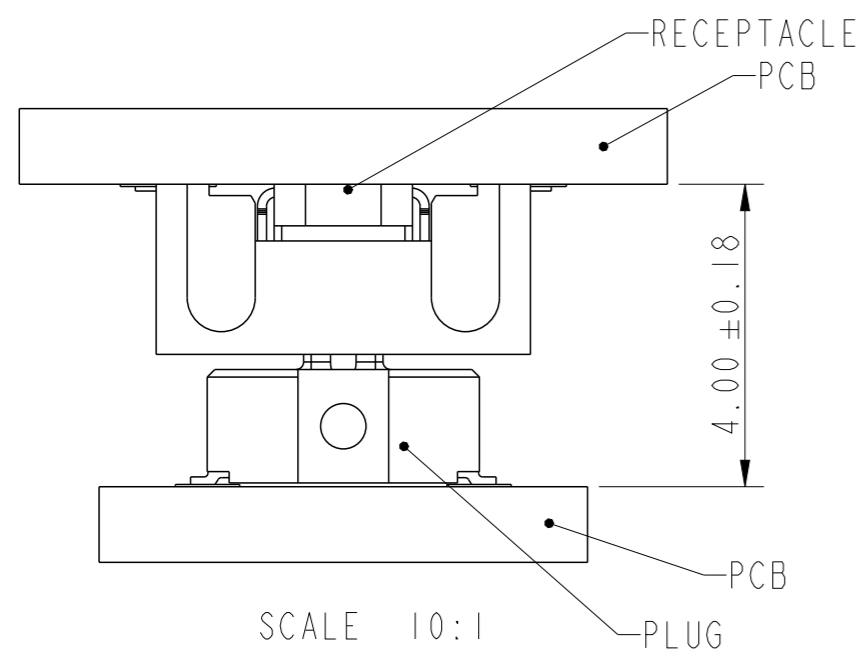
spec ref	ASME Y14.5	dr	Jeffrey Lim	2021/02/23	projection	MM	size	A3	scale	10:1							
tolerance std	TOLERANCES UNLESS OTHERWISE SPECIFIED	eng	Jeffrey Lim	2021/02/25			ecn no	-	rel level	Released							
surface	<table border="1"> <tr> <td>linear</td> <td>0.X</td> <td>± -</td> </tr> <tr> <td></td> <td>0.XX</td> <td>± 0.15</td> </tr> <tr> <td></td> <td>0.XXX</td> <td>± -</td> </tr> <tr> <td>angular</td> <td>0°</td> <td>± 3°</td> </tr> </table>	linear	0.X	± -								0.XX	± 0.15		0.XXX	± -	angular
linear	0.X	± -															
	0.XX	± 0.15															
	0.XXX	± -															
angular	0°	± 3°															
		appr	Koon-Poh Tay	2021/02/25	0.4PITCH 80P BTB PLUG		dwg no	10161488		rev	A						
		amphenol-icc.com		cat. no.	-		Product - Customer Drw		sheet 1 of 3								

Creo File:ELX-WC-A3C.REV F.2020-12-21

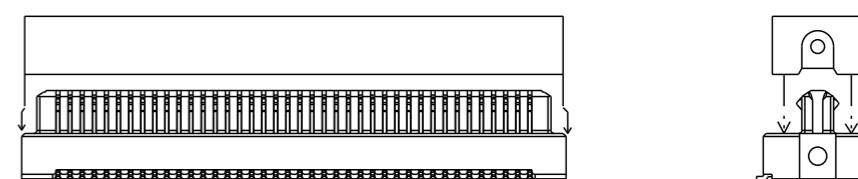
PRODUCT NO.	PACKAGING
10161488-001C-TRLF	TAPE & REEL



SCALE 10:1
WITH CAP ATTACHED



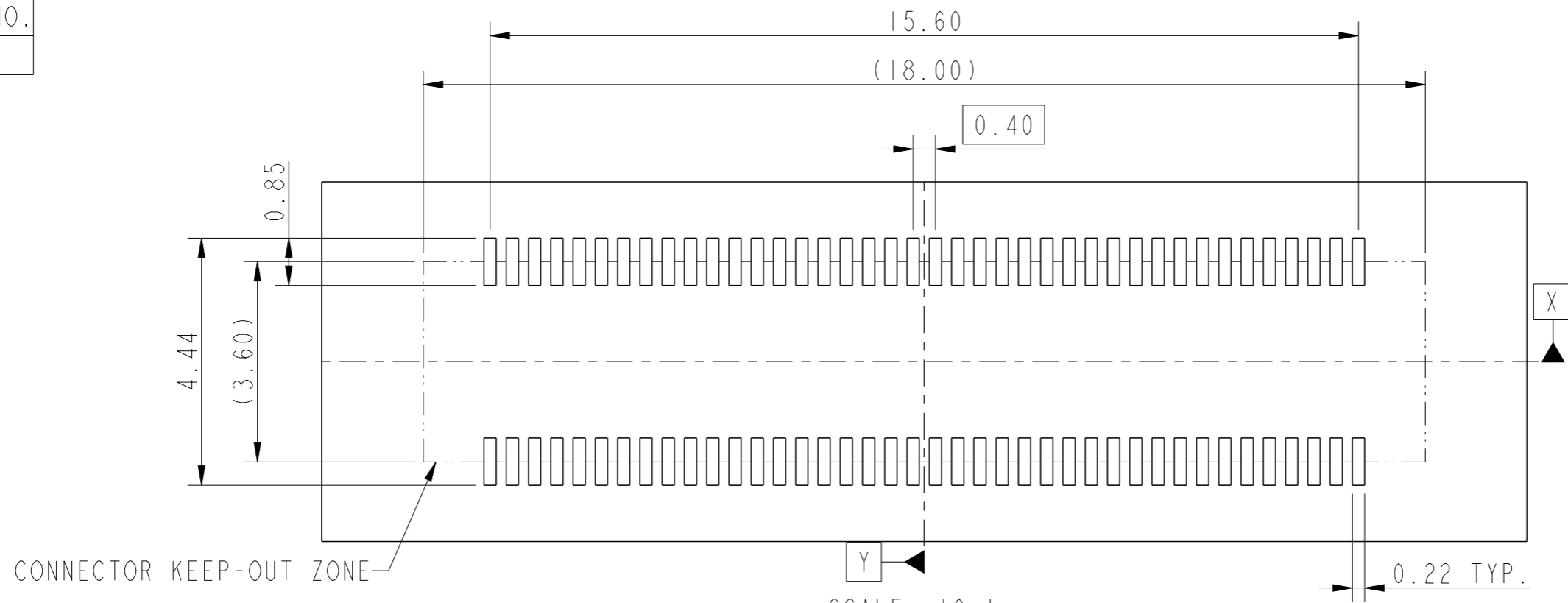
SCALE 10:1



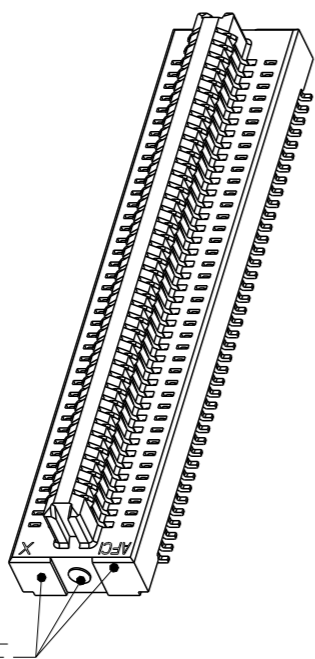
CAPPING DIRECTION

spec ref	ASME Y14.5	dr	Jeffrey Lim	2021/02/23	projection	MM	size	A3	scale	3:1									
tolerance std	TOLERANCES UNLESS OTHERWISE SPECIFIED	eng	Jeffrey Lim	2021/02/25			ecn no	-	rel level	Released									
surface	<table border="1"> <tr> <td>linear</td> <td>0.X</td> <td>± -</td> </tr> <tr> <td></td> <td>0.XX</td> <td>± 0.15</td> </tr> <tr> <td></td> <td>0.XXX</td> <td>± -</td> </tr> <tr> <td>angular</td> <td>0°</td> <td>± 3°</td> </tr> </table>	linear	0.X	± -				0.XX	± 0.15		0.XXX	± -	angular	0°	± 3°	chr	-	product family	-
linear	0.X	± -																	
	0.XX	± 0.15																	
	0.XXX	± -																	
angular	0°	± 3°																	
apppr	Koon-Poh Tay	2021/02/25	Amphenol FCI 0.4PITCH 80P BTB PLUG		cat. no.	-	Product - Customer Drw	dwg no 10161488	rev	A									
amphenol-icc.com																			

PRODUCT NO.
SEE TABLE



SCALE 10:1
RECOMMENDED PCB LAYOUT



GATE AND OVERFLOW MUST BE RECESSED BELOW ADJACENT SURFACES
SCALE 5:1

NOTES:

- MATERIAL:
A) HOUSING & CAP: HIGH TEMPERATURE THERMOPLASTIC, COLOR: NATURAL
B) TERMINAL: COPPER ALLOY
- FINISH:
TERMINAL: 0.2um MIN. Au PLATING(CONTACT AREA),
0.05um MIN. Au PLATING(SOLDERTAIL AREA) OVER
1.27um MIN. Ni UNDERPLATE OVERALL
- WITH RECEPTACLE P/N. 10161487, THE MATED PAIR SHALL ALLOW
X/Y +/-0.20MM DISPLACEMENT OFFSET
- PRODUCT SPEC.: GS-12-1489
- PACKAGING SPEC.: GS-14-2631(TAPE & REEL)
- DIMENSION TO BE MEASURED AT FOUR CORNER END CONTACTS
- APPLICATION SPEC.: GS-20-0662
- THIS PRODUCT MEETS EUROPEAN UNION DIRECTIVES AND OTHER COUNTRY REGULATIONS AS DESCRIBED IN GS-47-0004
- THE HOUSING WILL WITHSTAND EXPOSURE TO 260°C PEAK TEMPERATURE FOR 10 SECONDS IN A CONVECTION, INFRA-RED OR VAPOR PHASE REFLOW OVEN
- A SYMBOL WILL BE NEXT TO ANY DIMENSION, VIEW OR NOTE WHICH HAS BEEN MODIFIED WITH THE CURRENT DRAWING REVISION

spec ref	ASME Y14.5	dr	Jeffrey Lim	2021/02/23	projection		size	A3	scale	10:1
tolerance std	TOLERANCES UNLESS OTHERWISE SPECIFIED	eng	Jeffrey Lim	2021/02/25			ecn no	-		
		chr	-	-			rel level	Released		
		appr	Koon-Poh Tay	2021/02/25	product family	-				
surface	linear	0.X	± -	Amphenol FCI	0.4PITCH 80P BTB PLUG	dwg no	10161488	rev	A	cat. no.
		0.XX	±0.15							
		0.XXX	± -							
	angular	0°	±3°	amphenol-icc.com						