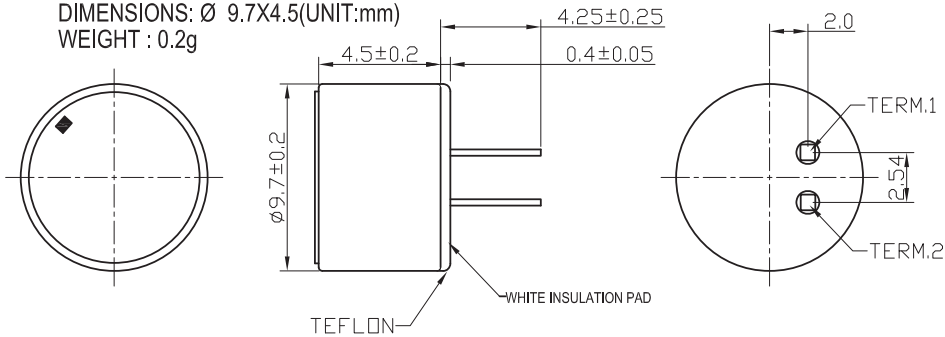


1 CONSTRUCTION

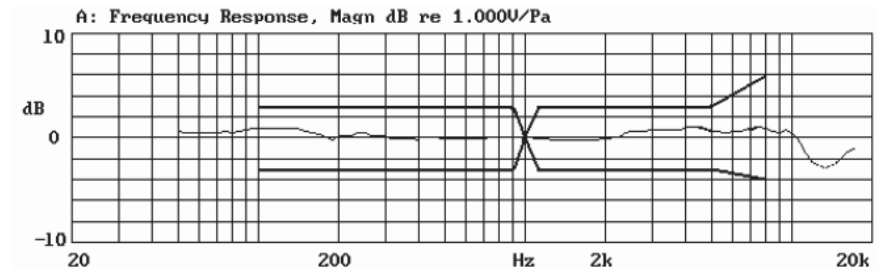
DIMENSIONS: Ø 9.7X4.5(UNIT:mm)
WEIGHT : 0.2g



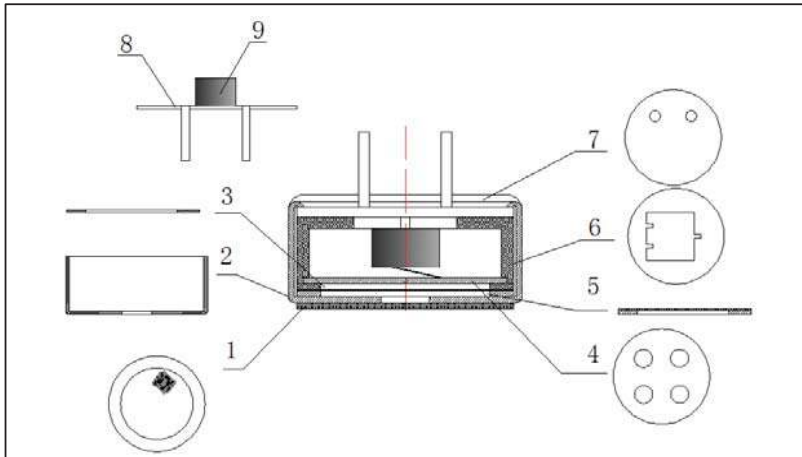
1. Electrical Specifications:

1.1	Sensitivity Range	-36±3dB RL=2.2KΩ Vs=4.5V (1KHz 0dB=1V/Pa)
1.2	Impedance	Max. 2.2KΩ 1KHz (RL=2.2KΩ)
1.3	Frequency	20-16000 Hz
1.4	Current Consumption	Max.0.5mA
1.5	Operation Voltage Range	1.0V-10V
1.6	Max. Sound Pressure Level	115dB S.P.L
1.7	S/N Ratio	More than 58dB
1.8	Sensitivity Reduction	3.0V-2.5V Sensitivity Variation less than 3dB
1.9	Environmental Protection Regulation	ROHS

1.10 Typical Frequency Response Curve

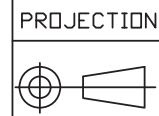


Frequency(Hz)	100	200	900	1000	1200	2000	4000	5000	8000
Upper Limit(dB)	3	3	3	0	3	3	3	3	6
Lower Limit(dB)	-3	-3	-3	0	-3	-3	-3	-3	-4



No.	Name	Material	Remark
9	FET		K596
8	P.C.B	Glass fiber	
7	White Insulation Pad		TEFLON
6	cavity	ABS	
5	Diaphragm	Cu PPS	
4	electrets	Cu H65	
3	Spacer	Polyester film	
2	Case	AL	
1	Felt	Cotton decron textile	

NOTE:ALL DIMS ARE IN mm



Research Develop Innovate
RDI, Inc. 400 Columbus Avenue Valhalla, NY 10595

SCALE N/A TITLE ELECTRET CONDENSER MICROPHONE-ROHS COMPLIANT

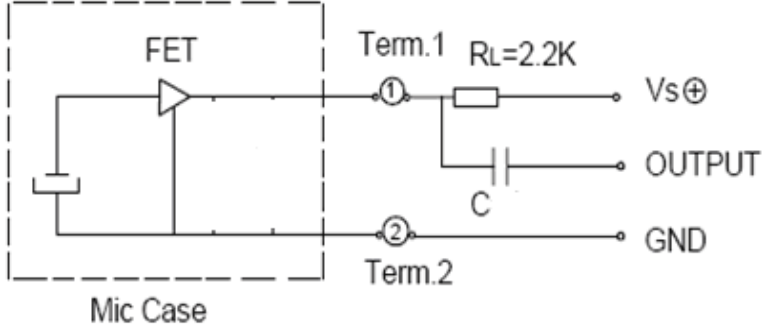
TOLERANCE EXCEPT AS NOTED DR. Jin DATE 03/01/06 REF. P/N: REM-9745p-36-NL 1 OF 2

DEC. INCHES N/A CK. JY PRE-MI DRAWING NO. 2740 SIZE F REV. E

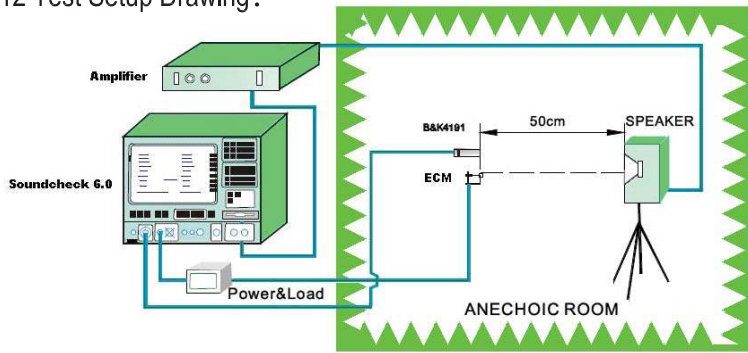
DEC. MILLIMETERS N/A THIS DOCUMENT IS OWNED BY, AND THE INFORMATION CONTAINED IN IT IS PROPRIETARY TO, RDI, BY RECEIPT HEREOF THE HOLDER AGREES NOT TO USE THE INFORMATION AND NOT TO DISCLOSE IT TO ANY THIRD PARTY, NOR REPRODUCE THIS DOCUMENT WITHOUT THE WRITTEN CONSENT OF RDI, AND AGREES TO RETURN THIS DOCUMENT FORTHWITH UPON REQUEST.

ECN#	DATE	SYM	REVISION RECORD	AUTH	BY
13-017	04/19/13	E	CHANGED THE DRAWING VIEW AND SPECIFICATIONS	VF	TL
08-116	03/28/08	D	CHANGED THE DRAWING TO NEW PRINT	CP	JY
07-438	09/18/07	C	ADDED THE PCB DRAWING & REVISIED Vs=DC 3.0V TO Vs=DC 4.5V	CP	JY
07-381	08/08/07	B	CHANGED THE DRAWING TO NEW PRINT	HYH	JY

1.11 Schematic Diagram:



1.12 Test Setup Drawing:



4. PACKAGING

	DRAWING	QTY (PCS)	SIZE(mm)	MARKING
INNER BOX		100	100X100X14.5	AS CUSTOMER'S P.O
OUTER BOX		6000 100x15x4	210X 210X 280	AS CUSTOMER'S P.O

2. Reliability Tests: After any following tests, the sensitivity of the microphone unit shall not change more than $\pm 3\text{dB}$ from initial value, and shall keep their initial operation and appearance.

2.1	Hi-Temp. Test	The microphone unit must be subjected to $+70^\circ\text{C}$ for 200 Hours, and expose to room temperature for 3 Hours.
2.2	Low-Temp. Test	The microphone unit must be subjected to -25°C for 200 Hours, and expose to room temperature for 3 Hours.
2.3	Humi.&Heat Test	The microphone unit must be subjected to $+40^\circ\text{C}$, 93% RH for 200 Hours, and expose to room temp for 3 Hours.
2.4	Thermal Shocking Test	The microphone unit must be subjected to a environment from -25°C for 30 minutes to the end of $+70^\circ\text{C}$ for 30 minutes, which shall be repeated 5 cycles and exposed to room temperature for 3 hours.
2.5	Vibration Test	The microphone unit must be subjected to a procedure that after vibrating for two hours from each of the two directions with a frequency of 10-55Hz and a 1.52mm-high amplitude.
2.6	Dropping Test	The microphone unit must be subjected to a procedure that after dropping to a slippery marble floor for 5 times from a 1-meter-high without package.

3. Environmental Condition:

3.1	Storage condition	$-25^\circ\text{C} \sim +70^\circ\text{C}$ R.H. less than 90%
3.2	Operation condition	$-20^\circ\text{C} \sim +60^\circ\text{C}$ R.H. less than 90%
3.3	Arbitration condition	Temperature : $20^\circ\text{C} \pm 1^\circ\text{C}$ Relative humidity: 63%~67% Air pressure : 86~106Kpa

5. Output Inspection standard

Output inspection standard is excuted according to 《GB/T2828.1-2003》

NOTE:ALL DIMS ARE IN mm

PROJECTION			Research Develop Innovate
SCALE	N/A	RDI, Inc. 400 Columbus Avenue Valhalla, NY 10595	
TOLERANCE EXCEPT AS NOTED	DR. Jin	DATE 03/01/06	REF. P/N: REM-9745p-36-NL
DEC. INCHES	CK. JY	PRE-MI	DRAWING NO. 2740
DEC. MILLIMETERS			SIZE F
ANG.	N/A	THIS DOCUMENT IS OWNED BY, AND THE INFORMATION CONTAINED IN IT IS PROPRIETARY TO, RDI, BY RECEIPT HEREOF THE HOLDER AGREES NOT TO USE THE INFORMATION AND NOT TO DISCLOSE IT TO ANY THIRD PARTY, NOR REPRODUCE THIS DOCUMENT WITHOUT THE WRITTEN CONSENT OF RDI, AND AGREES TO RETURN THIS DOCUMENT FORTHWITH UPON REQUEST.	

ECN#	DATE	SYM	REVISION RECORD	AUTH	BY
13-017	04/19/13	E	CHANGED THE DRAWING VIEW AND SPECIFICATIONS	VF	TL
08-116	03/28/08	D	CHANGED THE DRAWING TO NEW PRINT	CP	JY
07-438	09/18/07	C	ADDED THE PCB DRAWING & REVISIED $V_s=DC 3.0V$ TO $V_s=DC 4.5V$	CP	JY
07-381	08/08/07	B	CHANGED THE DRAWING TO NEW PRINT	HYH	JY