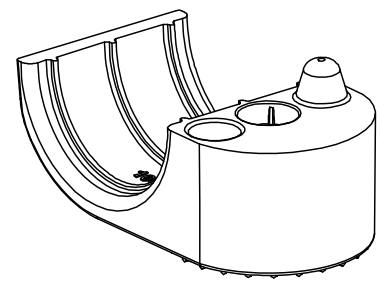
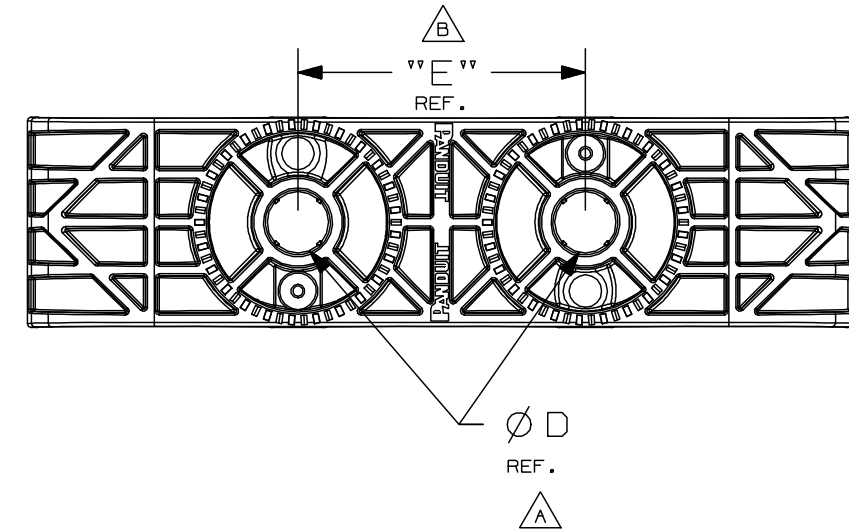
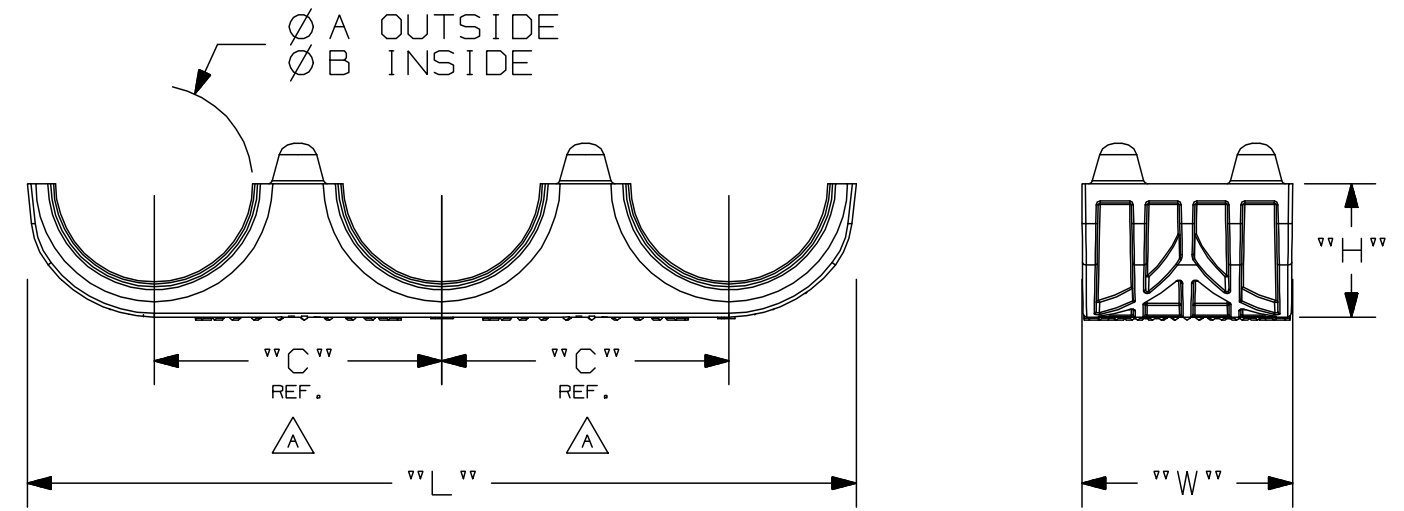


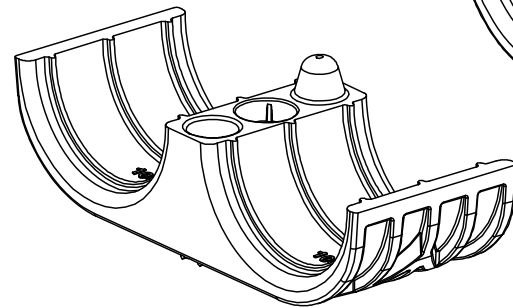
THIS COPY IS PROVIDED ON A RESTRICTED BASIS AND IS NOT TO BE USED IN ANY WAY DETRIMENTAL TO THE INTERESTS OF PANDUIT CORP.

PART NUMBER	"L"	"W"	"H"	ØA	ØB	C REF.	ØD REF.	E REF.	WEIGHT grams/100pcs
CLC100X3S8**	4.3 [110]	1.1 [28]	0.7 [18]	1.11 [28.2]	1.03 [26.1]	1.5 [38]	0.32 [8]	1.5 (38)	1,748
CLC100X2S8**	2.8 [72]							N/A	1,071
CLC100X1S8**	1.9 [50]			N/A	896				
CLC88X3S8**	4.3 [110]			1.05 [26.7]	0.93 [23.7]			1.5 (38)	1,916
CLC88X2S8**	2.8 [72]							N/A	1,183
CLC88X1S8**	1.9 [50]			N/A	953				
CLC75X3S8**	4.3 [110]			0.94 [23.8]	0.83 [21.2]			1.5 (38)	2,114
CLC75X2S8**	2.8 [72]							N/A	1,315
CLC75X1S8**	1.9 [50]			N/A	1,018				
CLC62X3S8**	4.3 [110]			0.82 [20.7]	0.70 [17.7]			1.5 (38)	2,307
CLC62X2S8**	2.8 [72]							N/A	1,443
CLC62X1S8**	1.9 [50]			N/A	1,083				

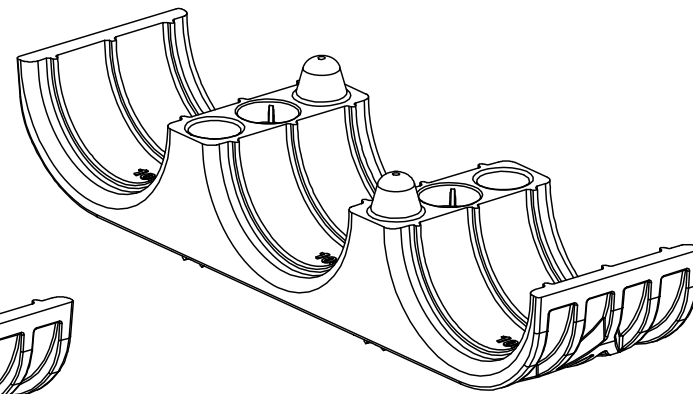
- NOTES:
- MATERIAL: PA6.6 13% GF HEAT STABLE PER ASTM D4066, BLACK IN COLOR
 - FINISH: PLAIN
 - CONTINUOUS OPERATING TEMPERATURE: -40°F TO 275°F
 - QUANTITY OF ONE (1) PART IS AS SHOWN. QUANTITY OF TWO (2) PARTS NEEDED FOR A COMPLETE CLAMP.



CLC**X1S8**



CLC**X2S8**



CLC**X3S8**

REV	DATE	BY	CHK	APR	DESCRIPTION	ECN
03	3/3/22	DJSL	DAEI	ALP	C. UPDATED PART WEIGHTS	1004880/03
02	2/2/22	DJSL	DAEI	ALP	B. ADDED "E" DIMENSION	1004880/02
01	8/2/21	DJSL	DAEI	ALP	A. UPDATED DIMENSION AS REFERENCE	1004880/01
00	2/26/21	DJSL	LAH	ALP	DRAWING RELEASED	1004880/00

TITLE				CORRIGATED LOOM CLAMP			
ITEM REVISION NAME				CUSTOMER DRAWING			
DATASET FILE NAME				00875EAA/03			
UNLESS OTHERWISE SPECIFIED, DIMENSIONAL TOLERANCES ARE: IN [mm]							
.x ± .1 [2.54] .xxx ± .005 [.127] .xx ± .01 [.25] ANGLES ± 1°							
DRAWING NUMBER:				00875EAA_DC			
DRWN BY	DATE	CHK	SCALE	SHT 1 OF 1		SIZE	
DJSL	2/26/21	LAH	FULL			B	

NXGLOBAL_BSIZE