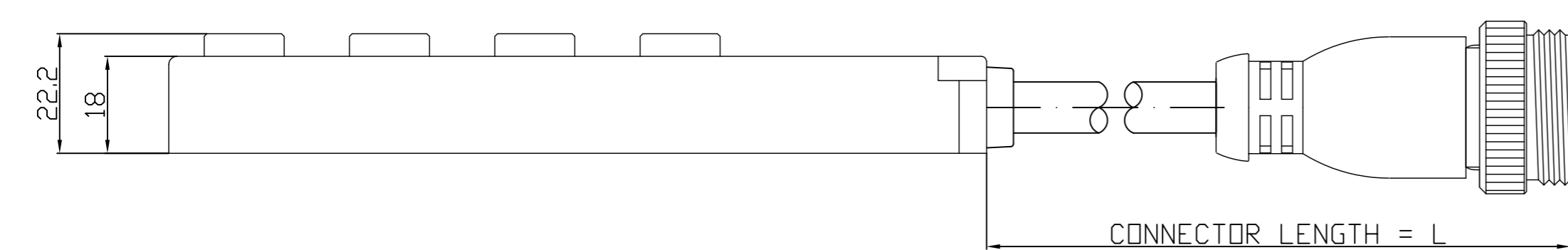


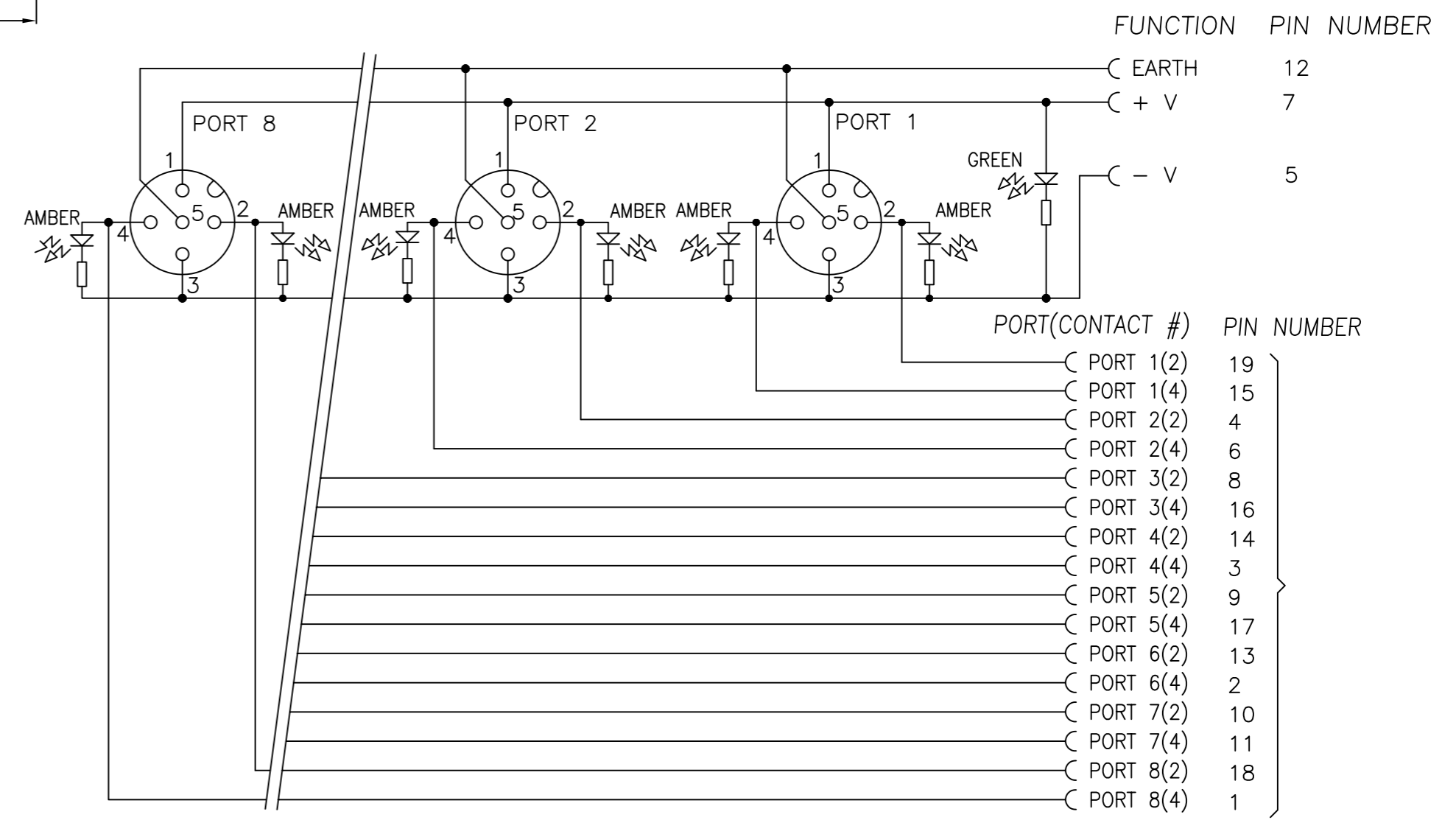
NOTE
FACE VIEW ON
END RECEPTACLE



MATERIAL NUMBER	OLD PART NUMBER	FINISHED LENGTH
1201140096	BTY812P-FBP-003	0.3M ± 10
1201140097	BTY812P-FBP-05	5.0M ± 25
1201140098	BTY812P-FBP-10	10.0M ± 30

VOLTAGE RATING	10-30 VDC
AMPERAGE RATING PER PORT	4 AMPS
PROTECTION	IP67
OPERATING TEMPERATURE	-5°C TO 90°C
UL CERTIFICATIONS	UL RECOGNIZED, FILE NO. E46237
CSA CERTIFICATIONS	CSA CERTIFIED, FILE NO. LR6837

ITEM	COMPONENT	MATERIAL	FINISH
1	CONTACT SOCKET	COPPER ALLOY	GOLD OVER NICKEL
2	O-RING	VITON	RED
3	RECEPTACLE SHELL	BRASS	NICKEL PLATED
4	HOUSING	PBT	YELLOW
5	LABEL	ABS	WHITE
6	LENS	NYLON	CLEAR
7	CABLE	PUR	-



PORT (CONTACT #)	PIN NUMBER
PORT 1(2)	19
PORT 1(4)	15
PORT 2(2)	4
PORT 2(4)	6
PORT 3(2)	8
PORT 3(4)	16
PORT 4(2)	14
PORT 4(4)	3
PORT 5(2)	9
PORT 5(4)	17
PORT 6(2)	13
PORT 6(4)	2
PORT 7(2)	10
PORT 7(4)	11
PORT 8(2)	18
PORT 8(4)	1

DESCRIPTION EC NO: WEU2010-0451 DRWN: LSTEMMLE 2010/03/22 CHKD: NSTAUDIG APPR: FPACHER 2010/03/23	QUALITY SYMBOLS ▽ = 0 ◻ = 0	GENERAL TOLERANCES (UNLESS SPECIFIED) <table border="1"> <thead> <tr> <th></th> <th>mm</th> <th>INCH</th> </tr> </thead> <tbody> <tr> <td>4 PLACES</td> <td>±---</td> <td>±---</td> </tr> <tr> <td>3 PLACES</td> <td>±---</td> <td>±---</td> </tr> <tr> <td>2 PLACES</td> <td>±---</td> <td>±.01</td> </tr> <tr> <td>1 PLACE</td> <td>±0.3</td> <td>±---</td> </tr> </tbody> </table>		mm	INCH	4 PLACES	±---	±---	3 PLACES	±---	±---	2 PLACES	±---	±.01	1 PLACE	±0.3	±---	DIMENSION STYLE MM ONLY DRAWN BY: LSTEMMLE DATE: 2010/03/22 CHECKED BY: FPACHER DATE: 2010/03/22 APPROVED BY: FPACHER DATE: 2010/03/23 MATERIAL NO.	SCALE: 1:1 DESIGN UNITS: METRIC THIRD ANGLE PROJECTION	MICRO-CHANGE MPIS 8 PORT PNP TWIN PORT 5P 19P MM MOULDET CONNECTOR MOLEX INCORPORATED SD-120114-089 SHEET NO. 1 OF 1
		mm	INCH																	
	4 PLACES	±---	±---																	
	3 PLACES	±---	±---																	
2 PLACES	±---	±.01																		
1 PLACE	±0.3	±---																		
DRAFT WHERE APPLICABLE MUST REMAIN WITHIN DIMENSIONS		SEE TABLE	THIS DRAWING CONTAINS INFORMATION THAT IS PROPRIETARY TO MOLEX INCORPORATED AND SHOULD NOT BE USED WITHOUT WRITTEN PERMISSION																	
1	REV	SIZE A2																		