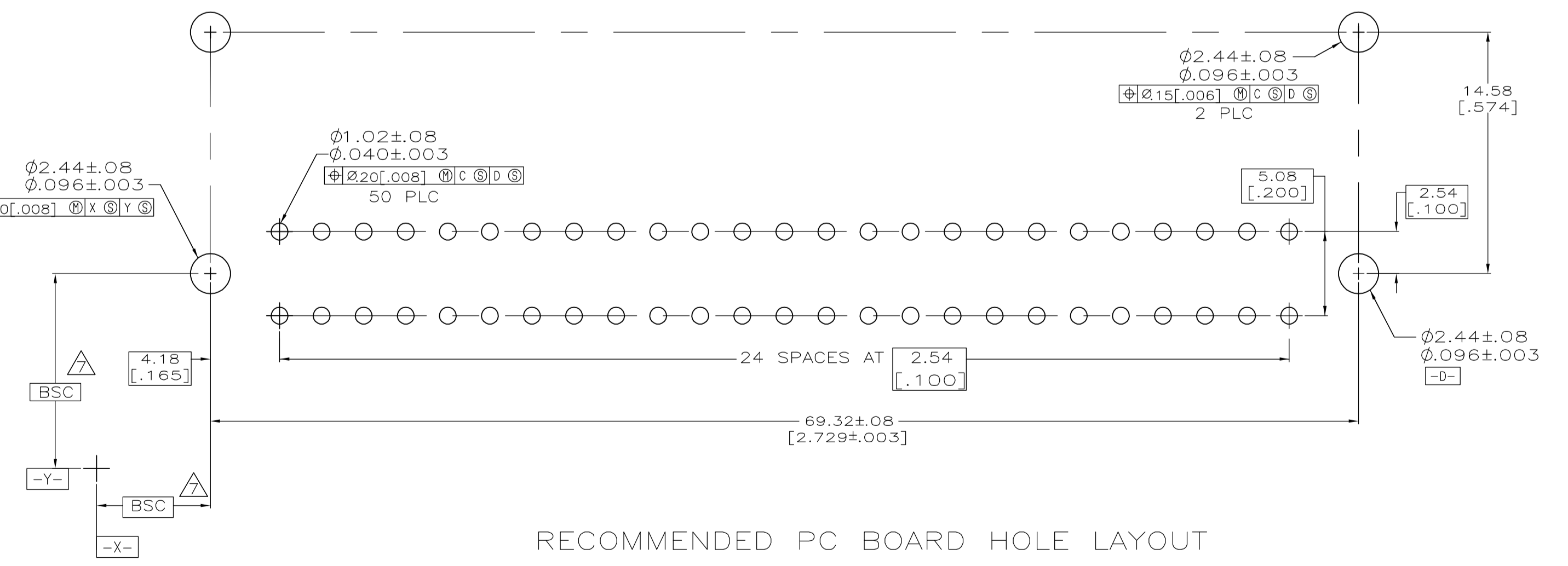
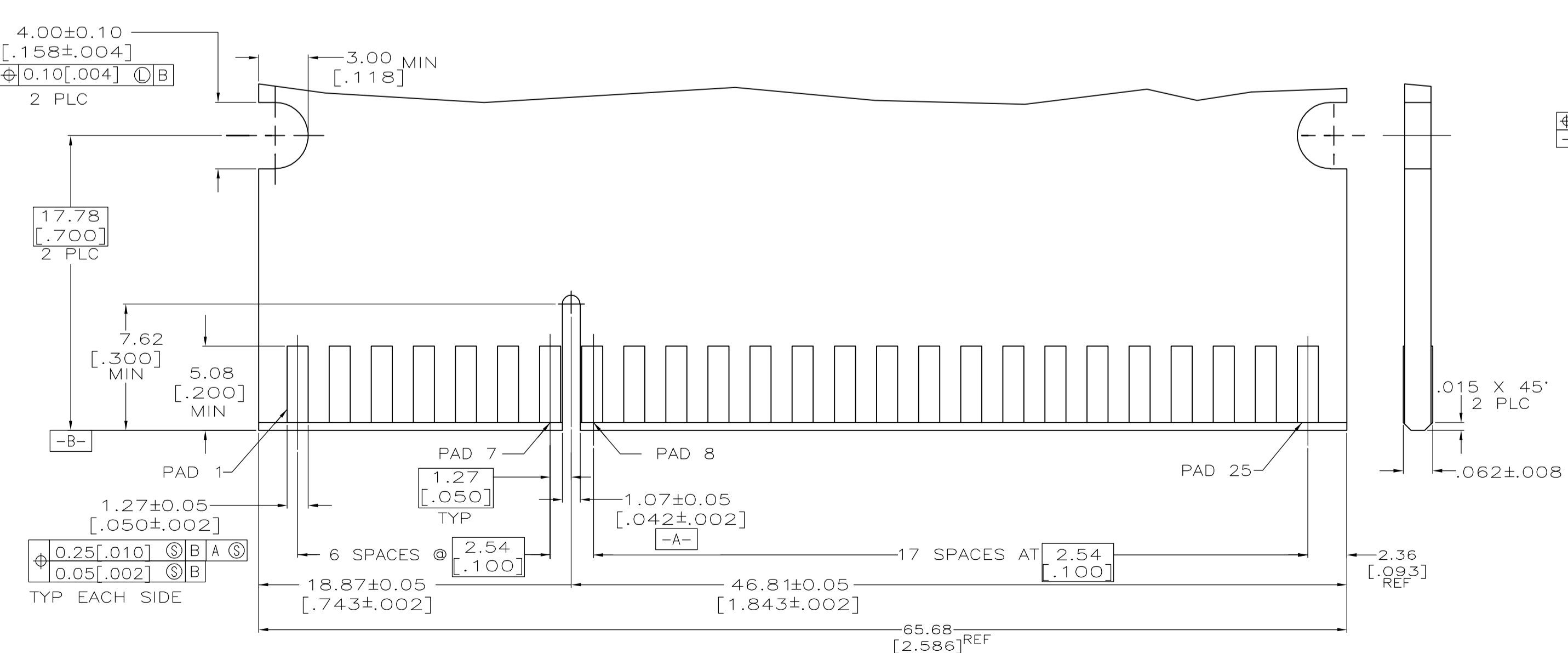
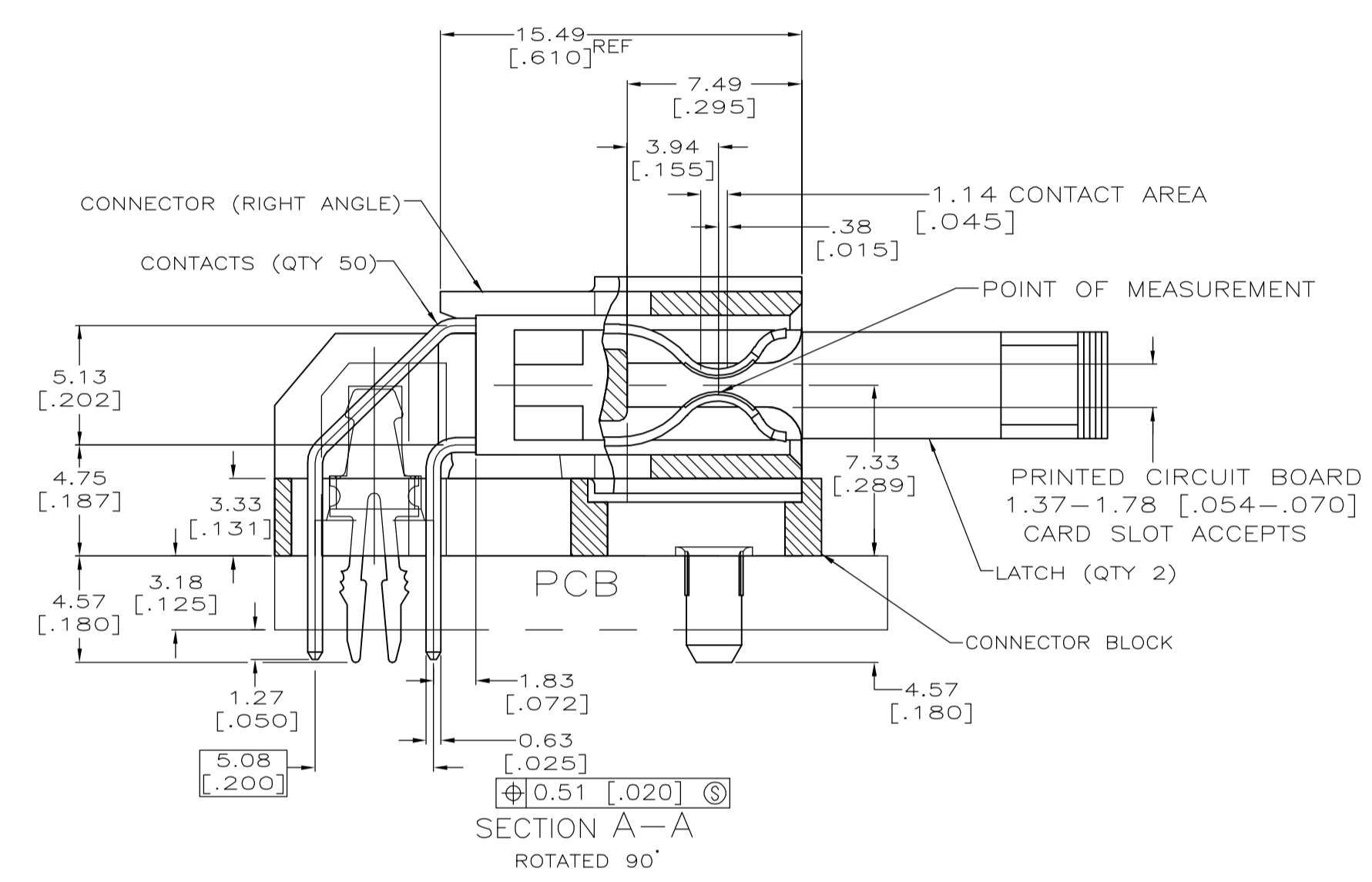


- 1 HOUSING AND SUPPORT BLOCK: GLASS FILLED POLYESTER; COLOR: BLACK.
- 2 CONTACT: PHOSPHOR BRONZE.
- 3 NICKEL PLATE: 0.00127 [.000050] MIN - ALL OVER.
- 4 MATTE TIN PLATE: 0.00254 [.000100] MIN - SOLDER POSTS.
- 5 GOLD PLATE: 0.00076 [.000030] MIN - CONTACT AREA.
- 6 AMP PART NUMBER, DATE CODE AND CSA LOGO MAY BE MARKED IN APPROXIMATE AREA SHOWN.
- 7 DATUMS AND BASIC DIMENSIONS ESTABLISHED BY CUSTOMER
- 8 CAUTION, LATCHES ARE INTENDED FOR RETENTION OF PC BOARD TO CONNECTOR. DO NOT ATTEMPT TO FULLY EJECT PC BOARD FROM CONNECTOR WHILE DISENGAGING LATCHES. DAMAGE TO LATCHES AND OR CONNECTOR WILL OCCUR. CONSULT AMP ENGINEERING FOR INFORMATION RELATED TO THIS CONNECTOR APPLICATION.



RECOMMENDED MATING BOARD EDGE CONFIGURATION

RECOMMENDED PC BOARD HOLE LAYOUT

25	6364633-1
NO OF POSN	PART NUMBER

THIS DRAWING IS A CONTROLLED DOCUMENT.		DIN AL FRANTUM 17 AUG 05		Tyco Electronics Corporation	
DIMENSIONS: mm		TOLERANCES UNLESS OTHERWISE SPECIFIED:		Harrisburg, Pa 17105-3608	
0 PLC	± .3	1 PLC	± 0.3 [.010]	PRODUCT SPEC 108-9039	
1 PLC	± .3	2 PLC	± 0.13 [.005]	APPLICATION SPEC	
2 PLC	± .3	3 PLC	± .3	SIZE CASE CODE DRAWING NO RESTRICTED TO	
3 PLC	± .3	4 PLC	± .3	A1 00779 C=6364633	
4 PLC	± .3	ANGLES	± .2	CUSTOMER DRAWING SCALE 4:1 SHEET 1 OF 1 REV A	