

# HC-STA-A16PT-BWS-HT-M25-ELCAL - Connector set



1424461

<https://www.phoenixcontact.com/us/products/1424461>

Please be informed that the data shown in this PDF document is generated from our online catalog. Please find the complete data in the user documentation. Our general terms of use for downloads are valid.



Connector set, number of positions: 16, connection method: Push-in connection, connection cross section: AWG 26- 14

## Commercial data

|                                      |               |
|--------------------------------------|---------------|
| Item number                          | 1424461       |
| Packing unit                         | 1 pc          |
| Minimum order quantity               | 1 pc          |
| Sales key                            | BF63          |
| Product key                          | BF7AFX        |
| GTIN                                 | 4055626372907 |
| Weight per piece (including packing) | 442 g         |
| Weight per piece (excluding packing) | 387 g         |
| Customs tariff number                | 85366990      |
| Country of origin                    | CN            |

# HC-STA-A16PT-BWS-HT-M25-ELCAL - Connector set



1424461

<https://www.phoenixcontact.com/us/products/1424461>

## Set consists of

### HC-A16-I-PT-M - Contact insert

1585375

<https://www.phoenixcontact.com/us/products/1585375>



Contact insert, number of positions: 16+PE, size: D25, number of connections per position: 1, Pin, Push-in connection, 250 V, 16 A, 0.14 mm<sup>2</sup> ... 2.5 mm<sup>2</sup>

---

### HC-A16-I-PT-F - Contact insert

1585388

<https://www.phoenixcontact.com/us/products/1585388>



Contact insert, number of positions: 16+PE, size: D25, number of connections per position: 1, Socket, Push-in connection, 250 V, 16 A, 0.14 mm<sup>2</sup> ... 2.5 mm<sup>2</sup>

# HC-STA-A16PT-BWS-HT-M25-ELCAL - Connector set



1424461

<https://www.phoenixcontact.com/us/products/1424461>

## HC-STA-D25-BWS-EL-AL - Housing

1424391

<https://www.phoenixcontact.com/us/products/1424391>



Panel mounting base D25, with single locking latch, material: Die-cast aluminum, salt water resistant, height: 26 mm, cable gland: none, Standard

---

## HC-STA-D25-HHFS-1TTM25-ELC-AL - Housing

1424382

<https://www.phoenixcontact.com/us/products/1424382>



Sleeve housing D25, for single locking latch, material: Die-cast aluminum, salt water resistant, cable outlets: 1, straight, 1x M25, height: 72 mm, cable gland: none, Standard

# HC-STA-A16PT-BWS-HT-M25-ELCAL - Connector set



1424461

<https://www.phoenixcontact.com/us/products/1424461>

## G-INS-M25-M68N-NNES-S - Cable gland

1411165

<https://www.phoenixcontact.com/us/products/1411165>



Cable gland, material for screw connection: Brass, nickel-plated, external cable diameter 11 mm ... 17 mm, shielding: no, connecting thread: M25 x 1.5, color: silver, with O-ring

1424461

<https://www.phoenixcontact.com/us/products/1424461>

## Technical data

### Product properties

|                      |                  |
|----------------------|------------------|
| Type                 | D25              |
| Product type         | Connector set    |
| Number of positions  | 16               |
| Application          | Standard         |
| No. of cable outlets | 1                |
| Housing type         | Complete housing |
| Protective cover     | no               |

### Insulation characteristics

|                      |     |
|----------------------|-----|
| Overvoltage category | III |
| Degree of pollution  | 3   |

### Electrical properties

|                       |       |
|-----------------------|-------|
| Rated voltage (III/3) | 250 V |
| Rated surge voltage   | 4 kV  |
| Rated current         | 16 A  |

### Connection data

|                              |  |
|------------------------------|--|
| Connection method            | Push-in connection   |
| Connection technology        | Push-in connection   |
| Conductor cross section      | 0.14 mm <sup>2</sup> ... 2.5 mm <sup>2</sup> (applies to stranded conductors with ferrules)<br>0.14 mm <sup>2</sup> ... 2.5 mm <sup>2</sup> (applies to stranded conductors with ferrules) |
| Connection cross section AWG | 26 ... 14  |

### Dimensions

#### Installation dimensions

|                               |       |
|-------------------------------|-------|
| Width of the assembly cutout  | 24 mm |
| Length of the assembly cutout | 74 mm |

### Material specifications

|  |  |
|--|--|
| Material                               | Die-cast aluminum, saltwater-resistant |
| Flammability rating according to UL 94 | V0                                     |
| Contact material                       | Copper alloy                           |
| Contact surface material               | Ag                                     |
| Contact carrier material               | PC                                     |
| Locking latch material                 | PA                                     |
| Impact strength                        | IK08                                   |

### Cable/line

# HC-STA-A16PT-BWS-HT-M25-ELCAL - Connector set



1424461

<https://www.phoenixcontact.com/us/products/1424461>

|                             |                                |
|-----------------------------|--------------------------------|
| External cable diameter ( ) | 11 mm ... 17 mm                |
|                             | 14 mm ... 17 mm (for UL 514 B) |

## Environmental and real-life conditions

### Ambient conditions

|                                 |                   |
|---------------------------------|-------------------|
| Degree of protection            | IP66              |
|                                 | IP67              |
| Degree of protection (NEMA)     | 4 (UL 50e)        |
|                                 | 4X (UL 50e)       |
|                                 | 12 (UL 50e)       |
| Impact strength                 | IK08              |
| Ambient temperature (operation) | -40 °C ... 100 °C |

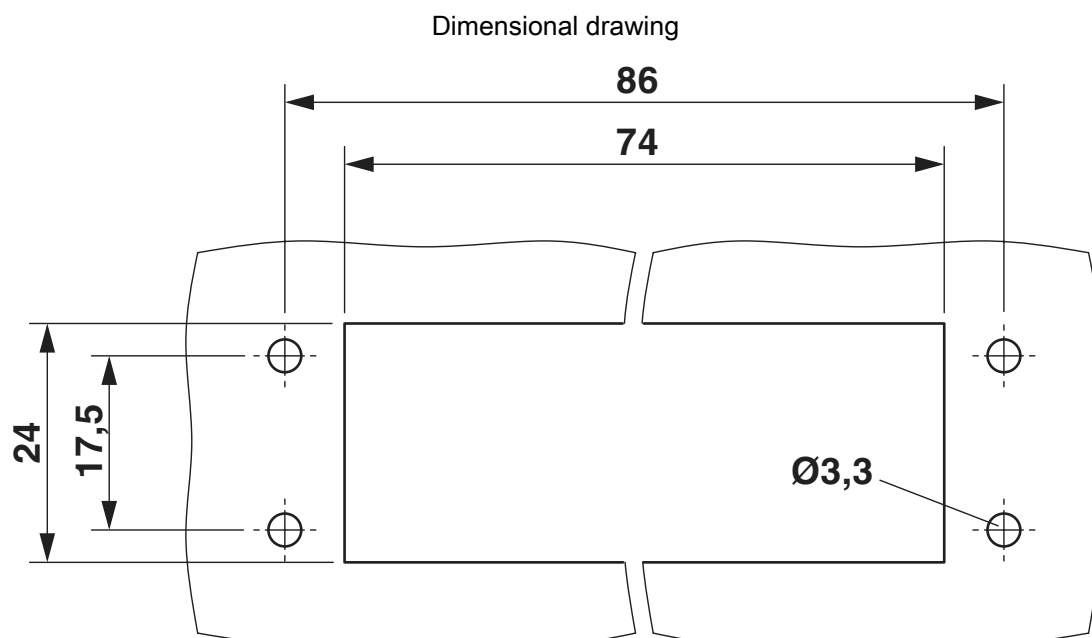
## Mounting

|                   |                    |
|-------------------|--------------------|
| Connection method | Push-in connection |
|-------------------|--------------------|

1424461

<https://www.phoenixcontact.com/us/products/1424461>

## Drawings

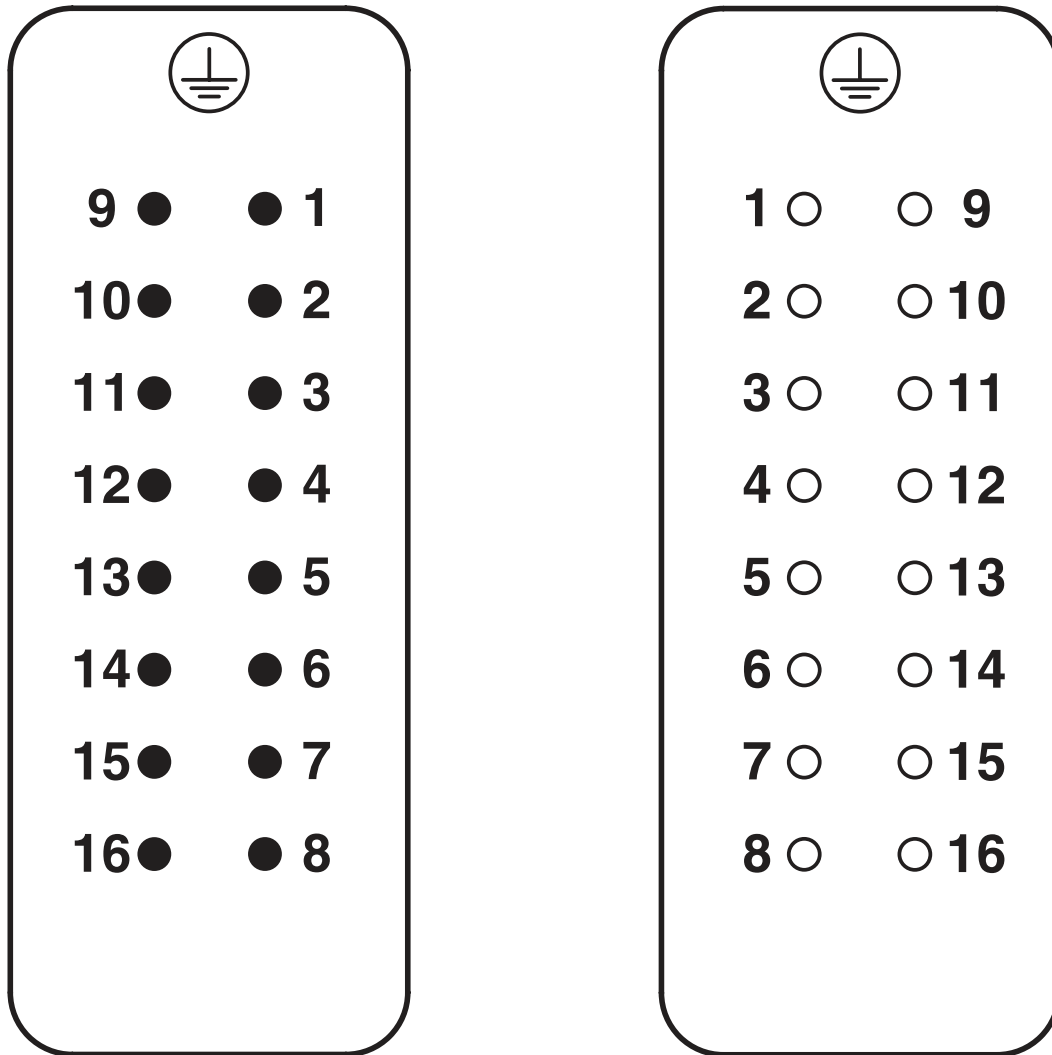


Mounting cutout

1424461

<https://www.phoenixcontact.com/us/products/1424461>

Schematic diagram

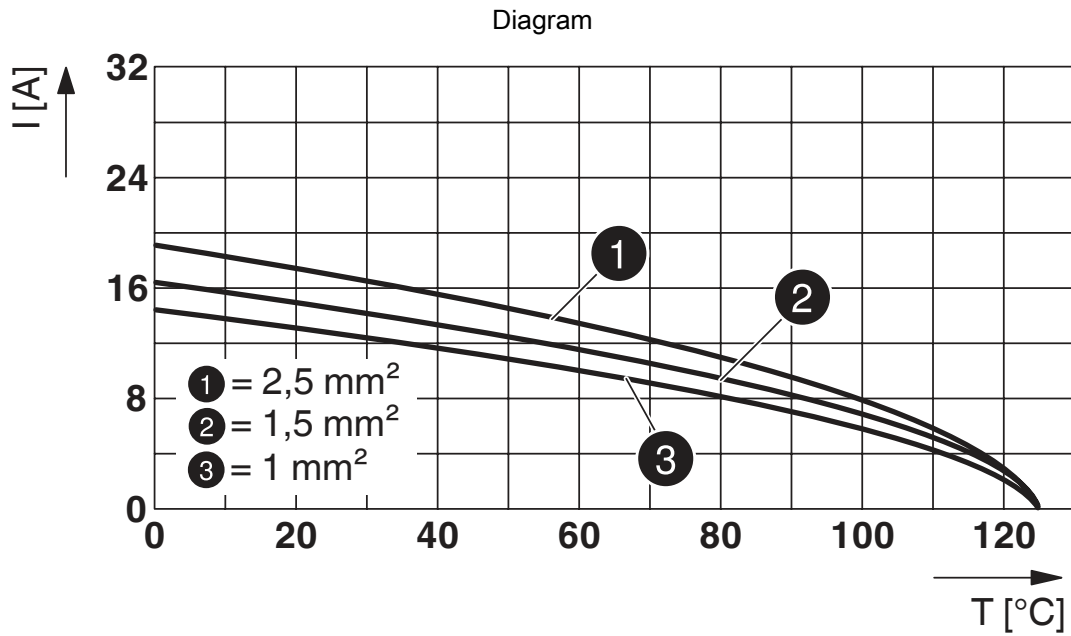


Pin assignment, connection side, pin left, socket right



1424461

<https://www.phoenixcontact.com/us/products/1424461>



Derating diagram

1424461

<https://www.phoenixcontact.com/us/products/1424461>

## Approvals

🔗 To download certificates, visit the product detail page: <https://www.phoenixcontact.com/us/products/1424461>

**DNV**

Approval ID: TAE000037S

**ENEC**

**EAC**

Approval ID: RU C-DE.BL08.B.00511

1424461

<https://www.phoenixcontact.com/us/products/1424461>

## Classifications

### ECLASS

|             |          |
|-------------|----------|
| ECLASS-11.0 | 27440101 |
| ECLASS-12.0 | 27440113 |
| ECLASS-13.0 | 27440113 |

### ETIM

|          |          |
|----------|----------|
| ETIM 8.0 | EC002636 |
|----------|----------|

### UNSPSC

|             |          |
|-------------|----------|
| UNSPSC 21.0 | 39121400 |
|-------------|----------|

# HC-STA-A16PT-BWS-HT-M25-ELCAL - Connector set



1424461

<https://www.phoenixcontact.com/us/products/1424461>

## Environmental product compliance

|            |  |
|------------|--|
| REACH SVHC | Lead 7439-92-1   |
| China RoHS | Environmentally Friendly Use Period = 50 years   |
|            | For information on hazardous substances, refer to the manufacturer's declaration available under "Downloads" |

Phoenix Contact 2023 © - all rights reserved  
<https://www.phoenixcontact.com>

Phoenix Contact USA  
586 Fulling Mill Road  
Middletown, PA 17057, United States  
(+717) 944-1300  
[info@phoenixcon.com](mailto:info@phoenixcon.com)