

4

3

2

1

THIS DRAWING IS UNPUBLISHED. RELEASED FOR PUBLICATION
© COPYRIGHT ALL RIGHTS RESERVED.

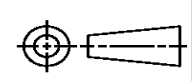
LOC	DIST	REVISIONS			
P	LTR	DESCRIPTION	DATE	DWN	APVD
	A2	ECR-14-001885	11FEB2014	GK	HMR

REPLACED BY OCEAN STYLE APPLICATOR PART NUMBER 2151367-6

FOR REPLACEMENT PARTS FOR APPLICATOR 1911064
REFER TO ADDITIONAL PAGE(S). SPARE PARTS KIT (IF LISTED)
WILL REMAIN AVAILABLE.

THE REPLACEMENT OCEAN STYLE APPLICATOR HAS THE
SAME TERMINATOR/PRESS INTERFACE AS APPLICATOR
1911064

THIS DRAWING IS A CONTROLLED DOCUMENT.		DWN	GOPALAKRISHNA HV														
DIMENSIONS:		CHK	RAGHAVENDRA														
TOLERANCES UNLESS OTHERWISE SPECIFIED:		APVD	RAGHAVENDRA														
<table border="0"> <tr><td>0 PLC</td><td>±</td></tr> <tr><td>1 PLC</td><td>±</td></tr> <tr><td>2 PLC</td><td>±</td></tr> <tr><td>3 PLC</td><td>±</td></tr> <tr><td>4 PLC</td><td>±</td></tr> <tr><td>ANGLES</td><td>±</td></tr> </table>		0 PLC	±	1 PLC	±	2 PLC	±	3 PLC	±	4 PLC	±	ANGLES	±	PRODUCT SPEC	NAME		
0 PLC	±																
1 PLC	±																
2 PLC	±																
3 PLC	±																
4 PLC	±																
ANGLES	±																
MATERIAL		APPLICATION SPEC	SIDE FEED SYSTEM III APPLICATOR														
FINISH		WEIGHT	SIZE	CAGE CODE	DRAWING NO												
			A3		©- 1911064												
		CUSTOMER DRAWING	SCALE	SHEET 1 OF 2	REV A2												



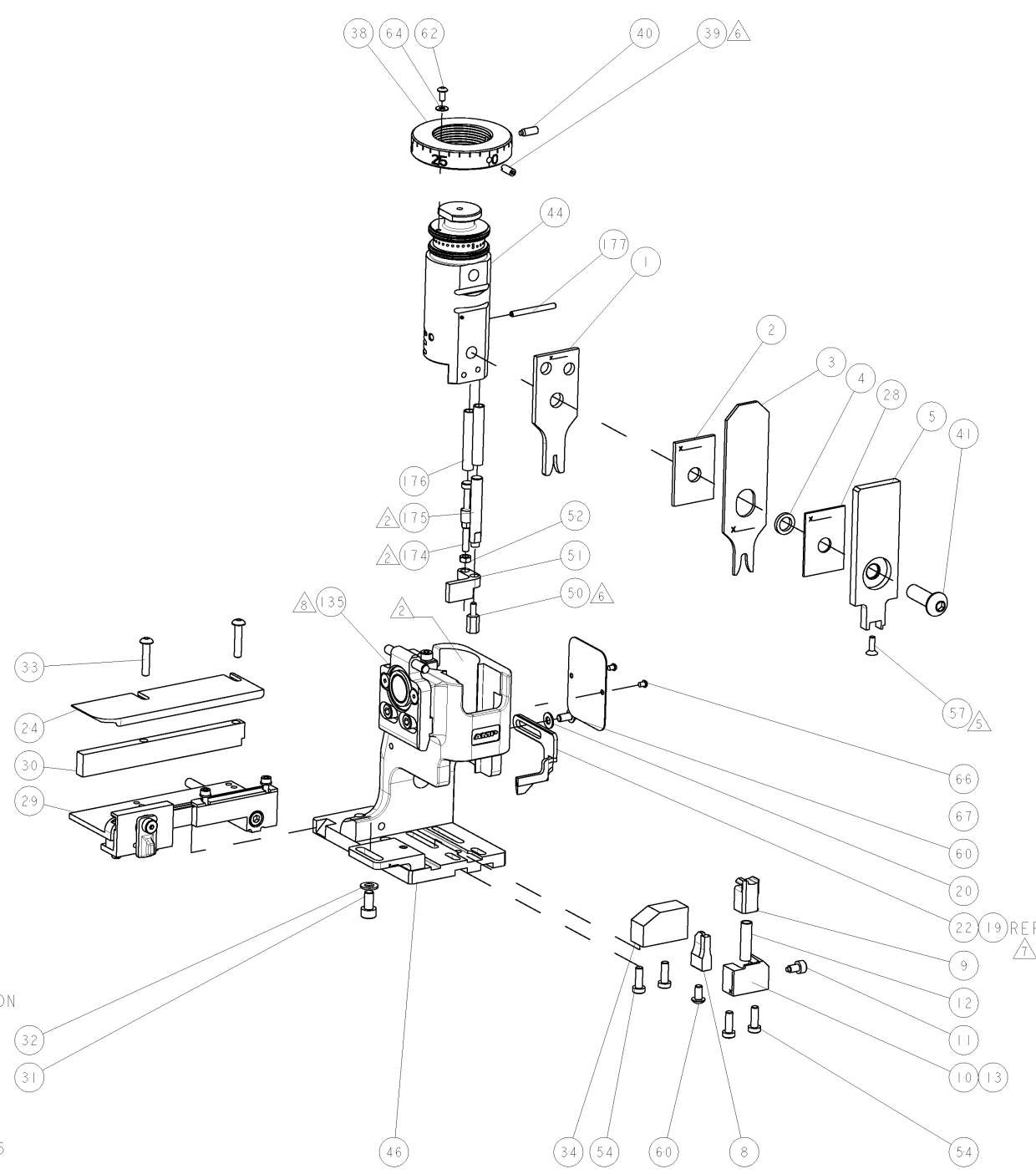
PART NUMBER	REV	DESCRIPTION	PROGRAMMED MEMORY CHIP
1911064-1	A	CUTS CARRIER	8-1911064-1
1911064-6	A	CONTINUOUS CARRIER	8-1911064-6
7-1911064-1	A	-1 AND SPARE PARTS	9-1911064-1
7-1911064-6	A	-6 AND SPARE PARTS	9-1911064-6
7-1911064-7	A	SPARE PARTS KIT	-

APPLICATOR DATA		
CRIMP	SIZE	TYPE
WIRE	2.01 [1.079 INJ]	F
INSUL	3.94 [1.155 INJ]	O

TERMINAL DATA: G&H TERMINAL TYCO ELECTRONICS CRIMP SPEC			
TERMINAL NAME: MKR plus G&H/LEAR			
WIRE STRIP LENGTH	INSULATION DIAMETER RANGE		
4.2-4.5 mm [1.65-.180 INJ]	1.20-2.10mm [1.047-.082 INJ]		
TERMINAL APPL SPEC	TE SEAL	G&H SEAL	
NONE			

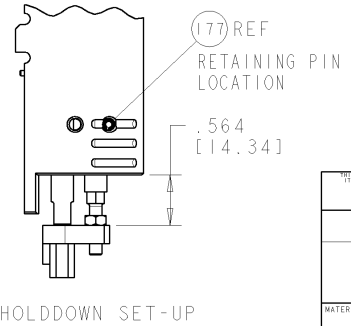
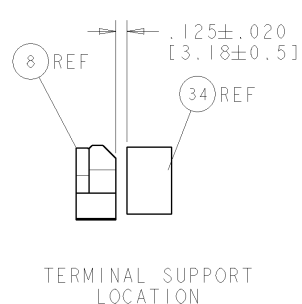
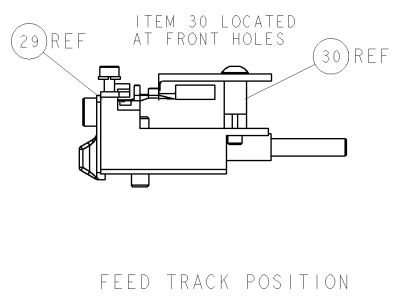
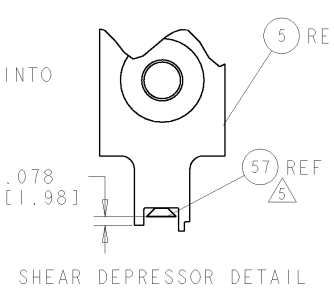
WIRE SIZE	CRIMP HEIGHT
mm [INCH]	mm [INCH]
0.5mm ²	-1.25±.05 [-1.049±.002]
0.75mm ²	-1.35±.05 [-1.053±.002]
1mm ²	-1.45±.05 [-1.057±.002]

FEED FINGER	SET UP GAGE	LOC	DIST	REVISIONS			
1901694-1	1901040-1	A	66	REV	DESCRIPTION	DATE	BY
				A	RELEASED	230CT2007	RD
				A1	ECR-09-009208	22APR2009	MY



REV	DESCRIPTION	DATE	BY	ITEM NO		
-	1	1	1	1-993111-6	PIN, SLOTTED SPRING 3.0 X 30.0	177
-	2	2	2	3-22280-7	SPRING, COMPRESSION	176
-	1	1	1	1752353-1	GUIDE PIN, HOLDDOWN	175
-	1	1	1	1901680-1	GUIDE PIN, HOLDDOWN	174
-	REF	REF	REF	SEE TABLE	MEMORY CHIP, PROGRAMMED	135
-	1	1	1	1633565-1	DOCUMENTATION PACKAGE S111	71
-	1	1	1	1901048-1	TAG, IDENTIFICATION	67
-	2	2	2	21017-1	SCREW, DRIVE	66
-	1	1	1	18028-1	WASHER, FLAT, REG M3	64
-	1	1	1	1655785-9	SCR, BTN SKT HD CAP (M3 X 6)	62
-	2	2	2	1655785-1	SCR, BTN SKT HD CAP (M4 X 8)	60
-	1	1	1	985575-3	SCR, FLT SKT HD CAP M3 X 10.0	57
-	4	4	4	1655783-3	SCR, CAP, SOC HD, LOW HEAD, M4 X 12	54
-	1	1	1	1-18030-0	NUT, HEX, REG M3.5	52
-	1	1	1	1901681-1	HOLDDOWN, TERMINAL	51
-	1	1	1	2-1752354-3	STANDOFF, HOLD-DOWN	50
-	1	1	1	1752300-1	SF SYSTEM III APPLICATOR	46
-	1	1	1	1752308-1	RAM	44
-	1	1	1	2-1655785-3	SCR, BTN SKT HD CAP (M8 X 25)	41
-	1	1	1	993002-4	SCREW, SET, SFT TIP	40
-	1	1	1	1962043-1	PLUNGER, BALL, METRIC	39
-	1	1	1	1752309-2	RING, INSULATION CRIMP	38
-	1	1	1	1752356-6	SUPPORT, TERMINAL	34
-	2	2	2	3-1655785-3	SCR, BTN SKT HD CAP (M4 X 20)	33
-	1	1	1	18028-3	WASHER, FLAT, REG M5	32
-	1	1	1	5-1655316-3	SCR, SKT HD CAP, M5 X 10.0	31
-	1	1	1	1320908-2	SPACER, STRIP GUIDE	30
-	1	1	1	1901087-4	ASSEMBLY, STRIP GUIDE	29
-	1	1	1	1-455888-0	SPACER, CRIMPER	28
-	1	1	1	1320928-1	PLATE, STRIP GUIDE	24
-	1	1	1	1976045-1	STRIPPER	22
-	1	1	1	18028-2	WASHER, FLAT, REG M4	20
-	REF	REF	REF	1752311-1	STRIPPER	19
-	1	1	1	1338684-2	SHEAR HOLDER, FRONT	13
-	1	1	1	3-22280-3	SPRING, COMPRESSION	12
-	1	1	1	356885-5	STOP, SHEAR	11
-	1	1	1	1-1320921-0	SHEAR HOLDER, FRONT, CUT	10
-	1	1	1	318707-2	FLOATING SHEAR, FRONT	9
-	1	2	2	6-1633138-5	ANVIL, COMBINATION	8
-	1	1	1	1338680-2	DEPRESSOR, SHEAR	5
-	1	1	1	238011-7	BLOCK, CRIMPER SPACER	4
-	1	2	2	8-683454-6	CRIMPER, INSULATION O	3
-	1	1	1	1-455888-9	SPACER, CRIMPER	2
-	1	2	2	1633588-4	CRIMPER, WIRE	1

- 1 RECOMMENDED SPARE PARTS.
- 2 GREASE BEARING SURFACES LIGHTLY.
- 3 LUBRICATE DAILY PER THE APPLICATOR INSTRUCTION SHEET SUPPLIED WITH THE APPLICATOR.
- 4 THIS APPLICATOR APPLIES TERMINAL WITH A SEAL. WIRE INSULATION DIA IS DEPENDENT ON SEAL BEING APPLIED. SEE APPL. SPEC. FOR DETAILS.
- 5 APPLY TORQ-SEAL IN ALLEN SOCKET TO FILL HOLE AFTER FLAT HD HAS BEEN ADJUSTED TO CORRECT HEIGHT AT QUALIFICATION. APPLY P/N 1-23419-5 LOCTITE(R) TO THREADS.
- 6 APPLY P/N 1-23419-5 LOCTITE(R) TO THREADS.
- 7 ITEM 19 - OPTIONAL STRIPPER FOR BENCH MACHINE APPLICATION.
- 8 APPLICATOR SPECIFIC DATA TO BE ENTERED INTO BLANK MEMORY CHIP AT ASSEMBLY.



DIMENSIONS (INCHES/MM)	TOLERANCES UNLESS OTHERWISE SPECIFIED:	APPLICATOR SPEC	SEE TABLE
0 PLC	±.005		
1 PLC	±.004		
2 PLC	±.003		
3 PLC	±.002		
4 PLC	±.001		
5 HOLE	±.001		