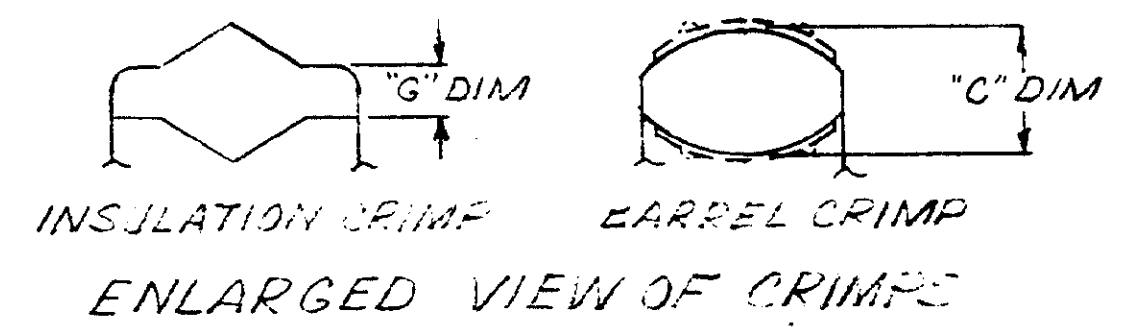
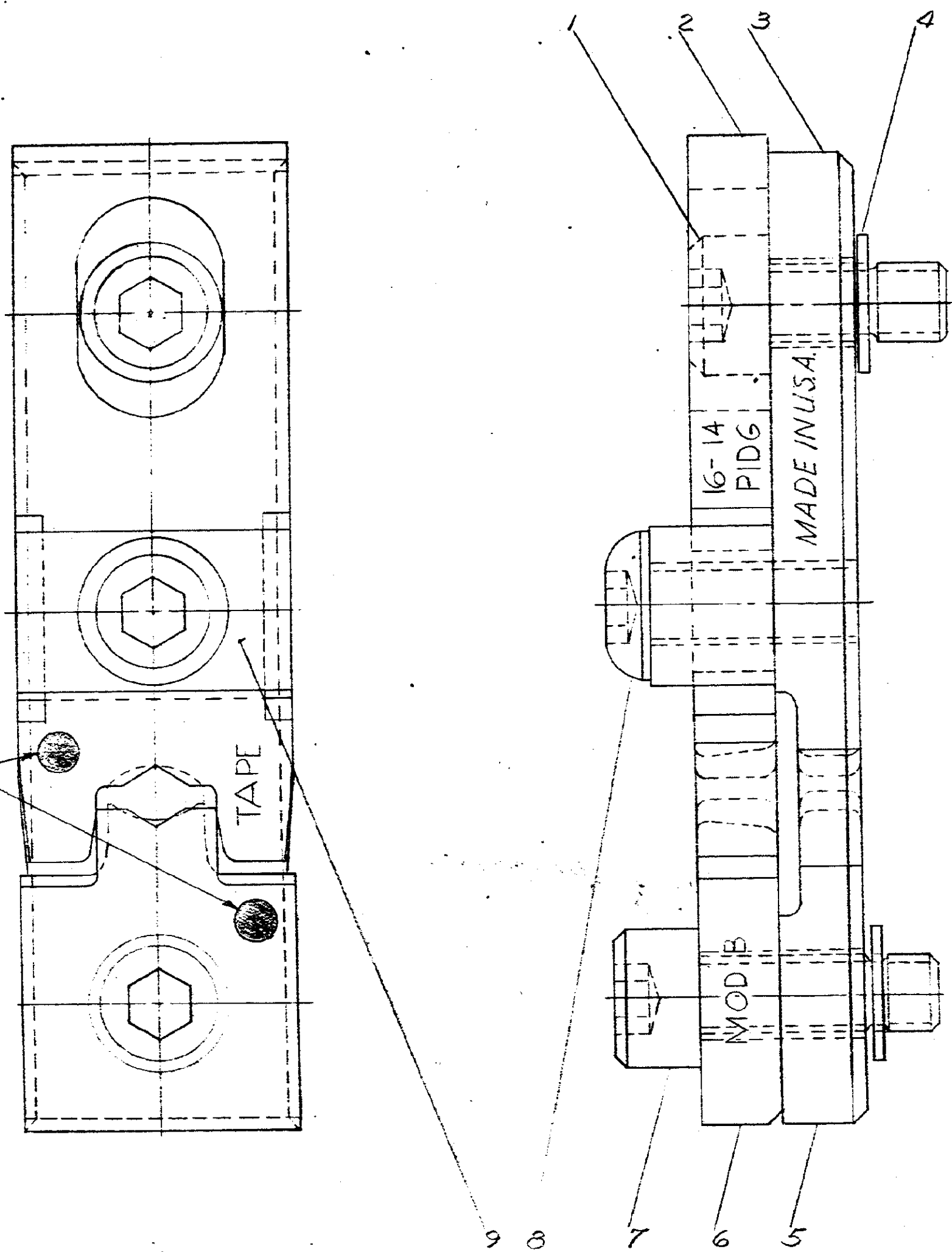
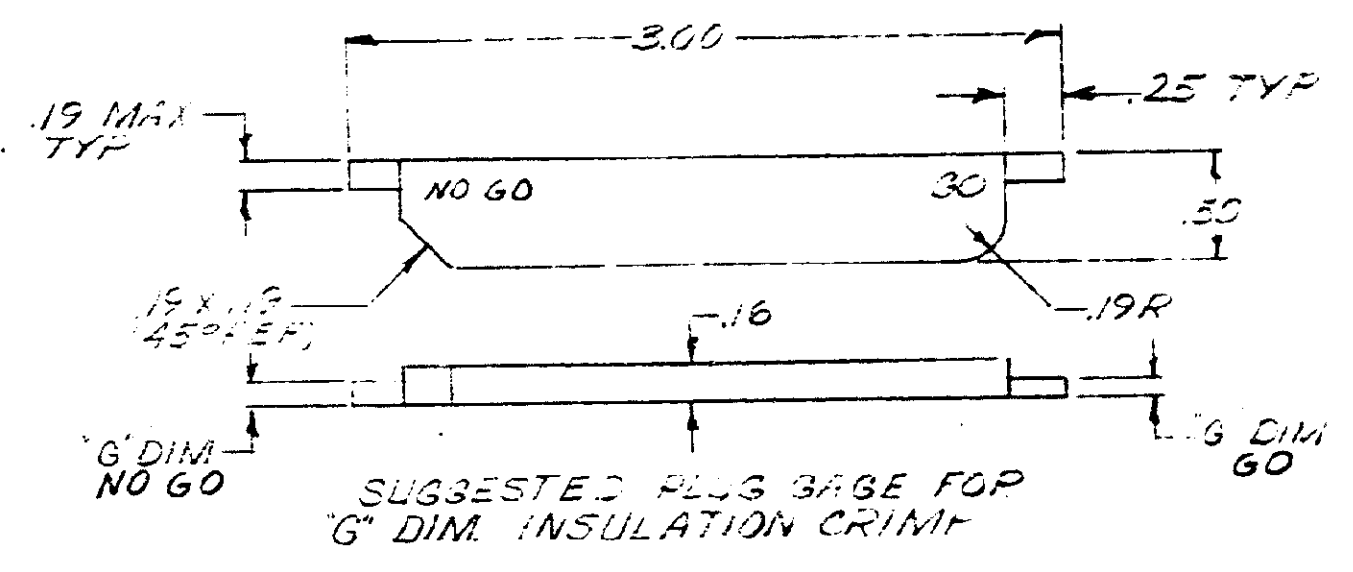
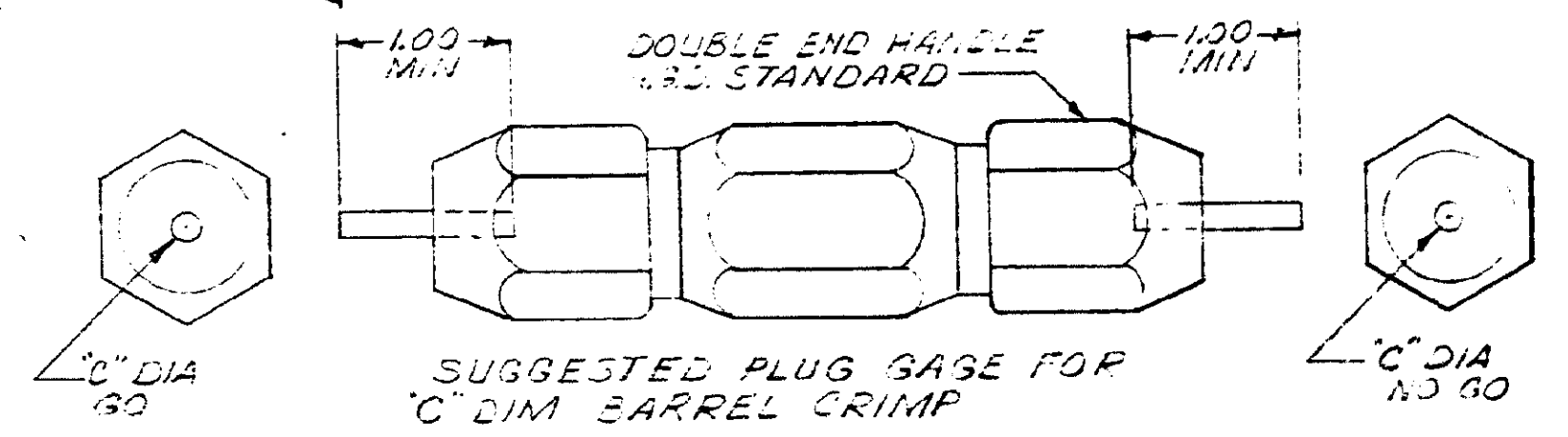


NUMBER 69873

PLUG GAGE DIMENSIONS APPLY WHEN TOOL IS
BOTTOMED BUT NOT UNDER PRESSURE.



"G" DIM. AT POS #1		"C" DIM	
GO	NO GO	GO	NO GO
.040	.060	.119	.125



COLOR CODED:
BLUE

TAPE

SUPERSEDED BY IS-2423

1	307275-1	SADDLE	9
1	2-59577-9	SCREW (10-32 UNF-3A X 40 LONG)	8
1	59781-6	SCREW-SPECIAL	7
1	1-59619-8	ANVIL-INSULATION	6
1	59573-5	ANVIL	5
2	1-21046-3	RING-RETAINING	4
1	59779-3	INDENTER	3
1	307285-2	INDENTER-INSULATION	2
1	59781-2	SCREW-SPECIAL	1

DESCRIPTION	DWG SIZE	NUMBER	NAME	REMARKS	ITEM NO.
REQUIRED PER ASSEMBLY					
©1969 BY AMP INCORPORATED. ALL RIGHTS RESERVED. AMP PRODUCTS COVERED BY PATENTS AND/OR PATENTS PENDING.					
DR E. Shenfeld 11-24-69 CHK J. J. J. 12-1-69 DE J. J. J. 12-1-69			MATERIAL AND FINISH + + + WIRE - RANGE - INSULATION (16-14) + + + TOLERANCE EXCEPT AS NOTED ± .015 = 1" 0' SCALE 4-1 LOC MIC NO. 69873 REV 8/1		
USED ON 69875 TYPE CONTAINED CRESCENT PRE-INSUL DIAMOND GRIP				AMP INCORPORATED HARRISBURG, PENNA.	
DIE ASSEMBLY MOD B					

REVISION	REVISION RECORD	ECN	DATE
1	REVISED		12-1-69
2	SUPD BY IS-2423		1-28-71

DIMENSIONS IN INCHES DO NOT SCALE PRINT.