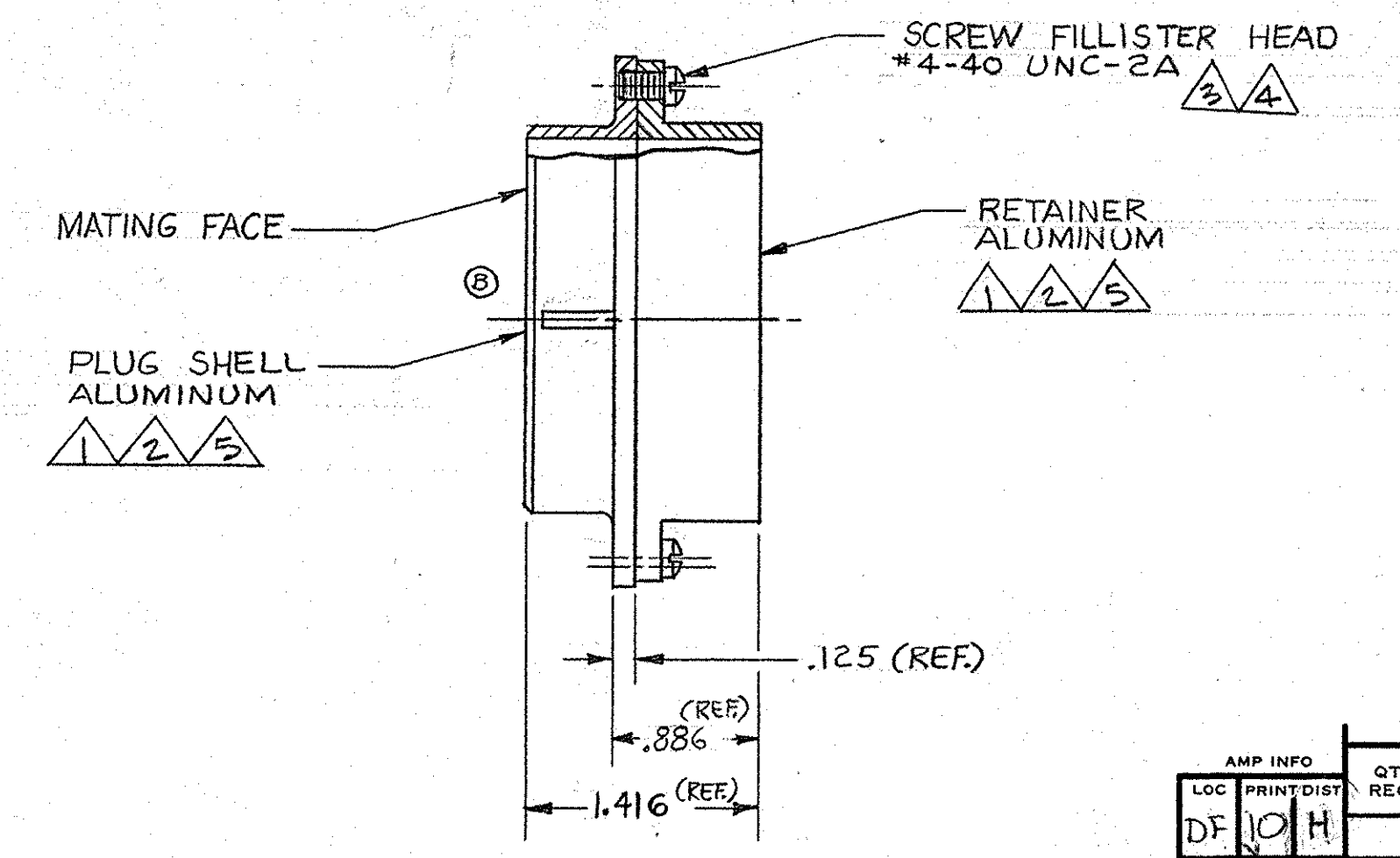
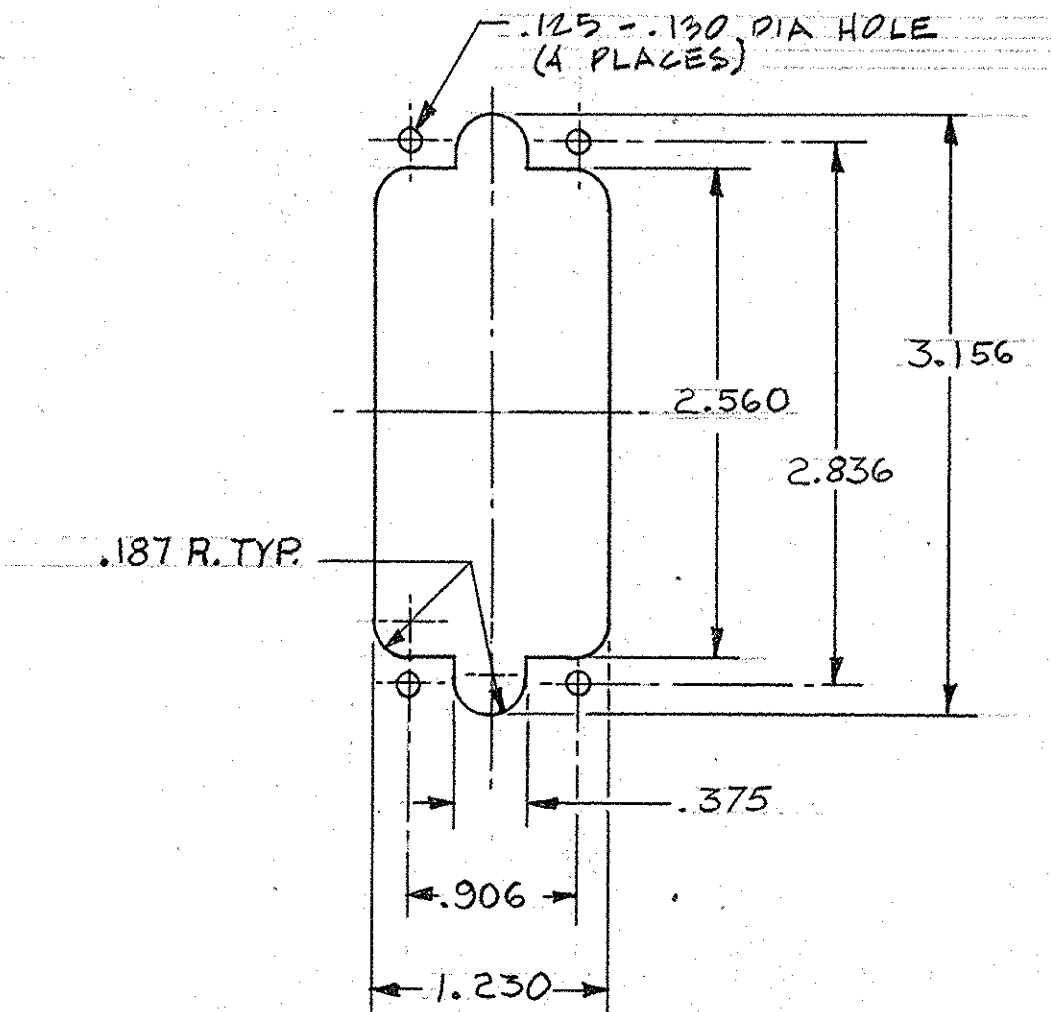
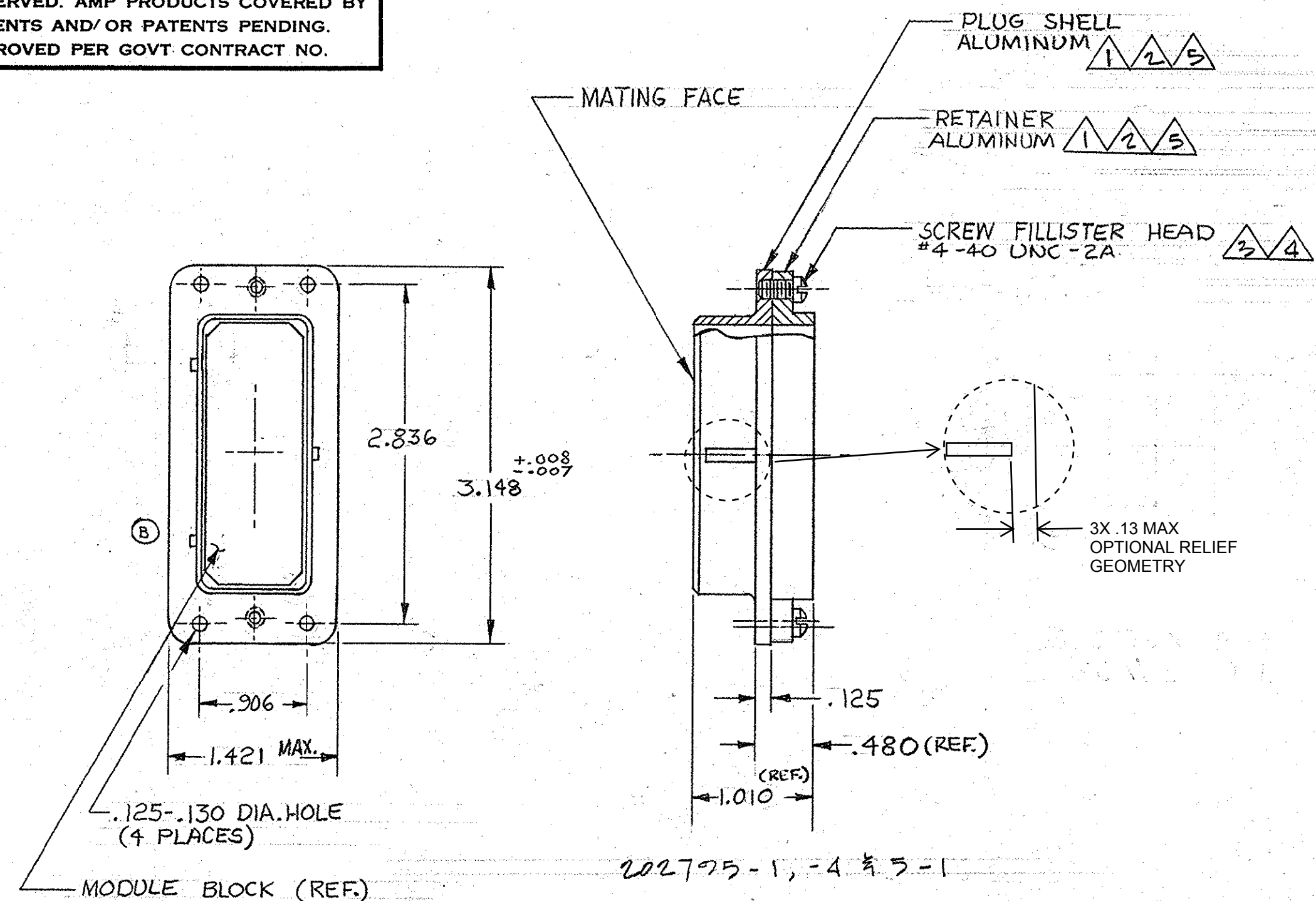


© 1965 BY AMP INCORPORATED. ALL RIGHTS RESERVED. AMP PRODUCTS COVERED BY PATENTS AND/OR PATENTS PENDING. APPROVED PER GOVT CONTRACT NO.

REVISIONS				
SYM	ZONE	DESCRIPTION	DATE	APPROVAL
K		REV PER ECO 18-012801	CT 11-18	PD



PANEL CUTOUT
SCALE: 1-1

- ① ZINC PLATE PER ASTM-B-633 TYPE II .000200-.000400 THK CLASS 3 COLORLESS SUPPLEMENTARY CHROMATE.
- ② ELECTROLESS NICKEL PLATE PER SAE-AMS-C-2607A .000400-.000800 THK (NO INTENTIONAL ADDITIONS OF LEAD OR CADMIUM PER DFE STANDARD 230-700).
- ③ ZINC PLATED COLD ROLLED STEEL.
- ④ PASSIVATED STAINLESS STEEL.
- ⑤ CADMIUM PLATE PER QQ-P-416 .000200-.000400 THK.

5-202795-2	FOR PINS	② ④	
5-202795-1	FOR SOCKETS	② ④	
202795-4	FOR SOCKETS	① ⑤	OBSOLETE
202795-3	FOR PINS	① ③	OBSOLETE
202795-2	FOR PINS	① ③	SUPERSEDED BY 5-202795-2
202795-1	FOR SOCKETS	① ③	SUPERSEDED BY 5-202795-1
PART NO.	ASSY TYPE	FINISH	

202795-2, -3 & 5-2

LOC	PRINT/DIST	QTY REQD	NOMENCLATURE OR DESCRIPTION	PART OR IDENTIFYING NO
DF	10/H			
LIST OF MATERIALS OR PARTS LIST				
UNLESS OTHERWISE SPECIFIED DIMENSIONS ARE IN INCHES TOLERANCES ON		SIGNATURE		DATE
FRACTIONS	DECIMALS	E. Benninger		10-12-65
± --	± .005	S. Heide		11-9-65
ANGLES		D. S. Williams		11-9-65
± --		R. B. Miller, Jr.		11-9-65
MATERIAL		HEAT TREAT		
SEE CALL OUT		— H —		
FINISH		DSGN APPD		
SEE CALL OUT		OTHER APPD		
AMP INCORPORATED HARRISBURG, PENNSYLVANIA			NAME	
			PLUG ASSEMBLY, MODULE SERIES "G" (3 BLOCKS)	
CODE IDENT NO		SIZE	NUMBER	REV
00779		D	202795	K
SCALE	WT	CALC	ACTUAL	SHEET
1-1				1 of 1

CUSTOMER DRAWING