

PART NUMBER	REV	FIRST USED	TERMINATOR	FEED TYPE	DESCRIPTION
1528534-1	A	-	LEADMAKER	MECH POST FEED	CUTS CARRIER
1528534-2	A	-	BENCH	MECH PRE FEED	CUTS CARRIER
1528534-6	A	-	LEADMAKER	MECH POST FEED	CONTINUOUS CARRIER
7-1528534-1	A	-	LEADMAKER	MECH POST FEED	-1 AND SPARE PARTS
7-1528534-2	A	-	BENCH	MECH PRE FEED	-2 AND SPARE PARTS
7-1528534-6	A	-	LEADMAKER	MECH POST FEED	-6 AND SPARE PARTS
7-1528534-7	A	-	-	-	SPARE PARTS KIT

CRIMP DATA AMP TERMINAL AMP CRIMP SPECS

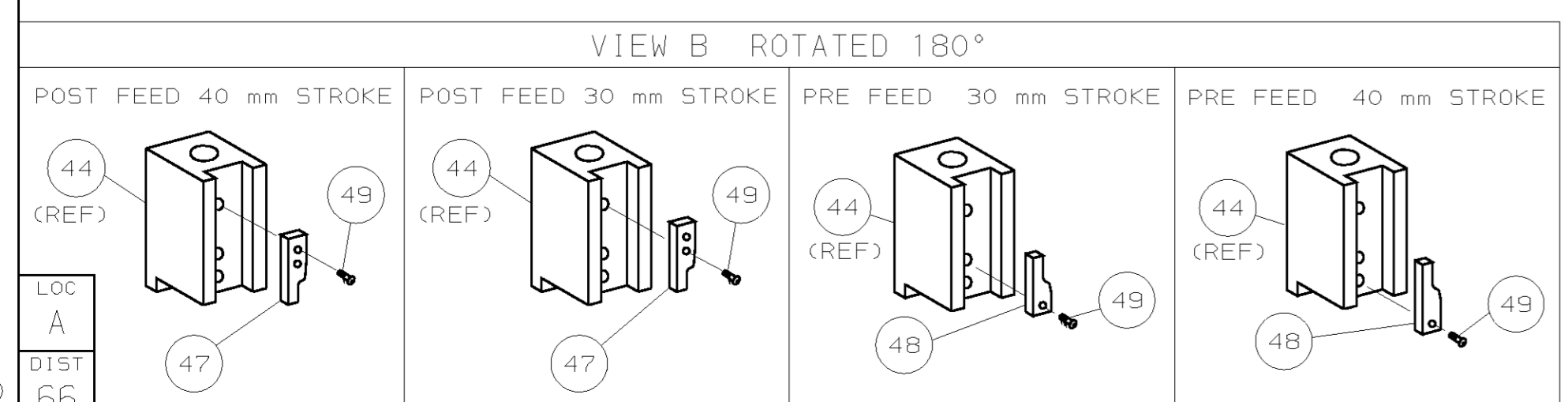
TERMINAL NAME: .070 SERIES MULTILOCK TAB CONTACT			
CRIMP	SIZE	TYPE	RANGE
WIRE	1.78 [.070 IN]	F	0.35mm ² - 0.50mm ²
INSUL	2.54 [.100 IN]	F	1.40-1.70 [.055-.067 IN]
WIRE STRIP LENGTH		APPL INSTRUCTION	
3.50 [.138 IN]		408-8322 & 408-8490	

TERMINAL	FEED
APPL SPEC 114-20095	11.90 [.469 IN]

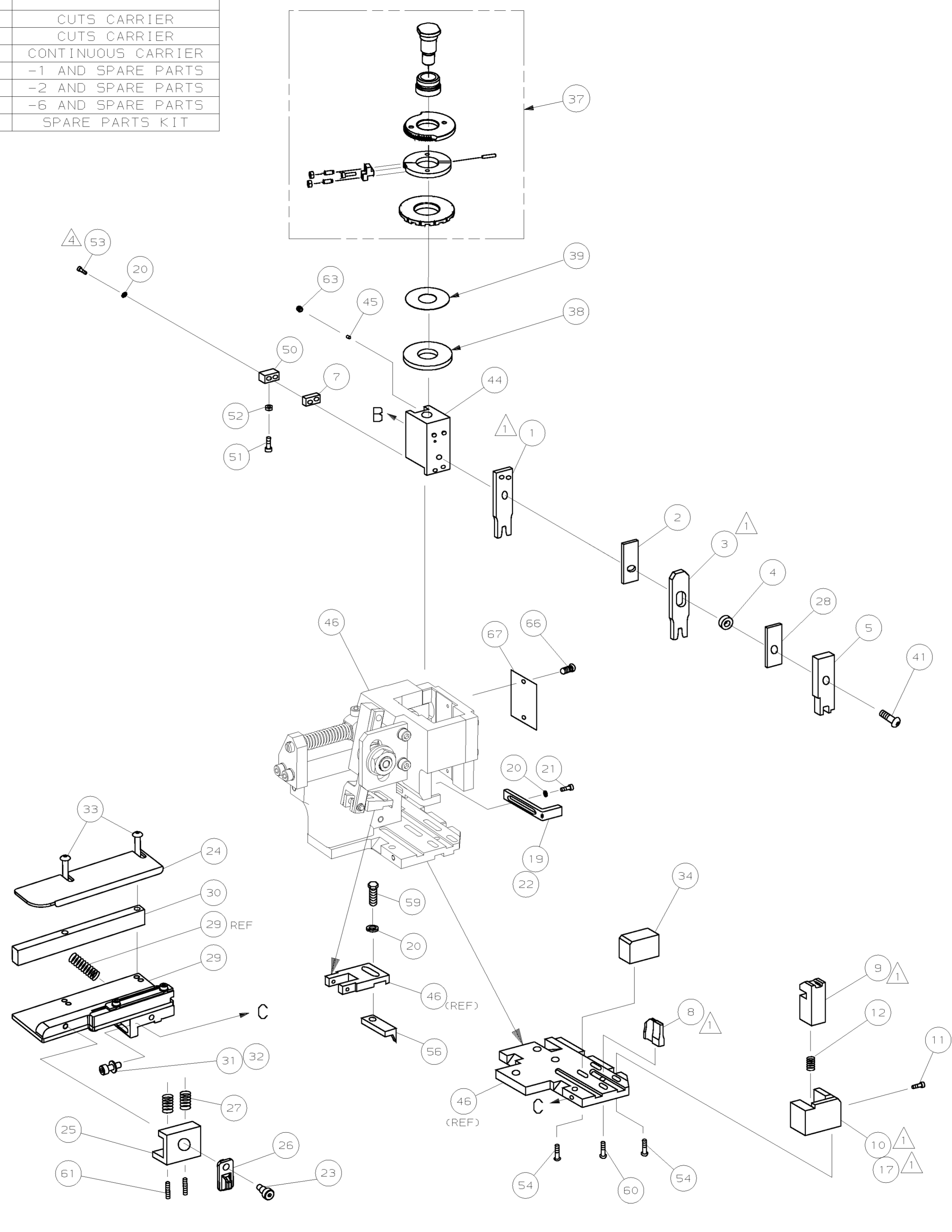
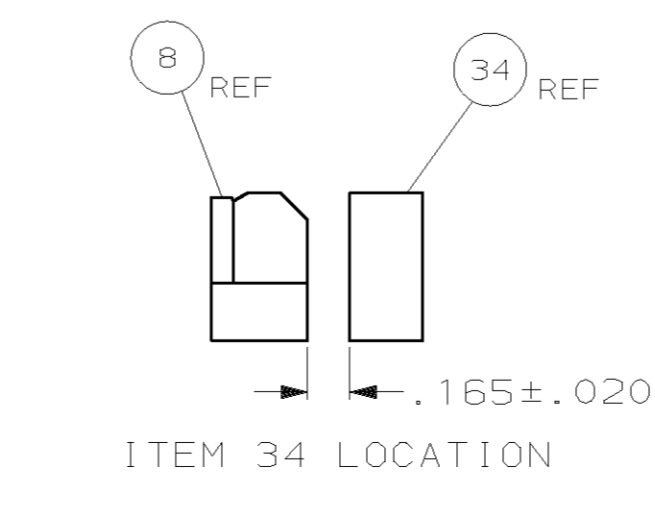
TERMINALS APPLIED					
284080	-	-	-	-	-
-	-	-	-	-	-
-	-	-	-	-	-
-	-	-	-	-	-
-	-	-	-	-	-
-	-	-	-	-	-
-	-	-	-	-	-
-	-	-	-	-	-
-	-	-	-	-	-
-	-	-	-	-	-

WIRE SIZE	CRIMP HEIGHT	REF SETTING
0.50mm ²	1.09 ± 0.03 [.043 ± .001 IN]	B 6
0.35mm ²	1.02 ± 0.03 [.040 ± .001 IN]	C 1

- RECOMMENDED SPARE PARTS.
- GREASE RAM, CAM, CAM FOLLOWER AND FEED ROD LIGHTLY.
- LUBRICATE DAILY PER THE APPLICATOR INSTRUCTION SHEET SUPPLIED WITH THE APPLICATOR.
- CUT TO LENGTH AT ASSY.



WARNING:
ON INSTALLATION, SET WIRE DISC TO LARGEST WIRE SIZE SETTING. USE OF SETTINGS BELOW MIN REQUIRED CRIMP HEIGHT SETTING WILL CAUSE DAMAGE TO CRIMP TOOLING.



						QTY	RECD PER ASSY	PARTS LIST	DESCRIPTION	ITEM NO
-	1	1	1	1	1	1	1528534	PRINT, APPLICATOR LOG SHEET		73
-	1	1	1	1	1	1	1338705-3	DOCUMENTATION PACKAGE		71
-										70
-										69
-										68
-	1	1	1	1	1	1	461264-5	PLATE, IDENTIFICATION		67
-	2	2	2	2	2	2	21017-2	SCR,DRIVE (#2x.19) ID PLATE		66
-										65
-										64
-	1	1	1	1	1	1	3-18031-0	SCR,SKT SET (M6X6) RAM		63
-										62
-	2	2	2	2	2	2	2-18032-5	SCR,SKT SET (M5X20) DRAG		61
-	1	1	1	1	1	1	18024-7	SCR,BHC (M4X10) ANVIL		60
-	1	1	1	1	1	1	5-18022-2	SCR,HEX (M4X8) FEED FINGER		59
-										58
-										57
-	1	1	1	1	1	1	1338685-1	PAWL, FEED		56
-										55
-	4	4	4	4	4	4	18024-8	SCR,BHC (M4X12) SHEAR HOLDER		54
-	2	2	2	2	2	2	1-18023-3	SCR,SHC (M4X16) TERM HLD DWN		53
-	1	1	1	1	1	1	18030-1	NUT,HEX (M3) HOLD DOWN		52
-	1	1	1	1	1	1	811242-5	BUMPER, HOLDDOWN		51
-	1	1	1	1	1	1	690753-2	SPACER, TONKER		50
-	1	1	1	1	1	1	18024-3	SCR,BHC (M3X10) CAM		49
-	-	-	-	-	-	-	1338675-1	CAM, PRE FEED 30 & 40 mm ST		48
-	1	-	1	-	-	1	1338676-1	CAM, POST FEED 30 & 40 mm ST		47
-	1	1	1	1	1	1	1320999-3	APPLICATOR BASIC SUBASSY		46
-	1	1	1	1	1	1	690191-1	PLUG, NYLON		45
-	1	1	1	1	1	1	1338660-1	RAM		44
-										43
-										42
-	1	1	1	1	1	1	2-18024-6	SCR,BHC (M8X25) RAM		41
-										40
-	1	1	1	1	1	1	690125-1	SHIM SUBASSY		39
-	1	1	1	1	1	1	469367-8	SPACER, FINE ADJUST		38
-	1	1	1	1	1	1	879103-3	FINE ADJUST HEAD SUBASSY		37
-										36
-										35
-	1	1	1	1	1	1	1320934-2	SUPPORT, TERMINAL		34
-	2	2	2	2	2	2	1-18024-0	SCR,BHC (M4X20) STRIP GUIDE		33
-	1	1	1	1	1	1	18027-2	WASHER, FLAT (M4)		32
-	1	1	1	1	1	1	1-18023-2	SCR,SKT CAP (M4X12) MOUNT BLOCK		31
-	1	1	1	1	1	1	1320908-4	SPACER, STRIP GUIDE		30
-	1	1	1	1	1	1	1633073-1	STRIP GUIDE PLATE ASSY		29
-	1	1	1	1	1	1	1-455888-0	SPACER, FRONT SHEAR DEP		28
-	2	2	2	2	2	2	1-22284-0	SPRING, DRAG		27
-	1	1	1	1	1	1	356835-1	LEVER, DRAG RELEASE		26
-	1	1	1	1	1	1	240792-1	DRAG, TERMINAL		25
-	1	1	1	1	1	1	1320928-1	PLATE, STRIP GUIDE		24
-	1	1	1	1	1	1	980371-4	SCR,SHC SHLD		23
-	1	-	1	-	-	1	690472-2	STRIPPER		22
-	1	1	1	1	1	1	1-18023-1	SCR,SHC (M4X10) STRIPPER		21
-	4	4	4	4	4	4	18025-2	WASHER, LOCK (M4) STRIPPER		20
-	-	1	-	-	-	1	690472-1	STRIPPER		19
-										18
-	1	-	-	1	-	-	1338684-1	HOLDER, SHEAR, FRONT (NO-CUT)		17
-										16
-										15
-										14
-										13
-	1	1	1	1	1	1	5-22280-0	SPRING, SHEAR		12
-	1	1	1	1	1	1	356885-4	STOP, SHEAR		11
-	-	1	1	-	1	1	1320921-1	HOLDER, SHEAR, FRONT (CUT)		10
-	1	1	1	1	1	1	462006-1	SHEAR, FLOAT (FRONT)		9
1	2	2	2	2	2	2	7-1333203-8	ANVIL		8
-	1	1	1	1	1	1	5-240641-2	SPACER, DEPRESSOR (REAR)		7
-										6
-	1	1	1	1	1	1	2-455889-0	DEPRESSOR, SHEAR (FRONT)		5
-	1	1	1	1	1	1	1-238011-0	SPACER, BLOCK CRIMPER		4
1	2	2	2	2	2	2	1333278-1	CRIMPER, INSULATION		3
-	1	1	1	1	1	1	455888-7	SPACER, CRIMPER		2
1	2	2	2	2	2	2	3-456404-0	CRIMPER, WIRE		1

DIMENSIONS: mm (INCHES) MATL		HT TR		FIN
DO NOT SCALE PRINT.				
TOLERANCES UNLESS OTHERWISE SPECIFIED:				
1 PLC DEC ±				
2 PLC DEC ±				
3 PLC DEC ±				
ANGLES ±				
SURF TEXTURE: ✓				
REMOVE BURRS, BREAK SHARP EDGES RO.38 MAX				
DR	16MAY05	APP	16MAY05	F.BACKHURST
CHK	-	REL	16MAY05	L.LOFTHOUSE
AMP Tyco Electronics Harrisburg, PA 17105-3608				
NAME			MACHINE REF	
FINE ADJ SIDE FD HD-I APPL			HD-I APPL	
SCALE		DWG NO		REVISION RECORD
-		D		1528534
SHEET		REV		RESTRICTED TO
1 OF 1		A		-