

10 9 8 7 6 5 4 3 2 1

F

E

D

C

B

A

F

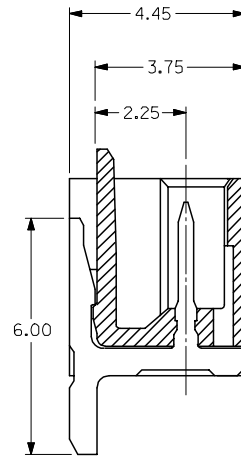
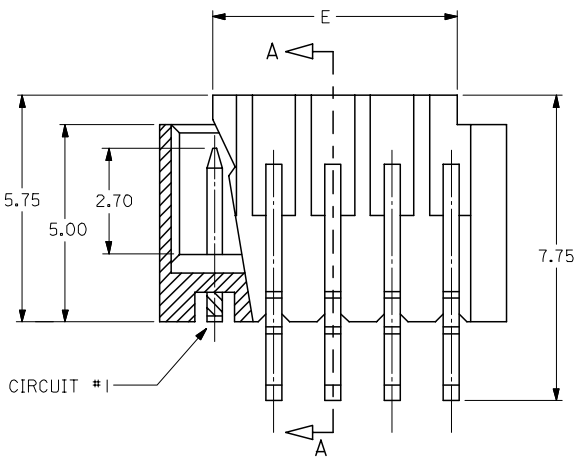
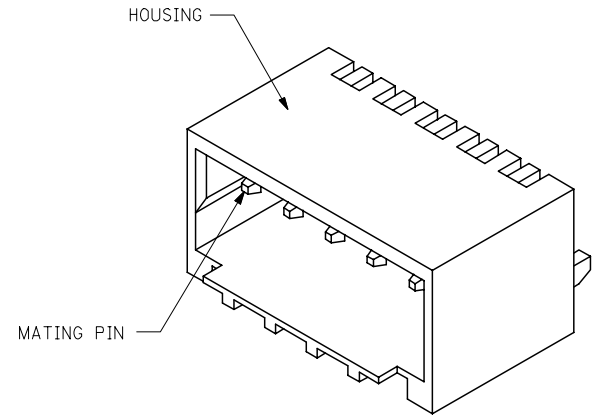
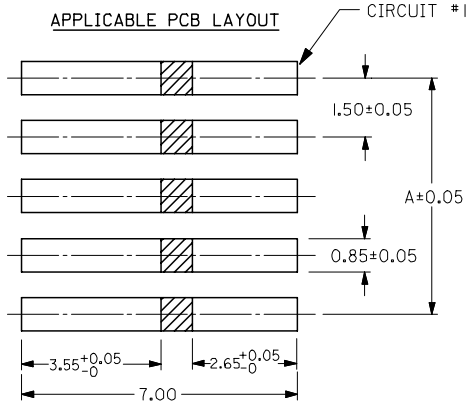
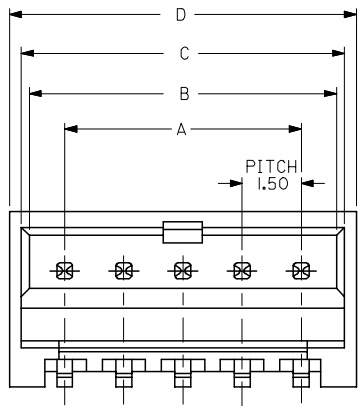
E

D

C

B

A



SECTION A-A

NOTES:

- MATERIALS:
HOUSING : GLASS-FILLED NYLON (PA46), UL RATED 94V-0, COLOR: BEIGE
PINS: BRASS ALLOY, C26000
- PLATING: 2.54MM MIN. TIN/LEAD OR TIN OVER 1.27MM MIN. NICKEL.
- DRAWING SHOWS PLUG WITH 5 CIRCUITS.
- HEADER TO BE USED WITH CRIMP HOUSING, P/N 87439 AND CRIMP TERMINAL, P/N 87421

UPDATE REVISION	DESCRIPTION
EC NO: S2005-0714	2005/10/19
DRWN:KSEE	2005/10/19
CHKD:BLHOW	2005/11/05
APPR:PTLIM	
C1	REV

QUALITY SYMBOLS	▽=0
	∇=0

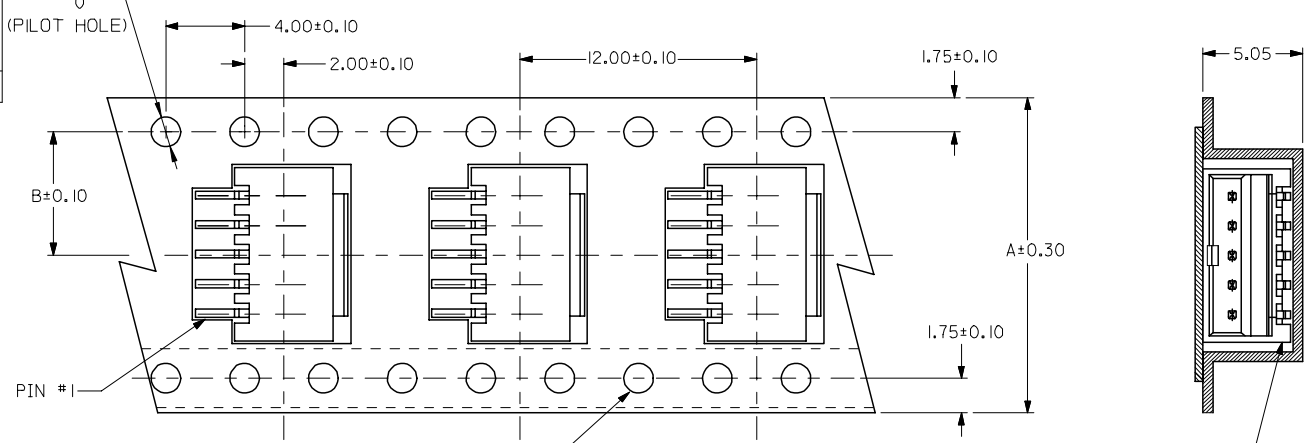
GENERAL TOLERANCES (UNLESS SPECIFIED)	mm	INCH
	4 PLACES ± ---	± ---
	3 PLACES ± ---	± ---
	2 PLACES ± 0.20	± ---
	1 PLACE ± ---	± ---
	ANGULAR ± 3 °	
DRAFT WHERE APPLICABLE MUST REMAIN WITHIN DIMENSIONS		

DIMENSION STYLE		SCALE	DESIGN UNITS	THIRD ANGLE PROJECTION
MM ONLY		NTS	METRIC	
DRAWN BY	DATE	TITLE		
KCLING	1994/04/08	SALES DRAWING		
CHECKED BY	DATE	1.50MM PITCH, W-T-B		
SKTOH	1994/04/21	HEADER, R/A, SMT		
APPROVED BY	DATE	MOLEX INCORPORATED		
ROYWONG	1994/04/24			
MATERIAL NO.	DOCUMENT NO.	SHEET NO.		
SEE TABLE	SD-87438-**31	1 OF 3		
SIZE A3	THIS DRAWING CONTAINS INFORMATION THAT IS PROPRIETARY TO MOLEX INCORPORATED AND SHOULD NOT BE USED WITHOUT WRITTEN PERMISSION			

9 8 7 6 5 4 3 2 1

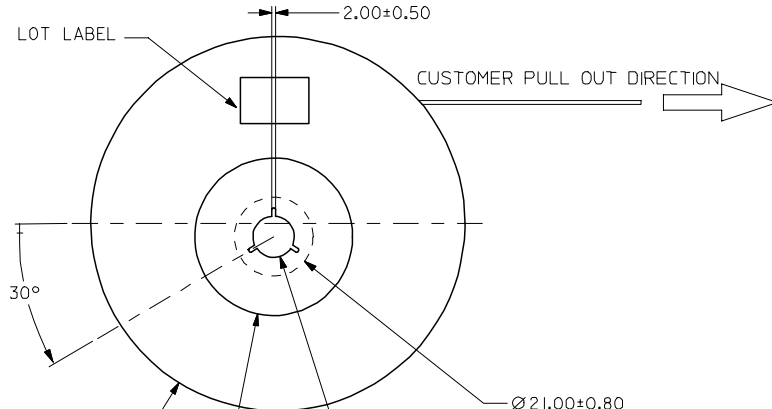
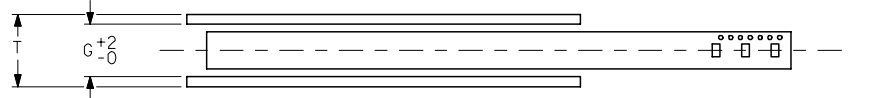
15	44	20.20	100	44.40	50.40
11, 12, 13, 14	32	14.20	100	32.40	38.40
7, 8, 9, 10	24	11.50	100	24.40	30.40
2, 3, 4, 5, 6	16	7.50	100	16.40	22.40
CIRCUIT SIZE	A	B	N	G	T MAX

EMBOSSED CARRIER TAPE PACKING DETAILS



P/N: 87438-***31

REEL DETAILS



NOTES:

- LEADER AND TRAILER TAPE
160MIN. TOP TAPE TRAILER
390 MIN TOP TAPE
160MIN. TAIL PART (EMPTY)
230MIN. LEADER PART (EMPTY)
PULL OUT DIRECTION
- PEELING OFF FORCE OF THE TOP TAPE: 20-80gf.
(PEELING DIRECTION AS SHOWN IN FOLLOWING FIGURE)
15° MAX.
PEEL OFF DIRECTION
PULL OUT DIRECTION
- PACKAGING STANDARD IS AS PER EIA-481.
- TAPE & REEL QUANTITY = 1000PCS/REEL
- THE TAPE IS TREATED FOR ANTI-STATIC

ADD LEADER & TRAILER	2005/10/19	2005/10/28
EC NO: S2005-0714	2005/10/19	2005/10/28
DRWN:KSEE	CHKD:BLW	APPR:PTLIM

QUALITY SYMBOLS	▽=0
	▽=0

GENERAL TOLERANCES (UNLESS SPECIFIED)	mm	INCH
4 PLACES	± ---	± ---
3 PLACES	± ---	± ---
2 PLACES	± 0.20	± ---
1 PLACE	± ---	± ---
ANGULAR ± 3°		
DRAFT WHERE APPLICABLE MUST REMAIN WITHIN DIMENSIONS		

DIMENSION STYLE	MM ONLY
DRAWN BY	KCLING
DATE	1994/04/08
CHECKED BY	SKTOH
DATE	1994/04/21
APPROVED BY	ROYWONG
DATE	1994/04/24
MATERIAL NO.	SEE TABLE

SCALE	NTS	DESIGN UNITS	METRIC	THIRD ANGLE PROJECTION
SALES DRAWING 1.50MM PTICH, W-T-B HEADER, R/A, SMT				
MOLEX INCORPORATED				SHEET NO. 3 OF 3
DOCUMENT NO. SD-87438-***31				
THIS DRAWING CONTAINS INFORMATION THAT IS PROPRIETARY TO MOLEX INCORPORATED AND SHOULD NOT BE USED WITHOUT WRITTEN PERMISSION				