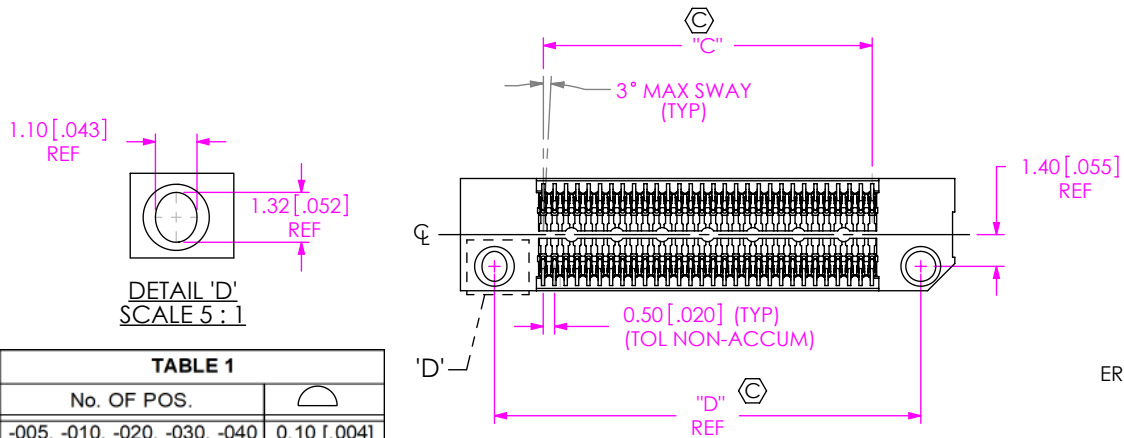
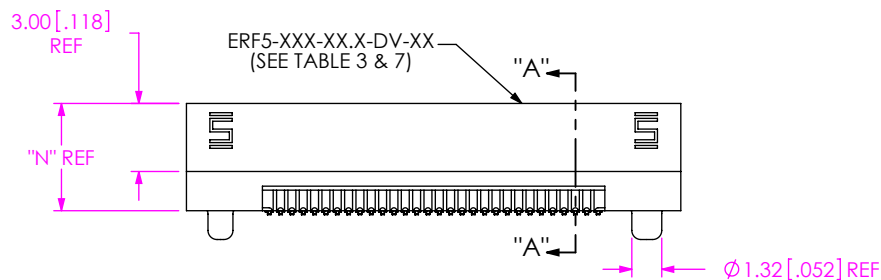
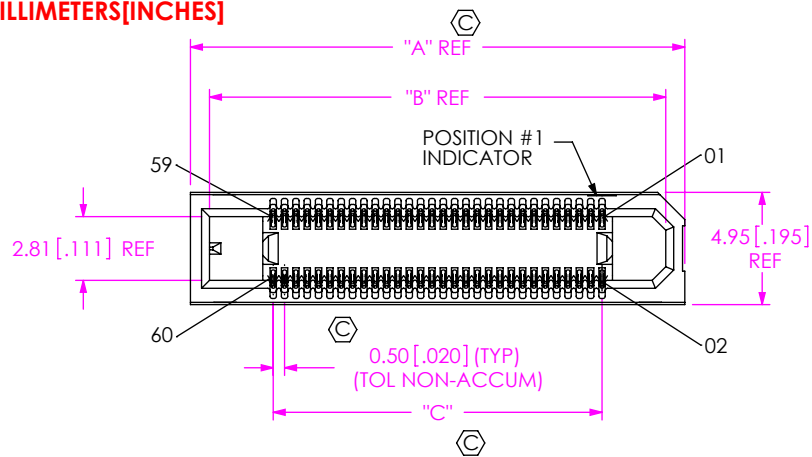


DO NOT  
SCALE FROM  
THIS PRINT



DETAIL 'D'  
SCALE 5 : 1

| TABLE 1                      |              |
|------------------------------|--------------|
| No. OF POS.                  |              |
| -005, -010, -020, -030, -040 | 0.10 [0.004] |
| -050, -060, -070, -075       | 0.13 [0.005] |

NOTES:

- REPRESENTS A CRITICAL DIMENSION.
- MAXIMUM BURR ALLOWANCE: 0.038 [0.015]
- MINIMUM CONTACT PUSHOUT FORCE: 1.6 N [4 LB];  
MINIMUM WELD TAB PUSHOUT FORCE: 4.45 N [1 LB];  
MINIMUM LATCH PUSHOUT FORCE: 2.25 N [0.51 LB].
- ORDERS WILL BE PACKAGED ACCORDING TO THE SAMTEC PACKAGING EFFICIENCY STANDARDS (SPES) FOUND ON WWW.SAMTEC.COM.
- ATTACH LABEL TO EACH REEL.

ERF5-XXX-XX.X-X-DV-XX-X-XR

No OF POSITIONS  
(PER ROW)  
-005, -010, -020,  
-030, -040, -050,  
-060, -070, -075

LEAD STYLE  
-05.0 = 5MM  
-07.0 = 7MM

PLATING SPECIFICATION  
-L: 10µ" SELECTIVE GOLD IN  
CONTACT AREA, MATTE TIN TAIL  
-S: 30µ" SELECTIVE GOLD IN  
CONTACT AREA, MATTE TIN TAIL

ROW SPECIFICATION  
-DV: DOUBLE VERTICAL

TAPE & REEL (SEE NOTES 4 & 5)  
-TR: TAPE & REEL  
-FR: FULL REEL QTY TAPE & REEL

PICK & PLACE OPTION  
-K: POLYIMIDE FILM

OPTION  
-FL: FRICTION LOCK (OPTION  
INCLUDES A WELD TAB  
(ONLY AVAILABLE UP TO 30 POSITIONS)  
(FOR MATING WITH ERM5...DV...-FL)  
-WT: WELD TAB  
-L: LATCH (NOT AVAILABLE WITH  
-FL OR -WT OPTIONS)  
(ONLY AVAILABLE WITH  
-020, -030, & -040 POSITIONS  
AND -05.0 LEAD STYLE)

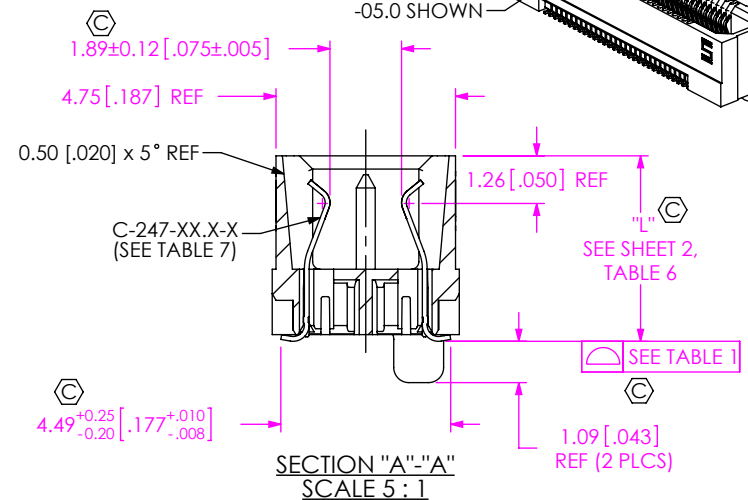
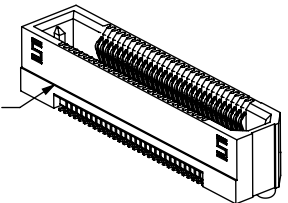


FIG 1  
ERF5-030-05.0-X-DV-XX-XR SHOWN

| TABLE 2 (REF)         |                 |        |        |
|-----------------------|-----------------|--------|--------|
| STACK HEIGHT          |                 |        |        |
| ERF5<br>LEAD<br>STYLE | ERM5 LEAD STYLE |        |        |
|                       |                 | -02.0  | -04.0  |
| -05.0                 | 7.0MM           | 9.0MM  | 10.0MM |
| -07.0                 | 9.0MM           | 11.0MM | 12.0MM |

F:\DWG\MISC\MKTG\ERF5-XXX-XX.X-X-DV-XX-X-XR-MKT.SLDDRW

UNLESS OTHERWISE SPECIFIED,  
DIMENSIONS ARE IN  
MILLIMETERS [INCHES].  
TOLERANCES ARE:  
DECIMALS ANGLES  
X.X: ±0.3 [0.1]  
X.XX: ±0.13 [0.005]  
X.XXX: ±0.050 [0.0020]

PROPRIETARY NOTE  
THIS DOCUMENT CONTAINS CONFIDENTIAL AND  
PROPRIETARY INFORMATION AND ALL DESIGN,  
MANUFACTURING, REPRODUCTION, USE, PATENT RIGHTS  
AND SALES RIGHTS ARE EXPRESSLY RESERVED BY SAMTEC,  
INC. THIS DOCUMENT SHALL NOT BE DISCLOSED, IN WHOLE  
OR PART, TO ANY UNAUTHORIZED PERSON OR ENTITY NOR  
REPRODUCED, TRANSFERRED OR INCORPORATED IN ANY  
OTHER PROJECT IN ANY MANNER WITHOUT THE EXPRESS  
WRITTEN CONSENT OF SAMTEC, INC.

MATERIAL: DO NOT SCALE DRAWING SHEET SCALE: 2:1  
INSULATOR: LCP, COLOR: BLACK  
CONTACT: BeCu

DESCRIPTION:  
0.5MM EDGE RATE SOCKET ASSEMBLY  
DWG. NO.  
ERF5-XXX-XX.X-X-DV-XX-X-XR  
BY: CLAY W 09-23-2010 SHEET 1 OF 4



520 PARK EAST BLVD, NEW ALBANY, IN 47150  
PHONE: 812-944-6733 FAX: 812-948-5047  
e-Mail info@SAMTEC.com code 55322

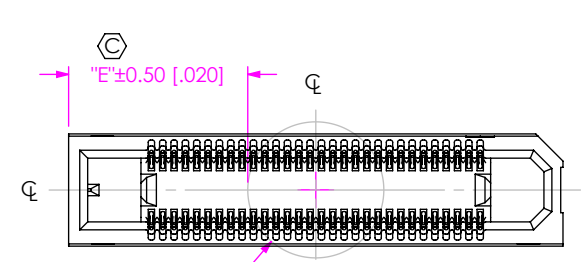
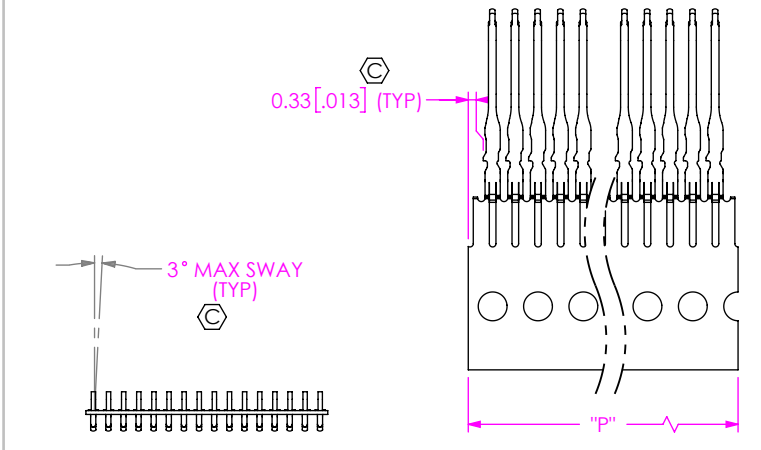
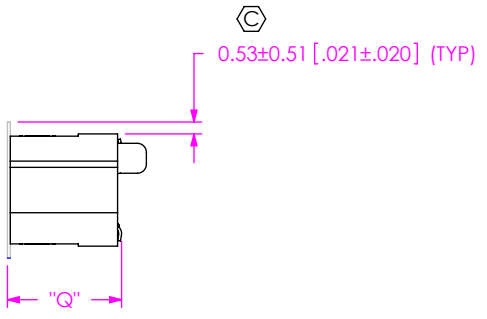


FIG 2  
-K OPTION  
(USE K-DOT-.236-.343-.005)  
ERF5-030-05.0-X-DV-K-XR SHOWN  
Ø6.00 [.236] REF

| LEAD STYLE | "Q"          | "L"          | "N"          |
|------------|--------------|--------------|--------------|
| -05.0      | 5.03 [0.198] | 4.91 [0.193] | 4.73 [0.186] |
| -07.0      | 7.03 [0.277] | 6.91 [0.272] | 6.73 [0.265] |



IN PROCESS 1  
CUT C-247-XX.X-X CONTACT COMBS  
(ALL TAILS SAME DIRECTION)

| POSITION | "P"           |
|----------|---------------|
| -005     | 3.00 [0.118]  |
| -010     | 5.50 [0.216]  |
| -020     | 10.50 [0.413] |
| -030     | 15.50 [0.610] |
| -040     | 20.50 [0.807] |
| -050     | 25.50 [1.004] |
| -060     | 30.50 [1.201] |
| -070     | 35.50 [1.398] |
| -075     | 38.00 [1.496] |

| POSITION | "A"           | "B"           | "C"           | "D"           |
|----------|---------------|---------------|---------------|---------------|
| -005     | 9.30 [0.366]  | 7.62 [0.300]  | 2.00 [0.079]  | 6.30 [0.248]  |
| -010     | 11.80 [0.465] | 10.12 [0.398] | 4.50 [0.177]  | 8.80 [0.346]  |
| -020     | 16.80 [0.661] | 15.12 [0.595] | 9.50 [0.374]  | 13.80 [0.543] |
| -030     | 21.80 [0.858] | 20.12 [0.792] | 14.50 [0.571] | 18.80 [0.740] |
| -040     | 26.80 [1.055] | 25.12 [0.989] | 19.50 [0.768] | 23.80 [0.937] |
| -050     | 31.80 [1.252] | 30.12 [1.186] | 24.50 [0.965] | 28.80 [1.134] |
| -060     | 36.80 [1.449] | 35.12 [1.383] | 29.50 [1.161] | 33.80 [1.331] |
| -070     | 41.80 [1.646] | 40.12 [1.580] | 34.50 [1.358] | 38.80 [1.528] |
| -075     | 44.30 [1.744] | 42.62 [1.678] | 37.00 [1.457] | 41.30 [1.626] |

| POSITION | "E"   |         |       |         |       |         |
|----------|-------|---------|-------|---------|-------|---------|
|          | -K    |         | -K-WT |         | -K-FL |         |
| -005     | 1.65  | [0.065] | 3.15  | [0.124] | 3.15  | [0.124] |
| -010     | 2.90  | [0.114] | 4.40  | [0.173] | 4.40  | [0.173] |
| -020     | 5.40  | [0.213] | 6.90  | [0.271] | 6.90  | [0.271] |
| -030     | 7.90  | [0.311] | 9.40  | [0.370] | 9.40  | [0.370] |
| -040     | 10.40 | [0.409] | 11.90 | [0.469] |       |         |
| -050     | 12.90 | [0.508] | 14.40 | [0.567] |       |         |
| -060     | 15.40 | [0.606] | 16.90 | [0.665] |       |         |
| -070     | 17.90 | [0.705] | 19.40 | [0.764] |       |         |
| -075     | 19.15 | [0.754] | 20.65 | [0.813] |       |         |

F:\DWG\MISC\MKTG\ERF5-XXX-XX.X-X-DV-XX-X-XR-MKT.SLDDRW

**PROPRIETARY NOTE**  
THIS DOCUMENT CONTAINS CONFIDENTIAL AND PROPRIETARY INFORMATION AND ALL DESIGN, MANUFACTURING, REPRODUCTION, USE, PATENT RIGHTS AND SALES RIGHTS ARE EXPRESSLY RESERVED BY SAMTEC, INC. THIS DOCUMENT SHALL NOT BE DISCLOSED, IN WHOLE OR PART, TO ANY UNAUTHORIZED PERSON OR ENTITY NOR REPRODUCED, TRANSFERRED OR INCORPORATED IN ANY OTHER PROJECT IN ANY MANNER WITHOUT THE EXPRESS WRITTEN CONSENT OF SAMTEC, INC.



520 PARK EAST BLVD, NEW ALBANY, IN 47150  
PHONE: 812-944-6733 FAX: 812-948-5047  
e-Mail info@SAMTEC.com code 55322

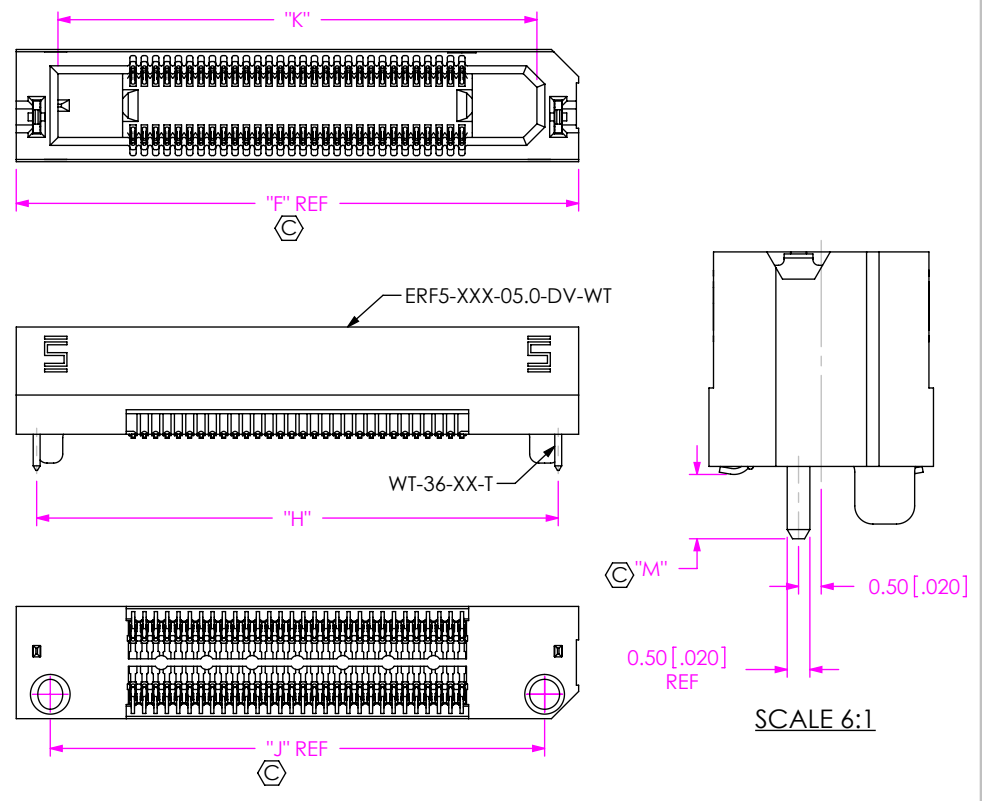
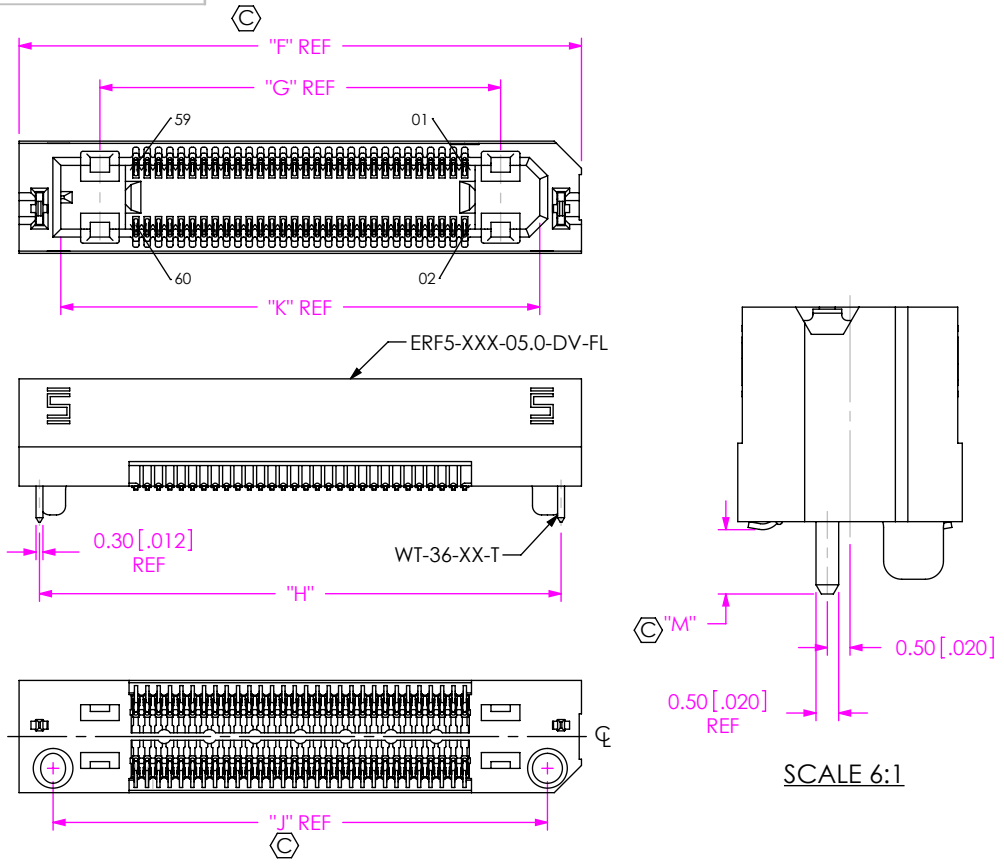
DO NOT SCALE DRAWING

SHEET SCALE: 2:1

DESCRIPTION:  
0.5MM EDGE RATE SOCKET ASSEMBLY

DWG. NO.  
ERF5-XXX-XX.X-X-DV-XX-X-XR

BY: CLAY W 09-23-2010 SHEET 2 OF 4



**TABLE 7**

| LEAD STYLE | ERF5-XXX-XX.X-DV-XX | C-247-XX.X-X | WT-36-XX-T | "M"          |
|------------|---------------------|--------------|------------|--------------|
| -05.0      | ERF5-XXX-05.0-DV-XX | C-247-05.0-X | WT-36-01-T | 1.42 [0.056] |
| -07.0      | ERF5-XXX-07.0-DV-XX | C-247-07.0-X | WT-36-03-T | 1.27 [0.050] |

**TABLE 4**

| POSITION | "F"           | "G"           | "H"           | "J"           | "K"          |
|----------|---------------|---------------|---------------|---------------|--------------|
| -005     | 12.30 [0.484] | 5.17 [0.204]  | 10.50 [0.413] | 9.30 [0.366]  | 8.62[0.340]  |
| -010     | 14.80 [0.583] | 7.67 [0.302]  | 13.00 [0.512] | 11.80 [0.465] | 11.12[0.438] |
| -020     | 19.80 [0.780] | 12.67 [0.499] | 18.00 [0.709] | 16.80 [0.661] | 16.12[0.635] |
| -030     | 24.80 [0.976] | 17.67 [0.696] | 23.00 [0.906] | 21.80 [0.858] | 21.12[0.831] |
| -040     | 29.80 [1.173] | 22.67 [0.893] | 28.00 [1.102] | 26.80 [1.055] | 26.12[1.028] |
| -050     | 34.80 [1.370] | 27.67 [1.089] | 33.00 [1.299] | 31.80 [1.252] | 31.12[1.225] |
| -060     | 39.80 [1.567] | 32.67 [1.286] | 38.00 [1.496] | 36.80 [1.449] | 36.12[1.422] |
| -070     | 44.80 [1.764] | 37.67 [1.483] | 43.00 [1.693] | 41.80 [1.646] | 41.12[1.619] |
| -075     | 47.30 [1.862] | 40.17 [1.581] | 45.50 [1.791] | 44.30 [1.744] | 43.62[1.717] |

**PROPRIETARY NOTE**  
 THIS DOCUMENT CONTAINS CONFIDENTIAL AND PROPRIETARY INFORMATION AND ALL DESIGN, MANUFACTURING, REPRODUCTION, USE, PATENT RIGHTS AND SALES RIGHTS ARE EXPRESSLY RESERVED BY SAMTEC, INC. THIS DOCUMENT SHALL NOT BE DISCLOSED, IN WHOLE OR PART, TO ANY UNAUTHORIZED PERSON OR ENTITY NOR REPRODUCED, TRANSFERRED OR INCORPORATED IN ANY OTHER PROJECT IN ANY MANNER WITHOUT THE EXPRESS WRITTEN CONSENT OF SAMTEC, INC.  
 DO NOT SCALE DRAWING  
 SHEET SCALE: 2:1

520 PARK EAST BLVD. NEW ALBANY, IN 47150  
 PHONE: 812-944-6733 FAX: 812-948-5047  
 e-Mail info@SAMTEC.com code 55322

DESCRIPTION:  
 0.5MM EDGE RATE SOCKET ASSEMBLY

DWG. NO.  
 ERF5-XXX-XX.X-X-DV-XX-XR

BY: CLAY W 09-23-2010 SHEET 3 OF 4

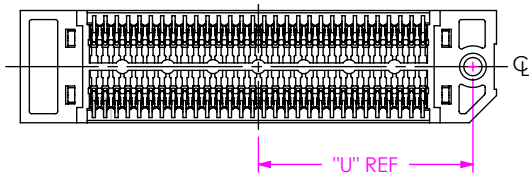
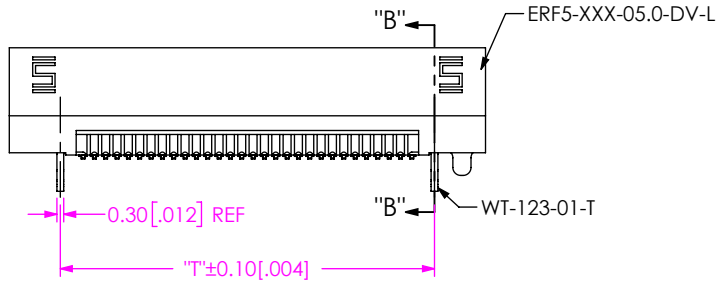
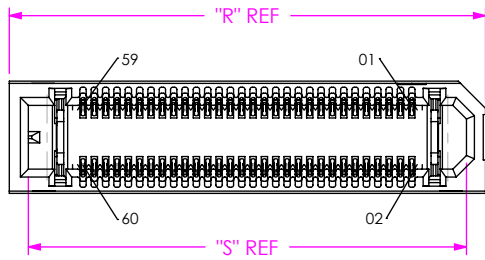
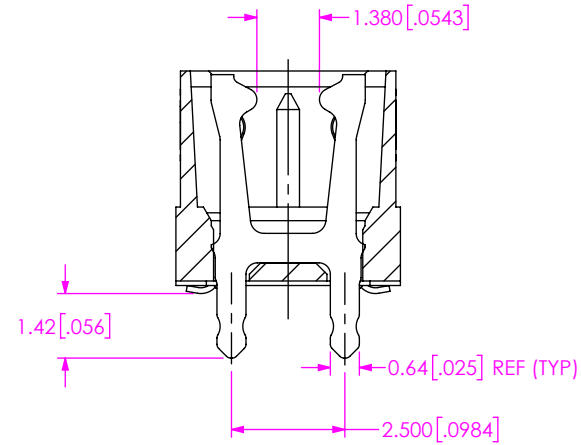


FIG 5  
ERF5-030-05.0-X-DV-L-XR SHOWN  
(SAME AS FIG 1 EXCEPT AS SHOWN)



SECTION "B"- "B"  
SCALE 6 : 1

| TABLE 5  |               |               |                 |               |
|----------|---------------|---------------|-----------------|---------------|
| POSITION | "R"           | "S"           | "T"             | "U"           |
| -020     | 16.00 [0.630] | 14.32 [0.564] | 11.500 [0.4528] | 6.96 [0.274]  |
| -030     | 21.00 [0.827] | 19.32 [0.761] | 16.500 [0.6496] | 9.46 [0.372]  |
| -040     | 26.00 [1.024] | 24.32 [0.957] | 21.500 [0.8465] | 11.96 [0.471] |

**PROPRIETARY NOTE**  
THIS DOCUMENT CONTAINS CONFIDENTIAL AND PROPRIETARY INFORMATION AND ALL DESIGN, MANUFACTURING, REPRODUCTION, USE, PATENT RIGHTS AND SALES RIGHTS ARE EXPRESSLY RESERVED BY SAMTEC, INC. THIS DOCUMENT SHALL NOT BE DISCLOSED, IN WHOLE OR PART, TO ANY UNAUTHORIZED PERSON OR ENTITY NOR REPRODUCED, TRANSFERRED OR INCORPORATED IN ANY OTHER PROJECT IN ANY MANNER WITHOUT THE EXPRESS WRITTEN CONSENT OF SAMTEC, INC.

DO NOT SCALE DRAWING

SHEET SCALE: 2:1



520 PARK EAST BLVD, NEW ALBANY, IN 47150  
PHONE: 812-944-6733 FAX: 812-948-5047  
e-Mail info@SAMTEC.com code 55322

DESCRIPTION:  
0.5MM EDGE RATE SOCKET ASSEMBLY

DWG. NO.  
ERF5-XXX-XX.X-X-DV-XX-X-XR

BY: CLAY W 09-23-2010 SHEET 4 OF 4