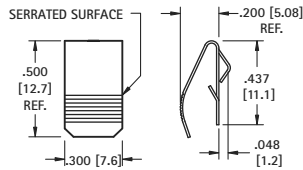


SLIDE-IN MOUNT CONTACTS

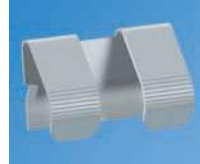
"AA" • "CR2" • "A" • "9V" • 17-19mm

• Press fit into housing groove

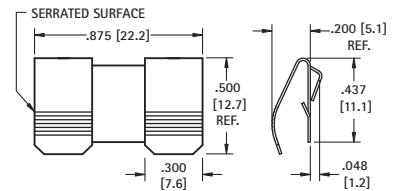


CAT. NO. 5205

MATERIAL: .012 (.30) Spring Steel, Nickel Plate

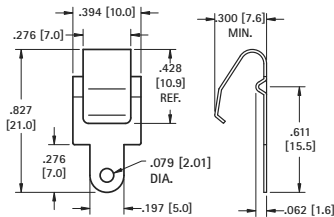


"AA"



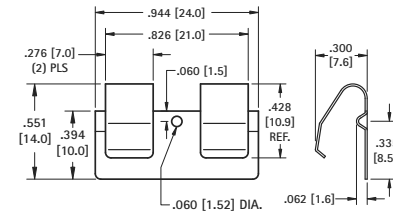
CAT. NO. 5206

MATERIAL: .012 (.30) Spring Steel, Nickel Plate



CAT. NO. 5209

MATERIAL: .012 (.30) Phosphor Bronze, Nickel Plate



CAT. NO. 5208

MATERIAL: .012 (.30) Phosphor Bronze, Nickel Plate

SLIDE-IN P.C. MOUNT CONTACTS

- Economical and reliable contacts
- Designed for direct placement onto PCB, no wire leads required
- Unique spring tension adjusts to variations in battery length

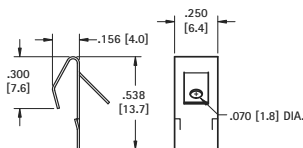
- Reliable spring tension assure low contact resistance and dependable connection
- Symmetrical design allows these contacts to function both as a positive and negative contacts

- Stainless steel contacts provide superior corrosion resistance

Refer to page 36 for Battery Contact Layout & Mounting Details

UNIVERSAL BATTERY SIZES

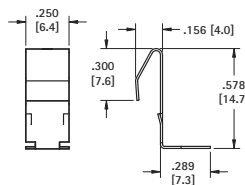
"AA" • "A" • 17-19mm • "C" • "D"



CAT. NO. 1107-1

MATERIAL: .012 (.30) Stainless Steel, Tin-Nickel Plate

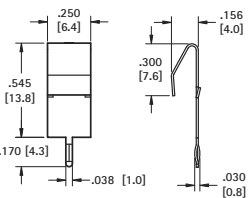
"AA" • "CR2" • "A" • 17-19mm



CAT. NO. 1016-1

MATERIAL: .012 (.30) Stainless Steel, Gold Plate

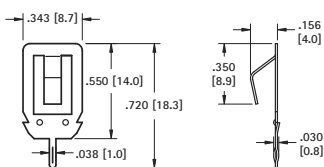
"AA" • "CR2" • "A" • 17-19mm



CAT. NO. 1017-1

MATERIAL: .012 (.30) Stainless Steel, Tin-Nickel Plate

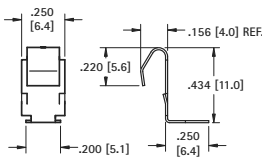
"AAA" • "N" • "AA" • "CR2" • "A"



CAT. NO. 108-2

MATERIAL: .012 (.30) Stainless Steel, Tin-Nickel Plate

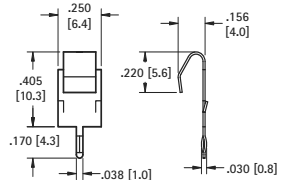
"AAAA" • "A23" • "A27" • "AAA" • "N"



CAT. NO. 1020-1

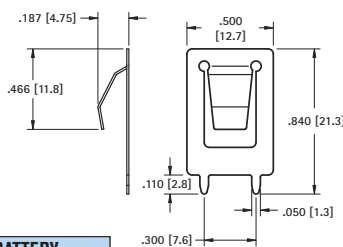
MATERIAL: .012 (.30) Stainless Steel, Gold Plate

"AAAA" • "A23" • "A27" • "AAA" • "N"



CAT. NO. 1021-1

MATERIAL: .012 (.30) Stainless Steel, Tin-Nickel Plate

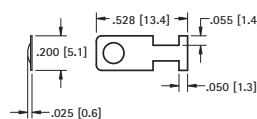


CAT. NO.	(L) Length	BATTERY REFERENCE
109-2	.840 (21.3)	"AA", "A", 17-19mm, "C"
109-3	1.000 (25.4)	20-33mm, "D"

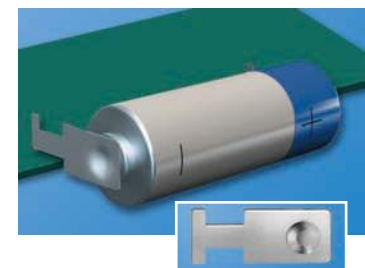
MATERIAL: .012 (.30) Spring Steel, Nickel Plate

"AAA" • "AAAA" • "N" • "12V"

- "Off-Board" edge mounting design frees up valuable board space



CAT. NO. 230-1



MATERIAL: .008 (.20) Spring Steel, Nickel Plate