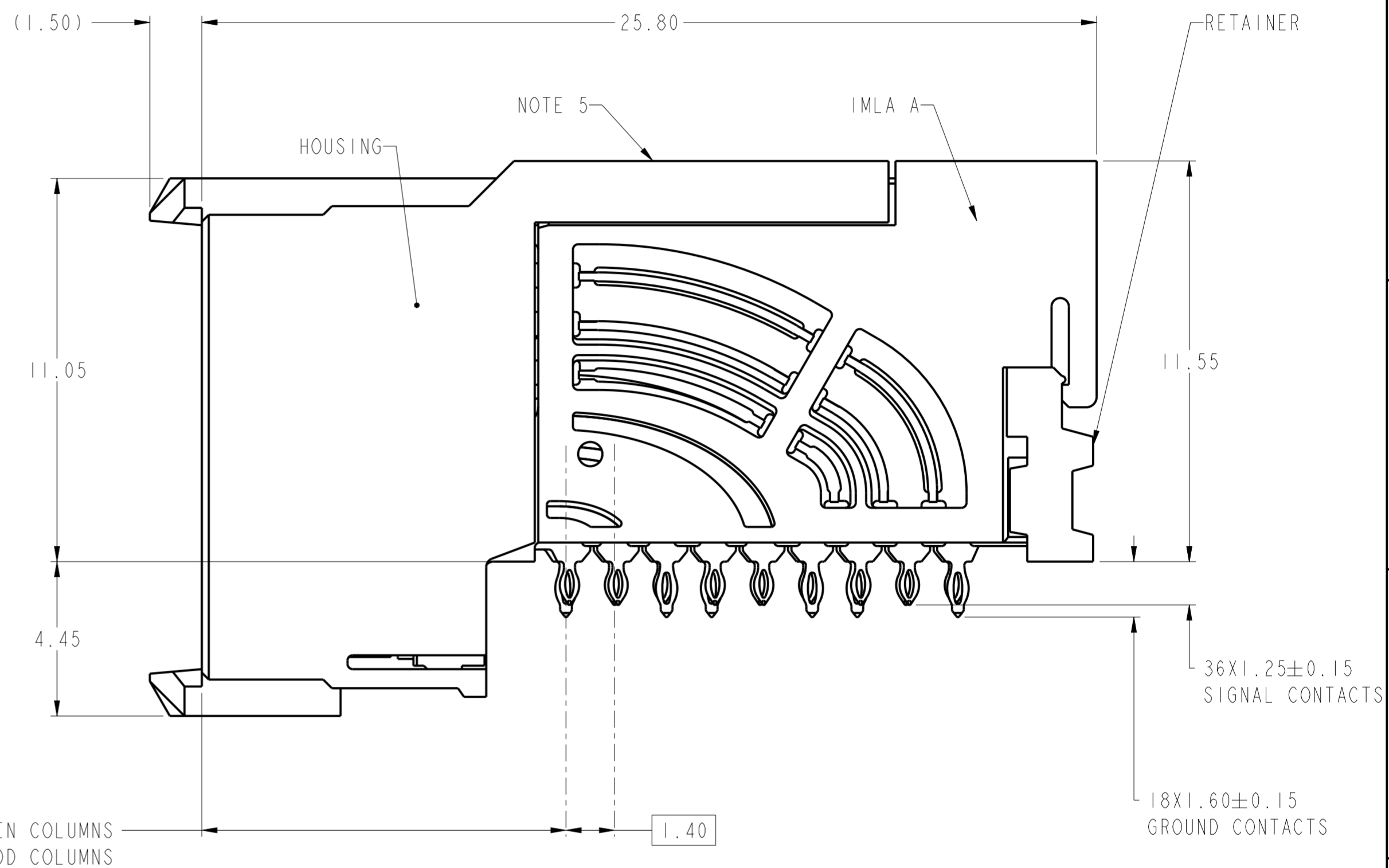
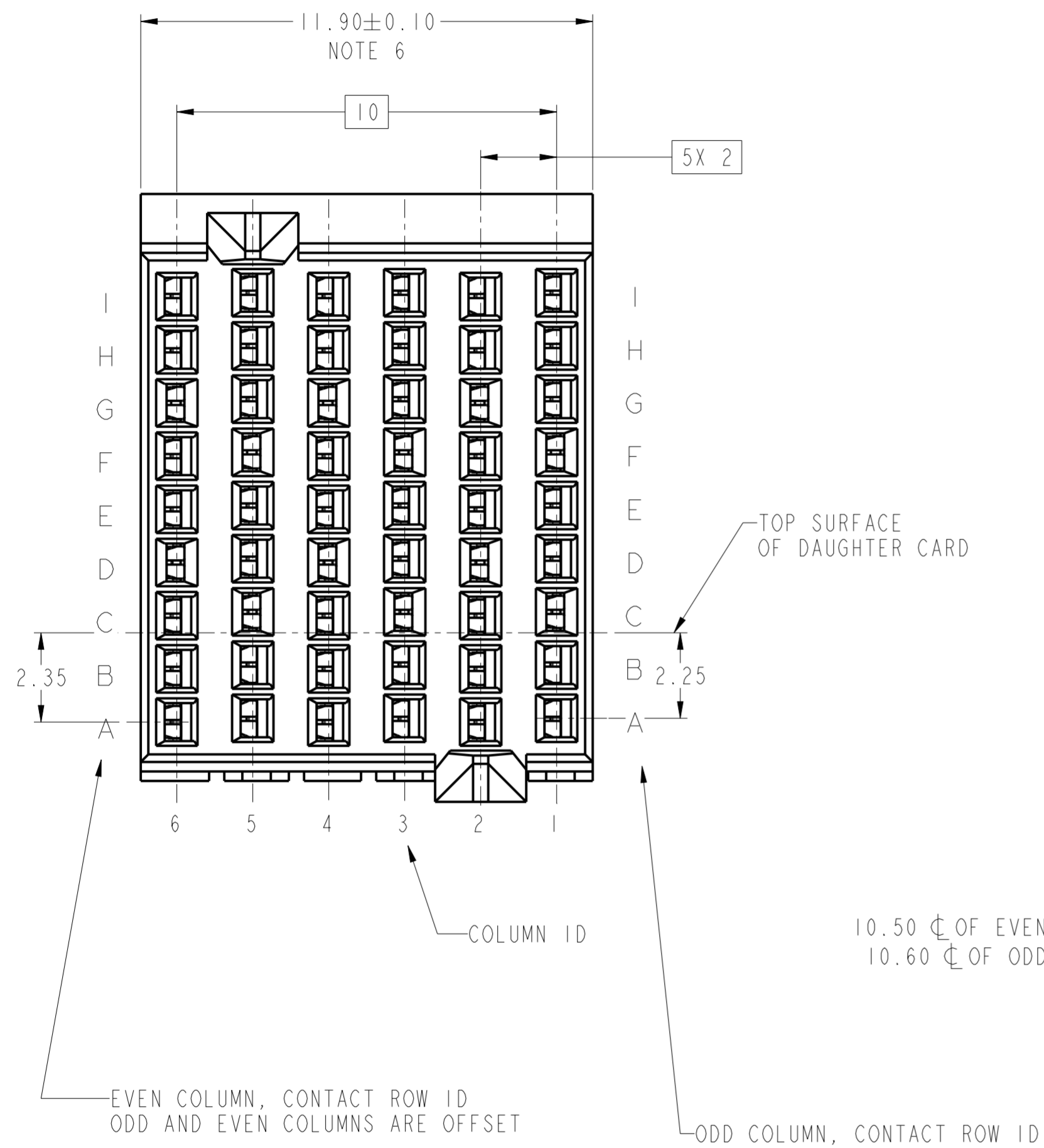


|                |                             |
|----------------|-----------------------------|
| PRODUCT NUMBER | PRESS-FIT TAIL PLATING TYPE |
| 10136585-101LF | TIN OVER NICKEL (LEAD FREE) |



|                                       |             |          |                |            |                |                        |           |                                               |           |          |
|---------------------------------------|-------------|----------|----------------|------------|----------------|------------------------|-----------|-----------------------------------------------|-----------|----------|
| spec ref                              | ---         | dr       | Tao Zhan       | 2015/09/21 | projection     | MM                     | size      | A2                                            | scale     | 1:1      |
| tolerance std                         | ASME Y14.5M | eng      | Art Lin        | 2016/10/27 | chr            | -                      | ecn no    | -                                             | rel level | Released |
| TOLERANCES UNLESS OTHERWISE SPECIFIED |             | appr     | Pei-Ming Zheng | 2016/10/27 | product family | AirMax VSE             | rel level | Released                                      |           |          |
| surface                               | -           | linear   | 0.X            | ±.3        | Amphenol FCI   |                        | title     | AIRMAX VS2 R.A. RECEPTACLE                    | dwg no    | 10136585 |
|                                       |             |          | 0.XX           | ±0.15      |                |                        |           | ASS'Y, 3 PAIR, 54 POS, 6 IMLA, 12MM, Small PF | rev       | A        |
|                                       |             |          | 0.XXX          | ±.050      |                |                        |           |                                               |           |          |
|                                       |             | angular  | 0°             | ±°         |                |                        |           |                                               |           |          |
|                                       |             | cat. no. |                |            |                | Product - Customer Drw |           | sheet 1 of 3                                  |           |          |

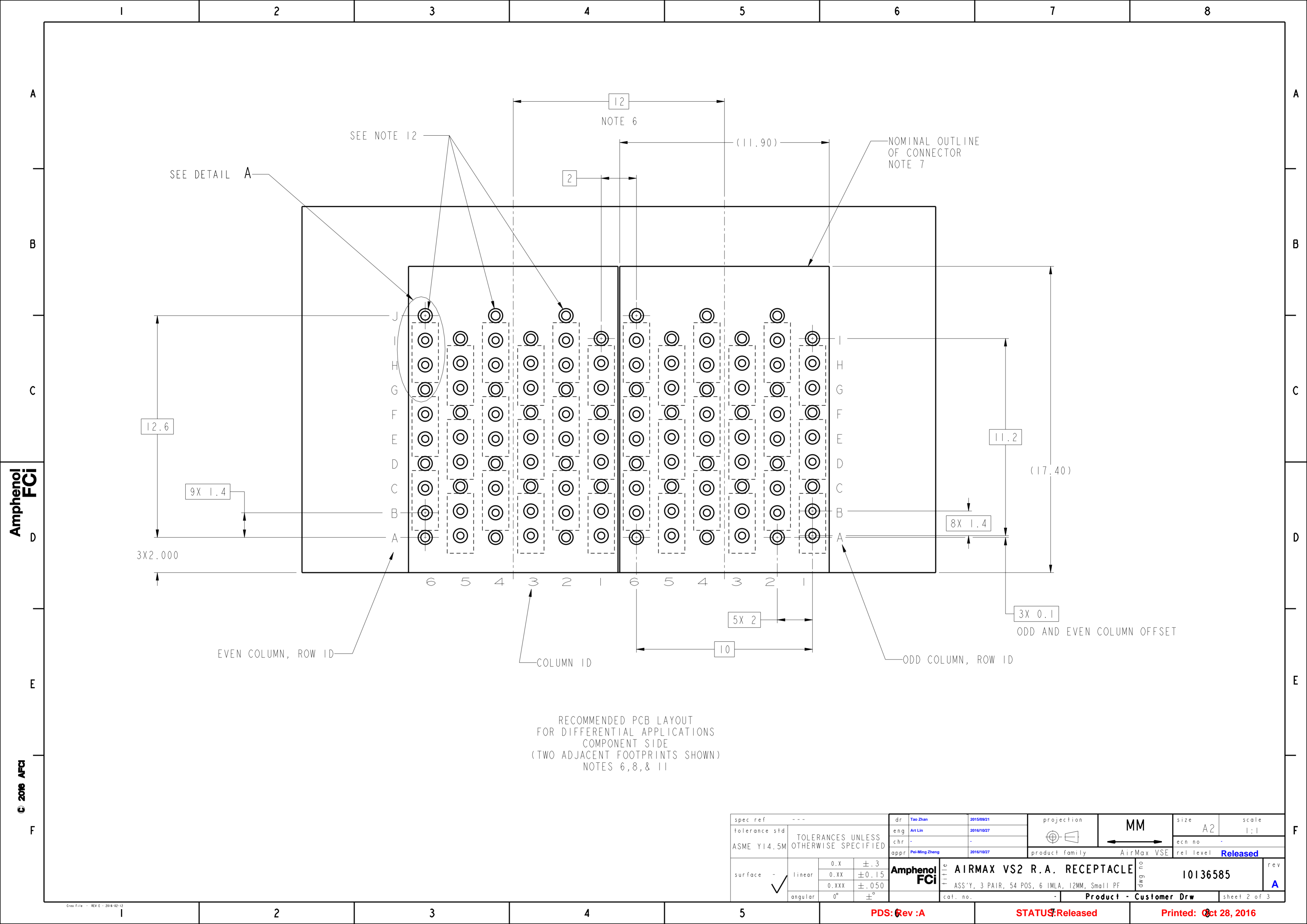
PDS: Rev :A

STATUS:Released

Printed: Oct 28, 2016

Amphenol FCI

© 2016 AFCE



12.6

9X 1.4

3X2.000

12  
NOTE 6

(11.90)

2

NOMINAL OUTLINE  
OF CONNECTOR  
NOTE 7

SEE DETAIL A

SEE NOTE 12

(17.40)

11.2

8X 1.4

3X 0.1

ODD AND EVEN COLUMN OFFSET

EVEN COLUMN, ROW ID

COLUMN ID

ODD COLUMN, ROW ID

5X 2

10

RECOMMENDED PCB LAYOUT  
FOR DIFFERENTIAL APPLICATIONS  
COMPONENT SIDE  
(TWO ADJACENT FOOTPRINTS SHOWN)  
NOTES 6, 8, & 11

|                                       |             |         |                |            |                                               |            |                            |          |                        |          |
|---------------------------------------|-------------|---------|----------------|------------|-----------------------------------------------|------------|----------------------------|----------|------------------------|----------|
| spec ref                              | ---         | dr      | Tao Zhan       | 2015/09/21 | projection                                    | MM         | size                       | A2       | scale                  | 1:1      |
| tolerance std                         | ASME Y14.5M | eng     | Art Lin        | 2016/10/27 | chr                                           | -          | ecn no                     | -        | rel level              | Released |
| TOLERANCES UNLESS OTHERWISE SPECIFIED |             | appr    | Pei-Ming Zheng | 2016/10/27 | product family                                | AirMax VSE | rel level                  | Released |                        |          |
| surface                               | ✓           | linear  | 0.X            | ±.3        | Amphenol FCI                                  |            | AIRMAX VS2 R.A. RECEPTACLE |          | cat. no.               | 10136585 |
|                                       |             |         | 0.XX           | ±0.15      | ASS'Y, 3 PAIR, 54 POS, 6 IMLA, 12MM, Small PF |            | rev                        | A        | Product - Customer Drw |          |
|                                       |             |         | 0.XXX          | ±.050      |                                               |            | sheet 2 of 3               |          |                        |          |
|                                       |             | angular | 0°             | ±°         |                                               |            |                            |          |                        |          |

Amphenol FCI

© 2016 APCI

A

B

C

D

E

F

A


B

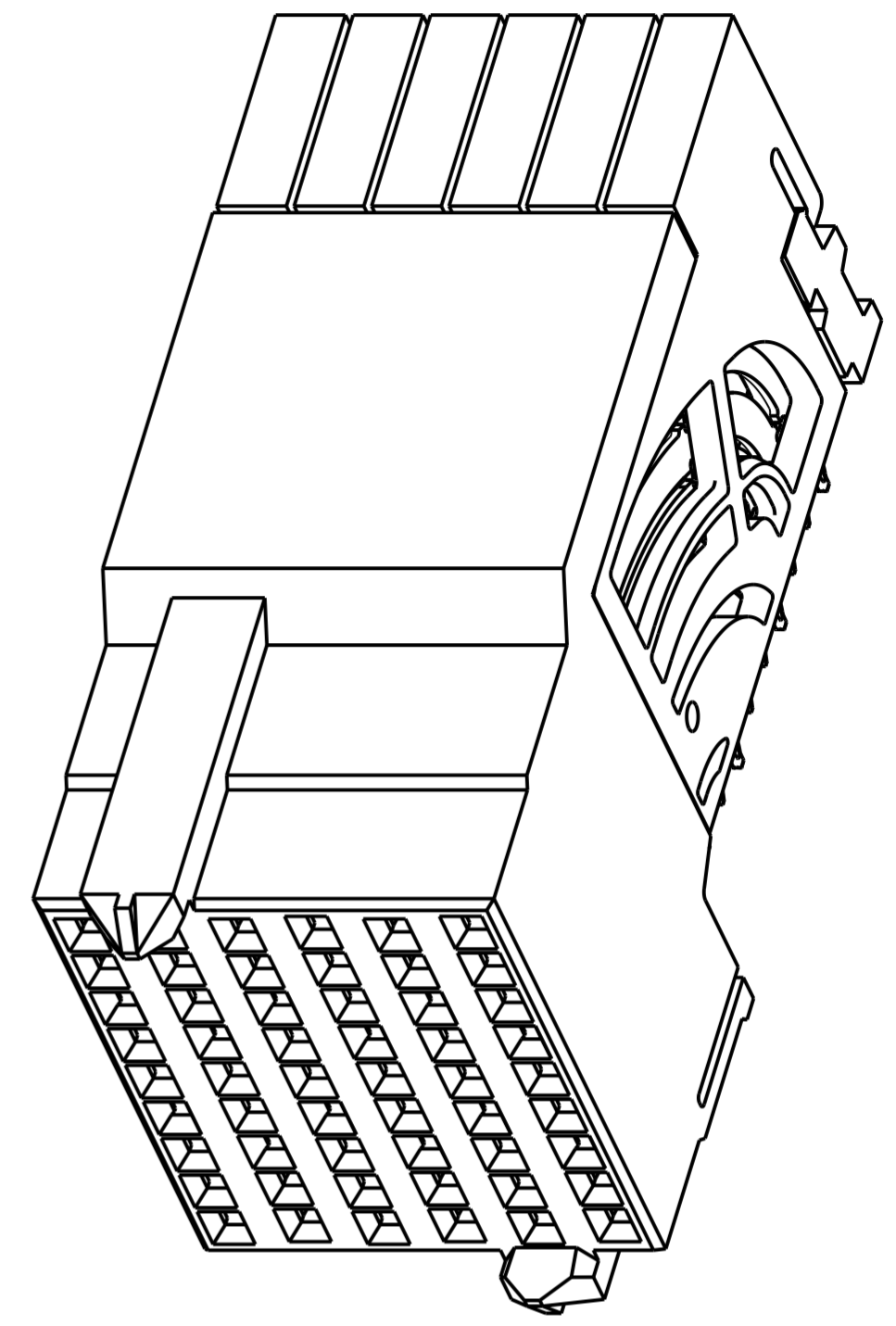
C

D

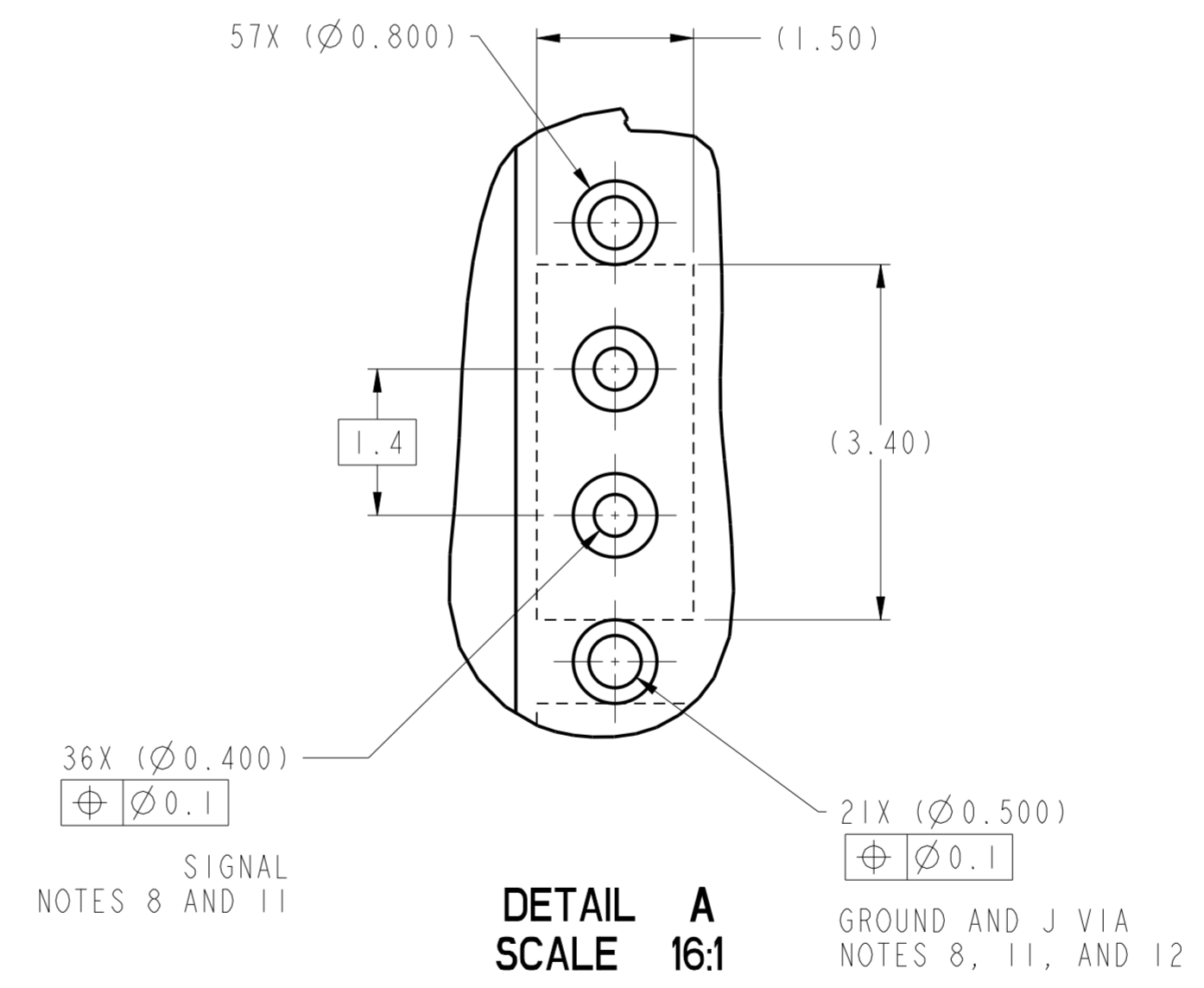
E

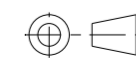
F

- 1 - CONNECTOR MATERIALS:  
HOUSING: HIGH TEMP THERMOPLASTIC, NATURAL, UL94-V0  
IMLA PLASTIC: HIGH TEMP THERMOPLASTIC, BLACK, UL94-V0  
CONTACT: COPPER ALLOY  
ORGANIZER: HIGH TEMP THERMOPLASTIC, WHITE, UL94-V0
- 2 - CONTACT PLATING:  
SEPARABLE INTERFACE:  
GXT PLUS PLATING, QUALIFIED TO MEET THE REQUIREMENTS OF FCI PRODUCT SPECIFICATION GS-12-0956 INCLUDING TELCORDIA GR-1217-CORE (NOVEMBER 1995) CENTRAL OFFICE TEST SEQUENCE  
  
PRESS-FIT TAILS: SEE TABLE
- 3 - PRODUCT SPECIFICATION: GS-12-0956
- 4 - APPLICATION SPECIFICATION: GS-20-0305.
- 5 - PRODUCT MARKING, (PART NUMBER & LOT CODE), ON THIS SURFACE.
- 6 - THE MINIMUM CENTERLINE SPACING BETWEEN ADJACENT MODULES IS 12.0 MM.
- 7 - CONNECTOR OUTLINE MAY BE SCREEN PRINTED ONTO CUSTOMER PCB TO BE USED AS A GUIDE FOR MANUAL CONNECTOR PLACEMENT.
- 8 - REFER TO CUSTOMER DRAWING 10104444 FOR INFORMATION ON PCB HOLE DIAMETERS AND PLATING OPTIONS
- 9 - LEAD FREE PRODUCT MEETS THE EUROPEAN UNION DIRECTIVES & OTHER COUNTRY REGULATIONS AS DESCRIBED IN GS-22-008
- 10 - PACKAGING MEETS GS-14-920 LEAD FREE LABELING SPECIFICATION.
- 11 - GROUND CONTACTS (C,F, AND I IN ODD COLUMNS AND A, D, AND G, EVEN COLUMNS) REQUIRE (Ø0.500) FINISHED HOLES. SIGNAL LOCATIONS REQUIRE (Ø0.400) FINISHED HOLES.
- 12 - THESE OUTER VIAS (J) ARE OPTIONAL. WHILE NO CONNECTOR EONS ARE PRESSED INTO THESE HOLES WE RECOMMEND (Ø0.500) FINISHED HOLES AT THESE LOCATIONS TO PROVIDE GROUND SYMMETRY THROUGH THE PCB.
- 13. A  SYMBOL WILL BE NEXT TO ANY DIMENSION, VIEW, OR NOTE, WHICH HAS BEEN MODIFIED WITH THE CURRENT DRAWING REVISION.



10136585-101LF



|                                       |             |         |          |            |                                                                                       |    |                        |            |                       |          |                                                                          |   |
|---------------------------------------|-------------|---------|----------|------------|---------------------------------------------------------------------------------------|----|------------------------|------------|-----------------------|----------|--------------------------------------------------------------------------|---|
| spec ref                              | ---         | dr      | Tao Zhan | 2015/09/21 | projection                                                                            | MM | size                   | A2         | scale                 | 4:1      |                                                                          |   |
| tolerance std                         | ASME Y14.5M | eng     | Art Lin  | 2016/10/27 |  | ←  | ecn no                 | -          | rel level             |          | Released                                                                 |   |
| TOLERANCES UNLESS OTHERWISE SPECIFIED |             | chr     | -        | apppr      |                                                                                       |    | Pai-Ming Zheng         | 2016/10/27 | product family        |          | AIRMAX VS2 R.A. RECEPTACLE ASS'Y, 3 PAIR, 54 POS, 6 IMLA, 12MM, Small PF |   |
| surface                               | ✓           | linear  | 0.X      | ±.3        | Amphenol FCI                                                                          |    | cat. no.               | 10136585   | dwg no                | 10136585 | rev                                                                      | A |
|                                       |             |         | 0.XX     | ±0.15      |                                                                                       |    | Product - Customer Drw |            | sheet 3 of 3          |          |                                                                          |   |
|                                       |             | angular | 0°       | ±°         |                                                                                       |    | STATUS: Released       |            | Printed: Oct 28, 2016 |          |                                                                          |   |

Amphenol FCI

© 2016 APCI