

REVISION Y

NOTES:

1. MIN. PUSHOUT FORCE: .5 lb.
2. PLANARITY TO BE WITHIN .006 [1.5].
3. Ⓞ REPRESENTS A CRITICAL DIMENSION FOR STATISTICAL PROCESS CONTROL.
4. TUBES ARE STANDARD PACKAGING.
5. ORDERS WILL BE PACKAGED ACCORDING TO THE SAMTEC PACKAGING EFFICIENCY STANDARDS (SPES) FOUND ON WWW.SAMTEC.COM.
6. ATTACH LABEL TO EACH REEL.

| DIMENSIONS ARE IN INCHES | | UNLESS OTHERWISE NOTED | | TOLERANCES ARE: | |
|--------------------------|-----------------------------|------------------------|--|-----------------|--|
| ONE PLACE DECIMALS ± .1 | THREE PLACE DECIMALS ± .005 | ANGLES ± 2° | | | |
| TWO PLACE DECIMALS ± .01 | FOUR PLACE DECIMALS ± .0020 | | | | |

TITLE: STAMPED & FORMED
DIP ASM.

DWG NO: ICF-XXX-XXX-X-XX
SHEET 1 OF 1

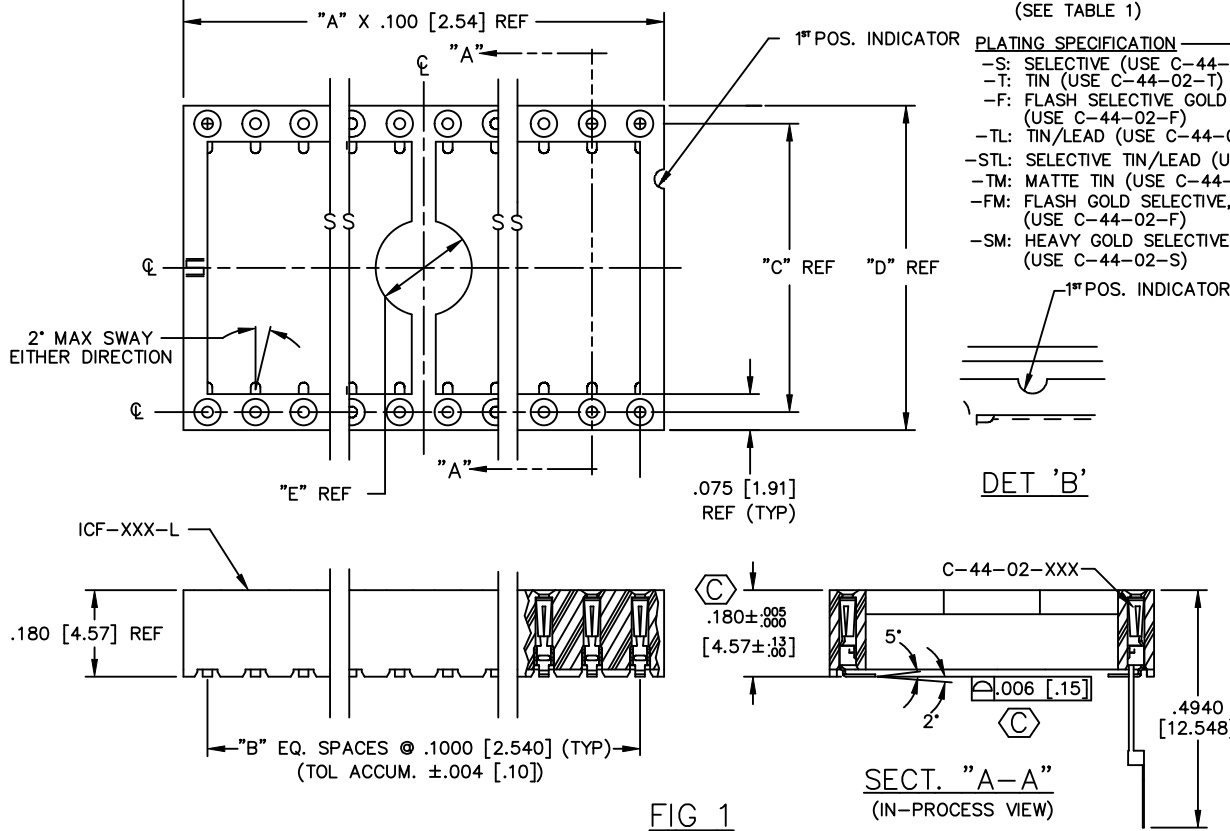


FIG 1

SECT. "A-A"
(IN-PROCESS VIEW)

| "X" | "XX" | "A" | "B" | "C" | "D" | "E" |
|-----|------|-----|-----|-------------------|-----------------|-----------------|
| 3 | 08 | 4 | 3 | .3000 [7.620] | .375 [9.53] | .200 [5.08] |
| | 14 | 7 | 6 | | | |
| | 16 | 8 | 7 | | | |
| | 18 | 9 | 8 | | | |
| | 20 | 10 | 9 | | | |
| | 22 | 11 | 10 | | | |
| | 24 | 12 | 11 | | | |
| 6 | 28 | 14 | 13 | .6000 [15.240] | .675 [17.15] | .400 [10.16] |
| | 24 | 12 | 11 | | | |
| | 28 | 14 | 13 | | | |
| | 32 | 16 | 15 | | | |
| | 40 | 20 | 19 | | | |
| | 48 | 24 | 23 | | | |

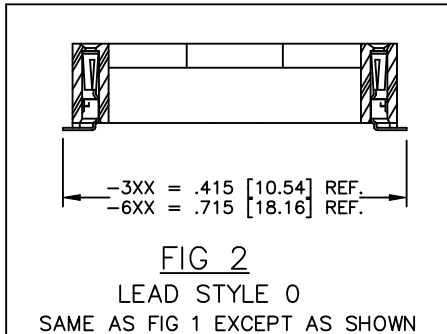
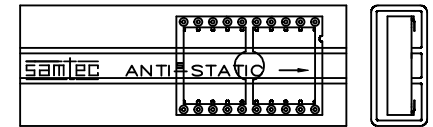


FIG 2
LEAD STYLE 0
SAME AS FIG 1 EXCEPT AS SHOWN

- ICF-XXX-XXX-X-XX
- ROW SPACING (SEE TABLE 1)
 - NO. OF CONTACTS (SEE TABLE 1)
 - PACKAGING
 - BLANK: TUBES (SEE NOTES 4 & 5)
 - TR: TAPE & REEL (SEE NOTES 5 & 6)
 - FR: FULL REEL QTY TAPE & REEL (SEE NOTES 5 & 6)
 - PLATING SPECIFICATION
 - S: SELECTIVE (USE C-44-02-S)
 - T: TIN (USE C-44-02-T)
 - F: FLASH SELECTIVE GOLD (USE C-44-02-F)
 - TL: TIN/LEAD (USE C-44-02-TL)
 - STL: SELECTIVE TIN/LEAD (USE C-44-02-STL)
 - TM: MATTE TIN (USE C-44-02-T)
 - FM: FLASH GOLD SELECTIVE, MATTE TIN TAIL (USE C-44-02-F)
 - SM: HEAVY GOLD SELECTIVE, MATTE TIN TAIL (USE C-44-02-S)
 - LEAD STYLES
 - I: TAILS IN - SEE FIG. 1
 - O: TAILS OUT - SEE FIG. 2

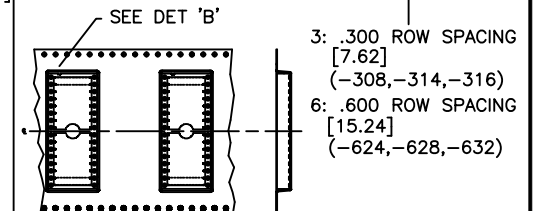
PACKAGE PARTS IN TUBE AS SHOWN (FIG 4)



| SERIES | LEAD STYLE | PACKAGING TUBE | PLUG |
|--------------|------------|----------------|-------|
| .300 [7.62] | I | PT-1-24-01-25 | TP-03 |
| .600 [15.24] | I | PT-1-24-02-25 | TP-03 |
| .300 [7.62] | 0 | PT-1-24-03-25 | TP-03 |
| .600 [15.24] | 0 | PT-1-24-04-25 | TP-03 |

PACKAGE PARTS IN TAPE & REEL AS SHOWN (FIG 5)

USE CT-ICF-XXX



SURFACE MOUNT LEADS TO BE FACE DOWN IN THE POCKET

PLOT SCALE: 1=2 EXISPROD/ASSEMBLY/DIP ICF-ASM

samtec

520 PARK EAST BLVD. NEW ALBANY, INDIANA 47150
PHONE (812) 944-6733 P.O. BOX 1147
CODE 55322

MADE BY GREG REIDINGER 3-21-91

ICF-XXX-XXX-X-XX
SHEET 1 OF 1

PROPRIETARY NOTE
THIS DOCUMENT CONTAINS INFORMATION CONFIDENTIAL AND PROPRIETARY TO SAMTEC INC. AND SHALL NOT BE REPRODUCED OR TRANSMITTED IN ANY FORM OR BY ANY MEANS, ELECTRONIC OR MECHANICAL, INCLUDING PHOTOCOPYING, RECORDING, OR BY ANY INFORMATION STORAGE AND RETRIEVAL SYSTEM, WITHOUT THE EXPRESS WRITTEN CONSENT OF SAMTEC INC.