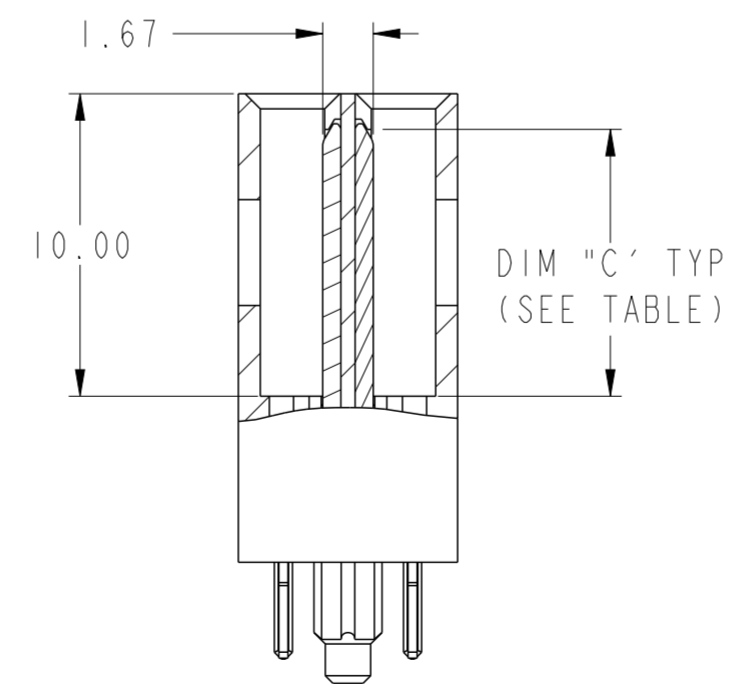


SECTION A-A
SCALE 4:1

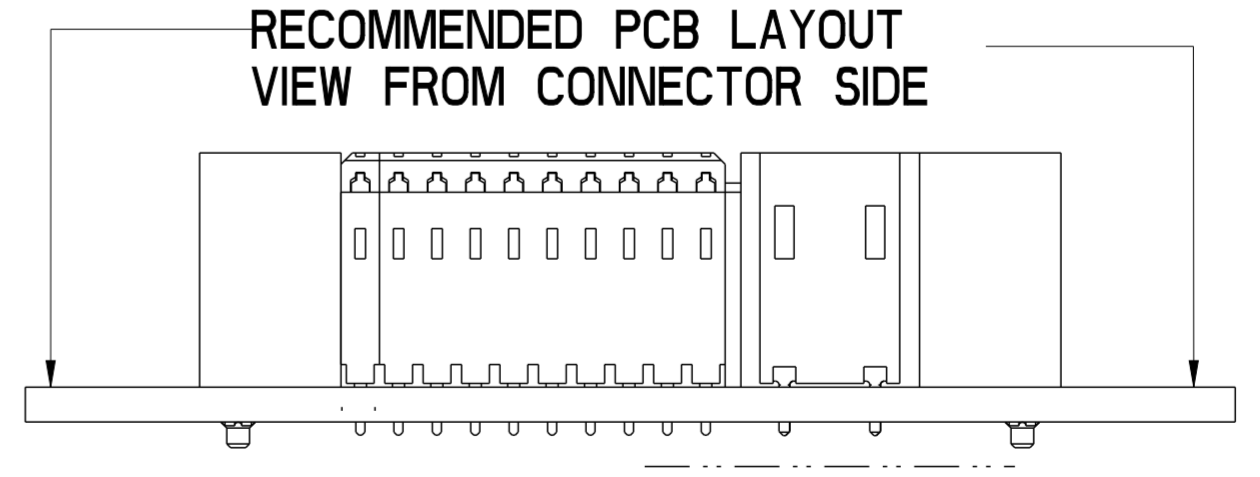
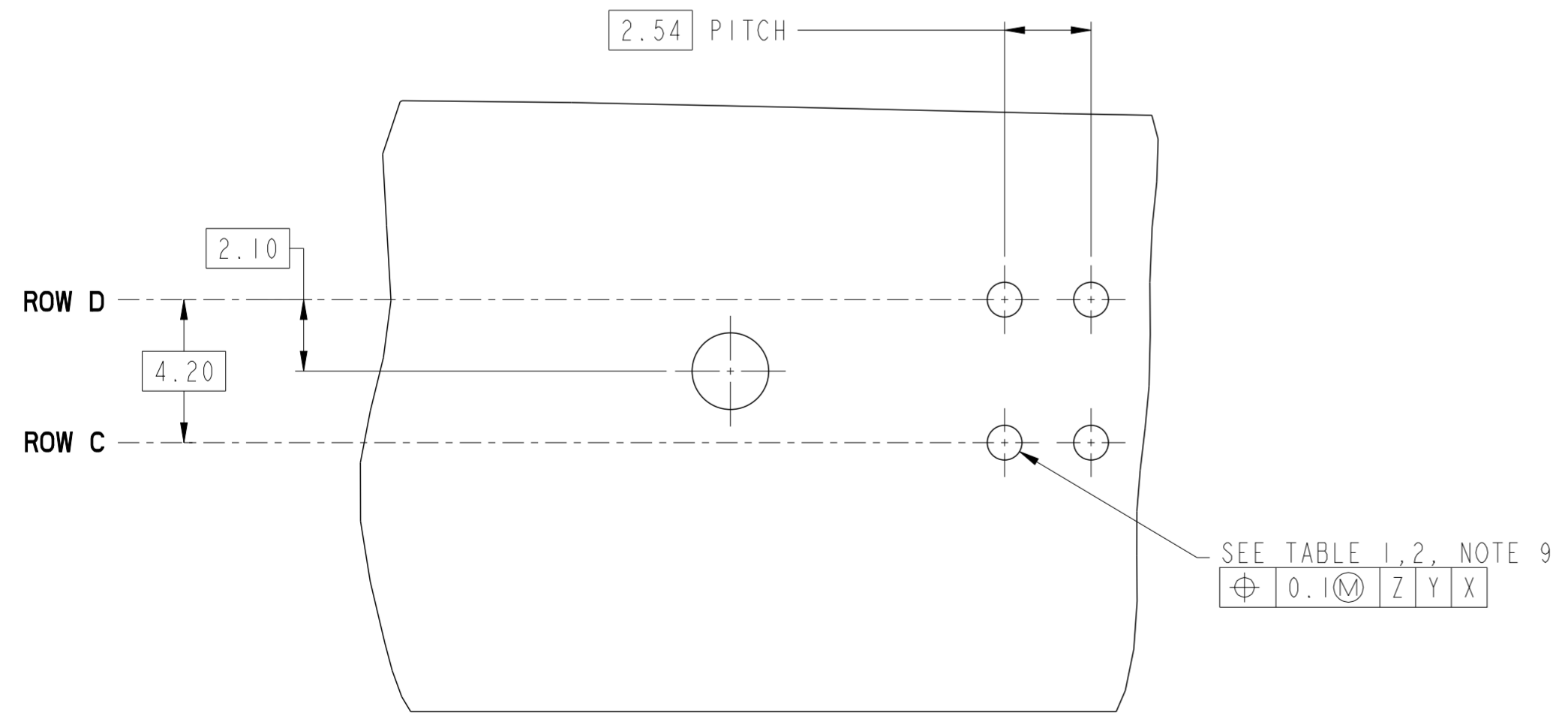
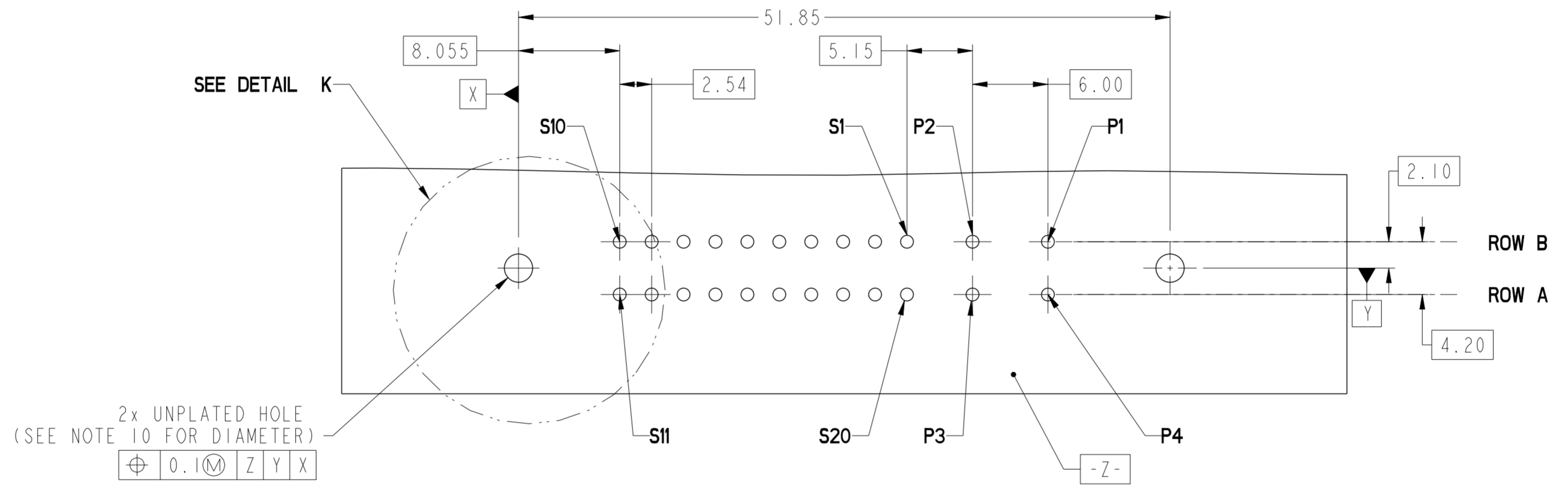


SECTION B-B
SCALE 4:1

spec ref	-	dr	Hai-Ling Liu	2015/02/05	projection	MM	size	A2	scale	3:1	
tolerance std	ASME Y14.5	eng	Hai-Ling Liu	2015/03/24			ecn no	-	rel level	Released	
TOLERANCES UNLESS OTHERWISE SPECIFIED		chr	-	app							Pai-Ming Zheng
surface	ASME Y14.5	linear	0.X	±0.5	0.XX	±0.25	0.XXX	±0.10	angular	0°	±2°
www.fci.com				title HPCE CTB VERT HEADER 4LP20S		cat. no. -		Product - Customer Drw		sheet 1 of 4	

CONTACT TYPE	TOP LAYER DESCRIPTION	TABLE 1 (HPCE / SOLDER TAILS) PLATED THROUGH-HOLE REQUIREMENTS				
		DRILLED HOLE DIAMETER	COPPER THICKNESS	TIN-LEAD THICKNESS	TIN THICKNESS	FINISHED HOLE DIAMETER
POWER & SIGNAL	TIN-LEAD	1.10-1.16 (1.15 DRILL)	0.025 - 0.050	0.005 - 0.015	--	0.94 - 1.10
	IMMERSION TIN	1.10-1.16 (1.15 DRILL)	0.025 - 0.050	--	0.9 - 1.5um	0.94 - 1.10
	COPPER (SEE NOTE 8)	1.10-1.16 (1.15 DRILL)	0.025 - 0.050	--	--	0.94 - 1.10

CONTACT TYPE	TOP LAYER DESCRIPTION	TABLE 2 (HPCE / PRESS-FIT TAILS) PLATED THROUGH-HOLE REQUIREMENTS				
		DRILLED HOLE DIAMETER	COPPER THICKNESS	TIN-LEAD THICKNESS	TIN THICKNESS	FINISHED HOLE DIAMETER
POWER	TIN-LEAD	8.10-8.60 (0.85 DRILL)	0.025 - 0.050	0.005 - 0.015	--	0.65 - 0.80
	IMMERSION TIN	8.10-8.60 (0.85 DRILL)	0.025 - 0.050	--	0.9 - 1.5um	0.70 - 0.80
	COPPER (SEE NOTE 8)	8.10-8.60 (0.85 DRILL)	0.025 - 0.050	--	--	0.70 - 0.80



SCALE 2:1

dr	Hai-Ling Liu	2015/02/05	projection	MM	size	A2	scale	3:1
eng	Hai-Ling Liu	2015/03/24			ecn no	-	rel level	Released
chr	-	-						
appr	Pei-Ming Zheng	2015/03/24	product family	HPCE	rel level	Released	rev	A
		title HPCE CTB VERT HEADER 4LP20S		dwg no 10133461		sheet 2 of 4		
www.fci.com		cat. no.		Product - Customer Drw		sheet 2 of 4		

DETAIL K
SCALE 6:1

Copyright FCI. FCI

PRODUCT PART NUMBER

10133461-□□□□□□ LF

BASE PART NUMBER

TAIL TYPE
A: STB
B: PF

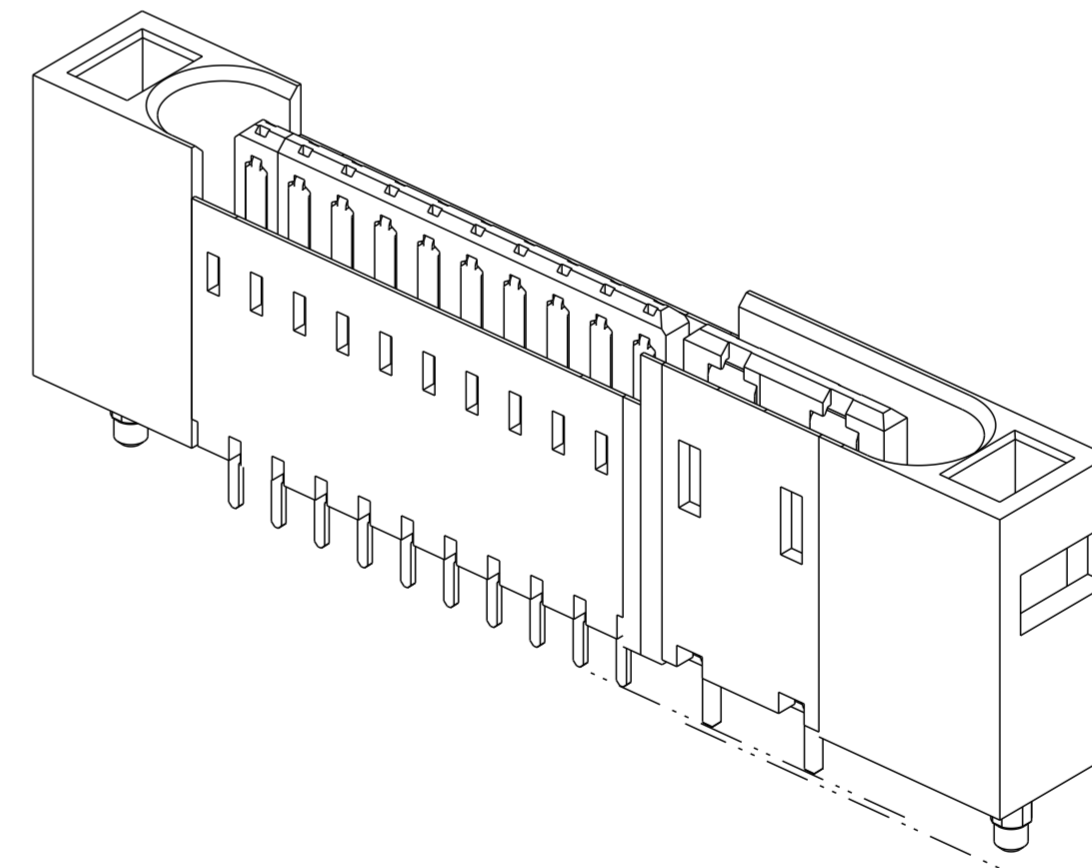
CONTACT AREA PLATING
UNDERPLATED 50u"(1.27um) MIN. NICKEL
1: 100u"(2.5um) MIN. Ag
2: 30u"(0.760um) MIN. GXT

FIRST MATE LAST BREAK PIN POSITION
000: ALL PINS ARE LONG PINS SEE TABLE

DIM "A", TAIL LENGTH FOR STB TAIL
1: 2.60±0.25mm (PCB THK 1.57±0.13mm)
2: 3.25±0.25mm (PCB THK 2.36±0.13mm)
DIM "A", TAIL LENGTH FOR PF TAIL
2: 3.04±0.25mm (PCB THK 1.57±0.13mm)

NOTES:

1. CONNECTOR MATERIALS:
HOUSING: HIGH TEMPERATURE THERMAL PLASTIC, BLACK UL 94V-0 COMPLIANT
CONTACTS: HIGH PERFORMANCE COPPER ALLOY.
2. CONTACT FINISH REF. GS-12-1031 SECTION 5.2
3. PRODUCT SPECIFICATION: GS-12-1031
4. APPLICATION SPECIFICATION: GS-20-0369
5. PRODUCT MARKING (FCI PART NUMBER & DATE CODE) ON HOUSING IN AREA SHOWN.
6. PACKAGING MEETS FCI SPECIFICATION GS-14-2272.
7. HOUSING COMPONENT WILL WITHSTAND EXPOSURE TO 260°C PEAK TEMPERATURE FOR 60 SECONDS IN A CONVECTION, INFRA-RED, OR VAPOR PHASE REFLOW OVEN.
8. COPPER PLATING THICKNESS IN CENTER OF VIA-HOLE CAN BE NO MORE THAN 0.003 LESS THAN OTHER AREAS.
9. ALL HOLE SIZES ARE FINISHED HOLE SIZES.
10. MOUNTING HOLES ARE UNPLATED
Ø2.25±0.05 FOR SOLDER TAILS
Ø2.40±0.1 FOR PRESS-FIT TAILS



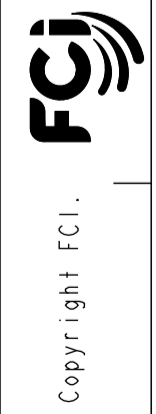
dr	Hai-Ling Liu	2015/02/05	projection	MM	size	A2	scale	3:1
eng	Hai-Ling Liu	2015/03/24			ecn no	-		
chr	-	-			rel level	Released		
appr	Pei-Ming Zheng	2015/03/24	product family	HPCE				
			title	HPCE CTB VERT HEADER	dwg no	10133461	rev	A
www.fci.com			cat. no.	-	Product - Customer Drw	sheet 3 of 4		

000	END MODULE	SIGNAL CONTACT										POWER CONTACT			END MODULE	
			10	9	8	7	6	5	4	3	2	1	2	1		
		ROW C	S3/S9	S3/S9	S3/S9	S3/S9	S3/S9	S3/S9	S3/S9	S3/S9	S3/S9	S3/S9	P3/P9	P3/P9		ROW A
		ROW D	S3/S9	S3/S9	S3/S9	S3/S9	S3/S9	S3/S9	S3/S9	S3/S9	S3/S9	P3/P9	P3/P9	ROW B		

S3 AND P3 FPR STB TAIL, S9 AND P9 FOR PF TAIL

SIGNAL CONTACT	ROW#	S#	DIM "B"±0.25	DIM "A"±0.25	
	ROW C	S1		8.73	3.25
		S2		7.46	3.25
		S3		8.73	2.60
		S4		7.46	2.60
		S9		8.73	3.04
		S10		7.46	3.04
	ROW D	S1		8.73	3.25
		S2		7.46	3.25
		S3		8.73	2.60
		S4		7.46	2.60
		S9		8.73	3.04
		S10		7.46	3.04

POWER CONTACT	ROW#	P#	DIM "C"±0.25	DIM "A"±0.25	
	ROW A	P1		8.86	3.25
		P2		7.59	3.25
		P3		8.86	2.60
		P4		7.59	2.60
		P9		8.86	3.04
		P10		7.59	3.04
	ROW B	P1		8.86	3.25
		P2		8.86	3.25
		P3		7.59	2.60
		P4		7.59	2.60
		P9		8.86	3.04
		P10		7.59	3.04



dr	Hai-Ling Liu	2015/02/05	projection	MM	size	A2	scale	3:1
eng	Hai-Ling Liu	2015/03/24			ecn no.	-		
chr	-	-			product family	HPCE	rel level	Released
appr	Pei-Ming Zheng	2015/03/24			title	HPCE CTB VERT HEADER		rev
					www.fci.com	cat. no.	-	Product - Customer Drw
					4LP20S	dwg no.	10133461	A
					sheet 4 of 4			