

4

3

2

1


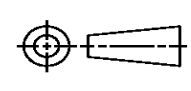
THIS DRAWING IS UNPUBLISHED. RELEASED FOR PUBLICATION
© COPYRIGHT ALL RIGHTS RESERVED.

LOC		DIST		REVISIONS			
P	LTR	DESCRIPTION		DATE	DWN	APVD	
	D1	ECR-14-005483		15MAY2014	GK	HMR	

REPLACED BY OCEAN STYLE APPLICATOR PART NUMBER 2266235-1

FOR REPLACEMENT PARTS FOR APPLICATOR 1426160 REFER TO ADDITIONAL PAGE(S). SPARE PARTS KIT (IF LISTED) WILL REMAIN AVAILABLE.

THE REPLACEMENT OCEAN STYLE APPLICATOR HAS THE SAME TERMINATOR/PRESS INTERFACE AS APPLICATOR 1426160

THIS DRAWING IS A CONTROLLED DOCUMENT.		DWN	GOPALAKRISHNA HV			TE Connectivity			
DIMENSIONS:		CHK	RAGHAVENDRA			NAME			
		TOLERANCES UNLESS OTHERWISE SPECIFIED:		APVD	SIDE FEED HD-I APPLICATOR				
		0 PLC ±	1 PLC ±	RAGHAVENDRA		PRODUCT SPEC			
MATERIAL		2 PLC ±	3 PLC ±	APPLICATION SPEC		SIZE	CAGE CODE	DRAWING NO	RESTRICTED TO
FINISH		4 PLC ±	ANGLES ±	WEIGHT		A3		©- 1426160	
				CUSTOMER DRAWING		SCALE	SHEET 1 OF 2	REV D1	

THIS DRAWING IS UNPUBLISHED. RELEASED FOR PUBLICATION
 © COPYRIGHT BY TYCO ELECTRONICS CORPORATION. ALL RIGHTS RESERVED.

LOC		DST		REVISIONS			
P	LTR	DESCRIPTION	DATE	OWN	APPD		
A	66		6-2007	MY	GB		
D		ECR-07-013075					

PART NUMBER	REV	FIRST USED	TERMINATOR	FEED TYPE	DESCRIPTION
1426160-1	D	-	LEADMAKER	MECH POST FEED	CUTS CARRIER
1426160-2	D	-	BENCH	MECH PRE FEED	CUTS CARRIER
1426160-6	D	-	LEADMAKER	MECH POST FEED	CONTINUOUS CARRIER
7-1426160-1	D	-	LEADMAKER	MECH POST FEED	-1 AND SPARE PARTS
7-1426160-2	D	-	BENCH	MECH PRE FEED	-2 AND SPARE PARTS
7-1426160-6	D	-	LEADMAKER	MECH POST FEED	-6 AND SPARE PARTS
7-1426160-7	A	-	-	-	SPARE PARTS KIT

CRIMP DATA (NON-AMP TERMINAL CUSTOMER SPEC.)

TERMINAL NAME: JST PART NO. SVH-21T-P1.1

CRIMP	SIZE	TYPE	RANGE
WIRE	1.78 [.070 IN]	F	0.32mm ² -0.9mm ² (22 AWG-18 AWG)
INSUL	2.60 [.102 IN]	F	1.70-2.60 [.067-.102 IN]

WIRE STRIP LENGTH: 3.10-3.90 [.122-.154 IN] | APPL INSTRUCTION: 408-8322

TERMINAL APPL SPEC: 114-3118 | FEED: 13.00 [.512 IN]

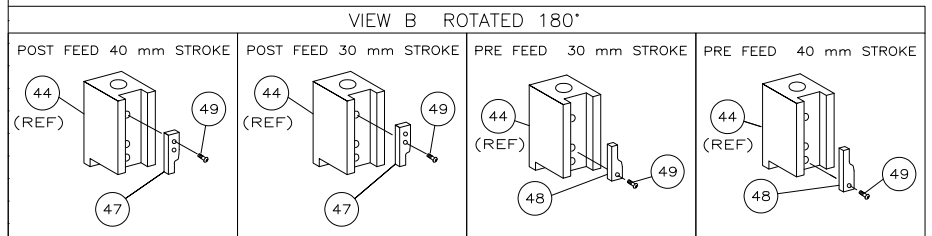
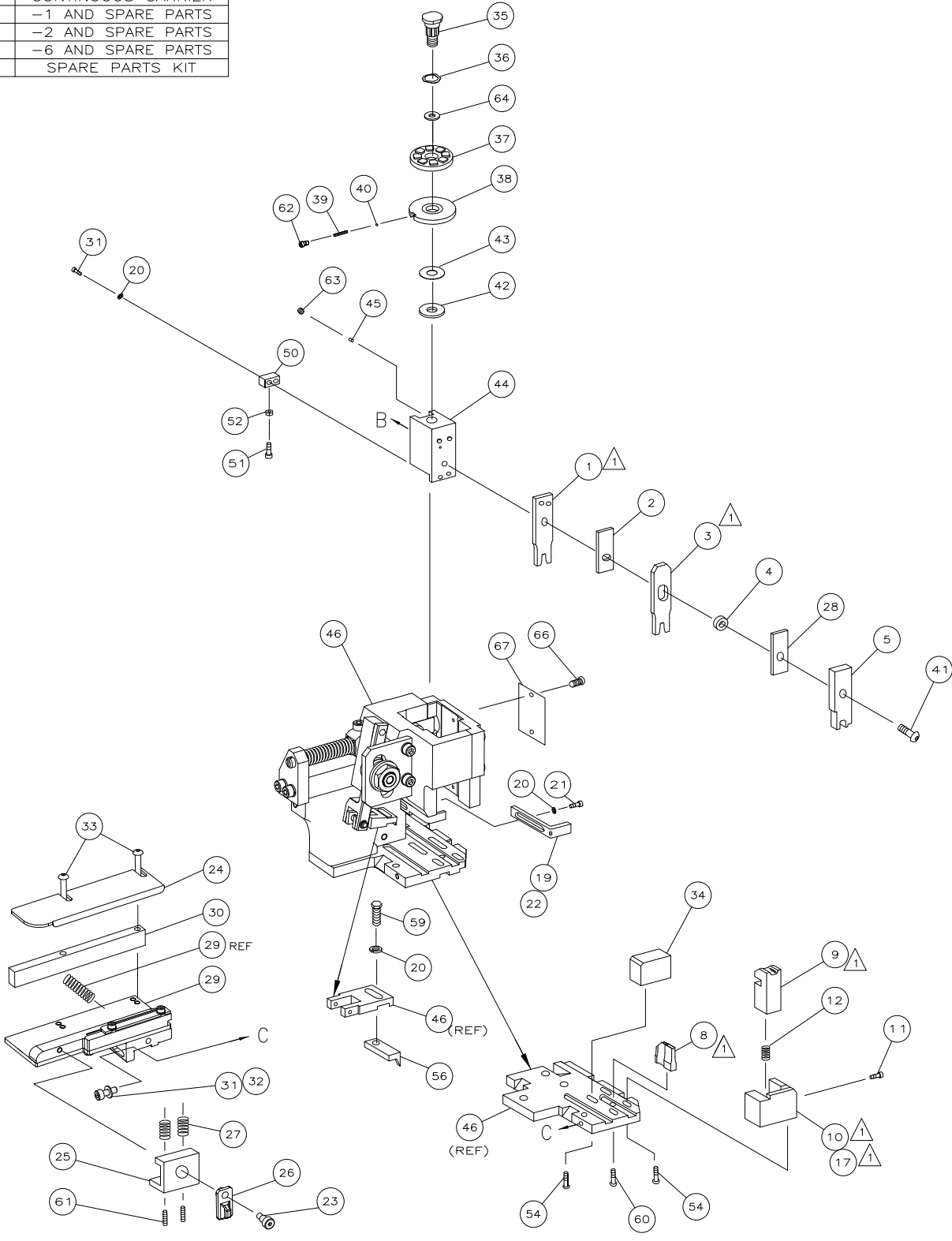
TERMINALS APPLIED

AMP PT NO.	JST PT. NO.			
286927-1	SVH-21T-P1.1	-	-	-
-	-	-	-	-
-	-	-	-	-
-	-	-	-	-
-	-	-	-	-
-	-	-	-	-
-	-	-	-	-
-	-	-	-	-
-	-	-	-	-

WIRE SIZE mm ² AWG	CRIMP HEIGHT	PIN PN & LENGTH [IN]
0.90mm ²	1.17 ±0.05 [.046 ±0.002 IN]	2-354779-5 [.3115]
18 AWG	1.15 ±0.05 [.045 ±0.002 IN]	2-354779-7 [.3125]
0.75mm ²	1.13 ±0.05 [.044 ±0.002 IN]	3-354779-0 [.3140]
0.50mm ² OR 20AWG	1.10 ±0.05 [.043 ±0.002 IN]	3-354779-1 [.3145]
0.32mm ² OR 22AWG	1.05 ±0.05 [.041 ±0.002 IN]	3-354779-5 [.3165]

SET UP GAGE: 458637-3 | LAYOUT: L1426160

- RECOMMENDED SPARE PARTS.
- GREASE RAM, CAM, CAM FOLLOWER AND FEED ROD LIGHTLY.
- LUBRICATE DAILY PER THE APPLICATOR INSTRUCTION SHEET SUPPLIED WITH THE APPLICATOR.
- SEE (PARTIAL) JST SPECIFICATION SHEET DRAWING - JST (UK) 118 FOR REQUIRED AWG WIRE SIZE TENSILE VALUES.
- CRIMP HEIGHTS FOR METRIC WIRE SIZES CALCULATED BY AMP. USE APPLICATION SPECIFICATION 114-3118 FOR TENSILE VALUES ON METRIC WIRE SIZES.
- INSULATION RANGE OF TERMINAL RESTRICTED AT QUALIFICATION FROM TERMINAL MANUFACTURERS RECOMMENDED MAX SIZE OF 3.0MM



QTY	REQD	PER ASSY	PART NO	DESCRIPTION	ITEM NO			
-	1	1	1	1	1	1426160	PRINT, APPLICATOR LOG SHEET	73
-	1	1	1	1	1	1338705-1	DOCUMENTATION PACKAGE	71
-	1	1	1	1	1			70
-	1	1	1	1	1	461264-1	PLATE, IDENTIFICATION	67
-	2	2	2	2	2	21017-2	SCR,DRIVE(#2x.19)ID PLATE	66
-	1	1	1	1	1	986950-1	WASHER, FLAT PRECISION	64
-	1	1	1	1	1	3-18031-0	SCR,SKT SET(M6X6)RAM	63
-	1	1	1	1	1	18023-9	SCR,SHC(M4X6)INS DISC	62
-	2	2	2	2	2	2-18032-5	SCR,SET(M5X20)DRAG	61
-	1	1	1	1	1	18024-7	SCR,BHC(M4X10)ANVIL	60
-	1	1	1	1	1	5-18022-2	SCR,HEX(M4X8)FEED FINGER	59
-	1	1	1	1	1			58
-	1	1	1	1	1	1338685-1	PAWL, FEED	56
-	4	4	4	4	4	18024-8	SCR,BHC(M4X12)SHEAR HOLDER	54
-	1	1	1	1	1	18030-1	NUT,HEX(M3)HOLD DOWN	52
-	1	1	1	1	1	811242-5	BUMPER, HOLDDOWN	51
-	1	1	1	1	1	690753-2	SPACER, TONKER	50
-	1	1	1	1	1	18024-3	SCR,BHC(M3X10)CAM	49
-	1	1	1	1	1	1338675-1	CAM, PRE FEED 30 & 40 mm ST	48
-	1	1	1	1	1	1338676-1	CAM, POST FEED 30 & 40 mm ST	47
-	1	1	1	1	1	1320999-3	APPLICATOR BASIC SUBASSY	46
-	1	1	1	1	1	690191-1	PLUG, NYLON	45
-	1	1	1	1	1	1338660-1	RAM	44
-	1	1	1	1	1	690125-1	WASHER, LAMINATED	43
-	1	1	1	1	1	690124-1	WASHER, RAM	42
-	1	1	1	1	1	2-18024-6	SCR,BHC(M8X25)RAM	41
-	1	1	1	1	1	23241-1	BALL, STEEL	40
-	1	1	1	1	1	2-22278-7	SPRING, COMPRESSION	39
-	1	1	1	1	1	1320922-1	DISC, INSULATION	38
-	1	1	1	1	1	354777-1	WIRE DISC, PLASTIC	37
-	1	1	1	1	1	22480-5	WASHER, SPRING	36
-	1	1	1	1	1	690212-1	POST, RAM	35
-	1	1	1	1	1	1320934-1	SUPPORT, TERMINAL	34
-	2	2	2	2	2	1-18024-0	SCR,BHC(M4X20)STRIP GUIDE	33
-	1	1	1	1	1	18027-2	WASHER, FLAT(M4)	32
-	3	3	3	3	3	1-18023-2	SCR,SKT CAP(M4X12)MOUNT BLOCK	31
-	1	1	1	1	1	1320908-6	SPACER, STRIP GUIDE	30
-	1	1	1	1	1	1633073-1	STRIP GUIDE PLATE ASSY	29
-	1	1	1	1	1	455888-4	SPACER, FRONT SHEAR DEP	28
-	2	2	2	2	2	1-22284-0	SPRING, DRAG	27
-	1	1	1	1	1	356835-1	LEVER, DRAG RELEASE	26
-	1	1	1	1	1	240792-1	DRAG, TERMINAL	25
-	1	1	1	1	1	1320928-2	PLATE, STRIP GUIDE	24
-	1	1	1	1	1	980371-4	SCR,SHC SHLD	23
-	1	1	1	1	1	690472-2	STRIPPER	22
-	1	1	1	1	1	1-18023-1	SCR,SHC(M4X10)STRIPPER	21
-	4	4	4	4	4	18025-2	WASHER,LOCK(M4)STRIPPER	20
-	1	1	1	1	1	690472-1	STRIPPER	19
-	1	1	1	1	1	1338684-1	HOLDER, SHEAR, FRONT (NO-CUT)	17
-	1	1	1	1	1			16
-	1	1	1	1	1			15
-	1	1	1	1	1			14
-	1	1	1	1	1	3-22280-3	SPRING, SHEAR	13
-	1	1	1	1	1	356885-4	STOP, SHEAR	12
-	1	1	1	1	1	1320921-1	HOLDER, SHEAR, FRONT (CUT)	10
-	1	1	1	1	1	462006-1	SHEAR, FLOAT (FRONT)	9
-	1	2	2	2	2	1333203-4	ANVIL	8
-	1	1	1	1	1			7
-	1	1	1	1	1			6
-	1	1	1	1	1	2-455889-0	DEPRESSOR, SHEAR (FRONT)	5
-	1	1	1	1	1	238011-6	SPACER, BLOCK CRIMPER	4
-	1	2	2	2	2	2-1213077-3	CRIMPER, INSULATION	3
-	1	1	1	1	1	455888-3	SPACER, CRIMPER	2
-	1	2	2	2	2	3-456404-6	CRIMPER, WIRE	1

THIS DRAWING IS A CONTROLLED DOCUMENT.

APVD: F. BACKHURST | NAME: Tyco Electronics Corporation | ADDRESS: Harrisburg, PA 17105-3608

PRODUCT SPEC: SIDE FEED HD-I APPLICATOR

APPLICATION SPEC: -

SIZE: A1 | CAGE CODE: 00779 | DRAWING NO: 1426160

CUSTOMER DRAWING | SCALE: - | SHEET: 1 OF 1 | REV: D