

## **Nextion Enhanced NX1060P101-011C-I - Generic 10.1" HMI 1024\*600 Touch Display for Arduino Raspberry Pi**

SKU 104990607

Nextion is a Human Machine Interface(HMI) solution that provides a control and visualization interface between a human and a process, machine, application, or appliance. Nextion is not just a touch display, it has a hardware part and a software part which is well developed for HMI applications.

### **Key Features**

- Nextion IPS capacitive touch display
- 10.1" with 1024\*600 resolution
- Providing HMI function for external device like Arduino board or Raspberry Pi
- Including GUI development software and many API commands for GUI development

### **Description**

Nextion is a Human Machine Interface(HMI) solution that provides a control and visualization interface between a human and a process, machine, application, or appliance. Nextion is not just a touch display, and it has a hardware part and a software part which is well developed for HMI applications.

Nextion(NX1060P101-011C-I) display is an IPS display with a resolution of 1024\*600. The touch panel for this display is capacitive touch. Nextion has only one serial(TTL) for power supply or connection with peripheral devices like Arduino board or Raspberry Pi. What 's more? Nextion display has an MCU, and its frequency is up to 200MHz. With the help of 120MB flash, 512KB RAM,1024 Byte EEPROM, and an SD card socket, this display is embedded with a rich storage for HMI programming. Different from the other type"T" Nextion displays, this type"P" Nextion has 8 extra GPIOs(two of which are PWM pins) for connecting peripheral equipment. And there is an RTC module on the display for controlling these devices in real-time.

As for the software part, Nextion has rich resources. [Nextion Editor](#) is a Windows software for GUI development. There are [libraries](#) for serial communication with Arduino boards and Raspberry Pi. Moreover, a mass of API is defined for users in [The Nextion Instruction Set](#). With these resources, I believe you will have an easy experience with this display.

### Caution:

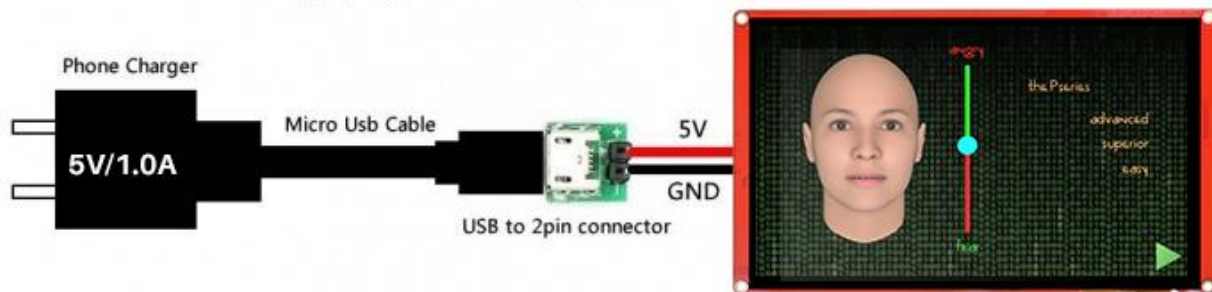
Working under insufficient power supply condition will damage the Nextion model easily.



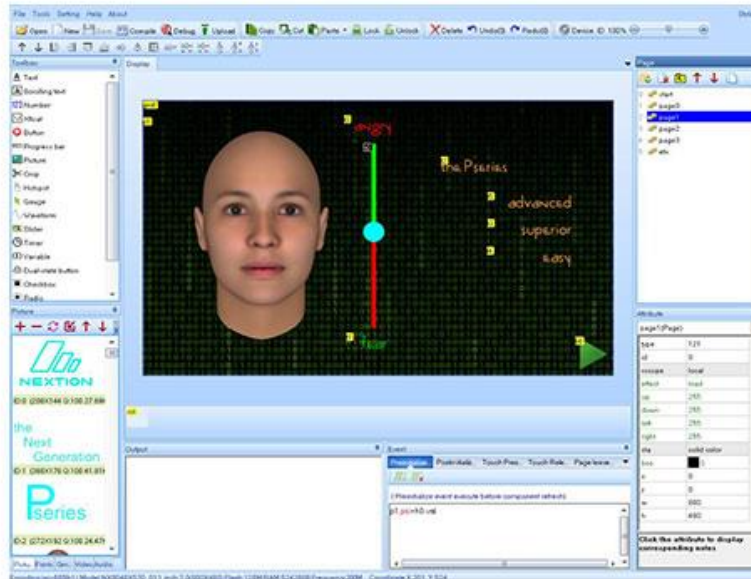
Blurred screen? Flashing? You may be suffering from power shortages. Power off at the first possible moment. No more repeated attempts to damage your Nextion model.

A small connector is included in the package. Please try to power Nextion with your phone charger through the connector to check if Nextion works well.

A high quality usb cable is required.



## NEXTION EDITOR SOFTWARE



Free and Easy-to-Use  
Nexition HMI software



ASCII text based instructions  
for display side coding



Assignable attribute value  
components at runtime



Drag-and-Drop components  
for GUI design and interaction



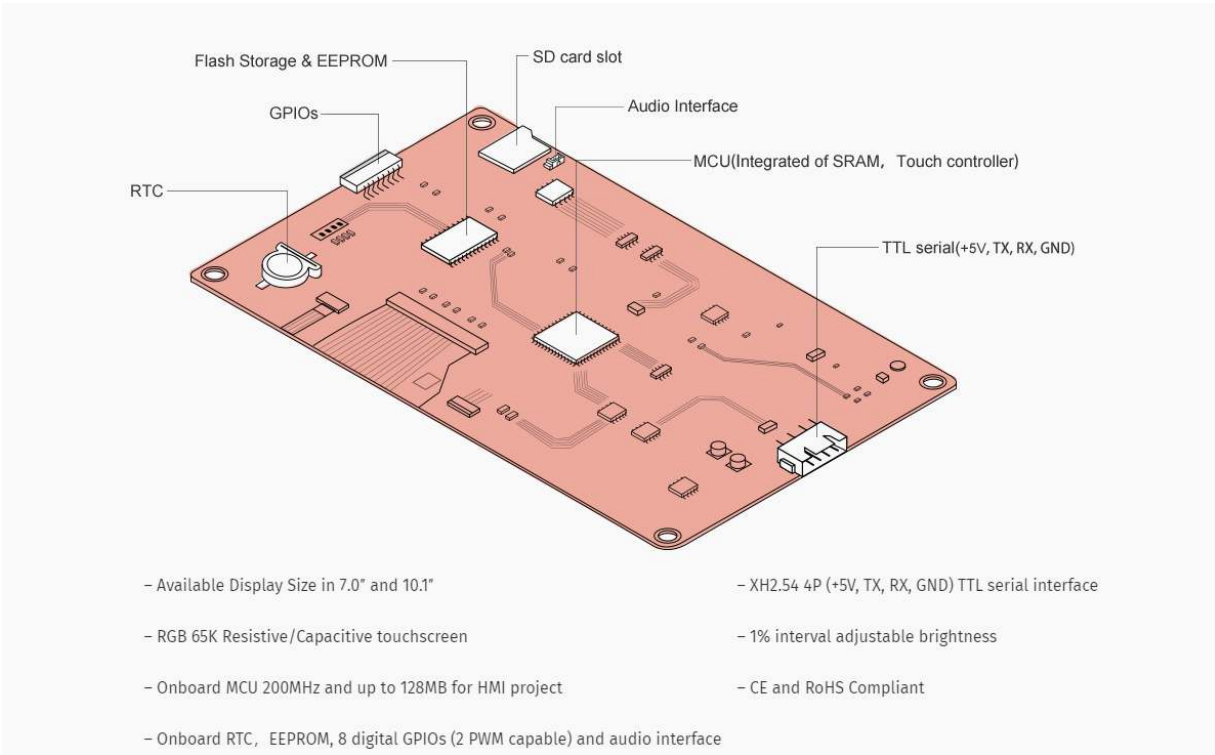
Built-in debugger for  
HMI project simulation



User Event Code pane for GUI  
interaction and peripheral MCU  
communication

- Support Audio Resource
- Support Video Resource
- Support Animation Resource
- Support PNG Picture Resource
- Component Transparency Attribute
- Component and Page Loading Effect
- Component Move and Drag in Runtime
- Anti-aliasing Gauge
- New Components (ComboBox, SLText, Gmov, Video, Switch, EXPicture)

## Hardware Overview



## Specification

Item	Value
Color	IPS 65K 65536 colors
Resolution	1024x600 pixel
Touch-type	capacitive
Touches	> 1 million
Backlight	LED
Backlight lifetime	>30,000 Hours

(Average)	
Operating Voltage	5V
Operating Current	800mA Normal Mode, 170mA Sleeping Mode
Power supply recommend	5V, 2.0A, DC
Serial Port Baudrate	2400(Min), 9600(Typical),921600(Max)
Serial Port Mode	TTL
Serial Port	4Pin_2.54mm
USB interface	NO
SD card socket	Yes (FAT32 format), support maximum 32G Micro SD Card
FLASH Memory	120 MB
RAM Memory	512 KB
EEPROM	1024 Byte
Instruction Buffer	1024 Byte
Extended IO	8 Digital extended GPIO, IO0-IO7 support input, output, and component binding event, IO6-IO7 support PWM
RTC	built-in RTC support (Battery type: CR1220)

## Dimension

### NX1060P101-011C-I\_Dimension

## Part List

- Nextion NX NX1060P101-011C-I HMI Display\*1
- XH2.54 4P wire\*1
- power supply test board\*1

## Related Nextion Display

Type of Display	NX3224T024	NX4024T032	NX4832T035	NX4827T043	NX8048P070-011R	NX1060P101-011C-I
Size	2.4"	3.2"	3.5"	4.3"	7.0"	10.1"
Resolution	320*240	400*240	480*320	480*272	800*480	1024*600
Touch panel	RTP	RTP	RTP	RTP	RTP	CTP
Flash	4MB	4MB	16MB	16MB	128MB	128MB
RAM	3584Byte	3584Byte	3584Byte	3584Byte	512KB	512KB
MCU Frequency	48 MHz	48 MHz	48 MHz	48 MHz	200 MHz	200 MHz
EEPROM	-	-	-	-	1024Byte	1024Byte
GPIOs	-	-	-	-	8	8
RTC	-	-	-	-	Yes	Yes

## ECCN/HTS

HSCODE	9013803010
UPC	

