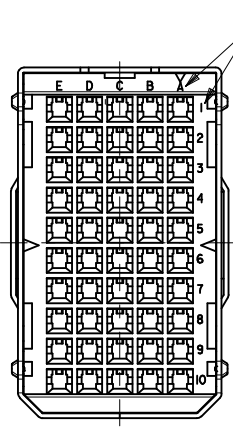
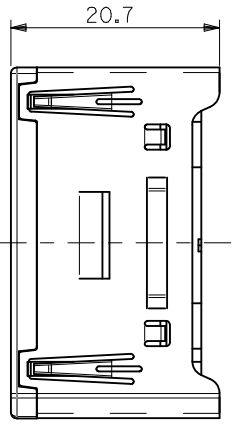
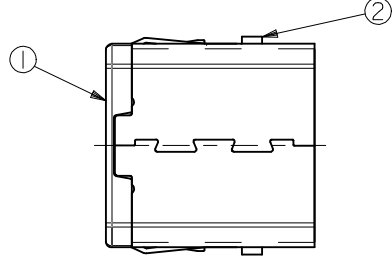


嵌合側
MATING SIDE



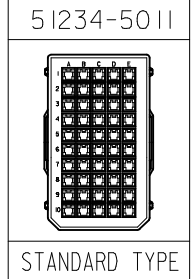
電線挿入側
WIRE SIDE



注記
NOTES

- 材質
MATERIAL
①ハウジング：ガラス入りPBT樹脂
HOUSING : PBT G.F.
UL94V-0 色：灰
UL94V-0 COLOR : GRAY
- 適用端子：56116-8*90, 56117-8*90
56118-8*90, 56119-8*90
APPLICABLE CRIMP PIN : 56116-8*90, 56117-8*90
56118-8*90, 56119-8*90
- 嵌合相手：51238-501*
MEET WITH : 51238-501*

<誤嵌合防止キー（極性）タイプ>
<POLARITY KEY TYPE>



| | | | |
|---------------|--------------|-------------|---------|
| STANDARD | 51234-5011 | 51234-***1* | 50 |
| POLARITY TYPE | MATERIAL NO. | MODEL NO. | CIRCUIT |

| | | | | | | | |
|---|--|---|----------------------------|-------------------|---|------------------------------|------------------------|
| REVISED EC NO: J2009-0831 DRWN: MAKURAA 2008/12/15 CHKD: T. HARUYAMA 2008/12/15 APPR: NUKITA 2008/12/16 | GENERAL TOLERANCES (UNLESS SPECIFIED) | | DIMENSION STYLE MM ONLY | | SCALE --- | DESIGN UNITS METRIC | THIRD ANGLE PROJECTION |
| | 10 UNDER | ±0.2 | DRAWN BY S. AKIYAMA | DATE '02/01/21 | TITLE COMPACT ROBOT CONN. 50CKT. PLUG PIN HS'G ASS'Y | | |
| | 10 OVER 30 UNDER | ±0.25 | CHECKED BY J. MIYAZAWA | DATE '02/02/04 | MOLEX INCORPORATED | | |
| | 30 OVER | ±0.3 | APPROVED BY Y. ITO | DATE '02/02/04 | MATERIAL NO. SEE TABLE | DOCUMENT NO. SD-51234-010 | SHEET NO. 1 OF 1 |
| | ANGULAR ±3 ° | THIS DRAWING CONTAINS INFORMATION THAT IS PROPRIETARY TO MOLEX INCORPORATED AND SHOULD NOT BE USED WITHOUT WRITTEN PERMISSION | | | | | |
| | DRAFT WHERE APPLICABLE MUST REMAIN WITHIN DIMENSIONS | | | | | | |