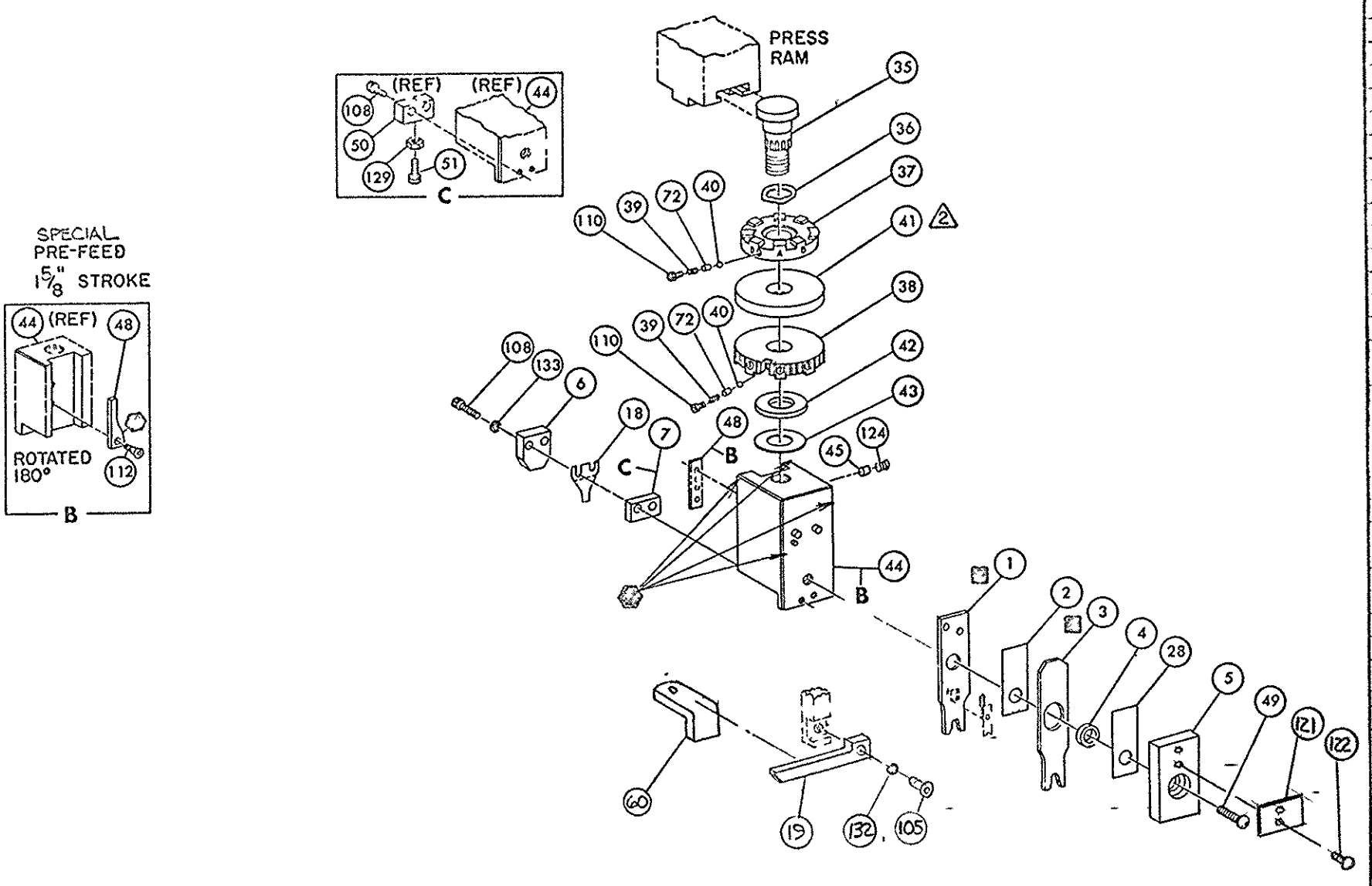
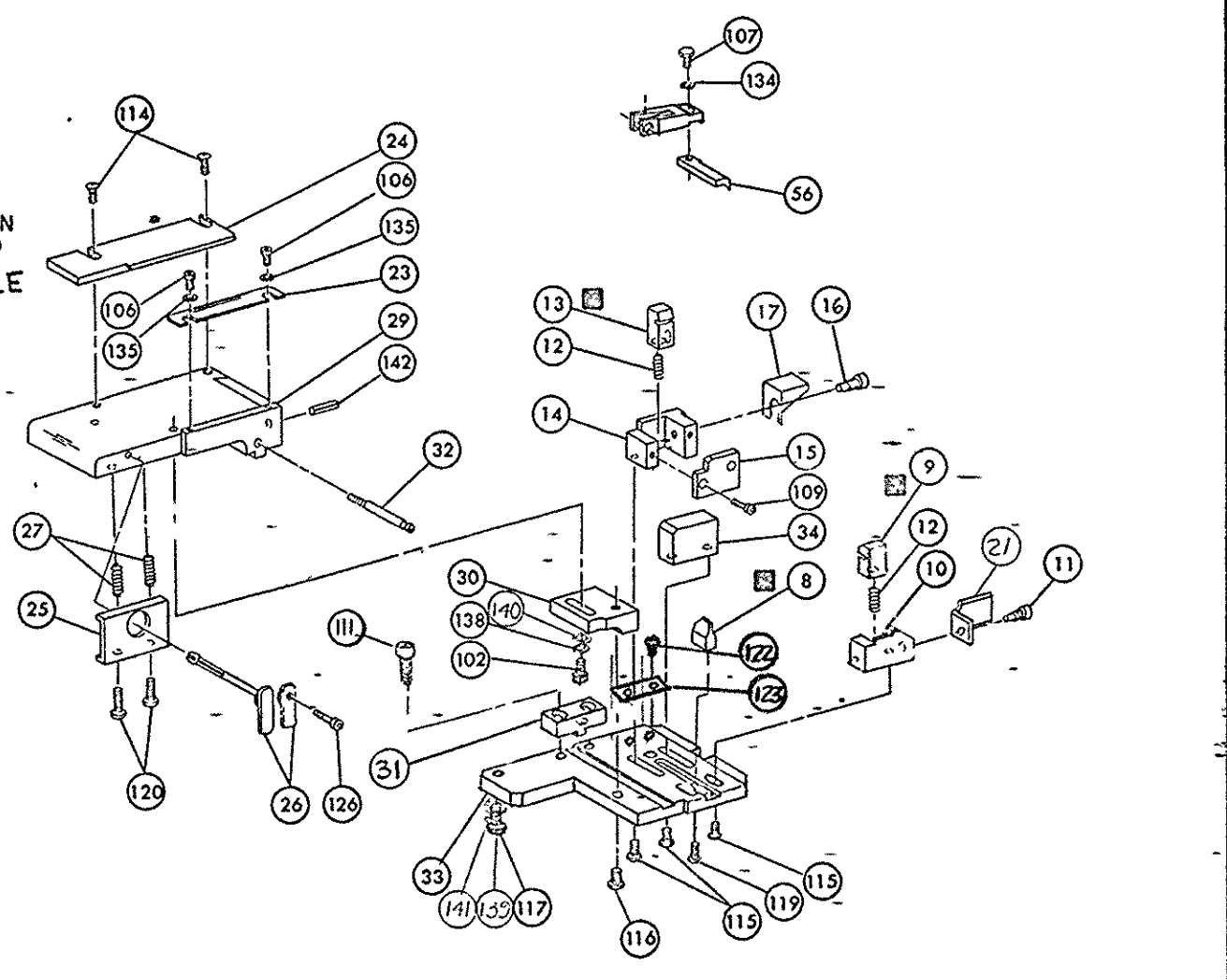


THIS IS A CONTROLLED DOCUMENT



- NOTES:
- 1- ONLY THE ITEMS WITH QUANTITIES SPECIFIED ON PARTS LIST ARE USED ON THIS APPLICATOR.
 - △ USED IN PLACE OF ITEM 38 WHEN INSULATION CRIMP IS NOT USED
 - 3- FEED PIVOT-BOTTOM HOLE
 - △ SEE REMARKS
 - △ SPARE TOOLING KIT 7-466963-7
- KEY:
- - RECOMMENDED SPARE PARTS
 - - GREASE WEEKLY



QTY	PART NO	DESCRIPTION	ITEM NO
1	453615-1	PLATE, TERMINAL NO.	145
2	690701-2	PLATE, SERIAL NO.	144
1	4-21028-0	PIN, SLOT SPR (.093 DIA X .75) STR G PLATE	142
1	21899-2	WASHER, FLAT (NO 10) MOUNTING	141
1	21899-2	WASHER, FLAT (NO 10) S. G. ADJ BLOCK	140
1	21024-5	WASHER, LOCK (NO 10) MOUNTING	139
1	21024-5	WASHER, LOCK (NO 10) STRIP GUIDE ADJ BLOCK	138
2	21024-2	WASHER, LOCK (NO 4) FRONT STRIP GUIDE	137
REF	21024-4	WASHER, LOCK (NO 8) FEED FINGER	136
2	21024-4	WASHER, LOCK (NO 8) DEPRESSOR	135
REF	21024-4	WASHER, LOCK (NO 8) STRIPPER	134
1	21018-5	NUT, HEX MACH (6-32) HOLDDOWN	133
1	21018-5	NUT, HEX MACH (6-32) HOLDDOWN	132
1	21018-5	NUT, HEX MACH (6-32) HOLDDOWN	131
1	21018-5	NUT, HEX MACH (6-32) HOLDDOWN	130
1	21018-5	NUT, HEX MACH (6-32) HOLDDOWN	129
1	21018-5	NUT, HEX MACH (6-32) HOLDDOWN	128
1	21018-5	NUT, HEX MACH (6-32) HOLDDOWN	127
1	21018-5	NUT, HEX MACH (6-32) HOLDDOWN	126
1	21018-5	NUT, HEX MACH (6-32) HOLDDOWN	125
1	21018-5	NUT, HEX MACH (6-32) HOLDDOWN	124
1	21018-5	NUT, HEX MACH (6-32) HOLDDOWN	123
1	21018-5	NUT, HEX MACH (6-32) HOLDDOWN	122
1	21018-5	NUT, HEX MACH (6-32) HOLDDOWN	121
1	21018-5	NUT, HEX MACH (6-32) HOLDDOWN	120
1	21018-5	NUT, HEX MACH (6-32) HOLDDOWN	119
1	21018-5	NUT, HEX MACH (6-32) HOLDDOWN	118
1	21018-5	NUT, HEX MACH (6-32) HOLDDOWN	117
1	21018-5	NUT, HEX MACH (6-32) HOLDDOWN	116
1	21018-5	NUT, HEX MACH (6-32) HOLDDOWN	115
1	21018-5	NUT, HEX MACH (6-32) HOLDDOWN	114
1	21018-5	NUT, HEX MACH (6-32) HOLDDOWN	113
1	21018-5	NUT, HEX MACH (6-32) HOLDDOWN	112
1	21018-5	NUT, HEX MACH (6-32) HOLDDOWN	111
1	21018-5	NUT, HEX MACH (6-32) HOLDDOWN	110
1	21018-5	NUT, HEX MACH (6-32) HOLDDOWN	109
1	21018-5	NUT, HEX MACH (6-32) HOLDDOWN	108
1	21018-5	NUT, HEX MACH (6-32) HOLDDOWN	107
1	21018-5	NUT, HEX MACH (6-32) HOLDDOWN	106
1	21018-5	NUT, HEX MACH (6-32) HOLDDOWN	105
1	21018-5	NUT, HEX MACH (6-32) HOLDDOWN	104
1	21018-5	NUT, HEX MACH (6-32) HOLDDOWN	103
1	21018-5	NUT, HEX MACH (6-32) HOLDDOWN	102
1	21018-5	NUT, HEX MACH (6-32) HOLDDOWN	101
1	21018-5	NUT, HEX MACH (6-32) HOLDDOWN	79
1	21018-5	NUT, HEX MACH (6-32) HOLDDOWN	78
1	21018-5	NUT, HEX MACH (6-32) HOLDDOWN	77
1	21018-5	NUT, HEX MACH (6-32) HOLDDOWN	76
1	21018-5	NUT, HEX MACH (6-32) HOLDDOWN	75
1	21018-5	NUT, HEX MACH (6-32) HOLDDOWN	74
1	21018-5	NUT, HEX MACH (6-32) HOLDDOWN	73
1	21018-5	NUT, HEX MACH (6-32) HOLDDOWN	72
1	21018-5	NUT, HEX MACH (6-32) HOLDDOWN	71
1	21018-5	NUT, HEX MACH (6-32) HOLDDOWN	70
1	21018-5	NUT, HEX MACH (6-32) HOLDDOWN	69
1	21018-5	NUT, HEX MACH (6-32) HOLDDOWN	68
1	21018-5	NUT, HEX MACH (6-32) HOLDDOWN	67
1	21018-5	NUT, HEX MACH (6-32) HOLDDOWN	66
1	21018-5	NUT, HEX MACH (6-32) HOLDDOWN	65
1	21018-5	NUT, HEX MACH (6-32) HOLDDOWN	64
1	21018-5	NUT, HEX MACH (6-32) HOLDDOWN	63
1	21018-5	NUT, HEX MACH (6-32) HOLDDOWN	62
1	21018-5	NUT, HEX MACH (6-32) HOLDDOWN	61
1	21018-5	NUT, HEX MACH (6-32) HOLDDOWN	60
1	21018-5	NUT, HEX MACH (6-32) HOLDDOWN	59

VISIBLE				CRIMPING DATA				APPLICATOR WILL APPLY																													
PAD LTR	CRIMP HEIGHT	WIRE SIZE	WIRE STRIP LENGTH	PIN	SOCKET																																
A	.026±.001	28																																			
B																																					
C	.032±.001	24																																			
D	.029±.001	26		66682	66683																																
CRIMP	SIZE	TYPE	FEED	APPL INST																																	
WIRE	.042	F	.300	A1																																	
INSUL	.062	O																																			
WIRE RANGE	28-26	INSULATION RANGE	.030-.060	PRESS NO	463345-1																																
REMARKS																																					
△ WIRE SIZE #24 ONLY WHEN APPLIED BY APPL. ENG.																																					
SIM - 466758																																					
<table border="1"> <tr> <td>REVISION</td> <td>DATE</td> <td>BY</td> <td>APP</td> </tr> <tr> <td>1</td> <td>0150-07-11</td> <td>TM</td> <td>5-10</td> </tr> <tr> <td>2</td> <td>0150-07-11</td> <td>TM</td> <td>11-07</td> </tr> <tr> <td>3</td> <td>0150-07-11</td> <td>TM</td> <td>11-07</td> </tr> <tr> <td>4</td> <td>0150-07-11</td> <td>TM</td> <td>11-07</td> </tr> <tr> <td>5</td> <td>0150-07-11</td> <td>TM</td> <td>11-07</td> </tr> <tr> <td>6</td> <td>0150-07-11</td> <td>TM</td> <td>11-07</td> </tr> </table>										REVISION	DATE	BY	APP	1	0150-07-11	TM	5-10	2	0150-07-11	TM	11-07	3	0150-07-11	TM	11-07	4	0150-07-11	TM	11-07	5	0150-07-11	TM	11-07	6	0150-07-11	TM	11-07
REVISION	DATE	BY	APP																																		
1	0150-07-11	TM	5-10																																		
2	0150-07-11	TM	11-07																																		
3	0150-07-11	TM	11-07																																		
4	0150-07-11	TM	11-07																																		
5	0150-07-11	TM	11-07																																		
6	0150-07-11	TM	11-07																																		

CUSTOMER ACCESSIBLE PRODUCTION DRAWING

466963-1