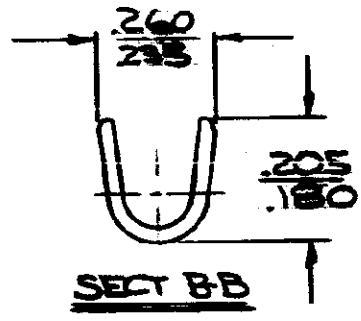
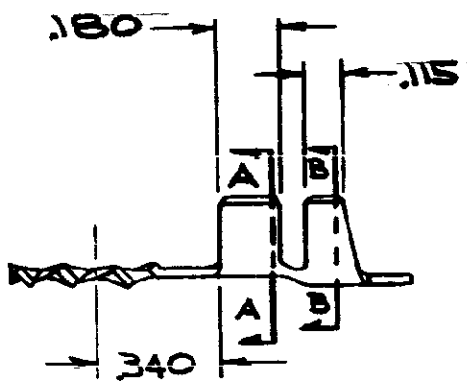
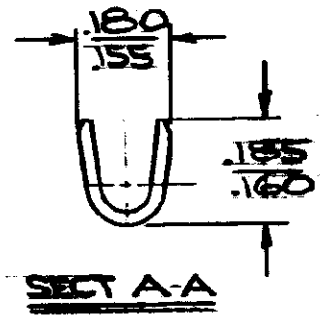
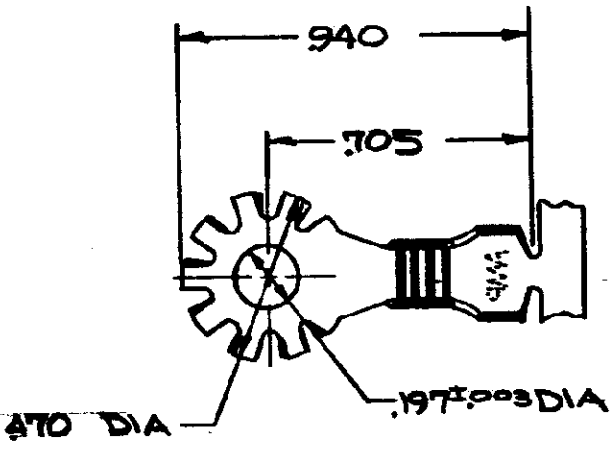


350080



CONTINUOUS STRIP, ON REELS

PART NO.	MATERIAL & FINISH
350080-1	.025 STEEL TIN
350080-2	.025 STEEL (HOT TREATING)
350080-3	.025 BRASS - NONE

DIMENSIONS IN INCHES. DO NOT SCALE PRINT.

**CUSTOMER COPY
REFERENCE ONLY**

MATERIAL AND FINISH



CLASS _____

WIRE — RANGE — INSULATION
18-14 pas:190

TYPE _____

D1 REVISED PER ECO-11-005294 RK HMR 08APR11

TOLERANCE EXCEPT AS NOTED ± .015 ± 1° 0'

LOC **FA** NO. **350080** REV D1

11-10-71 DE

NAME **RING ANTIROTATIONAL, EXTERNAL**

BY **G YETTER** APP *[Signature]* 11-11-71