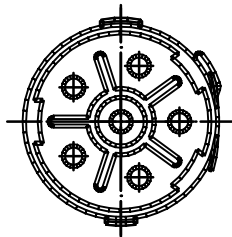
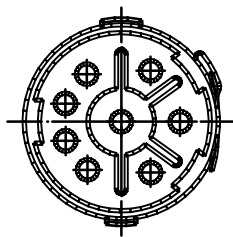


Views from "X"

6-Pole
(5+1)



8-Pole

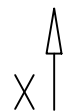
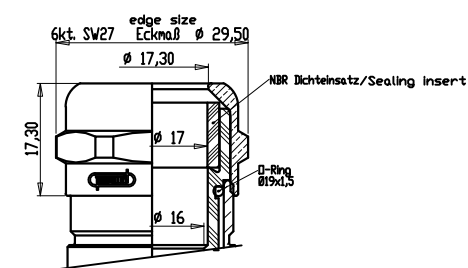
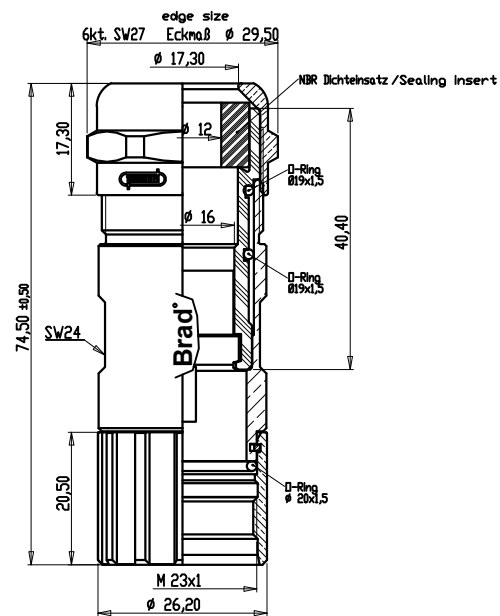


Cable Diameter

7 - 12 mm

Cable Diameter

11 - 17 mm



| Cable Diameter | | Crimp Contacts | Without Contacts |
|----------------|--------------|-------------------------|------------------|
| 6 Pole (5+PE) | 7 - 12mm | KAP6S00-105 | KAP6S00-005 |
| | | 1202330001 | 1202330003 |
| | 11 - 17mm | KAP6S00-109 | KAP6S00-009 |
| | | 1202330002 | 1202330004 |
| | Crimp range* | 0,75-2,5mm² | |
| 8 Pole | 7 - 12mm | KAP8S00-115 | KAP8S00-005 |
| | | 1202330005 | 1202330007 |
| | 11 - 17mm | KAP8S00-119 | KAP8S00-009 |
| | | 1202330006 | 1202330008 |
| | Crimp range* | 0,25-1,0mm²/0,75-2,5mm² | |

*Crimp range only applies to "Crimp Contacts" version

Notes:

Tolerances (unless specified): DIN ISO 2768 m

| | | | | | | |
|--|--|---------------------------------------|---|------------------|--------------|------------------------|
| DESCRIPTION EC NO: IPG2015-0907 DRWN: BBRAUCH 2014/11/18 CHKD: ZISMAYIL 2014/11/19 APPR: CBURGER | QUALITY SYMBOLS | GENERAL TOLERANCES (UNLESS SPECIFIED) | DIMENSION STYLE | SCALE | DESIGN UNITS | THIRD ANGLE PROJECTION |
| | ▽ = 0 | mm INCH | MM | --- | METRIC | FA M23 XP FE STR |
| | ▽ = 0 | 4 PLACES ± --- ± --- | DRAWN BY DATE | FA M23 XP FE STR | | |
| | | 3 PLACES ± --- ± --- | BB 2008/11/18 | ---- | | |
| | | 2 PLACES ± 0.05 ± --- | CHECKED BY DATE | ---- | | |
| | 1 PLACE ± 0.1 ± --- | JKO 2008/12/09 | APPROVED BY DATE | molex | | |
| | 0 PLACE ± --- ± --- | --- | --- | SD-120233-001 | | |
| | ANGULAR ± --- ° | MATERIAL NO. | --- | DOCUMENT NO. | SHEET NO. | |
| | DRAFT WHERE APPLICABLE MUST REMAIN WITHIN DIMENSIONS | see table | --- | SD-120233-001 | 1 OF 1 | |
| 2 | REV | SIZE | THIS DRAWING CONTAINS INFORMATION THAT IS PROPRIETARY TO MOLEX INCORPORATED AND SHOULD NOT BE USED WITHOUT WRITTEN PERMISSION | | | |
| | | A3 | | | | |