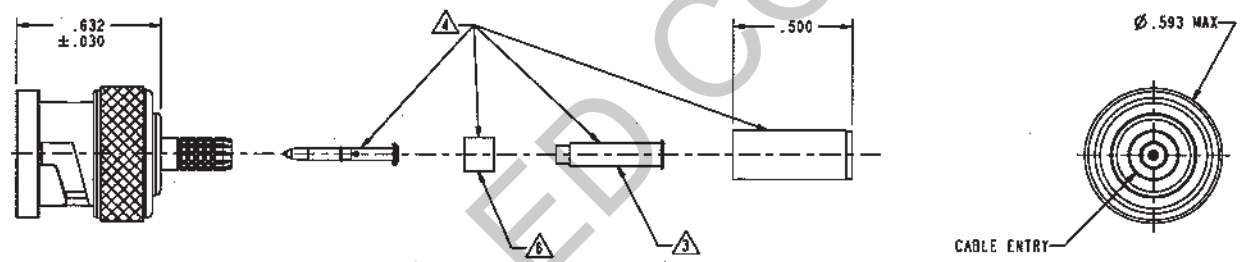


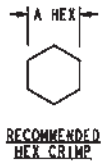
DASH NO	CABLES ACCOMMODATED	A HEX	ASSEMBLE PER
-001	RG-178, -196	.178	
-002	HEWLETT PACKARD 8120-1107	.197	
-003	RG-174, 316	.178	
-004	RG-179, 187	.178	
-005	NORTHERN ELECTRIC DBL-SHLD RG-187	.197	
-006	GC875GP1, GRUMMAN DBL-SHLD RG-188	.197	
-007	275-3991, MICRODOT		
-008	RG-195, -180 421-111, ESSEX		
-009	8218, BELDEN YR23023 BELDEN 21-597, ESSEX	.178	
-010	RG-122		TAI-D118
-011	RG-58, RG-141; RG-303, TCC-50-2	.213	
-012	RG-55, -142 -223, -400		
-013	RG-59		
-013A	TCC-75-2	.255	
-014	8212, BELDEN		
-015	730A, LUCENT	.290	
-016	724, LUCENT 8281, BELDEN	.324	
-017	RG-6	.344	
-018	9268, BELDEN	.255	
-019	8279, BELDEN		
-020	9246, BELDEN	.290	
-021	88246, BELDEN	.213	
-022	88241, 88269, BELDEN	.255	TAI-C118
-023	89108, BELDEN		TAI-D118
-024	89120, BELDEN	.290	
-025	734A, LUCENT	.255	
-026	735A, LUCENT	.178	TAI-243
-026-X			
-027	KS19224L2, LUCENT		
-030	32448A, DRAKA	.324	TAI-D118
-031	CDT RA7000	.213	

DATA CONTAINED IN THIS DOCUMENT IS PROPRIETARY OF TROMPETER ELECTRONICS INC. AND SHALL NOT BE DISCLOSED, COPIED OR USED FOR PROCUREMENT OR MANUFACTURE WITHOUT EXPRESS WRITTEN PERMISSION.

REVISIONS			
REV	DESCRIPTION	DATE	APPROVED
AU	REVISED PER ECOM 16945	2/17/82	[Signature]



RED INDICATES ORIGINAL



- ⚠ IF PLASTIC STRAIN RELIEF REQUIRED, ADD SUFFIX "BT" TO MODEL NO. (ONLY AVAILABLE WITH -011, -013 & -013A)
- ⚠ CONTACT SUPPORT BUSHING REDD ON -002 THRU -007-022 & -027 ONLY
- 5. RF COAXIAL 75 OHM BNC FULL CRIMP CABLE PLUG
- ⚠ PIN, SLEEVE, CRIMP SLEEVE & CONTACT SUPPORT BUSHING ARE SUPPLIED LOOSE
- ⚠ SLEEVE REQUIRED ON -001 THRU -007 & -027 ONLY
- 2. FINISH: TFS-1A NICKEL
- 1. ALL DIM ARE IN INCHES

⚠ FOR CABLE GROUP -011 SUPPLY 1 EA ACCO11 FOR CABLE GROUPS -013 & -013A SUPPLY 1 EA ACCO13 MAY BE ASSEMBLED TO CABLE CONNECTOR ASSY USING 3M SCOTCHGRIP NO 1099 PLASTIC ADHESIVE, OR EQUIV

NOTES: UNLESS OTHERWISE SPECIFIED.

TROMPETER BRAND BY PER MIL-STD-100B DIMENSIONS ARE IN INCHES AND DECIMAL FRACTIONS UNLESS OTHERWISE SPECIFIED		UNLESS SPECIFIED XX ± .02 .XX ± .010 ANGLE ± 1°		 UPL220	
DATE	L. M. 7-30-09	MATERIAL	FINISH		
QTY	2M 8-5-09	FORM		B	14949
REV		DRWING NO.		1-0468	REV
NEXT ASSY	DO NOT SCALE DWG	SCALE	2/1	DATE	2/17/82
				SHEET	IC