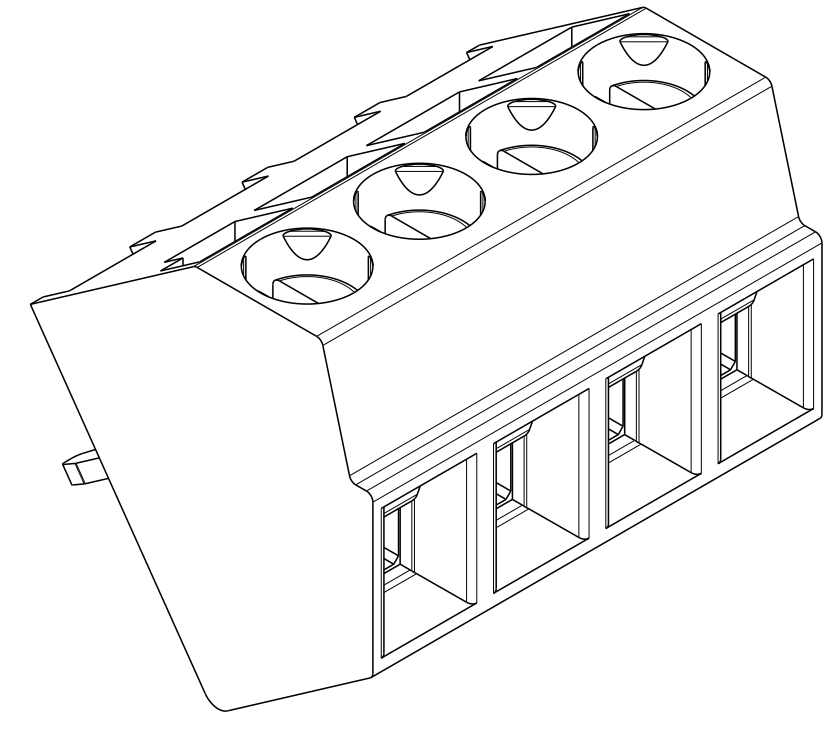
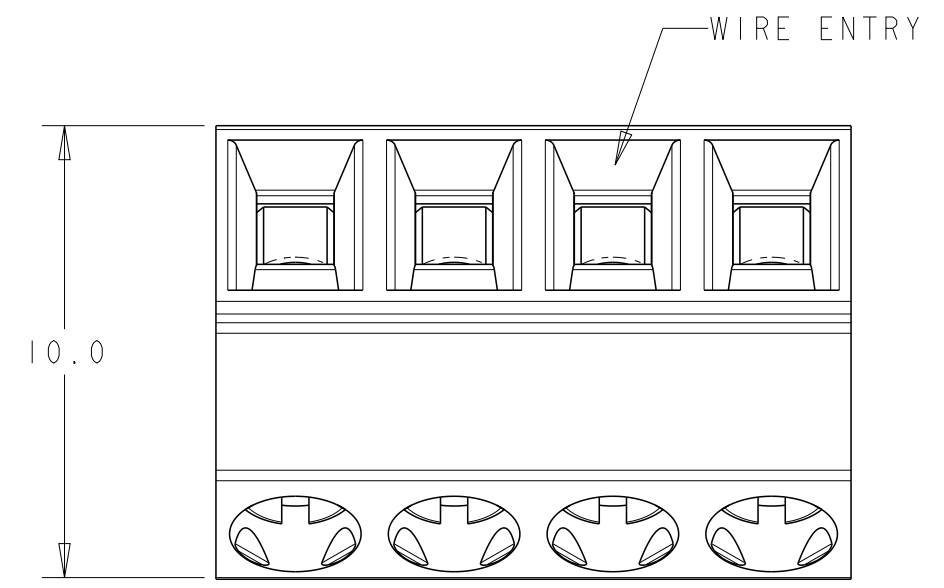


THIS DRAWING IS UNPUBLISHED. RELEASED FOR PUBLICATION 20  
 © COPYRIGHT 20 BY - ALL RIGHTS RESERVED.

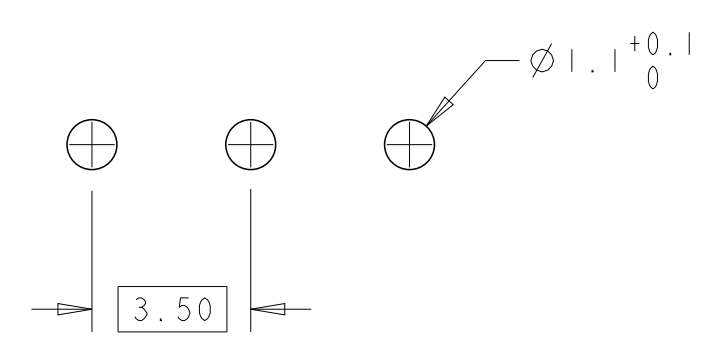
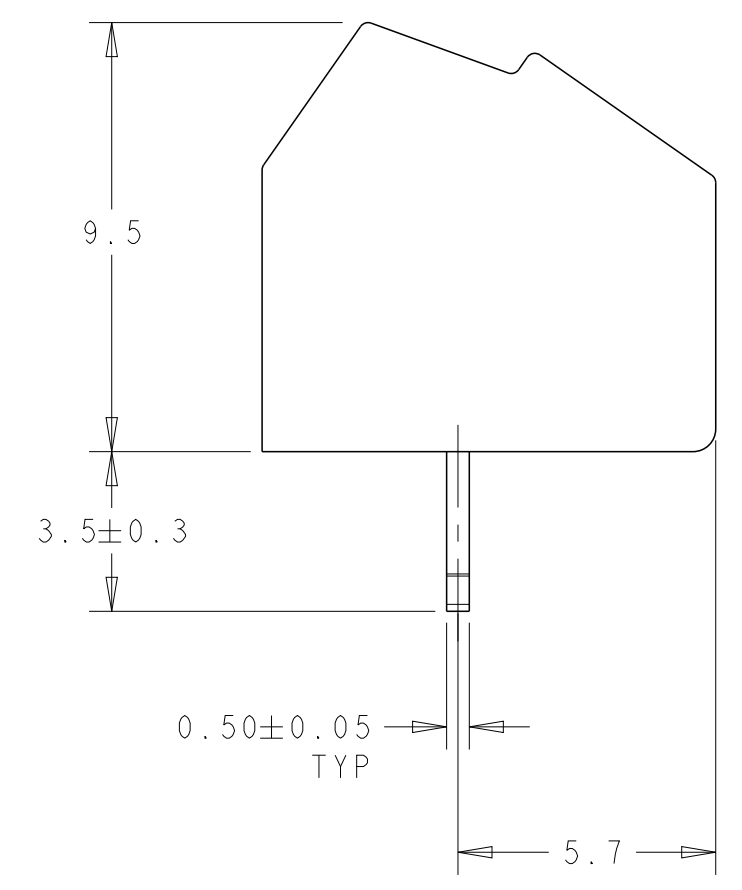
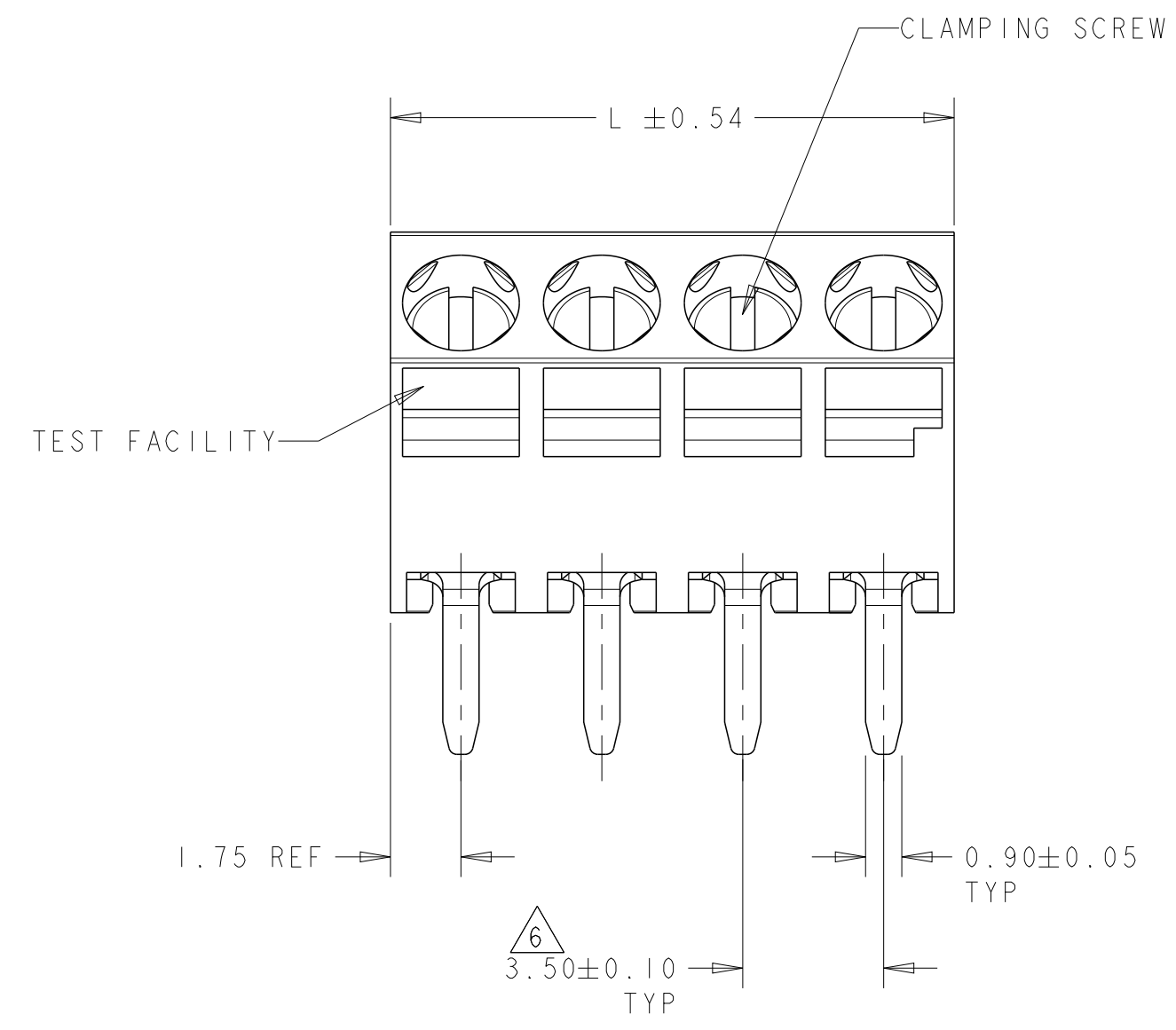
| REVISIONS |     |  |           |       |
|-----------|-----|--|-----------|-------|
| P         | LTR | DESCRIPTION  | DATE      | APVD  |
| B         |     | PACKAGING CHANGED FROM BLACK POLYURETHANE SPONGE TO TRAY | 26FEB2018 | RK PS |
|           |     |  |           |       |
|           |     |  |           |       |



NOTES:

- MATERIALS AND FINISH:  
 HOUSING: PA 6-6, UL 94 VO-RATED, COLOR: GREEN.  
 TERMINAL: COPPER ALLOY, TIN PLATED.  
 CLAMP: COPPER ALLOY, NICKEL PLATED.  
 CLAMPING SCREW: M2 COPPER ALLOY, NICKEL PLATED.
- MECHANICAL  
 WIRE STRIPPING LENGTH : 5.0-6.0 mm  
 MIN. PC BOARD HOLES DIAMETER : 1.1 mm  
 MAX. PC BOARD THICKNESS : 2.4 mm  
 RECOMMENDED TIGHTENING TORQUE FOR SCREW: 0.2 Nm.
- ELECTRICAL  
 WIRE RANGE : 16-28 AWG.  
 MAX. VOLTAGE : 300 V  
 MAX CURRENT : 12 A  
 CONTACT RESISTANCE : <15 m Ohm  
 INSULATION RESISTANCE : > 1000 M Ohm (500V DC)
- OPERATING TEMPERATURE RANGE: -40°C TO +110°C.
- PACKED IN TRAY.
- $\triangle$  TOLERANCE NOT CUMULATIVE.

1546556-4 AS SHOWN



RECOMMENDED PC BOARD LAYOUT

|          |       |            |                        |
|----------|-------|------------|------------------------|
| OBSOLETE | 63.00 | 18         | <del>1-1546556-8</del> |
|          | 59.50 | 17         | <del>1-1546556-7</del> |
|          | 56.00 | 16         | <del>1-1546556-6</del> |
|          | 52.50 | 15         | <del>1-1546556-5</del> |
|          | 49.00 | 14         | <del>1-1546556-4</del> |
|          | 45.50 | 13         | <del>1-1546556-3</del> |
|          | 42.00 | 12         | <del>1-1546556-2</del> |
|          | 38.50 | 11         | <del>1-1546556-1</del> |
|          | 35.00 | 10         | <del>1-1546556-0</del> |
|          | 31.50 | 9          | <del>1546556-9</del>   |
| OBSOLETE | 28.00 | 8          | <del>1546556-8</del>   |
|          | 24.50 | 7          | <del>1546556-7</del>   |
|          | 21.00 | 6          | <del>1546556-6</del>   |
|          | 17.50 | 5          | <del>1546556-5</del>   |
|          | 14.00 | 4          | <del>1546556-4</del>   |
|          | 10.50 | 3          | <del>1546556-3</del>   |
| OBSOLETE | 7.00  | 2          | <del>1546556-2</del>   |
|          | L     | NO OF POSN | PART NUMBER            |

|  |  |                           |   |               |
|--|--|---------------------------|---|---------------|
| THIS DRAWING IS A CONTROLLED DOCUMENT. |  | DWN S. WELDON 21APR2003   | TE Connectivity   |               |
| DIMENSIONS: mm                         |  | CHK C. RICHARD 21APR2003  |   |               |
| TOLERANCES UNLESS OTHERWISE SPECIFIED: |  | APVD C. RICHARD 21APR2003 | NAME  |               |
| 0 PLC ±                                |  | PRODUCT SPEC              | TERMINAL BLOCK, ANGLED ENTRY, 55 DEGREE, STACKABLE, 3.5mm PITCH |               |
| 1 PLC ±0.2                             |  | APPLICATION SPEC          | SIZE  | RESTRICTED TO |
| 2 PLC ±0.25                            |  | WEIGHT                    | A2  |               |
| 3 PLC ±0.000                           |  | CUSTOMER DRAWING          | CAGE CODE   |               |
| 4 PLC ±0.000                           |  | SCALE 6:1                 | DRAWING NO  |               |
| ANGLES ±                               |  | SHEET 1 OF 1              | REV B   |               |
| FINISH                                 |  |                           |   |               |
| MATERIAL SEE NOTES                     |  |                           |   |               |
| SEE NOTES                              |  |                           |   |               |