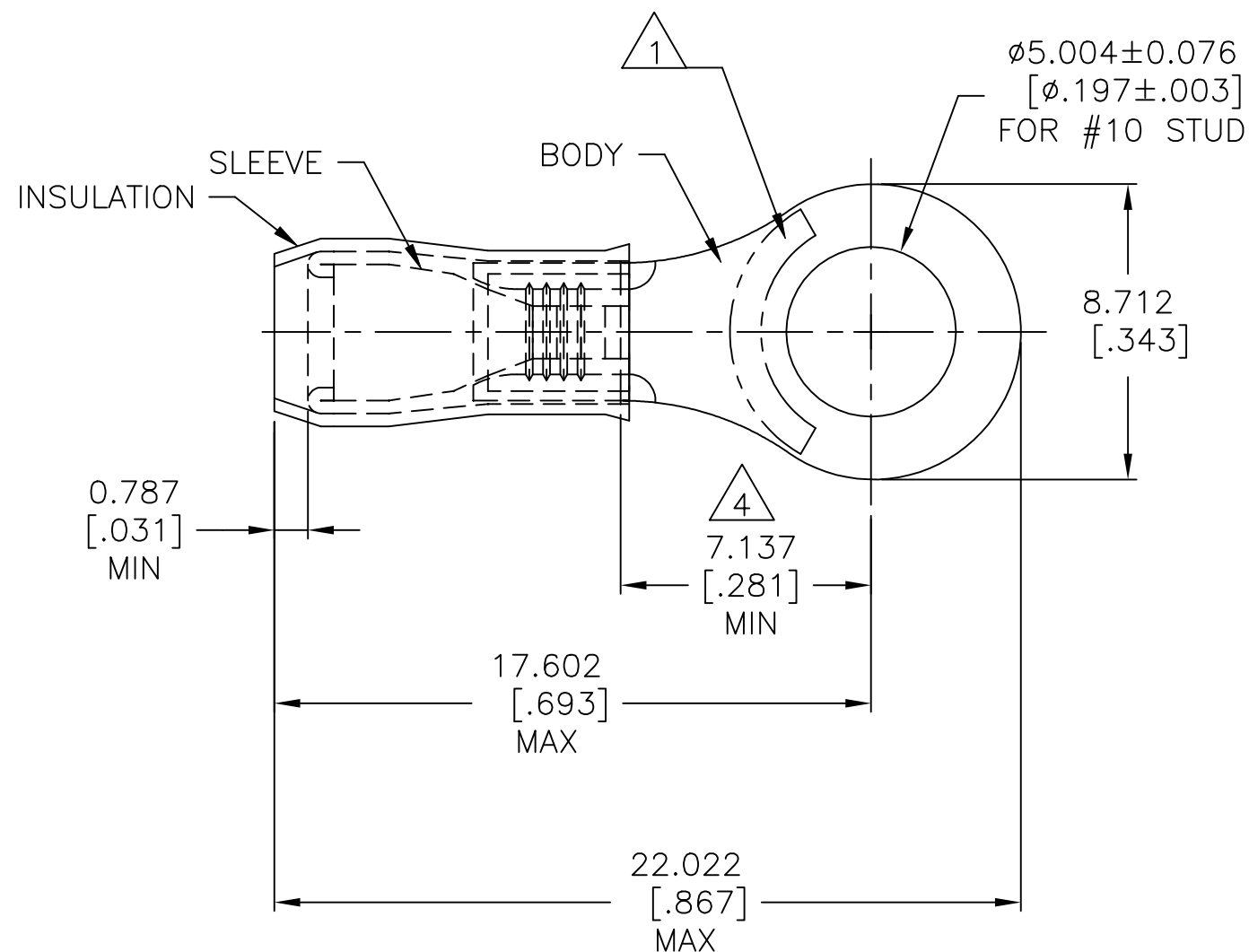


P	LTR	DESCRIPTION	DATE	DWN	APVD
G		REV PER ECR 09-025674	30NOV09	JR	TM
H		REVISED PER ECO-17-013200	07MAY2018	RS	DR

AMP
WIRE RANGE

14-12 AWG
SOLID OR STRANDED



- 1 STAMP AMP 14-12, LOCATION AS SHOWN.
- 2 WIRE INSULATION DIA RANGE IS $\phi 2.032 - \phi 3.175 [\phi .080 - \phi .125]$
- 3 BODY MATERIAL THK IS $0.762 \pm 0.051 [.030 \pm .002]$
- 4 APPLIES FROM CENTER OF STUD HOLE TO EDGE OF METAL WIRE BARREL
- 5 MATERIAL: BODY & SLEEVE - COPPER PER ASTM B-152
INSULATION: NYLON
- 6 FINISH: BODY & SLEEVE - TIN PLATE PER ASTM B-545
INSULATION: COLOR - WHITE
- 7 MAX RECOMMENDED OPERATING TEMP $105^{\circ}\text{C} [221^{\circ}\text{F}]$
- 8 VOLTAGE RATING: 300 V MAX
- 9 WIRE CROSS SECTIONAL AREA RANGE:
 $1.65 - 3.45 \text{mm}^2 [3,260 - 6,800] \text{ CMA}$

1000	LOOSE PIECE	152872
QTY	PACKAGING TYPE	PART NO

THIS DRAWING IS A CONTROLLED DOCUMENT.		DWN jr_ruth 23AUG07	STE TE Connectivity Ltd.														
DIMENSIONS: mm [INCHES]		CHK T MICHELUTTI 23AUG07															
TOLERANCES UNLESS OTHERWISE SPECIFIED:		APVD T MICHELUTTI 23AUG07	NAME														
<table border="0"> <tr><td>0 PLC</td><td>± -</td></tr> <tr><td>1 PLC</td><td>± -</td></tr> <tr><td>2 PLC</td><td>± -</td></tr> <tr><td>3 PLC</td><td>± 0.127 [.005]</td></tr> <tr><td>4 PLC</td><td>± -</td></tr> <tr><td>ANGLES</td><td>± 5°</td></tr> </table>		0 PLC	± -	1 PLC	± -	2 PLC	± -	3 PLC	± 0.127 [.005]	4 PLC	± -	ANGLES	± 5°	PRODUCT SPEC	RING TONGUE, PIDG, WIRE SIZE: 14-12 AWG		
0 PLC	± -																
1 PLC	± -																
2 PLC	± -																
3 PLC	± 0.127 [.005]																
4 PLC	± -																
ANGLES	± 5°																
MATERIAL		APPLICATION SPEC	SIZE	CAGE CODE	DRAWING NO												
5		6	114-2157	A300779	C=152872												
		FINISH	WEIGHT	RESTRICTED TO													
				-													
CUSTOMER DRAWING			SCALE	SHEET	REV												
			5:1	1 OF 1	H												