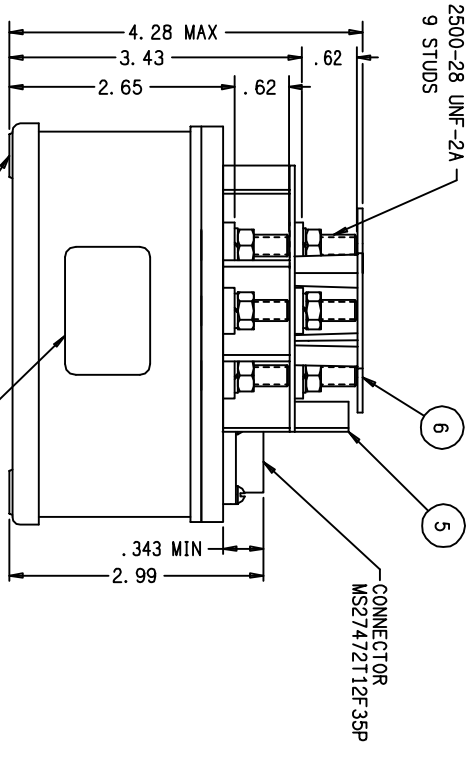
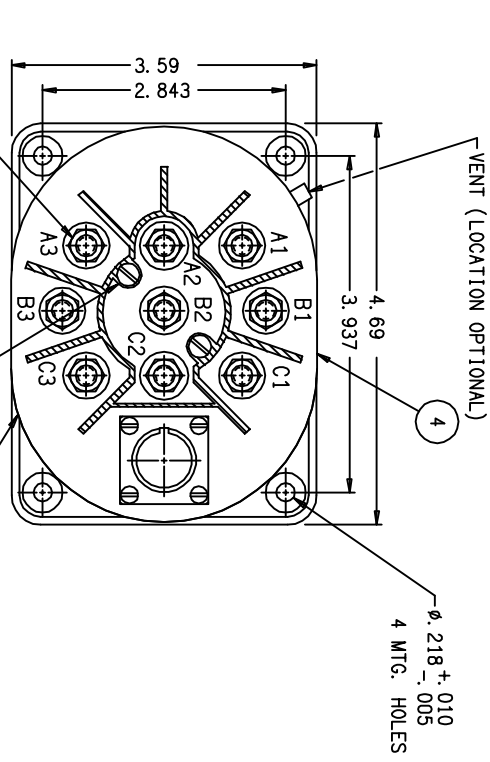
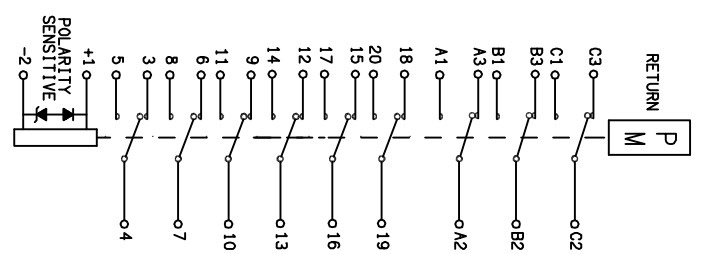


REV	DESCRIPTION	DATE	APPROVED
K 38541	PARTS LIST UPDATED	99/02/12	RS
L 43073	RELOCATED .62 DIM TO TOP OF TERMINAL	99/02/12	CC
M 09-0025474	ALIGN W/ GVI-CER-7218	09/06/02	DLM



FOUR MTG. HOLES SHALL BE PAINT FREE ON BOTH SIDES OF THE MOUNTING FLANGES FOR GROUNDING PURPOSES

CONFIGURATION MANAGED



**CONSTRUCTION**  
 MAIN CONTACTS VOLTAGE (NOMINAL) 115/200 VAC 400HZ  
 CURRENT RESISTIVE 60 AMPERES  
 INDUCTIVE 60 AMPERES  
 OVERLOAD (5 MIN) 75 AMPERES  
 OVERLOAD (10 SEC) 175 AMPERES  
 RUPTURE 600 AMPERES

**AUX CONTACTS**  
 CONFIGURATION VOLTAGE (NOMINAL) 115/200 VAC 400/60 HZ  
 CURRENT RESISTIVE 3 AMPERES  
 INDUCTIVE 1 AMPERES  
 LAMP 10 MILLIAMPERES  
 LOW LEVEL

**COIL DATA**  
 DUTY CYCLE 28 VDC  
 OPERATE VOLTAGE (MAX) 32 VDC  
 OPERATE VOLTAGE (MIN) 18 VDC  
 DROP-OUT VOLTAGE 2-7 VDC  
 HOLD VOLTAGE 7 VDC  
 COIL CURRENT (MAX) .40 AMPERES AT 20°C 28 VDC  
 OPERATE TIMES AT 20°C 28 VDC  
 AT -55°C 32 VDC  
 AT 71°C 18 VDC  
 PICKUP TIME 50 MS (MAX) 10 MS (MIN) 100 MS (MAX)  
 TIMING (MAX) 25 MS (MAX) 40 MS (MAX) 10 MS (MIN)  
 BOUNCE (MAX) 2 MILLISECONDS  
 STAGGER TIME (MAX) 3 MILLISECONDS  
 ENVIRONMENTAL ALTITUDE (MAX) 50,000 FEET  
 LIFE ELECTRICAL (MIN) 50,000 CYCLES  
 LIFE MECHANICAL (MIN) 100,000 CYCLES  
 WEIGHT (MAX) 2.7 LBS

**ENVIRONMENTAL**  
 ALTITUDE (MAX) 50,000 FEET  
 LIFE ELECTRICAL (MIN) 50,000 CYCLES  
 LIFE MECHANICAL (MIN) 100,000 CYCLES  
 WEIGHT (MAX) 2.7 LBS

QTY	PART OR IDENTIFYING NO	DESCRIPTION	NOTE
1	50407-074	NUT 1/4-28 X 3/8 X 3/16	BRASS
2	51804-040	LOCKWASHER #4 SPLIT	S. STEEL
2	51204-721	SCREW #4-40 X 1.50 PAN HD.	STEEL
1	SA120B10	PRIMARY ASSEMBLY	
1	TS018001	TOP SHIELD	
1	TS017020	BOTTOM SHIELD ASS'Y	
1	WD016001	SCHEMATIC	
1	16043-001	NAMEPLATE	BRONZE
2	51807-034	LOCKWASHER 1/4 SPLIT	BRASS
1	50407-074	NUT 1/4-28 X 3/8 X 3/16	BRASS

UNLESS OTHERWISE SPECIFIED DIMENSIONS ARE IN INCHES TOLERANCES IN		GULFSTREAM	
F. 06	±.010	F. 5°	
DR BY CSC100/09/12			
CHK BY CC 100/09/14			
ENGR MRR 100/09/14			
MFG MES100/09/15			
SIZE	CODE IDENT	DRAWING OR SPECIFICATION	
A	74063	SA120B	

SCALE 1/2 SHEET

REF TE P/N 1616042-3

