

4

3

2

1

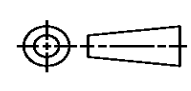
THIS DRAWING IS UNPUBLISHED. RELEASED FOR PUBLICATION
© COPYRIGHT ALL RIGHTS RESERVED.

LOC	DIST	REVISIONS			
P	LTR	DESCRIPTION	DATE	DWN	APVD
	C1	ECR-16-009824	28JUL2016	GK	SD

REPLACED BY OCEAN STYLE APPLICATOR PART NUMBER 2836203-1

FOR REPLACEMENT PARTS FOR APPLICATOR 1426096
REFER TO ADDITIONAL PAGE(S). SPARE PARTS KIT (IF LISTED)
WILL REMAIN AVAILABLE.

THE REPLACEMENT OCEAN STYLE APPLICATOR HAS THE
SAME TERMINATOR/PRESS INTERFACE AS APPLICATOR
1426096

THIS DRAWING IS A CONTROLLED DOCUMENT.		DWN	GOPALAKRISHNA HV		
DIMENSIONS:		CHK	GOPALAKRISHNA HV		
		APVD	STOUGH DALE		
		PRODUCT SPEC	NAME		
TOLERANCES UNLESS OTHERWISE SPECIFIED:		APPLICATION SPEC	SIDE FEED HD-I APPLICATOR		
0 PLC ±		SIZE	CAGE CODE	DRAWING NO	RESTRICTED TO
1 PLC ±		A3		©- 1426096	
2 PLC ±		CUSTOMER ACCESSIBLE PRODUCTION DRAWING		SCALE	SHEET 1 OF 2
3 PLC ±					REV C1
4 PLC ±					
ANGLES ±					
MATERIAL	FINISH				



THIS DRAWING IS A CONTROLLED DOCUMENT. 1426096

PART NUMBER	REV	FIRST USED	TERMINATOR	FEED TYPE	DESCRIPTION
1426096-1	C	-	LEADMAKER	MECH POST FEED	CUTS CARRIER
1426096-2	C	-	BENCH	MECH PRE FEED	CUTS CARRIER
1426096-6	C	-	LEADMAKER	MECH POST FEED	CONTINUOUS CARRIER
7-1426096-1	C	-	LEADMAKER	MECH POST FEED	-1 AND SPARE PARTS
7-1426096-2	C	-	BENCH	MECH PRE FEED	-2 AND SPARE PARTS
7-1426096-6	C	-	LEADMAKER	MECH POST FEED	-6 AND SPARE PARTS
7-1426096-7	A	-	-	-	SPARE PARTS KIT

CRIMP DATA		AMP TERMINAL	AMP CRIMP SPECS
TERMINAL NAME: .250 FASTIN-FASTON TAB ACC.DIN 46343			
CRIMP	SIZE	TYPE	RANGE
WIRE	2.03 [.080 IN]	F	0.5mm ² - 1.0mm ²
INSUL	2.79 [.110 IN]	OV	1.4-2.10 [.055-.083 IN]
WIRE STRIP LENGTH		APPL INSTRUCTION	
3.96-4.78 [.156-.188 IN]		408-8322	

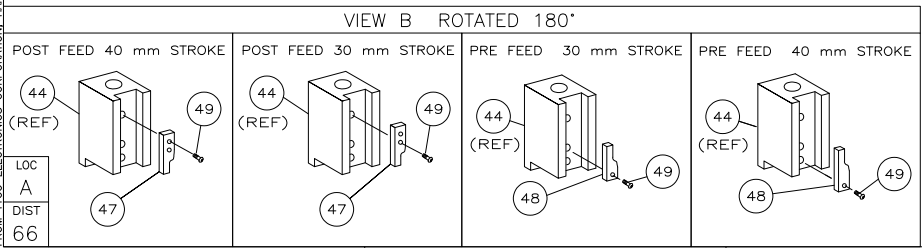
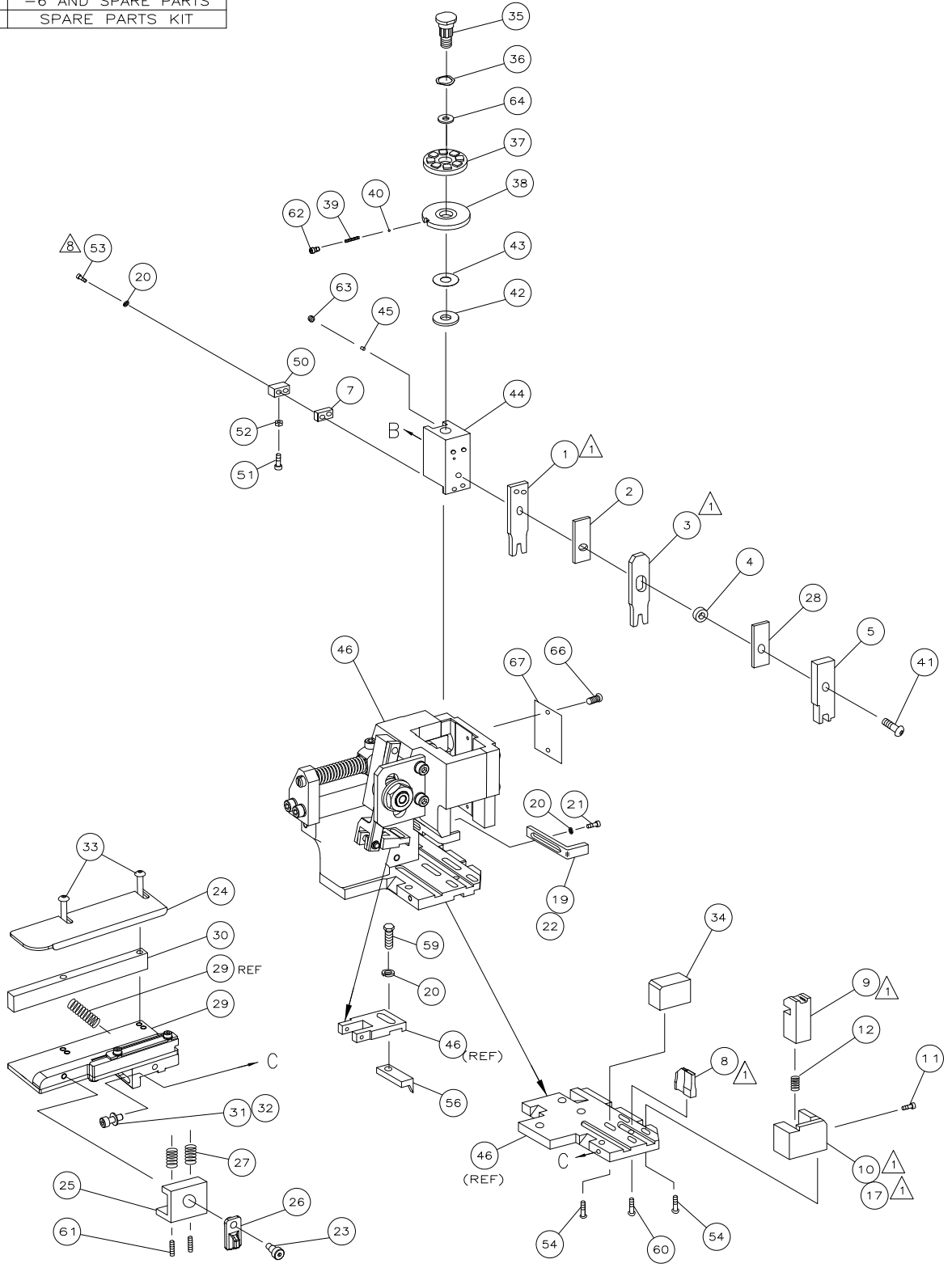
TERMINAL	FEED
APPL SPEC 114-18022	16.5 [.650 IN]

TERMINALS APPLIED				
963951	-	-	-	-
-	-	-	-	-
-	-	-	-	-
-	-	-	-	-
-	-	-	-	-
-	-	-	-	-
-	-	-	-	-
-	-	-	-	-
-	-	-	-	-
-	-	-	-	-

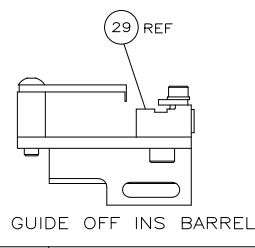
WIRE SIZE	CRIMP HEIGHT	PIN PN & LENGTH [IN]
1.00mm ²	1.56 ±0.05 [.061 ±.002 IN]	354779-6 [.3020]
0.75mm ²	1.47 ±0.05 [.058 ±.002 IN]	1-354779-2 [.3050]
0.50mm ²	1.38 ±0.05 [.054 ±.002 IN]	2-354779-1 [.3095]

SET UP GAGE	LAYOUT
458637-3	L1426096

- 1. RECOMMENDED SPARE PARTS.
- 2. GREASE RAM, CAM, CAM FOLLOWER AND FEED ROD LIGHTLY.
- 3. LUBRICATE DAILY PER THE APPLICATOR INSTRUCTION SHEET SUPPLIED WITH THE APPLICATOR.
- 4. CUT TO LENGTH AT ASSY.



QTY REQD PER ASSY	DESCRIPTION	ITEM NO
-	1426096	73
-	1338705-1	72
-	PRINT, APPLICATOR LOG SHEET	71
-	DOCUMENTATION PACKAGE	70
-		69
-		68
-	461264-1	67
-	21017-2	66
-		65
-	986950-1	64
-	3-18031-0	63
-	18023-9	62
-	2-18032-5	61
-	18024-7	60
-	5-18022-2	59
-		58
-		57
-	1338685-1	56
-		55
-	18024-8	54
-	1-18023-5	53
-	18030-1	52
-	811242-5	51
-	690753-2	50
-	18024-3	49
-	1338675-1	48
-	1338676-1	47
-	1320999-3	46
-	690191-1	45
-	1338660-1	44
-	690125-1	43
-	690124-1	42
-	2-18024-6	41
-	23241-1	40
-	2-22278-7	39
-	1320922-1	38
-	354777-1	37
-	22480-5	36
-	690212-1	35
-	1320934-5	34
-	1-18024-0	33
-	18027-2	32
-	1-18023-2	31
-	1320908-4	30
-	1633073-2	29
-	1-455888-5	28
-	2-22284-0	27
-	356835-1	26
-	240792-1	25
-	1320928-1	24
-	980371-4	23
-	690472-2	22
-	1-18023-1	21
-	18025-2	20
-	690472-1	19
-		18
-	1338684-1	17
-		16
-		15
-		14
-		13
-	3-22280-3	12
-	356885-4	11
-	1320921-1	10
-	454276-1	9
-	1-1333204-4	8
-	5-240641-1	7
-		6
-	1-455889-4	5
-	1-238011-0	4
-	1-854830-5	3
-	1-455888-4	2
-	1-456405-5	1



DIMENSIONS:		TOLERANCES UNLESS OTHERWISE SPECIFIED:	
INCHES:	0.001	PLC	± .001
ANGLES:	± .001	2.0 PLC	± .002
SURFACE TEXTURE:	√	3.0 PLC	± .005
DRAWING NO: 1426096		SCALE: A1	
REV: C		SHEET: 1 OF 1	