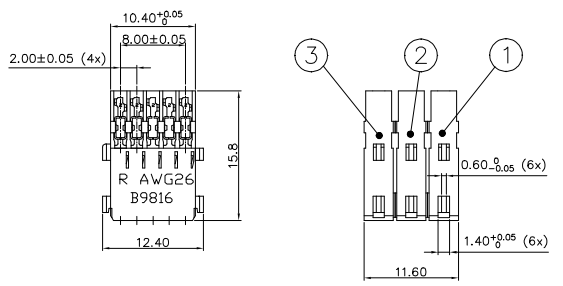
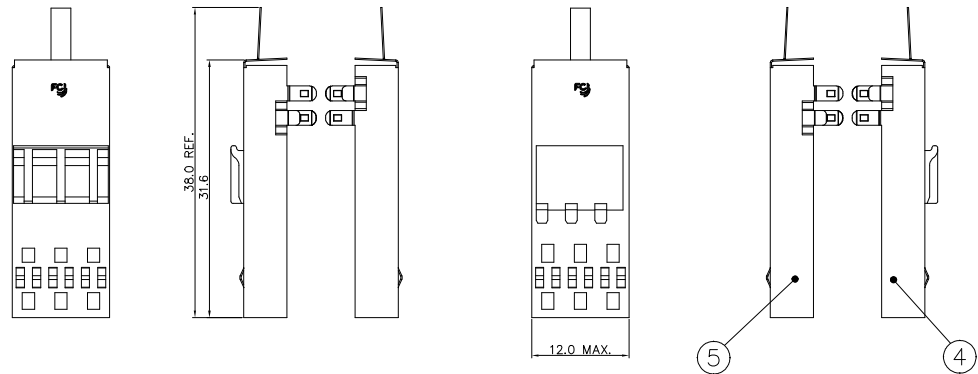
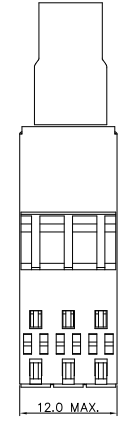
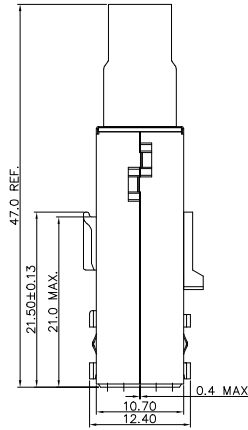
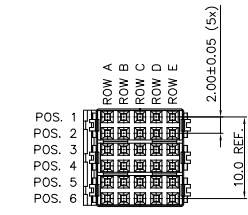
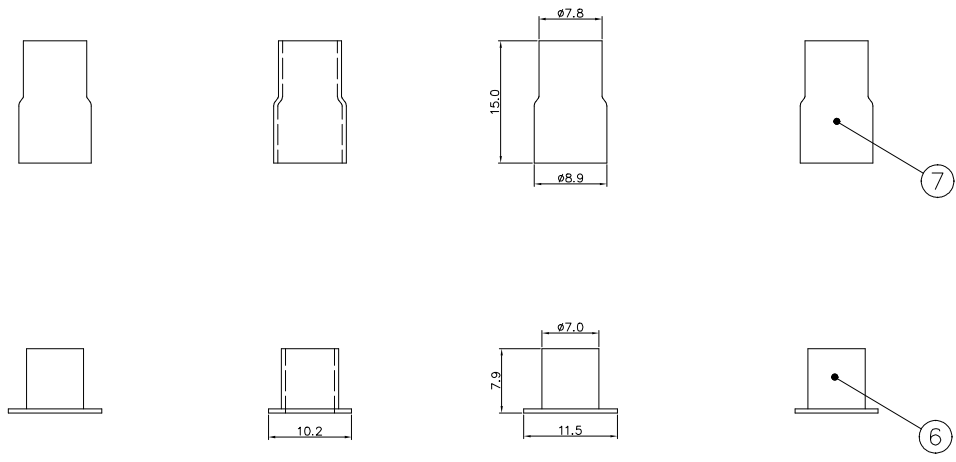


PART NUMBER  
HM2C11D\_C021L9LF



**PERFORMANCE CHARACTERISTICS:**  
 VOLTAGE RATING : 250 VAC.  
 CURRENT RATING : 1.0 A AT 70°C.  
 INSULATION RESISTANCE : 10<sup>9</sup> MΩ MIN. AFTER TEST.  
 DIELECTRIC WITHSTANDING VOLTAGE : 500 V.  
 CONTACT RESISTANCE : 20 mΩ MAX. AFTER TEST.  
 OPERATING T : -55°C TO +125°C.  
 INSERTION FORCE : 0.75 N MAX. PER CONTACT.  
 WITHDRAWAL FORCE : 0.15 N MIN. PER CONTACT.

**MATERIALS:**  
 TERMINAL BLOCK : GLASS REINFORCED THERMOPLASTIC UL94-V0.  
 CONTACTS : PHOSPHOR BRONZE.  
 PERFORMANCE : TELCORDIA CO.  
 SHIELDING COVER: STAINLESS STEEL  
 INNER FERRULE : Sn PLATED E-Cu  
 OUTER FERRULE : Sn PLATED E-Cu

THE APPLICATION SPECIFICATION NO. : GS-20-096  
**WIRE CHARACTERISTICS:**  
 INSULATION DIAMETER 1,20 MM MAX.  
**CABLE CHARACTERISTICS:**  
 SEE DRAWING BS,A ,202664,001  
**PART NUMBERS :**  
 HM2C11DCC021L9LF : CONNECTOR FOR WIRE SIZE AWG28,AWG30  
 HM2C11D2C021L9LF : CONNECTOR FOR WIRE SIZE AWG26

Item	Qty	Description
7	1	6X5 POS. SHIELDED HM2 OUTER FERRULE
6	1	6X5 POS. SHIELDED HM2 INNER FERRULE
5	1	6X5 POS. SHIELDED HM2 COVER PART
4	1	6X5 POS. SHIELDED HM2 COVER PART (LOCKING SIDE)
3	1	2X5 POS. STACKABLE CABLE CONN. WITHOUT COVER (LEFT)
2	1	2X5 POS. STACKABLE CABLE CONN. WITHOUT COVER (MIDDLE)
1	1	2X5 POS. STACKABLE CABLE CONN. WITHOUT COVER (RIGHT)

**Notes:**  
 1. WHEN PART NUMBER WITH "LF" SUFFIX, THEN THE LF CONTACTS MUST BE USED .  
 2. THIS PRODUCT WITH "LF" SUFFIX MEETS EUROPEAN UNION DIRECTIVES AND OTHER COUNTRY REGULATIONS AS DESCRIBED IN GS-22-008 .

mat'l. code		surface <input checked="" type="checkbox"/> ISO 1302 tolerance <input checked="" type="checkbox"/> ISO 406/ISO 1101		projection	product family Millipacs
ltr	ecn no	dr	date	tolerances unless otherwise specified	title 6X5 POS. HM2 STACKABLE CABLE CONN WITH COVER
A	-	KN	21/01/2003	angle  .X±0.50	dwg no sheet 1 of 1 size BSE202596001 A4
B	DG08-0117	Nickor	18/03/2008	tolerances unless otherwise specified	
C	ELX-N-004869	A.ZH	04/08/2011	0°±2' .XXX±.10	
D	ELX-N-33153	DAISY	10/04/2019	dr A.Jonssens 21/12/1998 eng G.Droesbeke 25/06/1999 chr G.Droesbeke 25/06/1999 app G.Droesbeke 25/06/1999	type Product Customer Drawing
sheet index	revision	D	sheet 1		