



EP7 Power Transformer

AEP7-709I

- EP7 Package in SMD
- Operating temperature range: -40°C to +85°C
- Reflow Condition:  
Maximum reflow temperature is 250°C/-5°C  
time is 20~40 sec. (Refer to IPC/JEDECJ-STD-020 standard)
- Meets the specifications for supplementary insulation per UL60950-1, CSA60950-1, EN60950-1, IEC60950-1 with working voltage of 250V.

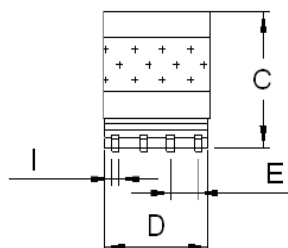
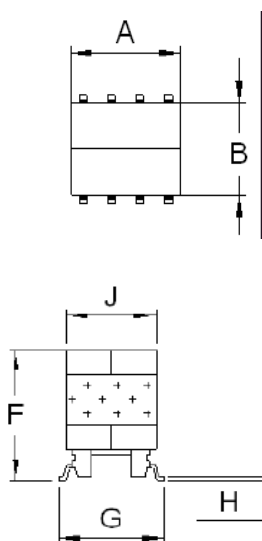
Electrical Specifications @25°C				
Part Number	Turns Ratio @10KHz, 0.1V (1-4):(8-5)	Inductance Lp @10KHz,0.1V (1-4), (2+3 short)	Leakage Inductance Ls @100KHz,0.1V (1-4), (2+3,5+8 short)	Isolation Voltage @ Vac, 2 sec, 1mA (1-8), (2+3 short)
AEP7-709I	4:1 (2%)	400uH (±10%)	1.5uH Max	1875

Electrical Specifications @25°C				
Part Number	DCR (1-4), (2+3 short)	DCR (8-5)	Interwinding Capacitance Cp@100 KHz, 0.1V (1-5), (2+3,5+8 short)	THD @100KHz,1.7Vrms Across (1-4) 100 ohm Input, 6.25 ohm load at (8-5),(2+3 short)
AEP7-709I	0.565 Ω Max.	0.082 Ω Max.	50pF Max	-75dB Max

All specifications subject to change without notice.

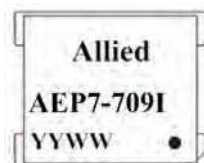
MECHANICAL



Unit	mm	inch
A	10.8 max.	0.425 max.
B	10.0 max.	0.394 max.
C	9.20	0.362
D	9.27	0.365
E	2.5	0.098
F	10.9 max.	0.429 max.
G	8.8	0.346
H	0.3±0.1	0.012±0.039
I	0.7	0.027
J	8.0	0.314
PAD A	9.55	0.375
PAD B	7.15	0.281
PAD C	7.5	0.295
PAD D	2.5	0.098
PAD E	1.2	0.047

Unless otherwise specified, all tolerances are  
± 0.25 mm  
± 0.01 inch

Marking



SCHEMATICS

