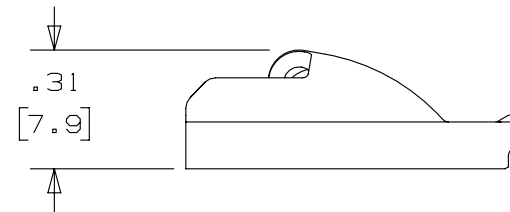
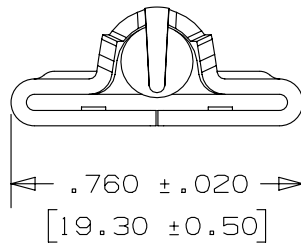
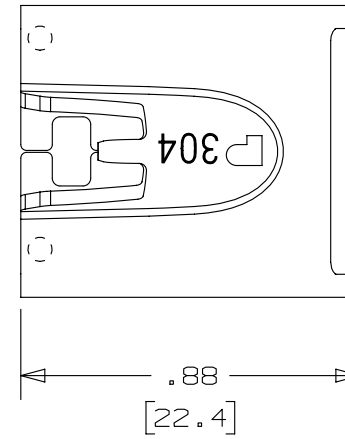



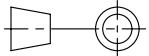
THIS COPY IS PROVIDED ON A RESTRICTED BASIS AND IS NOT TO BE USED IN ANY WAY DETRIMENTAL TO THE INTERESTS OF PANDUIT CORP.

NOTES:

1. TO BE USED WITH PANDUIT METAL BANDING MBSH-TR
2. INSTALLATION TOOL: RT2HT, PBTMT, RT2HTN
3. BRACKETS [ ] DENOTES DIMENSIONS IN MILLIMETERS
4. MINIMUM LOOP TENSILE STRENGTH: 450 lbs (2002 newtons)
5. TOLERANCES:
  - .X = ±.030 [ .762 ]
  - .XX = ±.020 [ .508 ]
  - .XXX = ±.010 [ .254 ]
  - ANGLES = ±2°
6. MATERIAL: 304 STAINLESS STEEL



REV	DATE	BY	CHK	APR	DESCRIPTION	ECN
03A	11/13	MIM	MIM	RGB	1. PART NUMBER MTHSH-C WAS INCORRECTLY SPECIFIED MTHS-CH	SSECN01115
02A	4/13	JAMB	MIM	RGRO	UPDATE DRAWING TO NEW GLOBAL PANDUIT TITLE BLOCK WITH PANDUIT LOGO	SSECN01049
01A	7/11	JAMB	MIM	---	ADDED INSTALLATION TOOLS PBTMT & RT2HTN	-----
00A	10/08	JAMB	SKB	---	ORIG CAD FILE SPEC WAS S41204_00. NOTE #2 - APPLICATION TOOL RT1HT REPLACED BY RT2HT	-----
00	8/05	JAMB	EJD	---	DRAWING RELEASED	SS00016

TITLE <b>METAL LOCKING TIE HEAD-SUPER HEAVY DUTY FOR UNCOATED BANDING PART NO. MTHSH-C</b> CUSTOMER DRAWING					
ITEM REVISION NAME N41204BS/03					
DATASET FILE NAME N41204BS_DC/03A					
UNLESS OTHERWISE SPECIFIED, DIMENSIONAL TOLERANCES ARE: IN [ mm ] .x ± .1 [ 2.54 ]      .xxx ± .005 [ .127 ] .xx ± .01 [ .25 ]      ANGLES ± 5 °					MATERIAL:  SEE NOTES
 THIRD ANGLE PROJECTION					DRAWING NUMBER: N41204BS_DC
DRAWN BY JAMB	DATE 8/9/05	CHK EJD	SCALE 2:1	SHT 1 OF 1	SIZE A