

REVISION A/H#

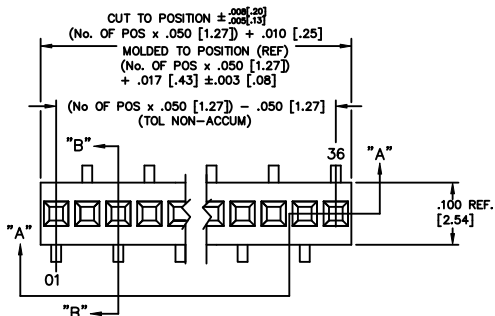
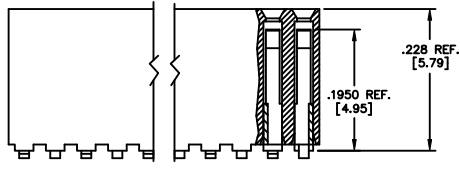
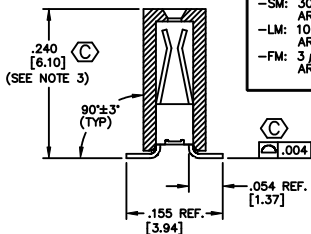
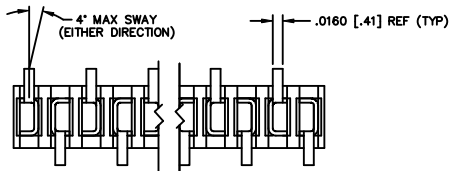


FIG 1



SECT: "A-A"



SECT: "B-B"

RSM-1XX-XX-XXX-S-X-XX

BODY LENGTH SPECIFICATION  
-02 THRU -36 POSITIONS  
(SEE NOTE 2)

LEAD STYLE  
-02: C-64-02-X

PLATING SPECIFICATIONS

- S: 30μ SELECTIVE GOLD IN CONTACT AREA, MATTE TIN ON TAIL
- F: 3μ FLASH SELECTIVE GOLD IN CONTACT AREA, MATTE TIN ON TAIL
- L: 10μ LIGHT SELECTIVE GOLD IN CONTACT AREA, MATTE TIN ON TAIL
- T: MATTE TIN CONTACT AND TAIL
- STL: 30μ SELECTIVE GOLD IN CONTACT CONTACT AREA, TIN/LEAD (90/10+/-5%) TAIL
- TM: MATTE TIN CONTACT AND TAIL
- SM: 30μ SELECTIVE GOLD IN CONTACT AREA, MATTE TIN ON TAIL
- LM: 10μ LIGHT SELECTIVE GOLD IN CONTACT AREA, MATTE TIN ON TAIL
- FM: 3μ FLASH SELECTIVE GOLD IN CONTACT AREA, MATTE TIN ON TAIL

UNLESS OTHERWISE NOTED  
DIMENSIONS ARE IN INCHES  
TOLERANCES ARE:  
ONE PLACE DECIMALS: ±.1  
TWO PLACE DECIMALS: ±.01  
THREE PLACE DECIMALS: ±.005  
FOUR PLACE DECIMALS: ±.0020  
ANGLES  
±5°

TITLE: RECEPTACLE SURFACE MOUNT (SINGLE ROW)

DWG NO: RSM-1XX-XX-XXX-S-X-XX  
SHEET 1 OF 1

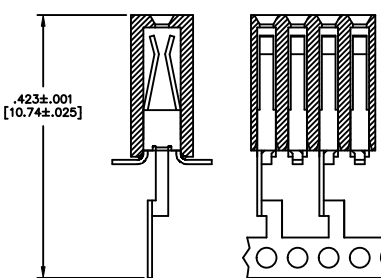
- PACKAGING  
BLANK: TUBES (SEE NOTE 9)  
-TR: TAPE & REEL (SEE NOTES 10 & 11)  
-FR: FULL REEL QTY TAPE & REEL (SEE NOTES 10 & 11)
- OPTIONS  
-P: PICK AND PLACE PAD (USE PPP-20)(SEE FIG. 2) (AVAILABLE ON POS. 6 THRU 36 ONLY)  
-K: POLYIMIDE FILM PAD (AVAILABLE ON POS. 7 THRU 36 ONLY) (SEE FIG. 3) (USE K-DOT-.138-.250-.005)

BODY SPECIFICATION  
-S: SINGLE ROW (USE RSM-XX-S)

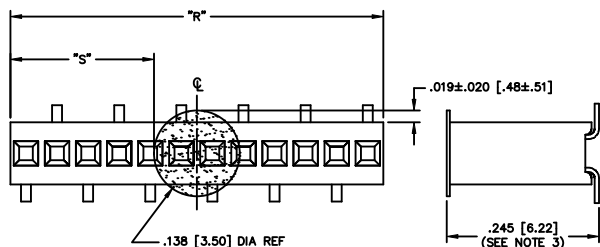
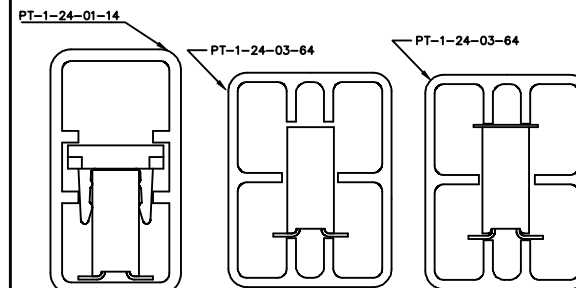
NOTES:

1. PIN ONE TO BE IN DIRECTION OF ARROW ON TUBE
2. FOR ODD POSITIONS, LOSE ONE PIN PER CUT
3. FOR EVEN POSITIONS, LOSE TWO PINS PER CUT
4. MEASURED AT BEND RADIUS
5. MINIMUM RETENTION: 1.0 LB.
6. CUT FLASH TO BE .010" MAX WITH NO FLASH ALLOW IN HOLES OR EXTENDING BELOW LEADS.
7. CONTACTS NOT TO BE INTERLEAVED.
8. (C) REPRESENTS A CRITICAL DIMENSION.
9. INSULATOR MATERIAL: BLACK, LCP, UL 94 V0
10. TUBES ARE STANDARD PACKAGING.
11. ORDERS WILL BE PACKAGED ACCORDING TO THE SAMTEC PACKAGING EFFICIENCY STANDARDS (SPES) FOUND ON WWW.SAMTEC.COM.
12. ATTACH LABEL TO EACH REEL.

OPTION	TUBE	PLUG
-P	PT-1-24-01-14	TP-03
-	PT-1-24-03-64	TP-24
-K	PT-1-24-03-64	TP-24



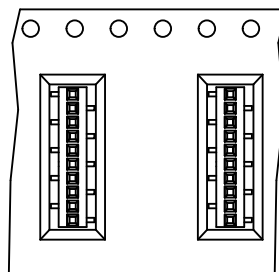
IN-PROCESS VIEW



"R" = USE MEASURED DIMENSION (REF)  
"S" = {"R" - .138 [3.50]} / 2 ±.020 [.51]

FIG 3

-K: POLYIMIDE FILM PAD  
AVAILABLE ON POS 7 - 36 ONLY

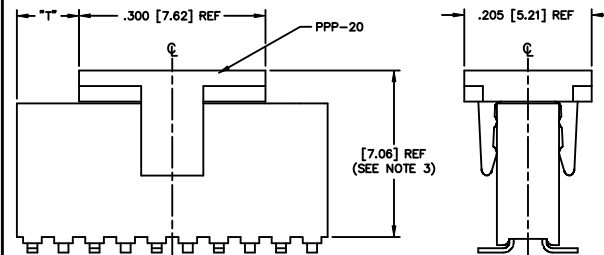


USER DIRECTION OF UNREELING →

POCKET NOT DETAILED

FIG 4

-TR: TAPE AND REEL



"R" = USE MEASURED DIMENSION (REF)  
"T" = {"R" - .300}/2 ±.020

FIG 2

-P: PICK AND PLACE PAD  
AVAILABLE ON POS 6 - 36 ONLY

PROPRIETARY NOTE  
THIS DOCUMENT CONTAINS INFORMATION THAT IS UNCLASSIFIED AND IS BEING RELEASED TO THE PUBLIC. IT IS THE PROPERTY OF SAMTEC AND IS TO BE USED ONLY FOR THE PURPOSES SPECIFIED IN THE ORIGINAL ORDER. IT IS NOT TO BE REPRODUCED, COPIED, OR TRANSMITTED IN ANY FORM OR BY ANY MEANS, ELECTRONIC OR MECHANICAL, INCLUDING PHOTOCOPYING, RECORDING, OR BY ANY INFORMATION STORAGE AND RETRIEVAL SYSTEM, WITHOUT THE WRITTEN PERMISSION OF SAMTEC.

520 PARK EAST BLVD. NEW ALBANY, INDIANA 47150  
PHONE (812) 944-9733 P.O. BOX 1147  
CODE 95322

MADE BY: GREG REINER 11-24-02  
CHECKED BY: [ ]

520 PARK EAST BLVD. NEW ALBANY, INDIANA 47150  
PHONE (812) 944-9733 P.O. BOX 1147  
CODE 95322

RSM-1XX-XX-XXX-S-X-XX  
SHEET 1 OF 1