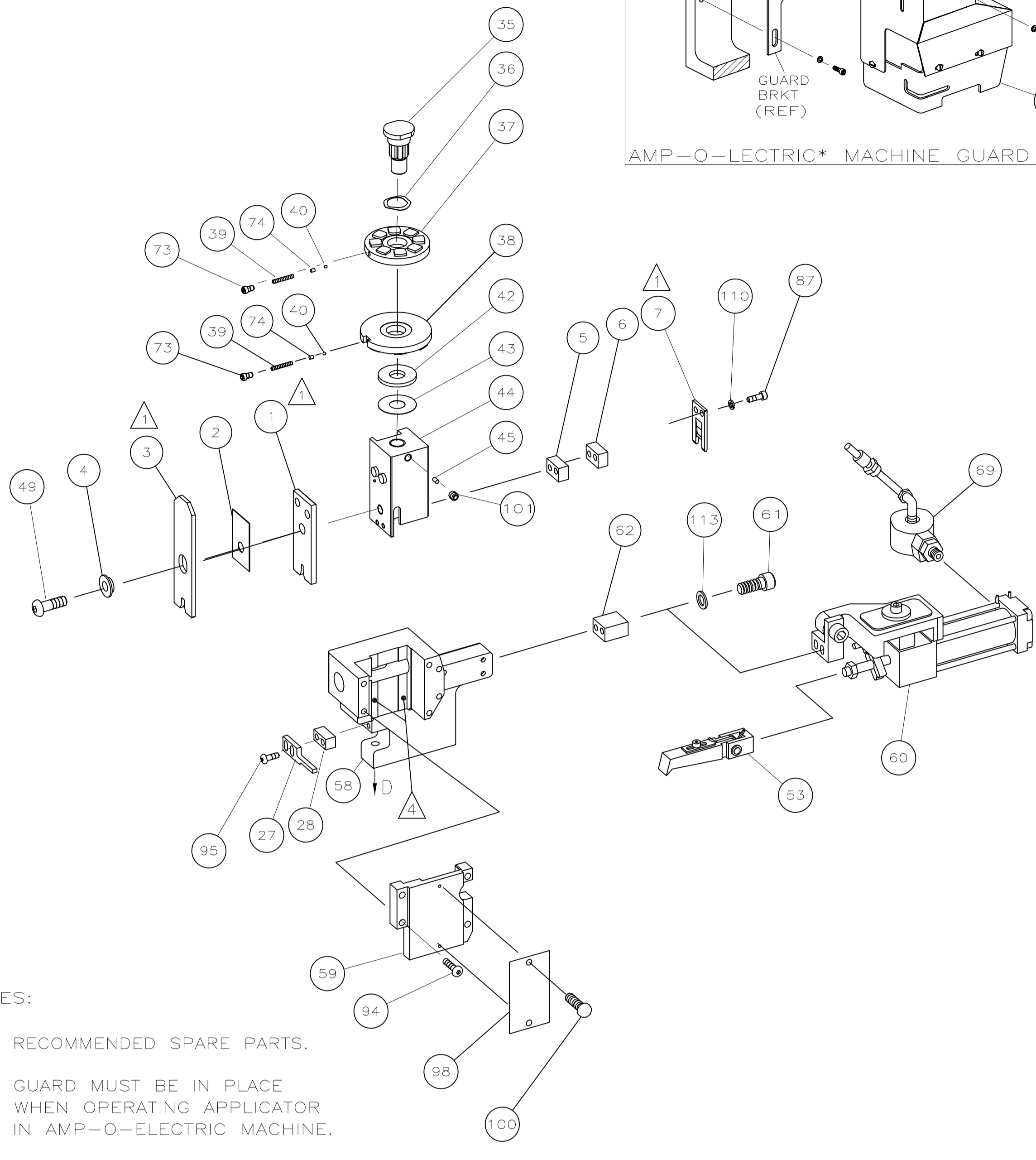
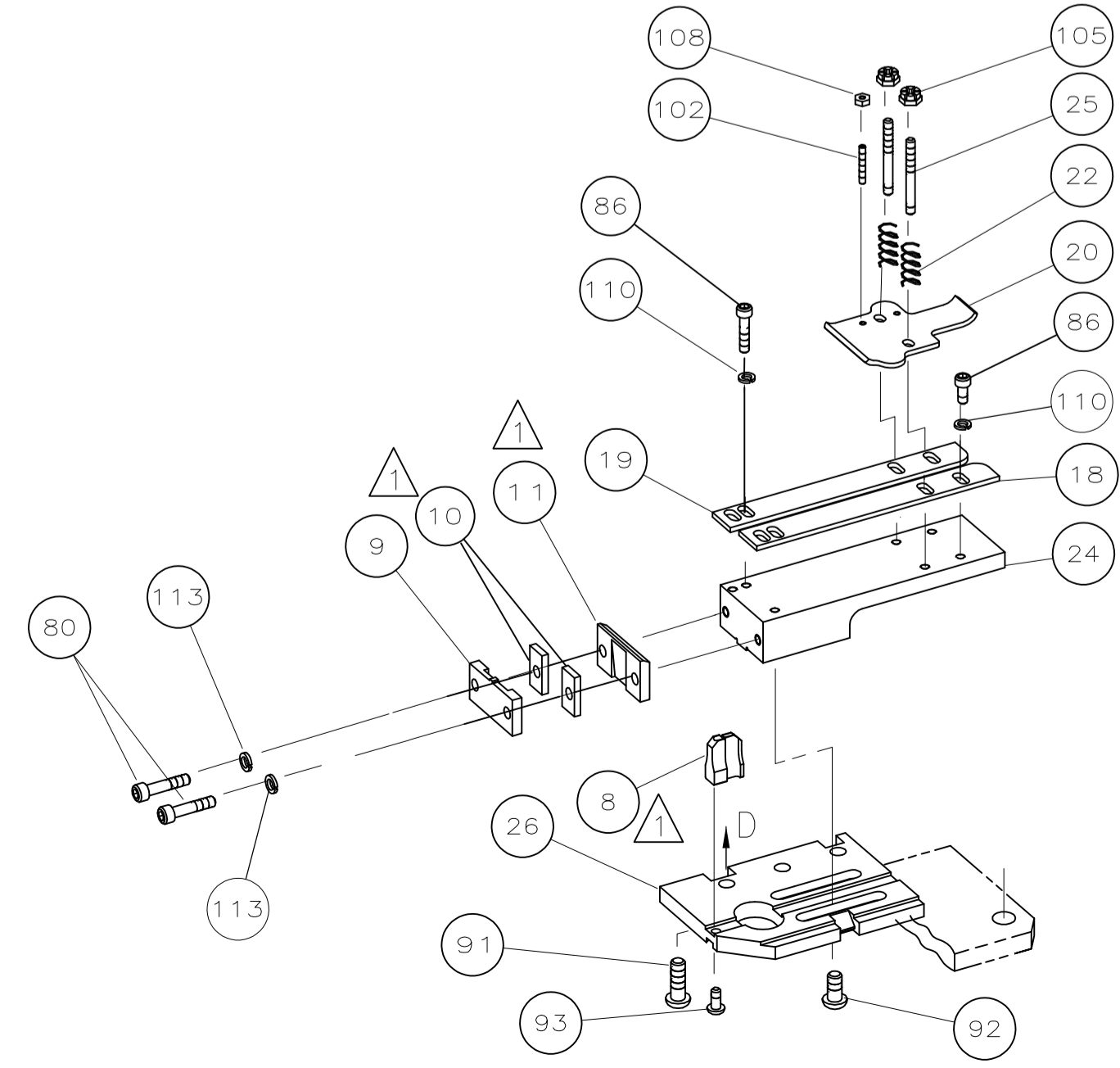


| TERMINAL NAME: | | CRIMPING DATA | | | |
|-------------------------|-------------|---------------------|--------------|-------------|-----------|
| RING | DESCRIPTION | PAD LTR | CRIMP HEIGHT | WIRE SIZE | |
| 41601 | | A | .116 ±.002 | 12 | |
| 41602 | | B | .107 ±.002 | 14 | |
| 41603 | | C | NOT | USED | |
| 41604 | | D | NOT | USED | |
| | | CRIMP | SIZE | TYPE | RANGE |
| | | WIRE | .180 | F | 14-12 |
| | | INSUL | .300 | F | .170-.190 |
| | | FEED | APPL INST | SET UP GAGE | LAYOUT |
| | | 1.085 | 408-8039 | 458638-1 | L-1342 |
| TERM APPL SPEC 114-2084 | | WIRE STRIP LENGTH - | | | |

| LOC | DIST | REVISIONS | | | | |
|-----|------|-----------|---------------|--------|-----|------|
| | | P LTR | DESCRIPTION | DATE | DWN | APVD |
| A | 66 | H | ECR-08-010282 | 4-2008 | MY | GB |



- NOTES:
- 1** RECOMMENDED SPARE PARTS.
 - 2** GUARD MUST BE IN PLACE WHEN OPERATING APPLICATOR IN AMP-O-ELECTRIC MACHINE.
 - 3** LUBRICATE DAILY USING NO. 20 MACHINE OIL.
 - 4** GREASE LIGHTLY.



| QTY RQD | PART NO | DESCRIPTION | ITEM NO |
|------------|-----------|------------------------------------|---------|
| | | | 129 |
| | | | 128 |
| | | | 127 |
| | | | 126 |
| | | | 125 |
| | | | 124 |
| | | | 123 |
| | | | 122 |
| | | | 121 |
| | | | 120 |
| | | | 119 |
| | | | 118 |
| | | | 117 |
| | | | 116 |
| | | | 115 |
| | | | 114 |
| 4 | 21024-5 | WASHER,LOCK(NO.10)SHEAR PLATES | 113 |
| | | | 112 |
| | | | 111 |
| 6 | 21024-4 | WASHER,LOCK(NO.8)SHEAR BLADE | 110 |
| | | | 109 |
| 2 | 21018-4 | NUT,HEX MACH(4-40)DRAG | 108 |
| | | | 107 |
| | | | 106 |
| 2 | 21022-2 | NUT,HEX SELF-LOCK(8-32)DRAG STUD | 105 |
| | | | 104 |
| | | | 103 |
| 2 | 2-21006-6 | SCR,SKT SET OVAL PT(4-40x.75)DRAG | 102 |
| 1 | 21009-2 | SCR,SKT SET(1/4-20x.25 LOC-WEL)RAM | 101 |
| 2 | 21017-2 | SCR,DRIVE(#2x.19)IDENT PLATE | 100 |
| | | | 99 |
| 1 | 461264-1 | PLATE, IDENTIFICATION | 98 |
| | | | 97 |
| | | | 96 |
| 2 | 2-21002-2 | SCR,BHC(8-32x.50)STRIPPER | 95 |
| 4 | 2-21002-9 | SCR,BHC(10-32x.75)HSG CAP | 94 |
| 1 | 22733-8 | SCR,BHC(8-32x.38 LOC-WEL)ANVIL | 93 |
| | | | 92 |
| 3 | 2-22733-8 | SCR,BHC(1/4-20x.62)BASE PL | 91 |
| | | | 90 |
| | | | 89 |
| | | | 88 |
| 2 | 2-21000-8 | SCR,SKT CAP(8-32x.62)SHEAR BLADE | 87 |
| 4 | 2-21000-7 | SCR,SKT CAP(8-32x.50)STRIP GUIDE | 86 |
| | | | 85 |
| | | | 84 |
| | | | 83 |
| | | | 82 |
| | | | 81 |
| 2 | 3-21000-7 | SCR,SKT CAP(10-32x.75)SHEAR PLATE | 80 |
| REF | 455750-7 | GUARD ASSY | 79 |
| | | | 78 |
| | | | 77 |
| | | | 76 |
| | | | 75 |
| 2 | 690603-1 | SPRING, ASSIST | 74 |
| 2 | 23030-1 | SCR,SKT CAP(6-32x.25)CP DISC | 73 |
| | | | 72 |
| | | | 71 |
| -1 | PART NO | DESCRIPTION | ITEM NO |
| PARTS LIST | | | |

| QTY RQD | PART NO | DESCRIPTION | ITEM NO |
|------------|------------|------------------------------------|---------|
| | | | 70 |
| 1 | 692655-7 | AIR FEED VALVE ASSY | 69 |
| | | | 68 |
| | | | 67 |
| | | | 66 |
| | | | 65 |
| | | | 64 |
| | | | 63 |
| | | | 62 |
| 2 | 3-21000-9 | SCR,SKT CAP(10-32x1.00)AIR FD ASSY | 61 |
| 1 | 2-460277-6 | AIR FEED ASSY | 60 |
| 1 | 454220-1 | CAP, RAM | 59 |
| 1 | 453736-1 | HOUSING | 58 |
| | | | 57 |
| | | | 56 |
| | | | 55 |
| | | | 54 |
| 1 | 460680-7 | FEED FINGER ASSY | 53 |
| | | | 52 |
| | | | 51 |
| | | | 50 |
| 1 | 690686-2 | BOLT, CRIMPER(5/16-24x1.00) | 49 |
| | | | 48 |
| | | | 47 |
| | | | 46 |
| 1 | 690191-1 | PLUG, NYLON | 45 |
| 1 | 455674-1 | RAM | 44 |
| 1 | 690125-1 | WASHER, LAMINATED | 43 |
| 1 | 690124-1 | WASHER, RAM | 42 |
| | | | 41 |
| 2 | 23241-6 | BALL, STEEL | 40 |
| 2 | 690170-1 | SPRING, COMPRESSION | 39 |
| 1 | 690142-1 | DISC, INSULATION | 38 |
| 1 | 4-455829-6 | DISC, WIRE | 37 |
| 1 | 22480-5 | WASHER, SPRING | 36 |
| 1 | 690212-1 | POST, RAM | 35 |
| | | | 34 |
| | | | 33 |
| | | | 32 |
| | | | 31 |
| | | | 30 |
| | | | 29 |
| 1 | 1-690451-3 | SPACER, STRIPPER | 28 |
| 1 | 690455-3 | STRIPPER | 27 |
| 1 | 455676-1 | PLATE, BASE | 26 |
| 2 | 22354-8 | DRAG, STUD | 25 |
| 1 | 455678-1 | PLATE, STRIP GUIDE | 24 |
| | | | 23 |
| 2 | 4-22281-1 | SPRING, DRAG | 22 |
| | | | 21 |
| 1 | 454177-1 | DRAG, STOCK | 20 |
| 1 | 3-458030-3 | GUIDE, STRIP (REAR) | 19 |
| 1 | 3-458031-3 | GUIDE, STRIP (FRONT) | 18 |
| | | | 17 |
| | | | 16 |
| | | | 15 |
| | | | 14 |
| | | | 13 |
| | | | 12 |
| 1 | 240644-1 | PLATE, REAR SHEAR | 11 |
| 2 | 1-240645-1 | SPACER, SHEAR PLATE | 10 |
| 1 | 240642-1 | PLATE, FRONT SHEAR | 9 |
| 1 | 4-683452-7 | ANVIL | 8 |
| 1 | 2-240651-8 | BLADE, SLUG | 7 |
| 1 | 2-240641-0 | SPACER, SHEAR BLADE | 6 |
| 1 | 2-240641-4 | SPACER, SHEAR BLADE | 5 |
| 1 | 238009-2 | BLOCK, CRIMPER SPACER | 4 |
| 1 | 2-683453-5 | CRIMPER, INSULATION | 3 |
| 1 | 1-455888-5 | SPACER, CRIMPER | 2 |
| 1 | 456428-9 | CRIMPER, WIRE | 1 |
| -1 | PART NO | DESCRIPTION | ITEM NO |
| PARTS LIST | | | |

* Trademark of AMP Incorporated

THIS DRAWING IS A CONTROLLED DOCUMENT. 22APR2008

BY: M. YOUNGER
 CHK: T. MIDDLETON
 APVD: G. BAILEY
 NAME: MINIATURE QUICK CHANGE APPLICATOR END FEED (RING)

TYCO Electronics
 Tyco Electronics Corporation
 Harrisburg, PA 17105-3608

| | | | | | |
|--------------------|--|------------------|-----------|------------|---------------|
| DIMENSIONS: INCHES | TOLERANCES UNLESS OTHERWISE SPECIFIED: | SIZE | CAGE CODE | DRAWING NO | RESTRICTED TO |
| 0 PLC ± .005 | 1 PLC ± .002 | A1 | 00779 | 567335-1 | - |
| 2 PLC ± .002 | 3 PLC ± .002 | SCALE | 1:1 | SHEET | 1 OF 1 |
| 4 PLC ± .002 | ANGLES ± .005 | WEIGHT | - | REV | H |
| MATERIAL | FINISH | CUSTOMER DRAWING | | | |