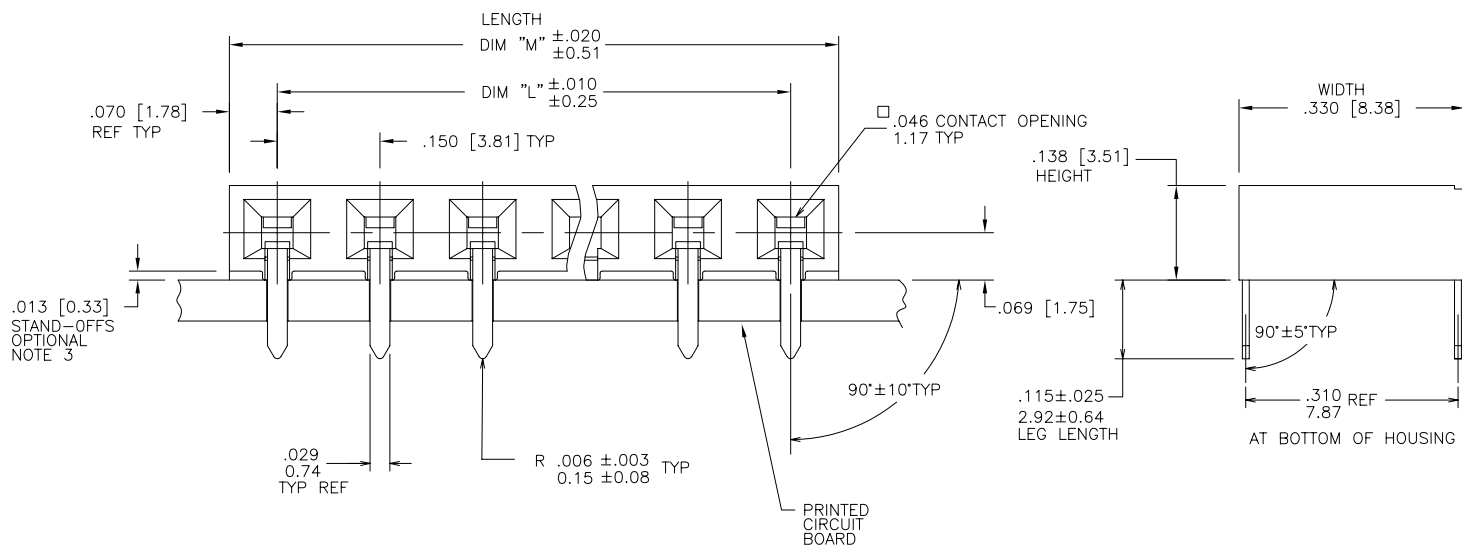
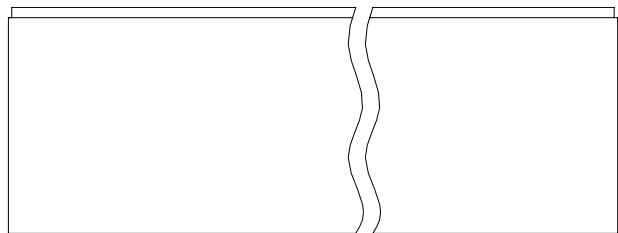


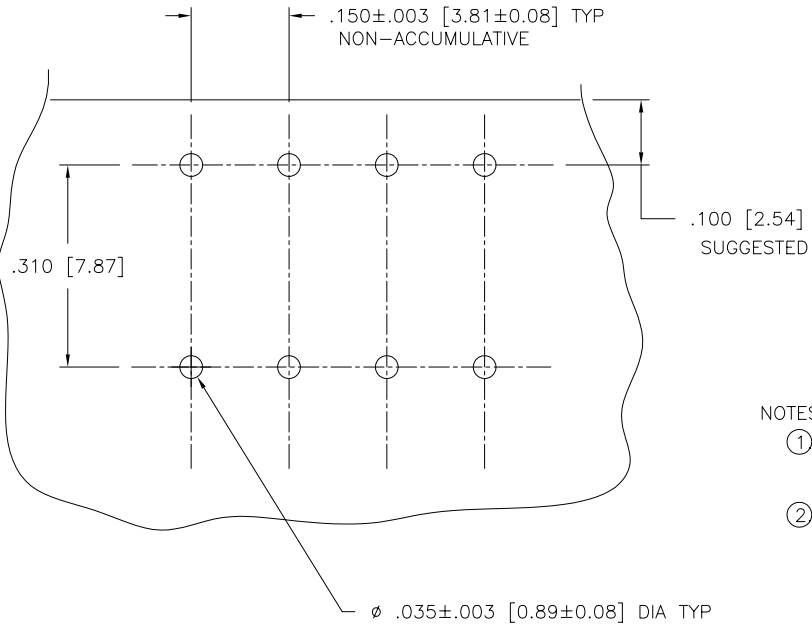
PRODUCT NUMBER  
SEE TABLE



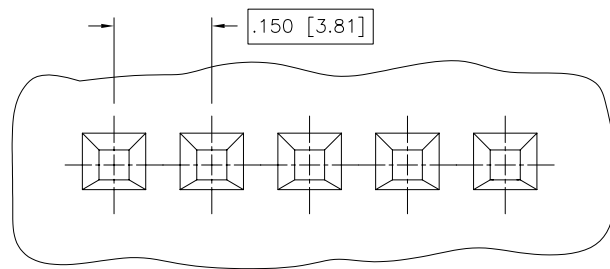
mat'l. code			surface ISO 1302 <input checked="" type="checkbox"/>		tolerance ISO 406 ISO 1101		projection		product family CARD CONN	
ltr	ecn no	dr	date		tolerances unless otherwise specified		INCH/MM		title	
X	REVISED	EBY	2/14/86		angles		.XX $\pm$ .01/.X $\pm$ .3		1X.150 HORIZ. CARD CONN.	
Y	V61618	MDF	10/31/96		linear		.XXX $\pm$ 0.005/.XX $\pm$ .13		HT NYLON	
AA	V70992	JM	10/12/97		0' $\pm 2'$		.XXXXX.0020/.XXX $\pm$ .051		scale 4:1	
AB	v02523	AZ	10/23/00		dr		M.CLOUSER 10/2/85		dwg no sheet 1 of 6 size	
AC	M05-0199	ERE	09/15/05		enr		H.SUNDY 10/31/96		65059 A3	
AD	M06-0210	MHT	6/03/06		chr		H.SUNDY 10/31/96		type Product Customer Drawing	
sheet index			revision		appd		H.SUNDY 10/31/96			
			AD	AD	AD	AD	AD	AD		
sheet			1	2	3	4	5	6		

form: A3

PRODUCT NUMBER  
SEE TABLE



RECOMMENDED MOUNTING HOLE PATTERN  
SCALE 4/1



MATING PIN PATTERN  
SCALE 4/1

-ALL MATING .025/0.64 SQ. PINS ON TRUE CENTER OF BASIC DIMENSIONS WITHIN .015/0.38 DIA.  
-SUGGESTED MATING PIN LENGTH .350 ± .020/8.89 ± 0.51.

NOTES:

- ① HOUSING MAT'L:  
FILLED HIGH TEMPERATURE NYLON  
COLOR: BLACK
- ② TERMINAL MATERIAL:  
BODY: BRASS, .010/0.250 THK  
SPRING: BE-CU, HEAT TREATED. SEE TABLE FOR THICKNESS  
PLATING:  
40u"/1.02u Au IN CONTACT AREA (STANDARD PLATING)  
(EXCEPTIONS NOTED IN TABLE)
- ③. ADD "LF" SUFFIX AT THE END OF PART NUMBER FOR LEAD FREE OPTION.
- ④. THESE PRODUCTS MEET EUROPEAN UNION DIRECTIVES AND OTHER COUNTRY REGULATIONS AS DESCRIBED IN GS-22-008.
5. THIS PART WILL WITHSTAND EXPOSURE TO 260°C PEAK TEMPERATURE FOR 20 SECONDS IN WAVE SOLDER, INFRA-RED OR VAPOR PHASE SOLDER PROCESS.
- ⑥. "THIS PRODUCT HAS 100% TIN PLATING IN THE INTERFACE AND HAS NOT BEEN TESTED FOR WHISKER GROWTH IN ALL INTERCONNECT ENVIRONMENTS."
- ⑦. MARKING FCI PART NUMBER & DATE CODE LEGIBLE ON TUBE LABEL.



FCIconnect.com

Copyright FCI

mat'l. code		surface ISO 1302 ✓		tolerance ISO 406 ISO 1101		projection INCH/MM		product family CARD CONN	
ltr		ecn no		dr		date		title	
AD								1X.150 HORIZ. CARD CONN. HT NYLON	
								scale 4:1	
								dwg no 65059	
								sheet 2 of 6 size A3	
								type Product Customer Drawing	
sheet index		revision sheet							

PRODUCT NO.	NO OF POS	DIM "L"	DIM "M"	HOUSING MATERIAL	SPRING THICKNESS	BODY PLATING THICKNESS	CUSTOMER RESTRICTED	LEAD FREE OPTION
65059-001	1 X 5	.600/15.24	.740/18.80	HT NYLON	.0035/0.089	40u"/1.02u Au		NOTE 3, 4
-002	1 X 6	.750/19.05	.890/22.61					
-003	1 X 7	.900/22.86	1.040/26.42					
-004	1 X 8	1.050/26.67	1.190/30.23					
-005	1 X 9	1.200/30.48	1.340/34.04					
-006	1 X 10	1.350/34.29	1.490/37.85					
-007	1 X 11	1.500/38.10	1.640/41.66					
-008	1 X 12	1.650/41.91	1.790/45.47					
-009	1 X 13	1.800/45.72	1.940/49.28					
-010	1 X 14	1.950/49.53	2.090/53.09					
-011	1 X 15	2.100/53.34	2.240/56.90					
-012	1 X 16	2.250/57.15	2.390/60.71					
-013	1 X 17	2.400/60.96	2.540/64.52					
-014	1 X 18	2.550/64.77	2.690/68.33					
-015	1 X 19	2.700/68.58	2.840/72.14					
-016	1 X 20	2.850/72.39	2.990/75.95					
-017	1 X 21	3.000/76.20	3.140/79.76					
-018	1 X 22	3.150/80.01	3.290/83.57					
-019	1 X 23	3.300/83.82	3.440/87.38					
-020	1 X 24	3.450/87.63	3.590/91.19					
-021	1 X 25	3.600/91.44	3.740/95.00					
-022	1 X 26	3.750/95.25	3.890/98.81					
-023	1 X 27	3.900/99.06	4.040/102.62					
-024	1 X 28	4.050/102.87	4.190/106.43					
65059-025	1 X 29	4.200/106.68	4.340/110.24	HT NYLON	.0035/0.089	40u"/1.02u Au		NOTE 3, 4



Copyright FCI

mat'l. code		surface ISO 1302 <input checked="" type="checkbox"/>		tolerance ISO 406 ISO 1101		projection 		product family CARD CONN	
ltr	ecn no	dr	date	tolerances unless otherwise specified					
AD				angles	linear	.XX±.01/.X±.3	INCH/MM		title
				0'±2'		.XXX±.0.005/.XX±.13	scale 4:1		1X.150 HORIZ. CARD CONN. HT NYLON
				dr	M.CLOUSER	10/2/85	FCI		dwg no
				enr	H.SUNDY	10/31/96			sheet 3 of 6 size
				chr	H.SUNDY	10/31/96			65059 A3
				appd	H.SUNDY	10/31/96			type Product Customer Drawing
sheet index	revision sheet								

PRODUCT NO.	NO OF POS	DIM "L"	DIM "M"	HOUSING MATERIAL	SPRING THICKNESS	BODY PLATING THICKNESS	CUSTOMER RESTRICTED	LEAD FREE OPTION
65059-026	1 X 30	4.350/110.49	4.490/114.05	HT NYLON	.0035/0.089	40u"/1.02u Au		NOTE 3, 4
-027	1 X 12	1.650/41.91	1.790/45.47				RESTRICTED	
-028	1 X 26	3.750/95.25	3.890/98.81				RESTRICTED	
-029	<del>1 X 1</del>	<del>.000/0.00</del>	<del>.140/3.56</del>					
-030	1 X 2	.150/3.81	.290/7.37					
-031	1 X 3	.300/7.62	.440/11.81					
-032	1 X 4	.450/11.43	.590/14.99			40u"/1.02u Au		
-033	1 X 8	1.050/26.67	1.190/30.23			100u"/2.54u TIN LEAD	RESTRICTED	
-034	1 X 30	4.350/110.49	4.490/114.05			100u"/2.54u TIN LEAD	RESTRICTED	
-035	1 X 16	2.250/57.15	2.390/60.71			40u"/1.02u Au	RESTRICTED	
-036	1 X 24	3.450/87.63	3.590/91.19			50u"/1.27u Au		
-037	1 X 28	4.050/102.87	4.190/106.43			50u"/1.27u Au		
-038	1 X 13	1.800/45.72	1.940/49.28			40u"/1.02u Au		
-039	1 X 15	2.100/53.34	2.240/56.90			40u"/1.02u Au		
-040	1 X 27	3.900/99.06	4.040/102.61			40u"/1.02u Au		
-041	1 X 18	2.550/64.77	2.690/68.33		.0035/0.089	100u"/2.54u Au	RESTRICTED	
-042	1 X 22	3.150/80.01	3.290/83.57		.0048/0.122	40u"/1.02u Au	RESTRICTED	
-043	1 X 5	.600/15.24	.740/18.80		.0035/0.089	40u"/1.02u Au	RESTRICTED	
65059-044	1 X 7	.900/22.86	1.040/26.42	HT NYLON	.0035/0.089	40u"/1.02u Au	RESTRICTED	NOTE 3, 4

—OBS.



Copyright FCI

mat'l. code		surface ISO 1302 <input checked="" type="checkbox"/>		tolerance ISO 406 ISO 1101		projection 		product family CARD CONN	
ltr		ecn no dr		date		tolerances unless otherwise specified		title	
AD						linear .XX±.01/.X±.3 .XXX±.0.005/.XX±.13 XXXX±.0020/XXX±.051		INCH/MM	
						0'±2'		scale 4:1	
		dr		M.CLOUSER		10/2/85		dwg no	
		enr		H.SUNDY		10/31/96		sheet 4 of 6 size	
		chr		H.SUNDY		10/31/96		65059 A3	
		appd		H.SUNDY		10/31/96		type Product Customer Drawing	
sheet index		revision sheet							

PRODUCT NO.	NO OF POS	DIM "L"	DIM "M"	HOUSING MATERIAL	SPRING THICKNESS	BODY PLATING THICKNESS	CUSTOMER RESTRICTED	LEAD FREE OPTION
65059-201	1 X 1	.000/0.00	.140/3.56	HT-NYLON	.0035/0.089	100u"/2.54u TIN LEAD		
-202	1 X 2	.150/3.81	.290/7.37	HT NYLON	.0035/0.089	100u"/2.54u TIN LEAD		NOTE 3, 4
-203	1 X 3	.300/7.62	.440/11.18					
-204	1 X 4	.450/11.43	.590/14.99					
-205	1 X 5	.600/15.24	.740/18.80					
-206	1 X 6	.750/19.05	.890/22.61					
-207	1 X 7	.900/22.86	1.040/26.42					
-208	1 X 8	1.050/26.67	1.190/30.23					
-209	1 X 9	1.200/30.48	1.340/34.04					
-210	1 X 10	1.350/34.29	1.490/37.85					
-211	1 X 11	1.500/38.10	1.640/41.66					
-212	1 X 12	1.650/41.91	1.790/45.47					
-213	1 X 13	1.800/45.72	1.940/49.28					
-214	1 X 14	1.950/49.53	2.090/53.09					
-215	1 X 15	2.100/53.34	2.240/56.90					
-216	1 X 16	2.250/57.15	2.390/60.71					
-217	1 X 17	2.400/60.96	2.540/64.52					
-218	1 X 18	2.550/64.77	2.690/68.33					
-219	1 X 19	2.700/68.58	2.840/72.14					
-220	1 X 20	2.850/72.39	2.990/75.95					
-221	1 X 21	3.000/76.20	3.140/79.76					
-222	1 X 22	3.150/80.01	3.290/83.57					
-223	1 X 23	3.300/83.82	3.440/87.38					
-224	1 X 24	3.450/87.63	3.590/91.19					
65059-225	1 X 25	3.600/91.44	3.740/95.00	HT NYLON	.0035/0.089	100u"/2.54u TIN LEAD		NOTE 3, 4

OBS.

NOTE 3, 4

NOTE 3, 4



FCJconnect.com

Copyright FCJ

mat'l. code		surface ISO 1302 <input checked="" type="checkbox"/>	tolerance ISO 406 ISO 1101	projection 	product family CARD CONN
ltr	ecn no	dr	date	tolerances unless otherwise specified	title
AD				angles linear .XX±.01/.X±.3 .XXX±.0.005/.XX±.13 .XXXX±.0020/.XXX±.051	1X.150 HORIZ. CARD CONN. HT NYLON
				0'±2"	scale 4:1
		dr	M.CLOUSER	10/2/85	dwg no
		enr	H.SUNDY	10/31/96	sheet 5 of 6 size
		chr	H.SUNDY	10/31/96	65059
		appd	H.SUNDY	10/31/96	A3
sheet index	revision sheet				type Product Customer Drawing



PRODUCT NO.	NO OF POS	DIM "L"	DIM "M"	HOUSING MATERIAL	SPRING THICKNESS	BODY PLATING THICKNESS	CUSTOMER RESTRICTED	LEAD FREE OPTION
65059-226	1 X 26	3.750/95.25	3.890/98.81	HT NYLON	.0035/0.089	100u"/2.54u TIN LEAD		NOTE 3, 4
-227	1 X 27	3.900/99.06	4.040/102.62					
-228	1 X 28	4.050/102.87	4.190/106.43					
-229	1 X 29	4.200/106.68	4.340/110.24					
-230	1 X 30	4.350/110.49	4.490/114.05		.0035/0.089			
65059-231	1 X 31	3.150/80.01	3.290/83.57	HT NYLON	.0048/0.122	100u"/2.54u TIN LEAD	RESTRICTED	NOTE 3, 4



Copyright FCI

mat'l. code		surface ISO 1302 <input checked="" type="checkbox"/>		tolerance ISO 406 ISO 1101		projection 		product family CARD CONN	
ltr	ecn	no	dr	date	tolerances unless otherwise specified				
AD					angles	linear	.XX±.01/.X±.3	INCH/MM	
					0°±2'		.XXX±.0.005/.XX±.13	1X.150 HORIZ. CARD CONN.	
							.XXXX±.0020/.XXX±.051	HT NYLON	
					dr	M.CLOUSER	10/2/85	scale 4:1	
					enr	H.SUNDY	10/31/96	dwg no sheet 6 of 6 size	
					chr	H.SUNDY	10/31/96	65059 A3	
					appd	H.SUNDY	10/31/96	type Product Customer Drawing	
sheet index	revision sheet								

