

6

5

4

3

2

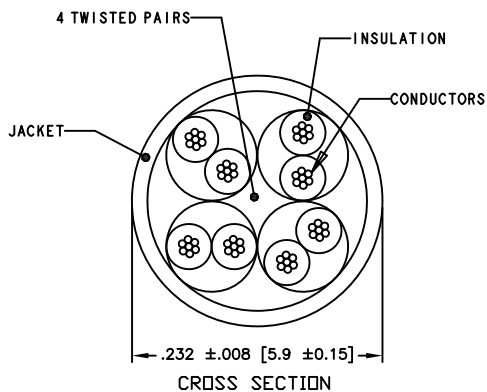
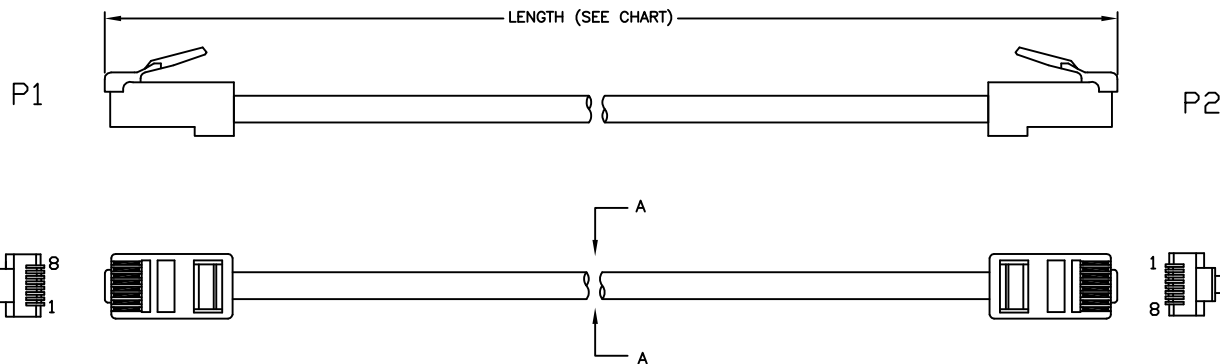
1

Rev	AWO #	Description	Date	Appr
-		RELEASED	3/25/15	

APPROVED: _____

DATE: _____ TITLE: _____

CUSTOM CABLE ASSEMBLIES ARE NON-CANCELLABLE/NON-RETURNABLE



PIN ASSIGNMENT (TIA 568A)

P1	P2
1	1 White/Green
2	2 Green
3	3 White/Orange
6	6 Orange
4	4 Blue
5	5 White/Blue
7	7 White/Brown
8	8 Brown

NPC-6-XXX-XX

LENGTH	CODE
12.0"±.39" [305±10]	001
24.0"±.79" [610±20]	002
36.0"±1.2" [915±20]	003
60.0"±1.5" [1,525±40]	005
84.0"±1.9" [2,135±50]	007
120.0"±2.4" [3,050±50]	010
168.0"±2.4" [4,270±60]	014
300.0"±2.4" [7,625±60]	025
600.0"±2.7" [15,250±70]	050
1,200.0"±2.7" [30,500±70]	100

COLOR	CODE
BLUE	BU
ORANGE	OR
WHITE	WT
BLACK	BK
RED	RD
GREEN	GR
GRAY	GY
PURPLE	PU

SPECIFICATIONS:

Plugs:
P1 & P2: RJ45, 8P8C, CAT 6 Plug, Long Body, Polycarbonate, Rated UL94V-0, Gold plated
Cable:
Cat 6, UTP 24 AWG X 4P, Stranded bare Copper, 550MHz
O.D.: 5.9mm ±0.15mm, UL & ETL verified, conforms to ANSI/TIA-568-C.2
Jacket color (See Chart)
Electrical:
Hi-Pot: 300V DC / 10ms
100% tested for Open, shorts and crossed wires
Environmental:
Lead free, RoHS compliant.



UNLESS OTHERWISE SPECIFIED ALL DIMENSIONS ARE INCHES [MM] TOLERANCES: EXCEPT AS NOTED		
.X ±.10	∅X ±.10	
.XX ±.020	∅XX ±.015	
.XXX ±.015	∅XXX ±.010	
APPROVALS		DATE
DRAWN	SS	3/25/15
CHECKED		
APPROVED		

ADAM TECH

909 Rahway Avenue, Union, NJ 07083
Phone: 908-687-5000 Fax: 908-687-5710

TITLE
RJ45 NETWORK PATCH CABLE, CAT 6,
550MHz, UTP, STRANDED

SIZE X	PART NO. NPC-6-XXX-XX	REV. -
REF:	SCALE: NTS	SHEET 1 OF 1

6

5

4

3

2

1