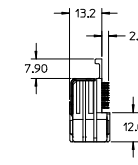
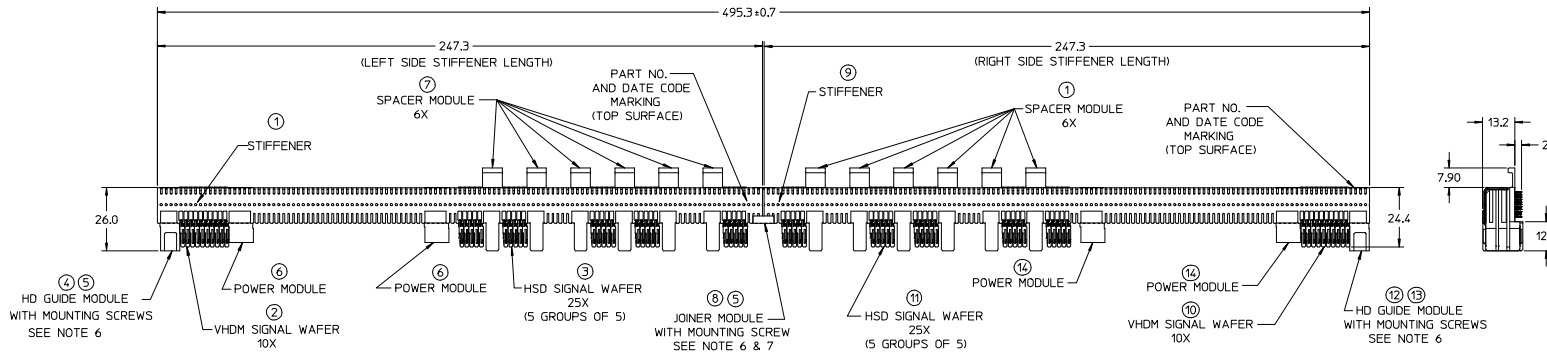


CUSTOMER: EMC
(SYMM 7-702)

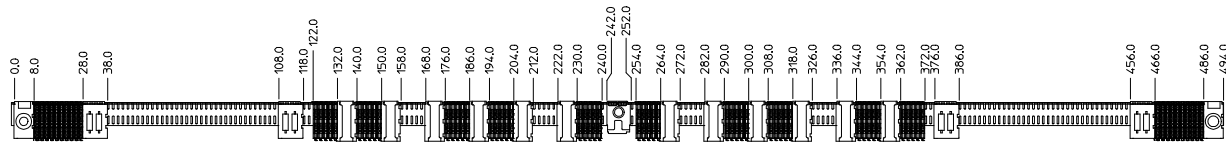
NOTES: (UNLESS OTHERWISE SPECIFIED)

- MATERIALS: HOUSING - LIQUID CRYSTAL POLYMER (LOP) GLASS-FILLED, UL94V-0, BLACK
TERMINALS - HIGH PERFORMANCE COPPER ALLOY
STIFFENER - STAINLESS STEEL
- FINISH: SELECTIVE GOLD (Au) IN CONTACT AREA, 0.76 MICROMETERS MINIMUM THICKNESS, SELECTIVE MATTE TIN (Sn) ON PCB TAILS, NICKEL (Ni) UNDERPLATE OVERALL.
- REFER TO MOLEX PRODUCT SPECIFICATION PS-74031-999 FOR PERFORMANCE SPECIFICATIONS.
- REFER TO MOLEX DOCUMENT SD-74031-002 FOR ADDITIONAL DETAIL ON THE VHDM 6 ROW SIGNAL WAFER.
- REFER TO MOLEX DOCUMENT SD-74881-002 FOR ADDITIONAL DETAIL ON THE HSD 6 ROW SIGNAL WAFER.
- MOUNTING SCREWS AND JOINER MODULE WILL BE BAGGED WITH EACH CONNECTOR.
- END USER TO INSERT JOINER MODULE ON STIFFENER AFTER INSTALLATION OF BOTH SUB-ASSEMBLIES ON DAUGHTERCARD.
- REFER TO MOLEX DOCUMENT SD-74039-023 FOR ADDITIONAL DETAIL ON THE JOINER MODULE.
- REFER TO MOLEX DOCUMENT SD-74026-010 FOR ADDITIONAL DETAIL ON THE POWER MODULE.
- PARTS ARE PACKAGED PER PK-70873-546
- THIS PART CONFORMS TO CLASS "B" REQUIREMENT OF MOLEX COSMETIC SPECIFICATION PS-45499-002.



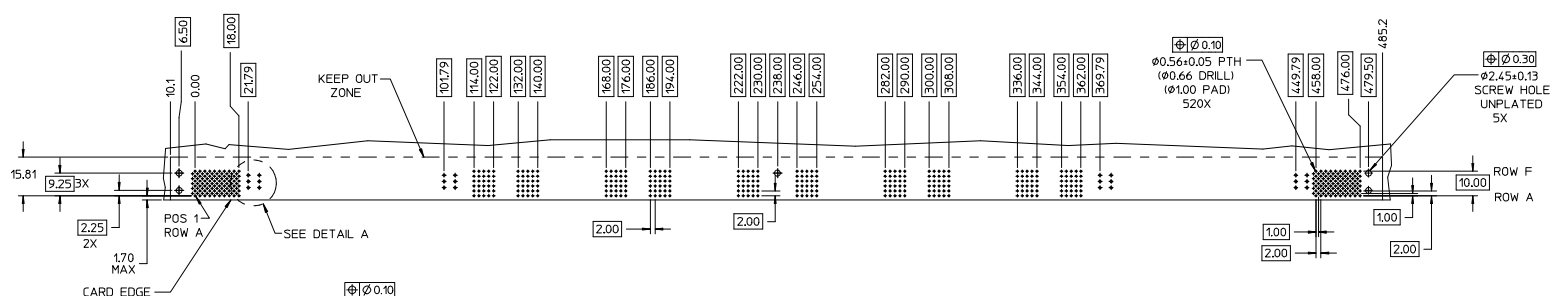
LEFT SIDE OF TWO PIECE CONNECTOR

ITEM	PART NUMBER	DESCRIPTION	QTY
1	74036-0247	STIFFENER	1
2	74031-1001	VHDM SIGNAL WAFER, LF	10
3	74881-1001	HSD SIGNAL WAFER, LF	25
4	74039-2108	MTL GUIDE - BLUE - SM DIA	1
5	73774-0010	*2-56 X 0.188 MNTG SCREW	3
6	75885-2010	POWER MODULE FOR EMC, LF	2
7	74887-0006	OUTRIGGER SPACER MODULE	6
8	74039-6111	JOINER - SM DIA	1



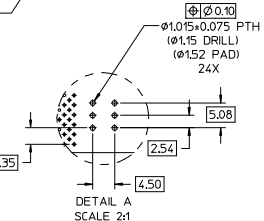
RIGHT SIDE OF TWO PIECE CONNECTOR

ITEM	PART NUMBER	DESCRIPTION	QTY
9	74036-0247	STIFFENER	1
10	74031-1001	VHDM SIGNAL WAFER, LF	10
11	74881-1001	HSD SIGNAL WAFER, LF	25
12	74039-2008	MTL GUIDE - BLACK - LG DIA	1
13	73774-0010	*2-56 X 0.188 MNTG SCREW	2
14	75885-2010	POWER MODULE FOR EMC, LF	2
15	74887-0006	OUTRIGGER SPACER MODULE	6



DAUGHTERCARD HOLE PATTERN
(CONNECTOR SIDE)

LEAD-FREE
PLATING



CHG TO LEAD-FREE EC NO: UCP2012-2063 DRAWN BY: CHYK-MOLFE 2012/06/20 CHECKED BY: APPR:SMILLER 2012/08/10 REV DESCRIPTION	QUALITY SYMBOLS	GENERAL TOLERANCES (UNLESS SPECIFIED)	DIMENSION STYLE	SCALE	DESIGN UNITS	THIRD ANGLE PROJECTION
	▽=0	4 PLACES ± ---	MM ONLY	1:1	METRIC	⊕
	▽=0	3 PLACES ± 0.25	INCH			
	▽=0	2 PLACES ± 0.38				
		0 PLACE ± ---				
		ANGULAR ±1/2°				
		DRAFT WHERE APPLICABLE MUST REMAIN WITHIN DIMENSIONS				
			MATERIAL NO.	DOCUMENT NO.		
			74886-0020	SD-74886-020		
						SHEET NO.
						1 OF 1