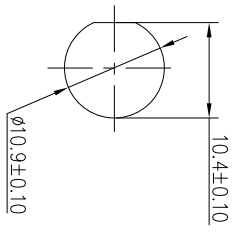
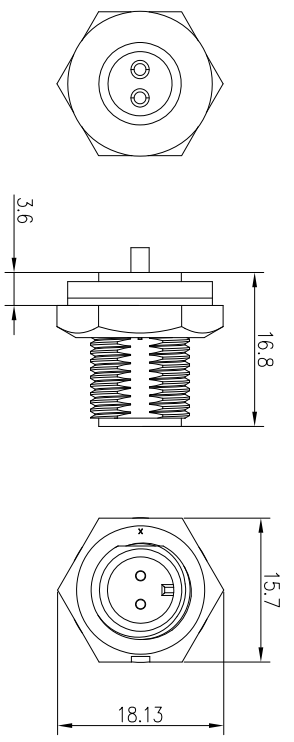


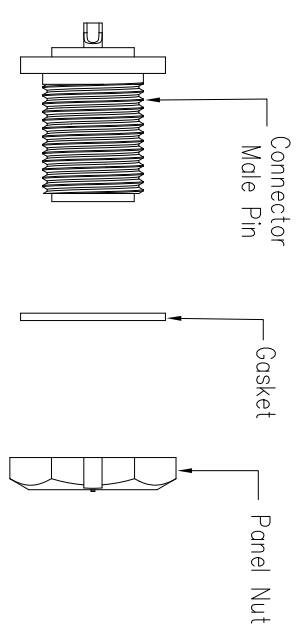
REV.	ECN NO.	DESCRIPTION	SIGN	DATE
C1	N/A	INITIAL DRAWING	Victory	2019/08/20



Recommended Panel Cut-out



Panel T: Max 4.0

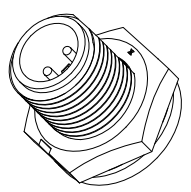


21XXXX515-01

Pin Number

	2 Pin		3 Pin		4 Pin
P/N: 21002515-01		P/N: 21003515-01		P/N: 21004515-01	

Pin Assignments Front View



- Specification:
1. Operation Temperature: -45°C~105°C.
 2. Insulation Resistance: 100M Ωat DC 500V.
 3. Contact Resistance: <10m Ω.
 4. Withstand Voltage: 1500V AC.
 5. Operating Current: 5A.
 6. Operating Voltage: AC 110V.
 7. Waterproof Rate: IP67(Mated).
 8. Connector: Nylon+GF, Black.
 9. Panel Nut: Nylon, Black.
 10. Gasket: Silicon, Gray.
 11. Male Pin: Copper Alloy, Gold Plated.
 12. Torque Rate: 0.5~0.7N • m.
 13. RoHS Compliant.
 14. UL Compliant.
 15. Mating Cap P/N: 806-00028-00

UNIT: mm		DESCRIPTION	Mini Series Screw Type Front Mount With Male Pin
TOLERANCE		SCALE	4:5
.X	±0.25	REV	C1
.XX	±0.15	SIZE	A4
.XXX	±0.05	SHEET	1 OF 1
ANGLES	±1°	* : Inspection Item	

PART NO	21XXXX515-01	DRAWN BY	Victory	DATE	2019/08/20
---------	--------------	----------	---------	------	------------

DWG NO		CHECKED BY	Ivon	DATE	2019/08/20
--------	--	------------	------	------	------------

CUSTOMER		APPROVED BY	Ponson	DATE	2019/08/20
----------	--	-------------	--------	------	------------

