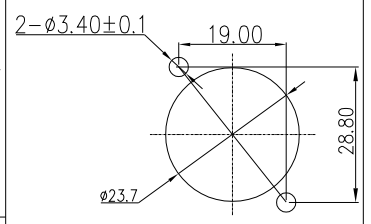
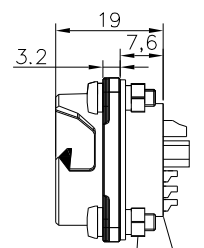
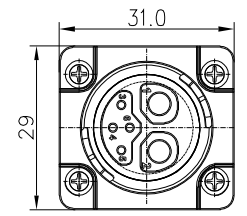


REV.	ECN NO.	DESCRIPTION	SIGN	DATE
C1	N/A	INITIAL DRAWING	Liu	2020/05/20

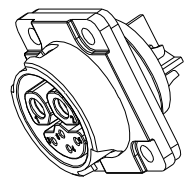
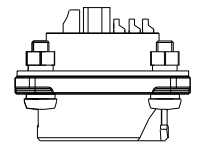


RECOMMENDED PANEL Cut-Out



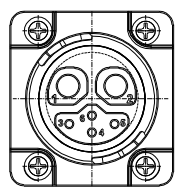
Screw
Washer
Nut
Gasket

Connector
Female Pin



- Specification:
- 1.Operation Temperature: -45℃~105℃.
 - 2.Insulation Resistance:100MΩ at DC500V.
 - 3.Contact Resistance:<10mΩ.
 - 4.Withstand Voltage: 1500V AC, 1min
 - 5.Operating Current:50A+5A
 - 6.Operating Voltage:AC 300V
 - 7.Waterproof Rate:IP67 (Mated)
 - 8.Housing:Nylon, Black
 - 9.Female Pin:Copper Alloy, Gold Plated
 - 10.Gasket:Silicon Black
 - 11.Screw: Stainless Steel
 - 12.Washe: Stainless Steel
 - 13.Nut: Stainless Steel
 - 14.RoHS Compliant.
 - 15.Mating Cap P/N:806-00058-00

22XXX636-01
Pin Number



2+4 Pin
P/N: 24204636-01
Pin Assignments
Front View

UNIT:mm	DESCRIPTION Large Series Push Lock Female socket With Female Pin	
TOLERANCE .X ±0.25 .XX ±0.15 .XXX ±0.05 ANGLES ±1°	SCALE 1:1	SHEET 1 OF 1
REV. C1	SIZE A4	* :Inspection Item

CHOGORI®

PART NO 24204636-01	DRAWN BY Liu	DATE 2020/05/20
DWG NO	CHECKED BY Mo	DATE 2020/05/20
CUSTOMER	APPROVED BY Adley	DATE 2020/05/20

THIS INFORMATION IS CONFIDENTIAL AND IS DISCLOSED TO YOU ON CONDITION THAT NO FURTHER DISCLOSURE IS MADE BY YOU TO OTHER THAN CHOGORI PERSONNEL WITHOUT AUTHORIZATION FROM CHOGORI CORP.