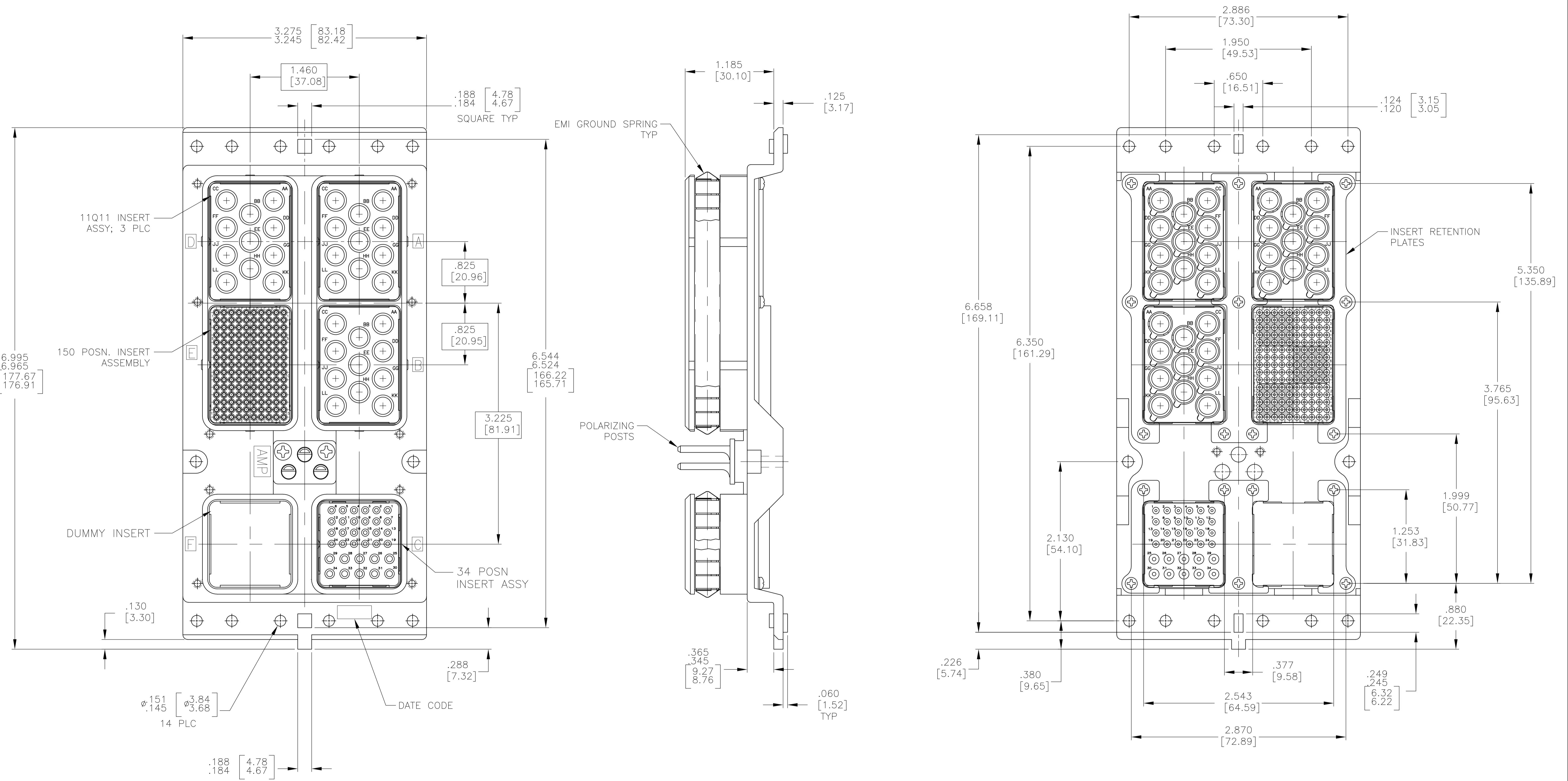


LOC		DIST		REVISIONS			
P	LTR	DESCRIPTION	DATE	DMN	APVD		
C		REVISED PER ECO-15-011840	17NOV15	RS	CT		



- CONNECTOR DIMENSIONS ARE PER ARINC 600 SPECIFICATION
- DUST COVER (NOT SHOWN) INSTALLED FOR SHIPPING. (2 PLC)
- KEYING SHOWN IN POSITION "01" FOR REFERENCE ONLY. SEE TABLE FOR KEYING POSITION. FOR POSITION "00" KEYING SHIPPED UNASSEMBLED.
- THE FOLLOWING CONTACTS ARE INCLUDED BUT NOT INSTALLED:
 SIZE 22 CRIMP PIN CONTACT; TE PART NO. 208262-3; QTY = 150
 SIZE 20 CRIMP SOCKET CONTACT; TE PART NO. 208267-2; QTY = 24
 SIZE 16 CRIMP SOCKET CONTACT; TE PART NO. 208270-2; QTY = 10
 QUADRAX SOCKET CONTACT; TE PART NO. 1445693-1; QTY = 33

COMPONENT	MATERIAL	FINISH
SHELL	DIE CAST ALUMINUM PER ASTM-B-85	ELECTROLESS NICKEL PER MIL-C-26074.
RETENTION PLATES	ALUMINUM ALLOY PER ASTM-B-209	ELECTROLESS NICKEL PER MIL-C-26074.
SCREWS AND LOCKWASHERS	STEEL OR STAINLESS STEEL	CHROMATE OVER ZINC OR PASSIVATED
POLARIZING POSTS	ZINC ALLOY PER ASTM-B-86	ELECTROLESS NICKEL PER MIL-C-26074.
POLARIZING POST RETAINING PLATE	ALUMINUM ALLOY PER ASTM-B-209	BLUE ANODIZED PER MIL-A-8625
150 & 34 INSERTS	THERMOSET	-
11Q11 & DUMMY INSERTS	ALUMINUM ALLOY PER ASTM-B-209	ELECTROLESS NICKEL PER MIL-C-26074.

OBSELETE	"01"	2157337-1
	KEYING POSITION	PART NUMBER

THIS DRAWING IS A CONTROLLED DOCUMENT.

DIMENSIONS: INCHES
 TOLERANCES UNLESS OTHERWISE SPECIFIED:
 0 PLC ± -
 1 PLC ± -
 2 PLC ± -
 3 PLC ± .005 [0.13]
 4 PLC ± -
 ANGLES ± -

MATERIAL: SEE TABLE
 FINISH: SEE TABLE

THIS DRAWING IS A CONTROLLED DOCUMENT.
 DWG: C.C.THOMAS 6-9-11
 CHK: W.BERHMART 6-9-11
 APVD: W.BERHMART 6-9-11
 NAME: PLUG ASSY, SIZE 3, ARINC 600 (11Q11/11Q11/34/11Q11/150/DUMMY)
 APPLICATION SPEC: -
 WEIGHT: -
 CUSTOMER DRAWING: -

SIZE: A1
 CASE CODE: 00779
 DRAWING NO: 2157337
 SCALE: 3:2
 SHEET: 1 OF 1
 REV: C

DIN: C.C.THOMAS 6-9-11
 CHK: W.BERHMART 6-9-11
 APVD: W.BERHMART 6-9-11
 NAME: PLUG ASSY, SIZE 3, ARINC 600 (11Q11/11Q11/34/11Q11/150/DUMMY)
 APPLICATION SPEC: -
 WEIGHT: -
 CUSTOMER DRAWING: -