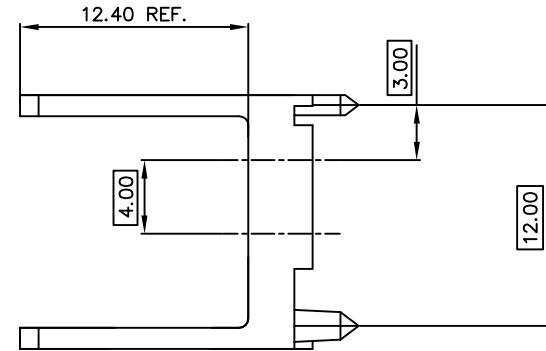
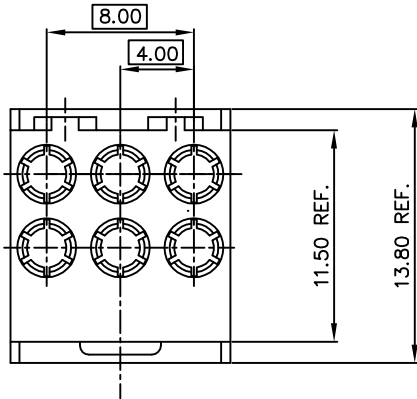
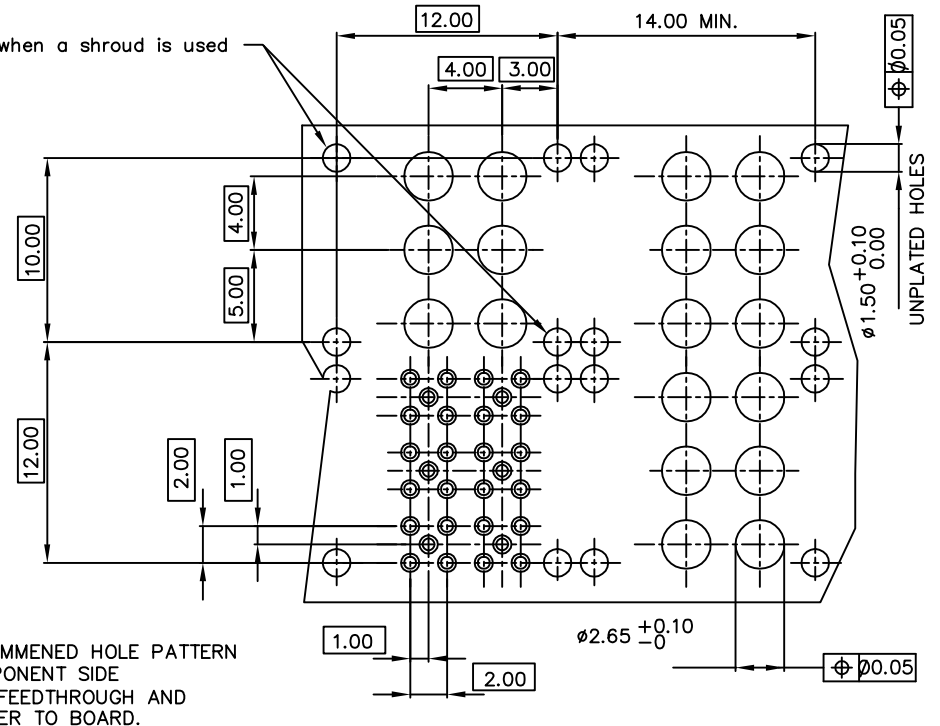


PRODUCT NO. 70243-101LF
70243-111LF



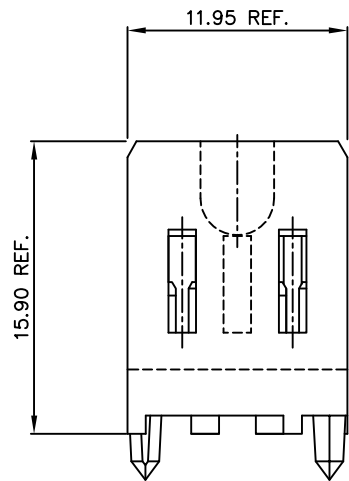
These hole are required when a shroud is used



NOTE:
1) MATERIAL:
LIQUID CRYSTAL POLYMER
30% GLASS.
FLAME RETARDANT ACC. UL 94-V0
COLOR NATURAL.

2) WHEN USING THIS PRODUCT IN A STRAIGHT TO BOARD APPLICATION THE FOLLOWING MUST BE TAKEN INTO ACCOUNT.
-101LF HOUSING IS TO BE USED FOR THE SOLDER TO BOARD INSERT 88980-00Z.
-111LF HOUSING IS TO BE USED FOR THE PRESS-FIT TO BOARD INSERT 88978-001.

3) THIS PRODUCT WITH "LF" SUFFIX MEETS EUROPEAN UNION DIRECTIVES AND OTHER COUNTRY REGULATIONS AS DESCRIBED IN GS -22-008.
4) THE HOUSING WILL WITHSTAND EXPOSURE TO 260 DEGREE PEAK TEMPERATURE FOR 10 SECONDS IN A WAVE SOLDER APPLICATION WITH A 1.6mm MINIMUM THICK CIRCUIT BOARD.



mat'l. code				tolerances unless otherwise specified				CUSTOMER COPY		fci ELECTRONICS	
SEE NOTE 1.										www.fciconnect.com	
ltr	ecm no	dr	date	linear	angles	mm	size	projection	title	product family	code
A	H10290	DAN	910912						MINI COAX	ETRAL(tm)	213
B	H10402	DAN	911229						S.T. MALE CONNECTOR		sheet 1 of 1
C	H20755	DAN	921124								
D	H40801	RVI	941208	dr	D Andrews	910912					
E	H90489	HME	990816	leng	D Andrews	941208					
F	p005-0357	CLU	050927	chr	A v Zanten	910912	scale	5:1			
				app	H v Woensel	910912					
sheet	revision	F									
index	sheet	1									

PDM: Rev.F STATUS: Released

Printed: May 19, 2011

© FCI Inc. All rights reserved. Reproduction or use in other products is not permitted without written authority from the publisher. Property of FCI Inc. / Tous droits réservés. Toute réimpression ou utilisation dans d'autres produits sans la permission écrite de la FCI Inc. est formellement interdite. Propriété de FCI Inc.