

■GENERAL DESCRIPTION

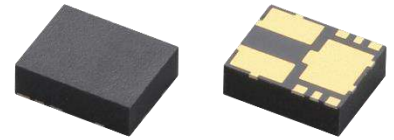
The MYRGM-W/MYRGM-B series is a synchronous step-down mini DC/DC converter which integrates an inductor and a control IC in one tiny package (2.5mm × 3.2mm, h=1.0mm).

An internal coil simplifies the circuit and enables minimization of noise and other operational trouble due to the circuit wiring. A wide operating voltage range of 2.7V to 5.5V enables Support for applications that require an internally fixed output voltage (0.8V to 3.6V).

The MYRGM-W/MYRGM-B series use synchronous rectification at an operating frequency of 3.0MHz. The MYRGM-W/MYRGM-B series use High Speed Transient Response-COT.

PWM control (MYRGM-W) or automatic PWM/PFM switching control (MYRGM-B) can be selected.

The series have a high speed soft-start as fast as 0.3ms in typical for quick turn-on. With the built-in UVLO (Under Voltage Lock Out) function, the internal P-channel driver transistor is forced OFF when input voltage becomes 2.0V or lower. When CE=Low, the integrated C_L discharge function which enables the electric charge at the output capacitor C_L to be discharged via the internal discharge switch located between the L_x and V_{SS} pins. The power consumption will be less than 1.0μA.



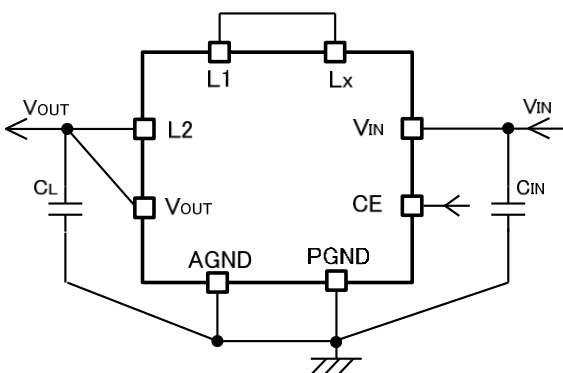
■APPLICATIONS

- Note Book PC
- Tablet PC
- SSD
- Mobile phone
- Projector
- Printer

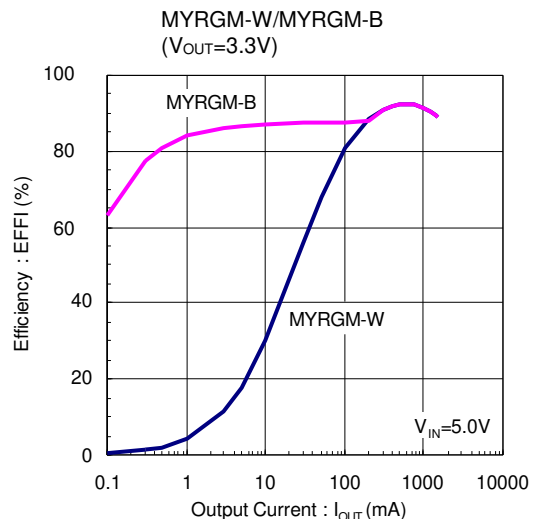
■FEATURES

Input Voltage	: 2.7V~5.5V
Output Voltage	: 0.8V~3.6V
Oscillation Frequency	: 3.0MHz
Output Current	: 1.5A
Efficiency	: 92% (V _{IN} =5.0V, V _{OUT} =3.3V/500mA)
Control Methods	: High Speed Transient Response-COT 100% Duty Cycle PWM (MYRGM-W) PWM/PFM (MYRGM-B)
Circuit Protection	: Thermal Shut Down Current Limit Circuit (Drop) Short Circuit Protection (Latch)
Functions	: Soft-start Circuit Built-in UVLO C _L Discharge
Output Capacitor	: Low ESR Ceramic Capacitor
Operating Ambient Temperature	: -40°C~+105°C
Environmentally Friendly	: EU RoHS Compliant, Pb Free Halogen Free

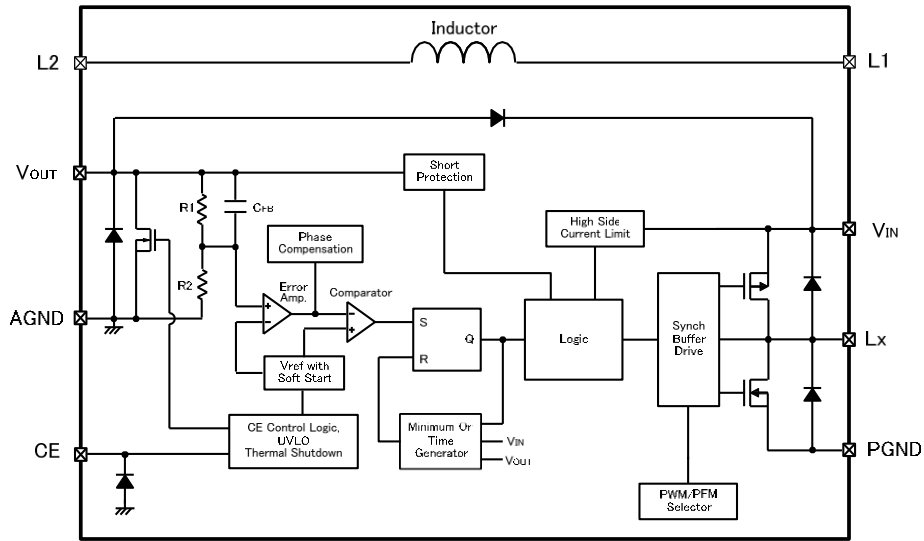
■TYPICAL APPLICATION CIRCUIT



■TYPICAL PERFORMANCE CHARACTERISTICS



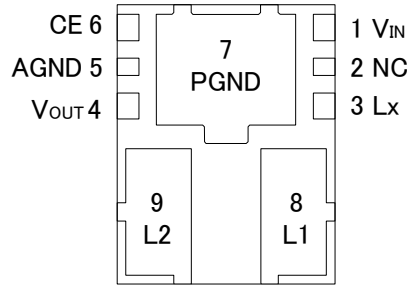
■ BLOCK DIAGRAM



* The MYRGM-W offers a fixed PWM control, a Control Logic of PWM/PFM Selector is fixed at “PWM” internally.
The MYRGM-B control scheme is a fixed PWM/PFM automatic switching, a Control Logic of PWM/PFM Selector is fixed at “PWM/PFM automatic switching” internally.

Diodes inside the circuit are an ESD protection diode and a parasitic diode.

■ PIN CONFIGURATION



BOTTOM VIEW

■ PIN ASSIGNMENT

PIN NUMBER	PIN NAME	FUNCTIONS
1	V_{IN}	Power Input
2	NC	No Connection
3	L_x	Switching Output
4	V_{OUT}	Fixed Output Voltage PIN
5	AGND	Analog Ground
6	CE	Chip Enable
7	PGND	Power Ground
8	L1	Inductor Electrodes
9	L2	Inductor Electrodes

* This 2-pin NC terminal is not connected to an IC chip.

■ FUNCTION TABLE

CE PIN Function

PIN NAME	SIGNAL	STATUS
1	Low	Stand-by
2	High	Active

* Please do not leave the CE pin open.

■ ABSOLUTE MAXIMUM RATINGS

$T_a=25^\circ\text{C}$

PARAMETER	SYMBOL	RATINGS	UNITS
V_{IN} Pin Voltage	V_{IN}	-0.3 ~ +6.2	V
L_x Pin Voltage	V_{Lx}	-0.3 ~ $V_{IN} + 0.3$ or +6.2 ⁽¹⁾	V
V_{OUT} Pin Voltage	V_{out}	-0.3 ~ $V_{IN} + 0.3$ or +4.0 ⁽²⁾	V
CE Pin Voltage	V_{CE}	-0.3 ~ +6.2	V
Power Dissipation	P_d	1200	mW
Operating Ambient Temperature	T_{opr}	-40 ~ +105	$^\circ\text{C}$
Storage Temperature	T_{stg}	-55 ~ +125	$^\circ\text{C}$

All voltages are described based on the GND (AGND and PGND) pin.

⁽¹⁾ The maximum value should be either $V_{IN} + 0.3$ or +6.2 in the lowest voltage

⁽²⁾ The maximum value should be either $V_{IN} + 0.3$ or +4.0 in the lowest voltage

■ ELECTRICAL CHARACTERISTICS

● MYRGMxxxxxW31RA/MYRGMxxxxxB31RA

Ta=25°C

PARAMETER	SYMBOL	CONDITIONS	MIN.	TYP.	MAX.	UNITS	CIRCUIT
Output Voltage	V_{OUT}	When connected to external componets, $I_{OUT}=30mA$	<E-1>	<E-2>	<E-3>	V	①
Operating Voltage Range	V_{IN}		2.7	-	5.5	V	①
Maximum Output Current	I_{OUTMAX}	When connected to external components, $V_{IN}=<C-1>$	1500	-	-	mA	①
UVLO Voltage ⁽²⁾	V_{UVLO}	$V_{OUT}=0.6V$, Voltage which Lx pin holding "L" level ^(*6)	1.35	2	2.68	V	③
Quiescent Current (MYRGM-B)	I_q	$V_{OUT}=V_{OUT(E)} \times 1.1V$	-	25	40	μA	②
Quiescent Current (MYRGM-W)	I_q	$V_{OUT}=V_{OUT(E)} \times 1.1V$	-	400	825	μA	②
Stand-by Current	I_{STB}	$V_{CE}=0V$	-	0	1	μA	②
Minimum ON time ⁽²⁾	t_{ONmin}	When connected to external components, $V_{IN}=V_{CE}<C-1>$, $I_{OUT}=1mA$	<E-5>	<E-6>	<E-7>	ns	①
Thermal Shutdown	T_{TSD}		-	150	-	°C	①
Thermal shutdown Hysteresis	T_{HYS}		-	30	-	°C	①
LxSW "H" ON Resistance	R_{LXH}	$V_{OUT}=0.6V$, $I_{LX}=100mA$ ⁽³⁾	-	0.14	0.28	Ω	④
LxSW "L" ON Resistance ⁽⁴⁾	R_{LXL}	$V_{OUT}=V_{OUT(T)} \times 1.1V$, $I_{LX}=100mA$ ⁽³⁾	-	0.1	0.2	Ω	④
LxSW "H" Leakage Current	I_{LeakH}	$V_{IN}=5.5V$, $V_{CE}=0V$, $V_{OUT}=0V$, $V_{LX}=5.5V$	-	0	30	μA	⑤
LxSW "L" Leakage Current	I_{LeakL}	$V_{IN}=5.5V$, $V_{CE}=0V$, $V_{OUT}=0V$, $V_{LX}=0V$	-	0	1	μA	⑤
Current Limit ⁽⁵⁾	I_{LIMH}	$V_{OUT}=0.6V$, I_{LX} until Lx pin oscillates	2.5	3	4.5	A	⑥
Output Voltage Temperature Characteristics	$\Delta V_{OUT}/(V_{OUT} \cdot \Delta T_{opr})$	$I_{OUT}=30mA$ $-40^\circ C \leq T_{opr} \leq 105^\circ C$	-	± 100	-	ppm/°C	①
CE"H" Voltage	V_{CEH}	$V_{OUT}=0.6V$, Applied voltage to V_{CE} , Voltage changes Lx to "H" level ⁽⁶⁾	1.4	-	V_{IN}	V	③
CE"L" Voltage	V_{CEL}	$V_{OUT}=0.6V$, Applied voltage to V_{CE} , Voltage changes Lx to "L" level ⁽⁶⁾	AGND	-	0.3	V	③
CE"H" Current	I_{CEH}	$V_{IN}=5.5V$, $V_{CE}=5.5V$, $V_{OUT}=0V$	-0.1	-	0.1	μA	⑤
CE"L" Current	I_{CEL}	$V_{IN}=5.5V$, $V_{CE}=0V$, $V_{OUT}=0V$	-0.1	-	0.1	μA	⑤
Soft-start Time	t_{SS}	$V_{CE}=0V \rightarrow 5.0V$, $V_{OUT}=V_{OUT(T)}V \times 0.9$ After "H" is fed to CE, the time by when clocks are generated at Lx pin.	0.1	0.3	0.5	ms	③
Short Protection Threshold Voltage	V_{SHORT}	Sweeping V_{OUT} , V_{OUT} voltage which Lx becomes "L" level ^(*6)	0.17	0.27	0.37	V	③
C_L Discharge	R_{DCHG}	$V_{CE}=0V$, $V_{OUT}=4.0V$	50	210	300	Ω	⑦
Inductance	L	Test Freq.=1MHz	-	0.5	-	μH	-
Inductor Rated Current	I_{DC}	$\Delta T=+40deg$	-	1.8	-	A	-

Unless otherwise stated, $V_{IN}=5.0V$, $V_{CE}=5.0V$, $V_{OUT(T)}$ =Nominal Voltage

NOTE:

⁽¹⁾ When the difference between the input and the output is small, 100% duty might come up and internal control circuits keep P-ch driver turning on even though the output current is not so large.

If current is further pulled from this state, output voltage will decrease because of P-ch driver ON resistance.

⁽²⁾ Including UVLO detect voltage, hysteresis operating voltage range for UVLO release voltage.

⁽³⁾ $R_{LXH}=(V_{IN}-Lx \text{ pin measurement voltage}) / 100mA$, $R_{LXL}=Lx \text{ pin measurement voltage} / 100mA$

⁽⁴⁾ Design value for the MYRGM-B series

⁽⁵⁾ Current limit denotes the level of detection at peak of coil current.

⁽⁶⁾ "H"= $V_{IN} - V_{IN} - 1.2V$, "L"= $-0.1V \sim +0.1V$

ELECTRICAL CHARACTERISTICS

● SPEC Table (V_{OUT}, t_{ONmin})

MYRGM-W; PWM Control

Part Number	NOMINAL OUTPUT VOLTAGE	V _{OUT}			V _{IN}	t _{ONmin} f _{osc} =3.0MHz			Part Number	NOMINAL OUTPUT VOLTAGE	V _{OUT}			V _{IN}	t _{ONmin} f _{osc} =3.0MHz				
		<E-1>	<E-2>	<E-3>		<C-1>	<E-5>	<E-6>			<E-7>	<E-1>	<E-2>		<E-3>	<C-1>	<E-5>	<E-6>	<E-7>
		V _{OUT(T)}	MIN.	TYP.		MAX.	MIN.	TYP.			MAX.	V _{OUT(T)}	MIN.		TYP.	MAX.	MIN.	TYP.	MAX.
MYRGM 080150W31RA	0.80	0.784	0.800	0.816	2.70	71	119	166	MYRGM 225150W31RA	2.25	2.205	2.250	2.295	3.75	140	200	260		
MYRGM 085150W31RA	0.85	0.833	0.850	0.867	2.70	72	121	169	MYRGM 230150W31RA	2.30	2.254	2.300	2.346	3.83	140	200	260		
MYRGM 090150W31RA	0.90	0.882	0.900	0.918	2.70	73	122	171	MYRGM 235150W31RA	2.35	2.303	2.350	2.397	3.92	140	200	260		
MYRGM 095150W31RA	0.95	0.931	0.950	0.969	2.70	74	123	172	MYRGM 240150W31RA	2.40	2.352	2.400	2.448	4.00	140	200	260		
MYRGM 100150W31RA	1.00	0.980	1.000	1.020	2.70	86	123	160	MYRGM 245150W31RA	2.45	2.401	2.450	2.499	4.08	140	200	260		
MYRGM 105150W31RA	1.05	1.029	1.050	1.071	2.70	91	130	169	MYRGM 250150W31RA	2.50	2.450	2.500	2.550	4.17	140	200	260		
MYRGM 110150W31RA	1.10	1.078	1.100	1.122	2.70	95	136	177	MYRGM 255150W31RA	2.55	2.499	2.550	2.601	4.25	140	200	260		
MYRGM 115150W31RA	1.15	1.127	1.150	1.173	2.70	99	142	185	MYRGM 260150W31RA	2.60	2.548	2.600	2.652	4.33	140	200	260		
MYRGM 120150W31RA	1.20	1.176	1.200	1.224	2.70	104	148	193	MYRGM 265150W31RA	2.65	2.597	2.650	2.703	4.42	140	200	260		
MYRGM 125150W31RA	1.25	1.225	1.250	1.275	2.70	108	154	201	MYRGM 270150W31RA	2.70	2.646	2.700	2.754	4.50	140	200	260		
MYRGM 130150W31RA	1.30	1.274	1.300	1.326	2.70	112	160	209	MYRGM 275150W31RA	2.75	2.695	2.750	2.805	4.58	140	200	260		
MYRGM 135150W31RA	1.35	1.323	1.350	1.377	2.70	117	167	217	MYRGM 280150W31RA	2.80	2.744	2.800	2.856	4.67	140	200	260		
MYRGM 140150W31RA	1.40	1.372	1.400	1.428	2.70	121	173	225	MYRGM 285150W31RA	2.85	2.793	2.850	2.907	4.75	140	200	260		
MYRGM 145150W31RA	1.45	1.421	1.450	1.479	2.70	125	179	233	MYRGM 290150W31RA	2.90	2.842	2.900	2.958	4.83	140	200	260		
MYRGM 150150W31RA	1.50	1.470	1.500	1.530	2.70	130	185	241	MYRGM 295150W31RA	2.95	2.891	2.950	3.009	4.92	140	200	260		
MYRGM 155150W31RA	1.55	1.519	1.550	1.581	2.70	134	191	249	MYRGM 300150W31RA	3.00	2.940	3.000	3.060	5.00	140	200	260		
MYRGM 160150W31RA	1.60	1.568	1.600	1.632	2.70	138	198	257	MYRGM 305150W31RA	3.05	2.989	3.050	3.111	5.08	140	200	260		
MYRGM 165150W31RA	1.65	1.617	1.650	1.683	2.75	140	200	260	MYRGM 310150W31RA	3.10	3.038	3.100	3.162	5.17	140	200	260		
MYRGM 170150W31RA	1.70	1.666	1.700	1.734	2.83	140	200	260	MYRGM 315150W31RA	3.15	3.087	3.150	3.213	5.25	140	200	260		
MYRGM 175150W31RA	1.75	1.715	1.750	1.785	2.92	140	200	260	MYRGM 320150W31RA	3.20	3.136	3.200	3.264	5.33	140	200	260		
MYRGM 180150W31RA	1.80	1.764	1.800	1.836	3.00	140	200	260	MYRGM 325150W31RA	3.25	3.185	3.250	3.315	5.42	140	200	260		
MYRGM 185150W31RA	1.85	1.813	1.850	1.887	3.08	140	200	260	MYRGM 330150W31RA	3.30	3.234	3.300	3.366	5.50	140	200	260		
MYRGM 190150W31RA	1.90	1.862	1.900	1.938	3.17	140	200	260	MYRGM 335150W31RA	3.35	3.283	3.350	3.417	5.50	142	203	264		
MYRGM 195150W31RA	1.95	1.911	1.950	1.989	3.25	140	200	260	MYRGM 340150W31RA	3.40	3.332	3.400	3.468	5.50	144	206	268		
MYRGM 200150W31RA	2.00	1.960	2.000	2.040	3.33	140	200	260	MYRGM 345150W31RA	3.45	3.381	3.450	3.519	5.50	146	209	272		
MYRGM 205150W31RA	2.05	2.009	2.050	2.091	3.42	140	200	260	MYRGM 350150W31RA	3.50	3.430	3.500	3.570	5.50	148	212	276		
MYRGM 210150W31RA	2.10	2.058	2.100	2.142	3.50	140	200	260	MYRGM 355150W31RA	3.55	3.479	3.550	3.621	5.50	151	215	280		
MYRGM 215150W31RA	2.15	2.107	2.150	2.193	3.58	140	200	260	MYRGM 360150W31RA	3.60	3.528	3.600	3.672	5.50	153	218	284		
MYRGM 220150W31RA	2.20	2.156	2.200	2.244	3.67	140	200	260											

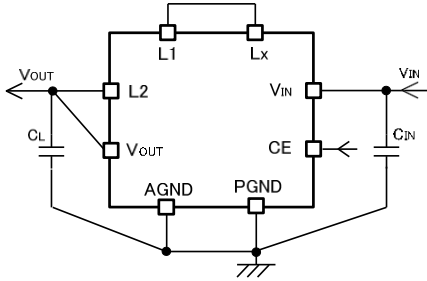
ELECTRICAL CHARACTERISTICS

● SPEC Table (V_{OUT}, t_{ONmin})

MYRGM-B; PWM/PFM Control

Part Number	NOMINAL OUTPUT VOLTAGE	V _{OUT}			V _{IN}	t _{ONmin} f _{osc} =3.0MHz			Part Number	NOMINAL OUTPUT VOLTAGE	V _{OUT}			V _{IN}	t _{ONmin} f _{osc} =3.0MHz				
		<E-1>	<E-2>	<E-3>		<C-1>	<E-5>	<E-6>			<E-7>	<E-1>	<E-2>		<E-3>	<C-1>	<E-5>	<E-6>	<E-7>
		V _{OUT(T)}	MIN.	TYP.		MAX.	MIN.	TYP.			MAX.	V _{OUT(T)}	MIN.		TYP.	MAX.	MIN.	TYP.	MAX.
MYRGM 080150B31RA	0.80	0.784	0.800	0.816	2.70	71	119	166	MYRGM 225150B31RA	2.25	2.205	2.250	2.295	3.75	140	200	260		
MYRGM 085150B31RA	0.85	0.833	0.850	0.867	2.70	72	121	169	MYRGM 230150B31RA	2.30	2.254	2.300	2.346	3.83	140	200	260		
MYRGM 090150B31RA	0.90	0.882	0.900	0.918	2.70	73	122	171	MYRGM 235150B31RA	2.35	2.303	2.350	2.397	3.92	140	200	260		
MYRGM 095150B31RA	0.95	0.931	0.950	0.969	2.70	74	123	172	MYRGM 240150B31RA	2.40	2.352	2.400	2.448	4.00	140	200	260		
MYRGM 100150B31RA	1.00	0.980	1.000	1.020	2.70	86	123	160	MYRGM 245150B31RA	2.45	2.401	2.450	2.499	4.08	140	200	260		
MYRGM 105150B31RA	1.05	1.029	1.050	1.071	2.70	91	130	169	MYRGM 250150B31RA	2.50	2.450	2.500	2.550	4.17	140	200	260		
MYRGM 110150B31RA	1.10	1.078	1.100	1.122	2.70	95	136	177	MYRGM 255150B31RA	2.55	2.499	2.550	2.601	4.25	140	200	260		
MYRGM 115150B31RA	1.15	1.127	1.150	1.173	2.70	99	142	185	MYRGM 260150B31RA	2.60	2.548	2.600	2.652	4.33	140	200	260		
MYRGM 120150B31RA	1.20	1.176	1.200	1.224	2.70	104	148	193	MYRGM 265150B31RA	2.65	2.597	2.650	2.703	4.42	140	200	260		
MYRGM 125150B31RA	1.25	1.225	1.250	1.275	2.70	108	154	201	MYRGM 270150B31RA	2.70	2.646	2.700	2.754	4.50	140	200	260		
MYRGM 130150B31RA	1.30	1.274	1.300	1.326	2.70	112	160	209	MYRGM 275150B31RA	2.75	2.695	2.750	2.805	4.58	140	200	260		
MYRGM 135150B31RA	1.35	1.323	1.350	1.377	2.70	117	167	217	MYRGM 280150B31RA	2.80	2.744	2.800	2.856	4.67	140	200	260		
MYRGM 140150B31RA	1.40	1.372	1.400	1.428	2.70	121	173	225	MYRGM 285150B31RA	2.85	2.793	2.850	2.907	4.75	140	200	260		
MYRGM 145150B31RA	1.45	1.421	1.450	1.479	2.70	125	179	233	MYRGM 290150B31RA	2.90	2.842	2.900	2.958	4.83	140	200	260		
MYRGM 150150B31RA	1.50	1.470	1.500	1.530	2.70	130	185	241	MYRGM 295150B31RA	2.95	2.891	2.950	3.009	4.92	140	200	260		
MYRGM 155150B31RA	1.55	1.519	1.550	1.581	2.70	134	191	249	MYRGM 300150B31RA	3.00	2.940	3.000	3.060	5.00	140	200	260		
MYRGM 160150B31RA	1.60	1.568	1.600	1.632	2.70	138	198	257	MYRGM 305150B31RA	3.05	2.989	3.050	3.111	5.08	140	200	260		
MYRGM 165150B31RA	1.65	1.617	1.650	1.683	2.75	140	200	260	MYRGM 310150B31RA	3.10	3.038	3.100	3.162	5.17	140	200	260		
MYRGM 170150B31RA	1.70	1.666	1.700	1.734	2.83	140	200	260	MYRGM 315150B31RA	3.15	3.087	3.150	3.213	5.25	140	200	260		
MYRGM 175150B31RA	1.75	1.715	1.750	1.785	2.92	140	200	260	MYRGM 320150B31RA	3.20	3.136	3.200	3.264	5.33	140	200	260		
MYRGM 180150B31RA	1.80	1.764	1.800	1.836	3.00	140	200	260	MYRGM 325150B31RA	3.25	3.185	3.250	3.315	5.42	140	200	260		
MYRGM 185150B31RA	1.85	1.813	1.850	1.887	3.08	140	200	260	MYRGM 330150B31RA	3.30	3.234	3.300	3.366	5.50	140	200	260		
MYRGM 190150B31RA	1.90	1.862	1.900	1.938	3.17	140	200	260	MYRGM 335150B31RA	3.35	3.283	3.350	3.417	5.50	142	203	264		
MYRGM 195150B31RA	1.95	1.911	1.950	1.989	3.25	140	200	260	MYRGM 340150B31RA	3.40	3.332	3.400	3.468	5.50	144	206	268		
MYRGM 200150B31RA	2.00	1.960	2.000	2.040	3.33	140	200	260	MYRGM 345150B31RA	3.45	3.381	3.450	3.519	5.50	146	209	272		
MYRGM 205150B31RA	2.05	2.009	2.050	2.091	3.42	140	200	260	MYRGM 350150B31RA	3.50	3.430	3.500	3.570	5.50	148	212	276		
MYRGM 210150B31RA	2.10	2.058	2.100	2.142	3.50	140	200	260	MYRGM 355150B31RA	3.55	3.479	3.550	3.621	5.50	151	215	280		
MYRGM 215150B31RA	2.15	2.107	2.150	2.193	3.58	140	200	260	MYRGM 360150B31RA	3.60	3.528	3.600	3.672	5.50	153	218	284		
MYRGM 220150B31RA	2.20	2.156	2.200	2.244	3.67	140	200	260											

■ TYPICAL CIRCUIT



	VALUE
C_{IN} C_L	10V/10 μ F

NOTE:

The integrated Inductor can be used only for this DC/DC converter. Please do not use this inductor for other reasons.

NOTE:

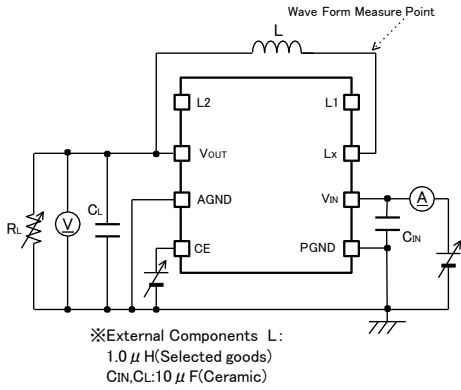
*1: Max. Temp. for the cap. is +85°C .

*2: Max. Temp. for the cap. is +125°C.

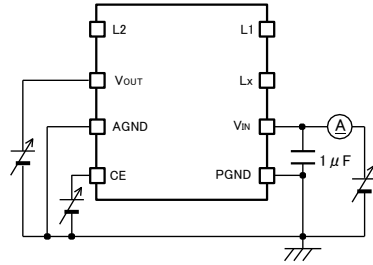
When under the condition of the voltage difference between input voltage and output voltage is low, please use 125°C product, which has small capacity drop.

■ TEST CIRCUITS

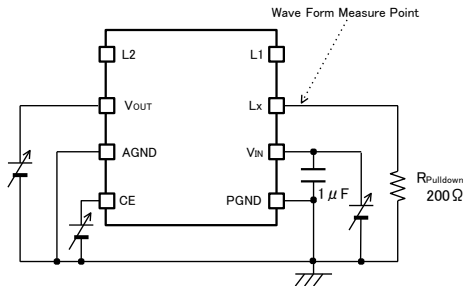
< Circuit No.① >



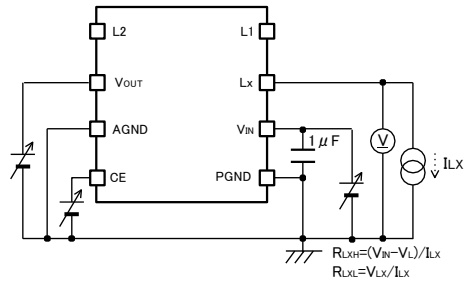
< Circuit No.② >



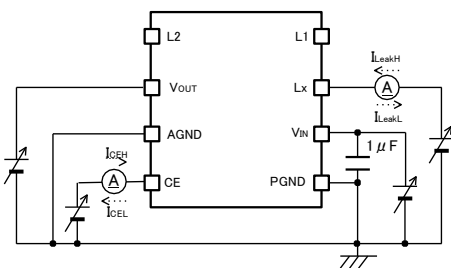
< Circuit No.③ >



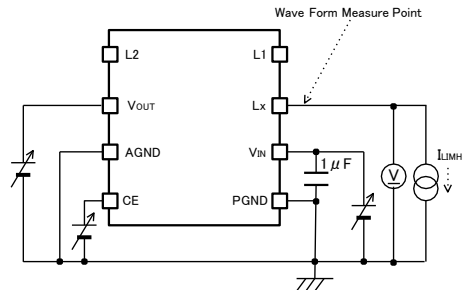
< Circuit No.④ >



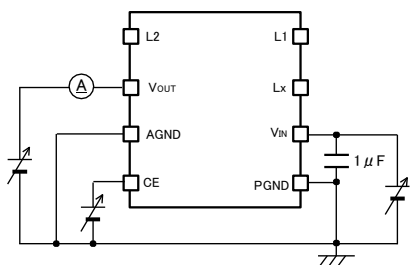
< Circuit No.⑤ >



< Circuit No.⑥ >

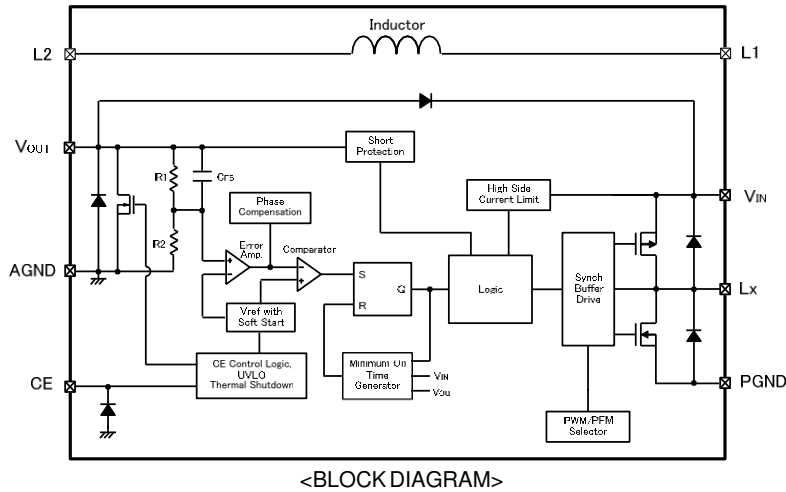


< Circuit No.⑦ >



OPERATIONAL EXPLANATION

The MYRGM-W/MYRGM-B series consists of a reference voltage source, error amplifier, comparator, phase compensation, minimum on time generation circuit, output voltage adjustment resistors, P-channel MOS driver transistor, N-channel MOS switching transistor for the synchronous switch, current limiter circuit, UVLO circuit, thermal shutdown circuit, short protection circuit, PWM/PFM selection circuit and others. (See the BLOCK DIAGRAM below.)



The method is High Speed circuit Architecture for Transient with Constant On Time control, which features on time control method and a fast transient response that also achieves low output voltage ripple.

The on time (t_{on}) is determined by the input voltage and output voltage, and turns on the Pch MOS driver T_r for a fixed time. During the off time (t_{off}), the voltage that is fed back through R1 and R2 is compared to the reference voltage by the error amp, and the error amp output is phase compensated and sent to the comparator. The comparator compares this signal to the reference voltage, and if the signal is lower than the reference voltage, sets the SR latch. On time then resumes. By doing this, PWM operation takes place with the off time controlled to the optimum duty ratio and the output voltage is stabilized. The phase compensation circuit optimizes the frequency characteristics of the error amp, and generates a ramp wave similar to the ripple voltage that occurs in the output to modulate the output signal of the error amp. This enables a stable feedback system to be obtained even when a low ESR capacitor such as a ceramic capacitor is used, and a fast transient response and stabilization of the output voltage are achieved.

<Minimum on time generation circuit>

Generates an on time that depends on the input voltage and output voltage (t_{on}). The on time is set as given by the equations below.

$$t_{on} (ns) = V_{OUT}/V_{IN} \times 333$$

<Switching frequency>

The switching frequency can be obtained from the on time (t_{on}), which is determined by the input voltage and output voltage, as given by the equation below.

$$f_{osc} (MHz) = V_{OUT}(V) / (V_{IN}(V) \times t_{on}(ns))$$

<100% duty cycle mode>

When the load current is heavy and the voltage difference between input voltage and output voltage is small, 100% duty cycle mode is activated and it keeps the Pch MOS driver T_r turning on. 100% duty cycle mode attains a high output voltage stability and a high-speed response under all load conditions, from light to heavy, even in conditions where the dropout voltage is low.

<Error amp>

The error amp monitors the output voltage. The voltage divided by the internal R1 and R2 resistors is a feedback voltage for Error Amp. and compared to the reference voltage. The output voltage of the error amp becomes higher when the feedback voltage is higher than the reference voltage. The frequency characteristics of the error amp are optimized internally.

■ OPERATIONAL EXPLANATION (Continued)

<Current Limit>

The current limiter circuit of the MYRGM-W/MYRGM-B series monitors the current flowing through the P-channel MOS driver transistor connected to the Lx pin. When the driver current is greater than a specific level, the current limit function operates to turn off the pulses from the Lx pin at any given timing. When the over current state is eliminated, the IC resumes its normal operation.

<Reference voltage source, soft-start function>

The reference voltage forms a reference that is used to stabilize the output voltage of the IC. After chip enable of the IC, the reference voltage connected to the error amp increases linearly during the soft-start interval.

This allows the voltage divided by the internal R1 and R2 resistors and the reference voltage to be controlled in a balanced manner, and the output voltage rises in proportion to the rise in the reference voltage. This operation prevents rush input current and enables the output voltage to rise smoothly.

If the output voltage does not reach the set output voltage within the soft start time, such as when the load is heavy or a large capacity output capacitor is connected, the balancing of the voltage divided by the internal resistors R1 and R2 and the reference voltage is lost, however, the current restriction function activates to prevent an excessive increase of input current, enabling a smooth rise of the output voltage.

<PWM/PFM selection circuit>

PWM control is a continuous conduction mode, and operates at a stable switching frequency by means of an on time (t_{on}) that is determined by the input voltage and output voltage regardless of the load.

PWM/PFM auto switching control is a discontinuous conduction mode at light loads, and lowers the switching frequency to reduce switching loss and improve efficiency.

The MYRGM-W series is internally fixed to PWM control.

The MYRGM-B series is internally fixed to PWM/PFM auto switching control.

<CE function>

Operation starts when “H” voltage is input into the CE pin. The IC can be put in the shutdown state by inputting “L” voltage into the CE pin. In the shutdown state, the supply current of the IC is 0 μ A (TYP.), and the Pch MOS driver Tr. and Nch MOS switch Tr. for synchronous rectification turn off. The CE pin is a CMOS input and the sink current is 0 μ A.

<UVLO>

When the V_{IN} voltage becomes 2.00V (TYP.) or lower, the P-ch MOS driver transistor output driver transistor is forced OFF to prevent false pulse output caused by unstable operation of the internal circuitry. When the V_{IN} pin voltage becomes 2.10V (TYP.) or higher, switching operation takes place. By releasing the UVLO function, the IC performs the soft start function to initiate output startup operation. The UVLO circuit does not cause a complete shutdown of the IC, but causes pulse output to be suspended; therefore, the internal circuitry remains in operation.

<Thermal Shutdown>

For protection against heat damage of the ICs, thermal shutdown function monitors chip temperature. The thermal shutdown circuit starts operating and the P-ch MOS driver and N-ch MOS driver transistor will be turned off when the chip's temperature reaches 150°C. When the temperature drops to 120°C (TYP.) or less after shutting of the current flow, the IC performs the soft-start function to initiate output startup operation.

<Short-circuit protection function>

The short-circuit protection circuit protects the device that is connected to this product and to the input/output in situations such as when the output is accidentally shorted to GND. The short-circuit protection circuit monitors the output voltage, and when the output voltage falls below the short-circuit protection threshold voltage, it turns off the Pch MOS driver Tr and latches it. Once in the latched state, operation is resumed by turning off the IC from the CE pin and then restarting, or by re-input into the V_{IN} pin.

■ OPERATIONAL EXPLANATION (Continued)

<CL High Speed Discharge>

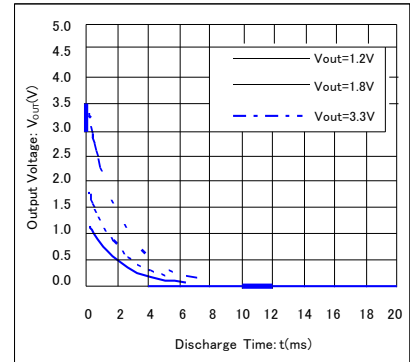
The product can quickly discharge the electric charge at the output capacitor (CL) when a low signal to the CE pin which enables a whole IC circuit put into OFF state, is inputted via the N-ch MOS switch transistor located between the VOUT pin and the GND pin. When the IC is disabled, electric charge at the output capacitor (CL) is quickly discharged so that it may avoid application malfunction.

$$V = V_{OUT(T)} \times e^{-t/\tau}$$

$$t = \tau \ln(V_{OUT(T)} / V)$$

V : Output voltage after discharge
 VOUT(T) : Output voltage
 t : Discharge time
 τ : CL × RDCHG
 CL : Capacitance of Output capacitor
 RDCHG : CL auto-discharge resistance,
 but it depends on supply voltage.

Output Voltage Discharge characteristics
 RDCHG=210Ω (TYP.) CL=10μF

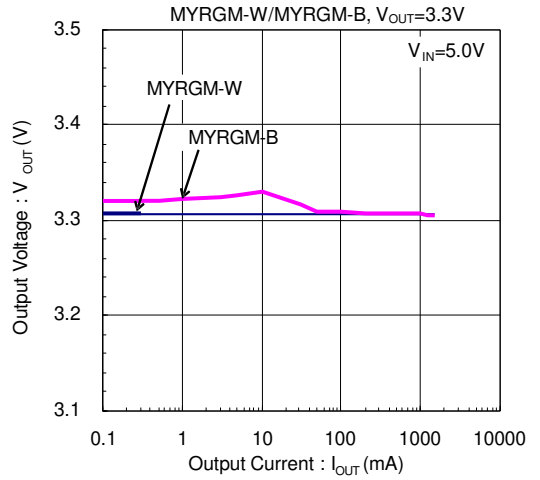
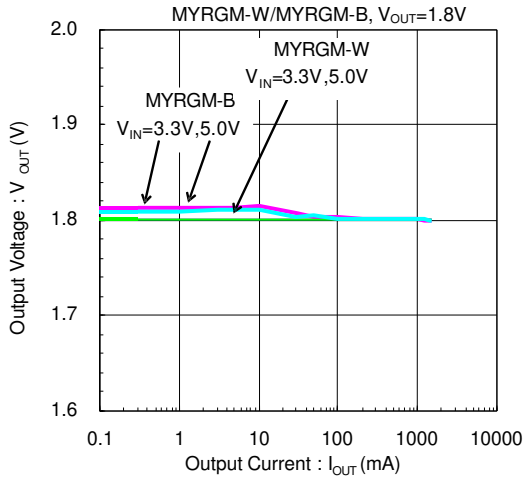


■ NOTE ON USE

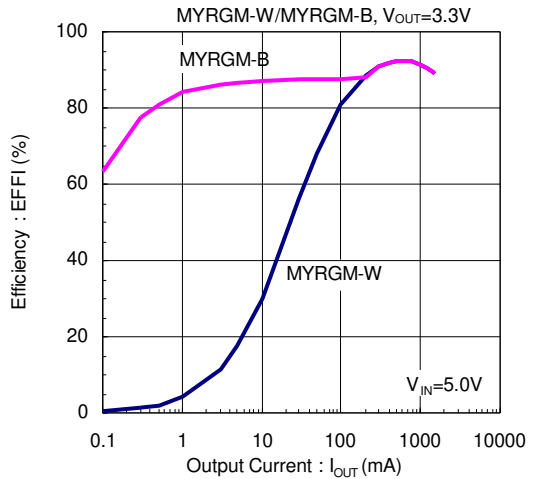
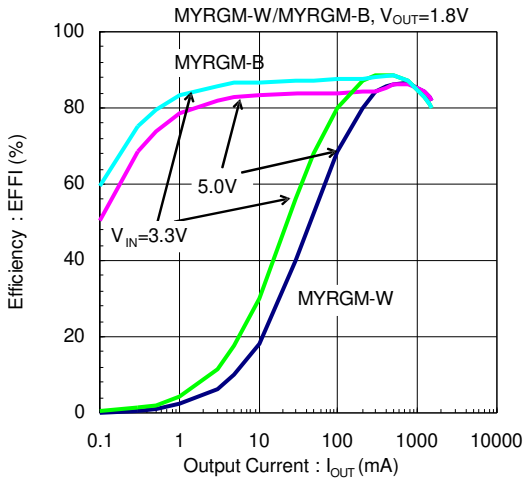
- For the phenomenon of temporal and transitional voltage decrease or voltage increase, the IC may be damaged or deteriorated if IC is used beyond the absolute MAX. specifications.
- Spike noise and ripple voltage arise in a switching regulator as with a DC/DC converter. These are greatly influenced by external component selection, such as the coil inductance, capacitance values, and board layout of external components. Once the design has been completed, verification with actual components should be done.
- The DC/DC converter characteristics depend greatly on the externally connected components as well as on the characteristics of this IC, so refer to the specifications and standard circuit examples of each component when carefully considering which components to select. Be especially careful of the capacitor characteristics and use B characteristics (JIS standard) or X7R, X5R (EIA standard) ceramic capacitors.
- Sufficiently reinforce the ground wiring. In particular, reinforce near the PGND and AGND pin as fluctuations of the ground phase due to the ground current during switching may cause the operation of the IC to become unstable.
- Mount external components as close as possible to the IC. Keep the wiring short and thick to lower the wiring impedance.
- A feature of High Speed Transient Response -COT control is that it controls the off time in order to control the duty, which varies due to the effects of power loss between the input (VIN pin) and output (VOUT pin) due to the load, and thus the switching frequency fluctuates. In addition, changes in the on time due to 100% duty cycle mode are allowed. For this reason, caution must be exercised as the characteristics of the switching frequency will vary depending on the external component characteristics, board layout, input voltage, output voltage, load current and other parameters.
- Due to propagation delay inside the product, the on time generated by the minimum on time generation circuit may not be the same as the on time that is the ratio of the input voltage to the output voltage.
- With regard to the current limiting value, the actual coil current may at times exceed the electrical characteristics due to propagation delay inside the product.
- The CE pin is a CMOS input pin. Do not use with the pin open. If connecting to the input or ground, use a resistor up to 1MΩ. To prevent malfunctioning of the device connected to this product or the input/output due to short circuiting between pins, it is recommended that a resistor be connected.
- If the output voltage drops below the short circuit protection threshold voltage at the end of the soft start interval, operation will stop.
- PWM/PFM auto switching control is a discontinuous conduction mode when the load is light, and in cases where the voltage difference between input and output is low or the coil inductance is higher than the value indicated in the standard circuit example, the coil current may reverse when the load is light, and thus pulse skipping will not be possible and light load efficiency will worsen.

■ TYPICAL PERFORMANCE CHARACTERISTICS

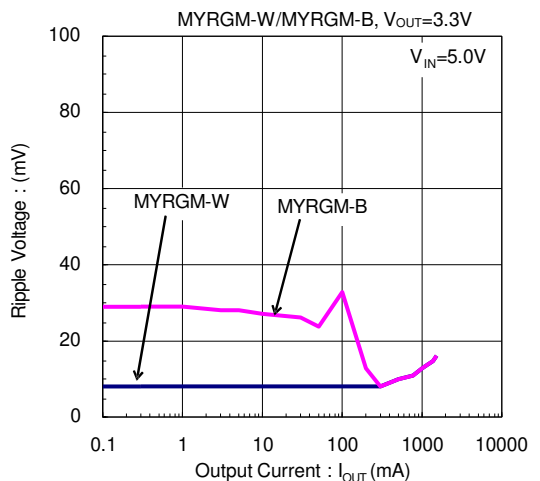
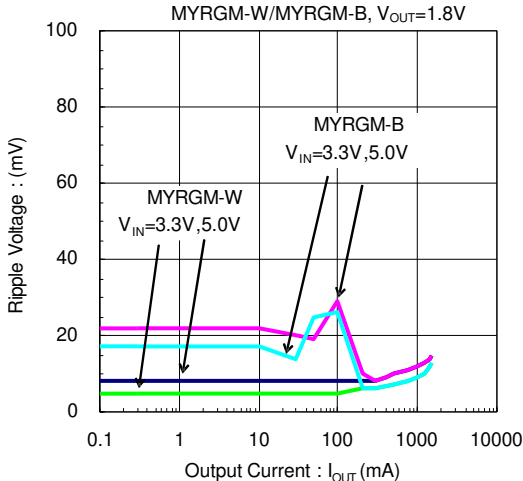
(1) Output Voltage vs. Output Current



(2) Efficiency vs. Output Current

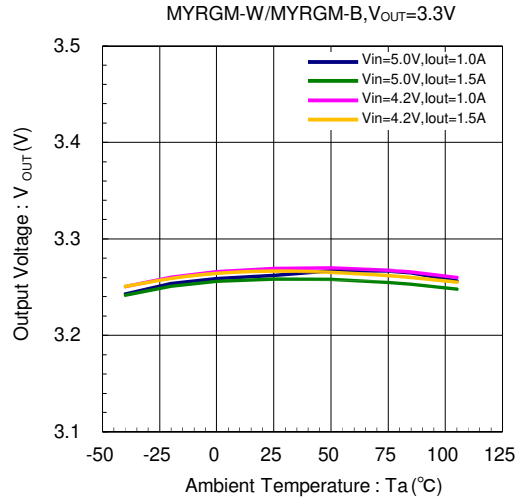
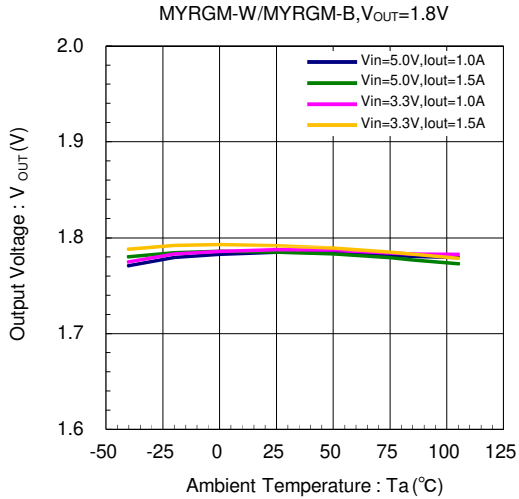


(3) Ripple Voltage vs. Output Current

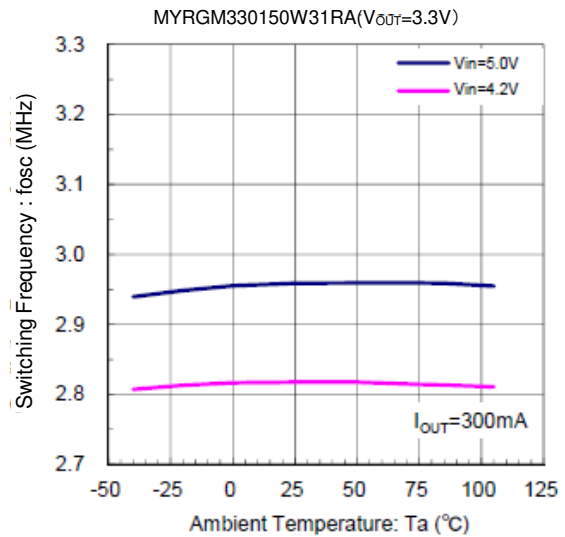
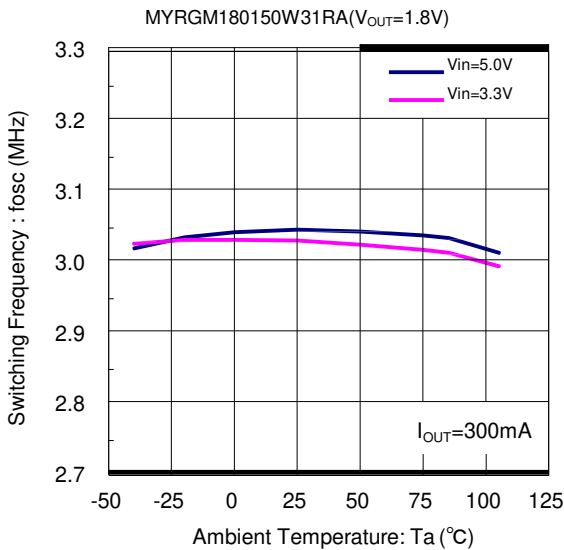


TYPICAL PERFORMANCE CHARACTERISTICS (Continued)

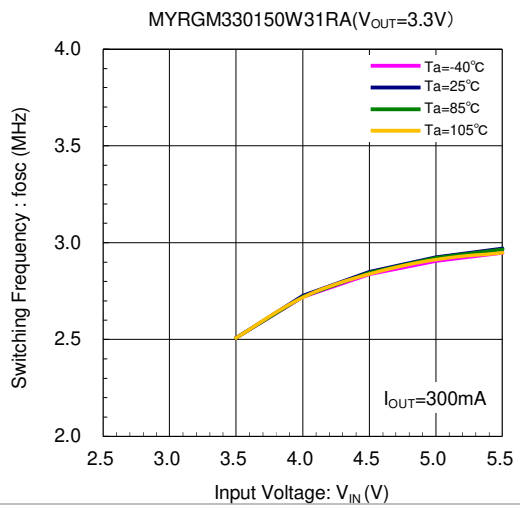
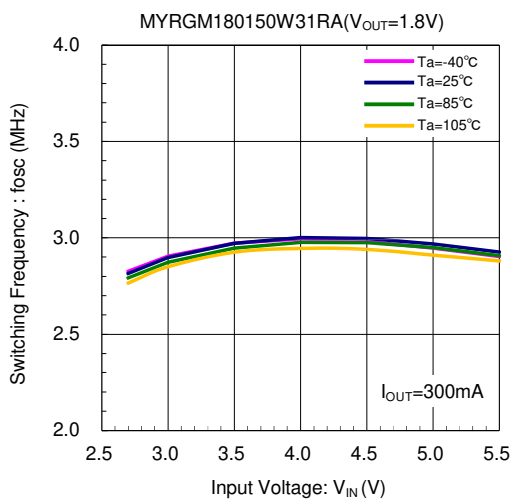
(4) Output Voltage vs. Ambient Temperature



(5) Switching Frequency vs. Ambient Temperature



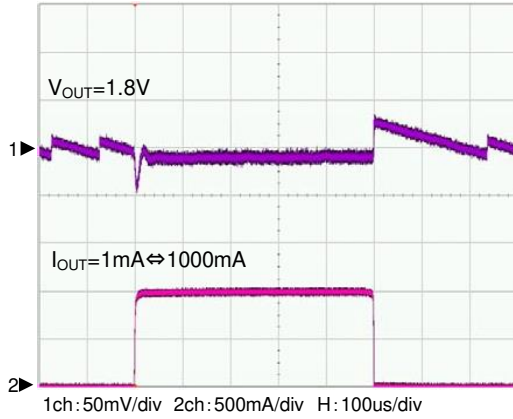
(6) Switching Frequency vs. Input Voltage



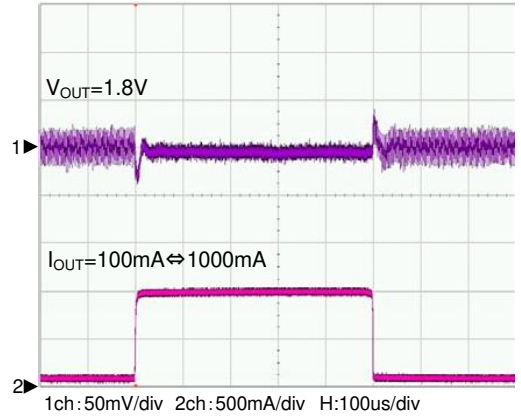
■ TYPICAL PERFORMANCE CHARACTERISTICS (Continued)

(7) Load Transient Response

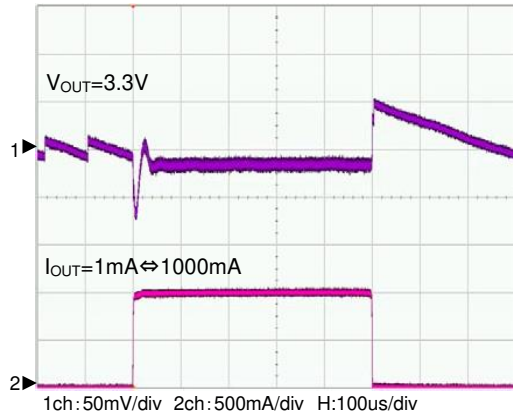
MYRGM180150B31RA ($V_{IN}=5V$, $I_{OUT}=1mA \leftrightarrow 1000mA$)



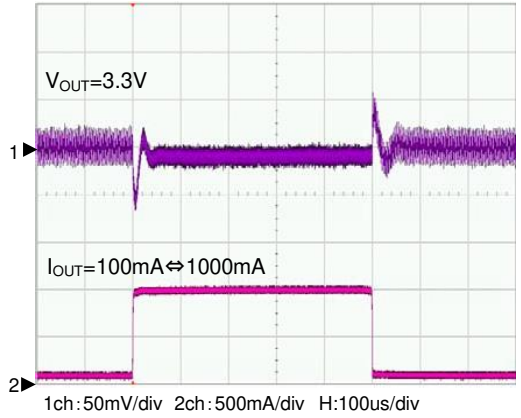
MYRGM180150B31RA ($V_{IN}=5V$, $I_{OUT}=100mA \leftrightarrow 1000mA$)



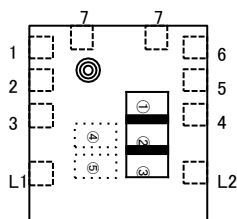
MYRGM330150B31RA ($V_{IN}=5V$, $I_{OUT}=1mA \leftrightarrow 1000mA$)



MYRGM330150B31RA ($V_{IN}=5V$, $I_{OUT}=100mA \leftrightarrow 1000mA$)



MARKING RULE



① represents products series

MARK	PRODUCT SERIES
A	MYRGM-W*****
B	MYRGM-B*****

② represents integer of the reference voltage

OUTPUT VOLTAGE (V)	MARK	PRODUCT SERIES
0.X	A	MYRGM0*****31RA
1.X	B	MYRGM1*****31RA
2.X	C	MYRGM2*****31RA
3.X	D	MYRGM3*****31RA

③ represents decimal number of the reference voltage

OUTPUT VOLTAGE (V)	MARK	PRODUCT SERIES	OUTPUT VOLTAGE (V)	MARK	PRODUCT SERIES
X.0	0	MYRGM*0*****31RA	X.05	A	MYRGM*05150*31RA
X.1	1	MYRGM*1*****31RA	X.15	B	MYRGM*15150*31RA
X.2	2	MYRGM*2*****31RA	X.25	C	MYRGM*25150*31RA
X.3	3	MYRGM*3*****31RA	X.35	D	MYRGM*35150*31RA
X.4	4	MYRGM*4*****31RA	X.45	E	MYRGM*45150*31RA
X.5	5	MYRGM*5*****31RA	X.55	F	MYRGM*55150*31RA
X.6	6	MYRGM*6*****31RA	X.65	H	MYRGM*65150*31RA
X.7	7	MYRGM*7*****31RA	X.75	K	MYRGM*75150*31RA
X.8	8	MYRGM*8*****31RA	X.85	L	MYRGM*85150*31RA
X.9	9	MYRGM*9*****31RA	X.95	M	MYRGM*95150*31RA

④⑤ represents production lot number

01~09, 0A~0Z, 11~9Z, A1~A9, AA~AZ, B1~ZZ in order.

(G, I, J, O, Q, W excluded)

* No character inversion used.

1. The product and product specifications contained herein are subject to change without notice to improve performance characteristics. Consult us, or our representatives before use, to confirm that the information in this datasheet is up to date.
2. The information in this datasheet is intended to illustrate the operation and characteristics of our products. We neither make warranties or representations with respect to the accuracy or completeness of the information contained in this datasheet nor grant any license to any intellectual property rights of ours or any third party concerning with the information in this datasheet.
3. Applicable export control laws and regulations should be complied and the procedures required by such laws and regulations should also be followed, when the product or any information contained in this datasheet is exported.
4. The product is neither intended nor warranted for use in equipment of systems which require extremely high levels of quality and/or reliability and/or a malfunction or failure which may cause loss of human life, bodily injury, serious property damage including but not limited to devices or equipment used in 1) nuclear facilities, 2) aerospace industry, 3) medical facilities, 4) automobile industry and other transportation industry and 5) safety devices and safety equipment to control combustions and explosions. Do not use the product for the above use unless agreed by us in writing in advance.
5. Although we make continuous efforts to improve the quality and reliability of our products; nevertheless Semiconductors are likely to fail with a certain probability. So in order to prevent personal injury and/or property damage resulting from such failure, customers are required to incorporate adequate safety measures in their designs, such as system fail safes, redundancy and fire prevention features.
6. Our products are not designed to be Radiation-resistant.
7. Please use the product listed in this datasheet within the specified ranges.
8. We assume no responsibility for damage or loss due to abnormal use.
9. All rights reserved. No part of this datasheet may be copied or reproduced unless agreed by Murata Manufacturing Co., Ltd. in writing in advance.

Murata Manufacturing Co., Ltd.