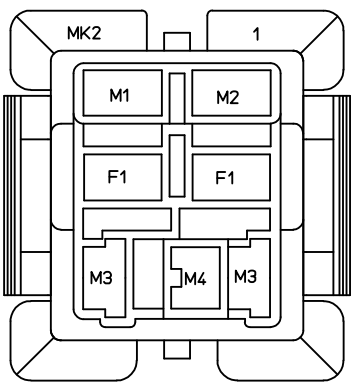
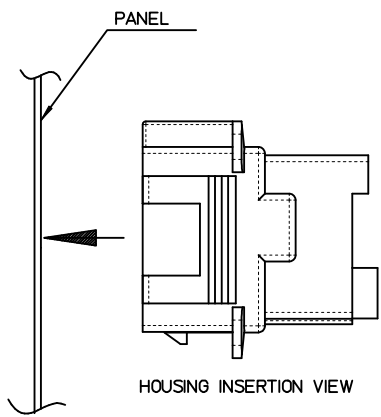
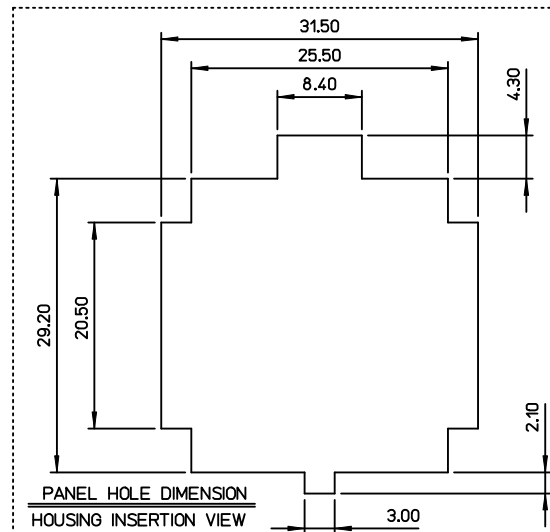
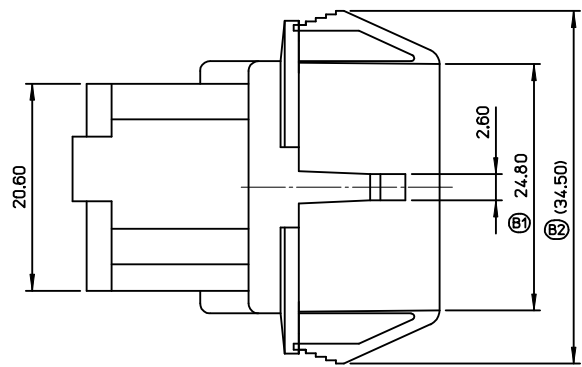
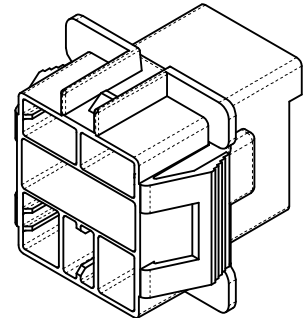
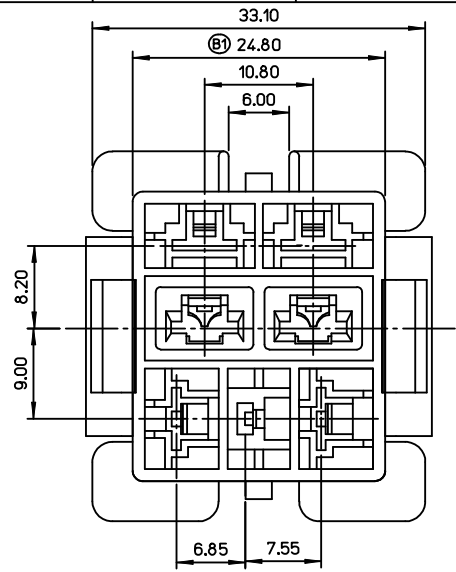
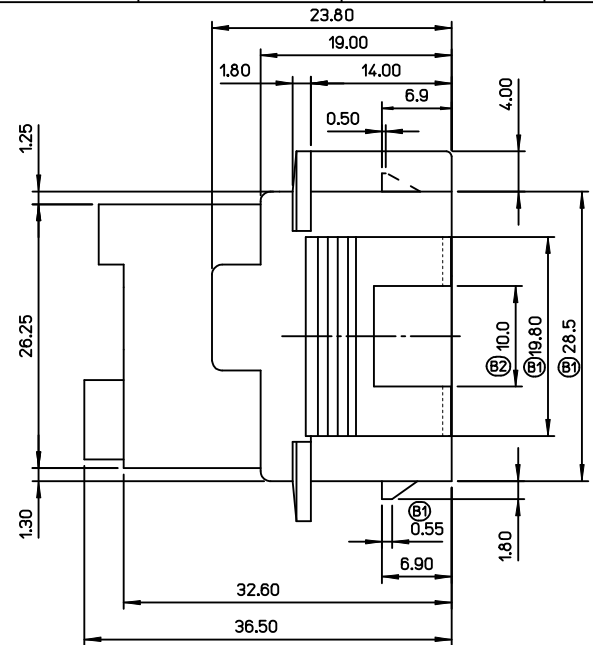


10 9 8 7 6 5 4 3 2 1

TERMINAL PATTERN



- M1 TERMINAL : 35453-9*02
- M2 TERMINAL : 35452-9*02
- M3 TERMINAL : 35725-18/10/1910/3010
- M4 TERMINAL : 35765-0110/0210
- F1 TERMINAL : 35725-5*10
- M = MALE TERMINAL
- F = FEMALE TERMINAL



NOTES

1. MATERIAL :
POLYESTER(PBT), NO GLASS FILLED, UL94V-0,
COLOR : NATURAL
2. PRODUCT SPECIFICATION : PS-35546-001
3. PACKING SPECIFICATION : PK-35546-001
4. MATED HOUSING : 35547-030*
35547-040*

REVISED EC NO: KOR2013-0091 DRWN: JSSHIN 2013/04/02 CHKD: SHCHU 2013/04/02 APPR: YSKIM02 2013/04/08 B2	QUALITY SYMBOLS ▽=0 ▽=0	GENERAL TOLERANCES (UNLESS SPECIFIED)		DIMENSION STYLE MM ONLY		SCALE 2:1	DESIGN UNITS METRIC	THIRD ANGLE PROJECTION		
		4 PLACES	± ---	± ---	DRAWN BY	DATE	TITLE			
		3 PLACES	± ---	± ---	WY. YANG	1997/11/12	.250 MULTI W-T-W CONN. RECEPTACLE HOUSING-7P			
		2 PLACES	± 0.30	± ---	CHECKED BY	DATE				
1 PLACE	± 0.30	± ---	BK. CHOI	1997/11/12	molex DOCUMENT NO. SD-35546-001 SHEET NO. 1 OF 1					
0 PLACE	± ---	± ---	APPROVED BY	DATE						
DRAFT WHERE APPLICABLE MUST REMAIN WITHIN DIMENSIONS		MATERIAL NO. 355460700		THIS DRAWING CONTAINS INFORMATION THAT IS PROPRIETARY TO MOLEX INCORPORATED AND SHOULD NOT BE USED WITHOUT WRITTEN PERMISSION						

9 8 7 6 5 4 3 2 1