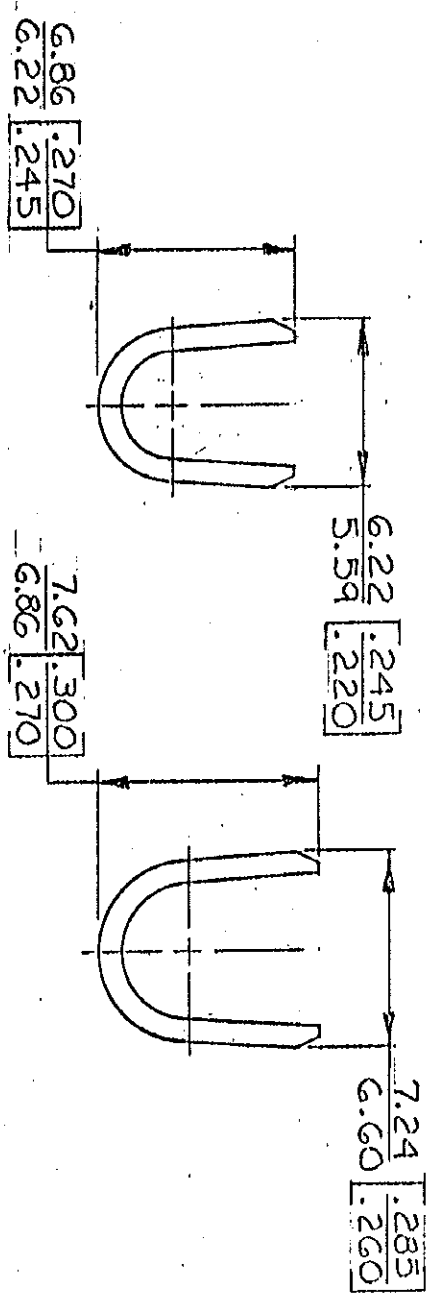
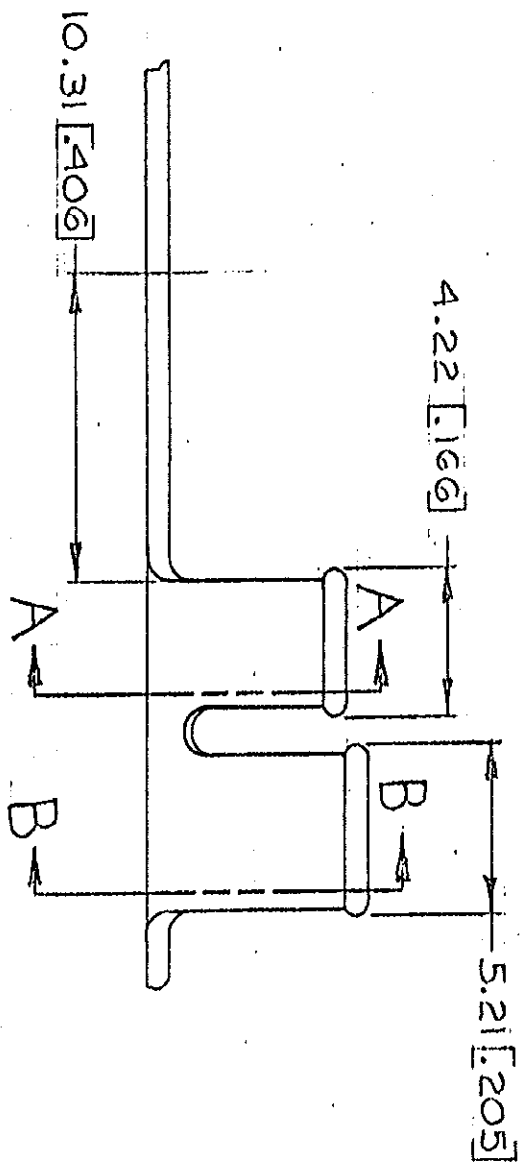
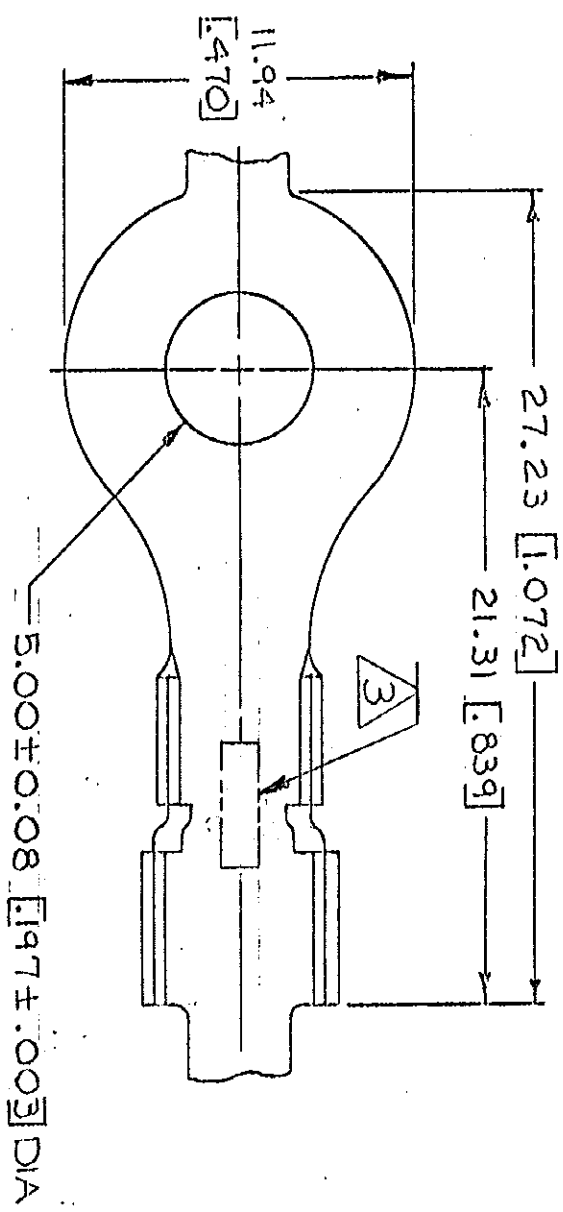


© COPYRIGHT 1963 BY AMP INCORPORATED, HARRISBURG, PA.  
 ALL INTERNATIONAL RIGHTS RESERVED. AMP INCORPORATED PRODUCTS  
 COVERED BY U. S. AND FOREIGN PATENTS AND/OR PATENTS PENDING.



		REVISIONS				
P	F	ZONE	LTR	DESCRIPTION	DATE	APPROVED
✓	✓		H	REDRAWN REVISIED N-3943	5-1-78	D. S.
✓	✓		J	REV PER AF-7197	1/22/79	PAF/64
✓	✓		K	REV PER AF-7262	2/18/81	PAF/64
✓	✓		L	ADD -1 PER 0247-93	8/2/93	PAF/64

- 1. CONTINUOUS STRIPON REELS
- 2. DIMENSIONS IN BRACKETS ARE IN INCHES.
- 3. STAMPING: AMP FOR 41124 AMP\* FOR 41124-1

**METRIC**

SECT A-A

SECT B-B

UNLESS OTHERWISE SPECIFIED DIMENSIONS ARE IN INCHES. TOLERANCES DECIMALS ±0.35 [0.15] ANGLES 1°	CONTRACT NO	FINISH	SEE TABLE
STUD SIZE #10	3.0-6.0 mm [12-10]	WIRE RANGE	3.81-5.33 [150-.210]
INSULATION RANGE		FINISH	TIN
MATERIAL	SEE TABLE		0.76 [0.30] PH05 BRZ
DR	APPD	CHKD	NAME
DR	APPD	CHKD	AMP INCORPORATED
DR	APPD	CHKD	Harrisburg, Pa.
DR	APPD	CHKD	RING
DR	APPD	CHKD	SIZE
DR	APPD	CHKD	CODE IDENT NO
DR	APPD	CHKD	DRAWING NO
DR	APPD	CHKD	00779
DR	APPD	CHKD	41124
DR	APPD	CHKD	SCALE
DR	APPD	CHKD	SHEET

CUSTOMER DRAWING