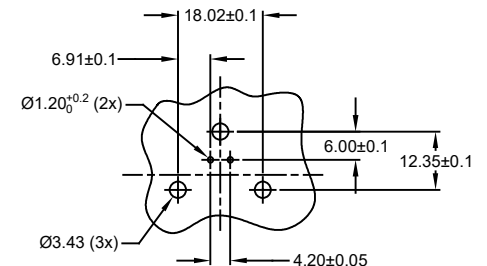
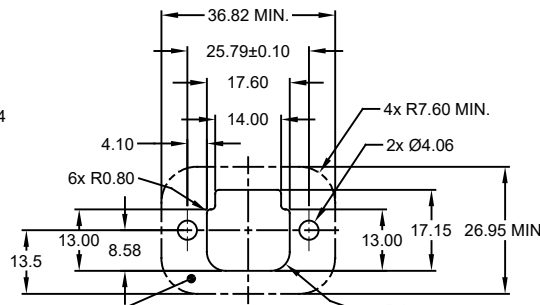
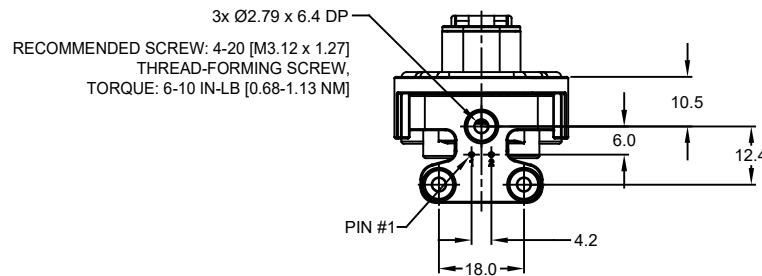
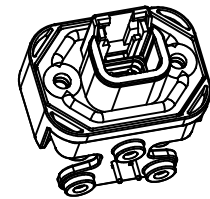
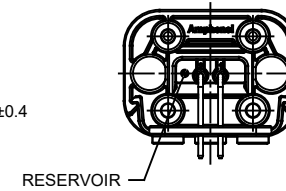
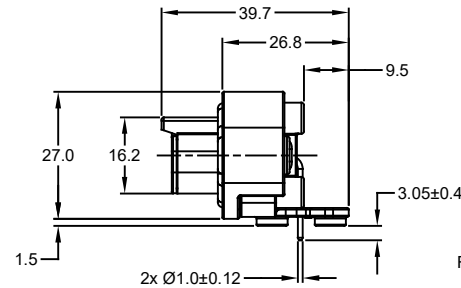
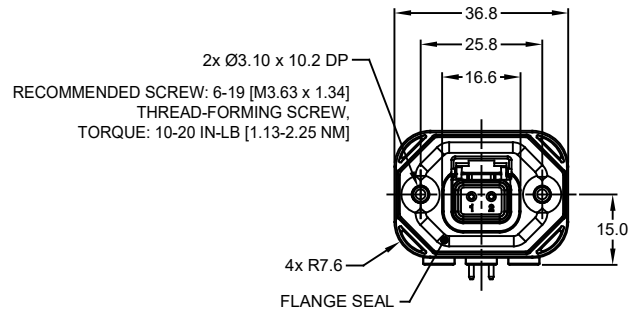


REVISIONS					
REV	ECO	DESCRIPTION	DATE	BY	APPR
A1	-	RELEASE NEW DRAWING	15JUN18	SULLEN	TOMMY
A2	-	REVISED DRAWING	10JUL20	JHEAD	DH



NOTES: UNLESS OTHERWISE SPECIFIED

- MATERIAL:
HOUSING: THERMOPLASTIC, GREY
SEAL: SILICONE RUBBER
CONTACT: COPPER ALLOY
- MODIFICATIONS: FLANGE; RA PCB MOUNT
- SPECIFICATIONS:
3.1 CURRENT RATING: 7.5 AMPS
3.2 OPERATING TEMPERATURE: -55°C TO +125°C
3.3 DIELECTRIC WITHSTANDING VOLTAGE: LESS THAN 2 MILLIAMPS CURRENT LEAKAGE @ 1500 VOLTS AC
3.4 INSULATION RESISTANCE: 1000 MEGOHMS MIN @ 25°C
3.5 MOISTURE RESISTANCE: IP67 (MATED CONDITION)
3.6 MATING CYCLE DURABILITY: 100 CYCLES
3.7 RoHS COMPLIANT
- MATING PART: ATM06-2S* (* = ALL MODIFICATIONS)
- ALL DIMENSIONS ARE FOR REFERENCE USE ONLY
- POTTED CONNECTORS SPECIFIED FOR UP TO 5 P.S.I. APPLICATIONS.

INTERNAL SEALING SURFACE
FINISH TO BE $\frac{3}{32}$ OR BETTER [Z10.13]

RECOMMENDED PANEL
CUTOUT

RECOMMENDED PCB LAYOUT
VIEW FROM COMPONENTS
SIDE OF PCB

ATM13-2P-BMXX VARIANTS		
CONTACT PLATING	POTTING OR NOT IN RESERVOIR	PART NUMBER
GOLD	NO POTTING	ATM13-2P-BM01
GOLD	POTTING	ATM13-2P-BM02
TIN	NO POTTING	ATM13-2P-BM03
TIN	POTTING	ATM13-2P-BM04

ATM13-2P-BMXX		PART NUMBER		DESCRIPTION		ITEM																																																																										
<table border="1"> <thead> <tr> <th>QUANTITY</th> <th colspan="3">MATERIALS LIST</th> </tr> </thead> <tbody> <tr> <td colspan="4">UNLESS OTHERWISE SPECIFIED</td> <td colspan="2">SIGNATURES</td> <td>DATE</td> </tr> <tr> <td colspan="4">1) All dimensions are in metric (mm).</td> <td colspan="2">DRAWN: SULLENZHANG</td> <td>15JUN18</td> </tr> <tr> <td colspan="4">2) Tolerances are as follows:</td> <td colspan="2">CHECKED: ORIONLI</td> <td>15JUN18</td> </tr> <tr> <td colspan="4">1 PL DEC ±0.30 1 Fractions ±1/64</td> <td colspan="2">ENGINEER:</td> <td></td> </tr> <tr> <td colspan="4">2 PL DEC ±0.15 Angles ±1°</td> <td colspan="2">APPROVAL: TOMMYXIE</td> <td>15JUN18</td> </tr> <tr> <td colspan="4">3 PL DEC ±0.08</td> <td colspan="2">CUSTOMER:</td> <td></td> </tr> <tr> <td colspan="4">3) Note reference = </td> <td colspan="3">THIS DRAWING IS SUPPLIED FOR INFORMATION ONLY. DESIGN FEATURES, SPECIFICATIONS AND PERFORMANCE DATA SHOWN HEREON ARE THE PROPERTY OF THE AMPHENOL CORPORATION. NO RIGHTS OF REPRODUCTION ARE IMPLIED. ALL DIMENSIONS ARE SUBJECT TO NORMAL MANUFACTURING VARIATIONS.</td> </tr> <tr> <td colspan="4">MATERIAL SPECIFICATIONS:</td> <td colspan="2">SIZE</td> <td>TYPE</td> </tr> <tr> <td colspan="4">PROCESS SPECIFICATIONS:</td> <td colspan="2">SCALE</td> <td>REVISION</td> </tr> <tr> <td colspan="4">NEXT ASSY:</td> <td colspan="2">NONE</td> <td>A2</td> </tr> </tbody> </table>							QUANTITY	MATERIALS LIST			UNLESS OTHERWISE SPECIFIED				SIGNATURES		DATE	1) All dimensions are in metric (mm).				DRAWN: SULLENZHANG		15JUN18	2) Tolerances are as follows:				CHECKED: ORIONLI		15JUN18	1 PL DEC ±0.30 1 Fractions ±1/64				ENGINEER:			2 PL DEC ±0.15 Angles ±1°				APPROVAL: TOMMYXIE		15JUN18	3 PL DEC ±0.08				CUSTOMER:			3) Note reference =				THIS DRAWING IS SUPPLIED FOR INFORMATION ONLY. DESIGN FEATURES, SPECIFICATIONS AND PERFORMANCE DATA SHOWN HEREON ARE THE PROPERTY OF THE AMPHENOL CORPORATION. NO RIGHTS OF REPRODUCTION ARE IMPLIED. ALL DIMENSIONS ARE SUBJECT TO NORMAL MANUFACTURING VARIATIONS.			MATERIAL SPECIFICATIONS:				SIZE		TYPE	PROCESS SPECIFICATIONS:				SCALE		REVISION	NEXT ASSY:				NONE		A2
QUANTITY	MATERIALS LIST																																																																															
UNLESS OTHERWISE SPECIFIED				SIGNATURES		DATE																																																																										
1) All dimensions are in metric (mm).				DRAWN: SULLENZHANG		15JUN18																																																																										
2) Tolerances are as follows:				CHECKED: ORIONLI		15JUN18																																																																										
1 PL DEC ±0.30 1 Fractions ±1/64				ENGINEER:																																																																												
2 PL DEC ±0.15 Angles ±1°				APPROVAL: TOMMYXIE		15JUN18																																																																										
3 PL DEC ±0.08				CUSTOMER:																																																																												
3) Note reference =				THIS DRAWING IS SUPPLIED FOR INFORMATION ONLY. DESIGN FEATURES, SPECIFICATIONS AND PERFORMANCE DATA SHOWN HEREON ARE THE PROPERTY OF THE AMPHENOL CORPORATION. NO RIGHTS OF REPRODUCTION ARE IMPLIED. ALL DIMENSIONS ARE SUBJECT TO NORMAL MANUFACTURING VARIATIONS.																																																																												
MATERIAL SPECIFICATIONS:				SIZE		TYPE																																																																										
PROCESS SPECIFICATIONS:				SCALE		REVISION																																																																										
NEXT ASSY:				NONE		A2																																																																										
<p style="text-align: center;">Amphenol</p> <p style="text-align: center;">Sine Systems - www.amphenol-sine.com 44724 Morley Drive Clinton Township, MI 48036</p> <p style="text-align: center;">BOARDLOCK PCB MOUNT RECEPTACLE, 2 PIN, RA FLANGE, ATM SERIES</p>																																																																																
<table border="1"> <tr> <td>SIZE</td> <td>TYPE</td> <td>DWG NO.</td> <td>REVISION</td> </tr> <tr> <td>B</td> <td>C-</td> <td>ATM13-2P-BMXX</td> <td>A2</td> </tr> <tr> <td colspan="3">SCALE</td> <td>SHEET 1 OF 1</td> </tr> </table>							SIZE	TYPE	DWG NO.	REVISION	B	C-	ATM13-2P-BMXX	A2	SCALE			SHEET 1 OF 1																																																														
SIZE	TYPE	DWG NO.	REVISION																																																																													
B	C-	ATM13-2P-BMXX	A2																																																																													
SCALE			SHEET 1 OF 1																																																																													

TITLE: POSITION RECEPTACLE 2PIN RA FLANGE ATM SERIES
DWG NO.: ATM13-2P-BMXX
REV: A2
SH: 1
OF: 1